



Republic of the Philippines
Department of Education

23 FEB 2017

DepEd ORDER
No. **9**, s. 2017

**IMPLEMENTING GUIDELINES ON THE RELEASE AND USE OF FUNDS
FOR FISCAL YEAR 2017**

To: Undersecretaries
Assistant Secretaries
Bureau and Service Directors
Regional Directors
Schools Division Superintendents
Public and Private Elementary and Secondary Schools Heads
All Others Concerned

1. For the information and guidance of all concerned, the Department of Education (DepEd) issues the enclosed **Implementing Guidelines on the Release and Use of Funds for Fiscal Year 2017**.
2. This Order shall take effect immediately upon publication on www.deped.gov.ph.
3. Immediate dissemination of and strict compliance with this Order is directed.


LEONOR MAGTOLIS BRIONES
Secretary

Encl.:

As stated

Reference:

None

To be indicated in the Perpetual Index
under the following subjects:

ALLOCATIONS
BUDGET
BUREAUS AND OFFICES
EXPENSES

FUNDS
POLICY
SCHOOLS

MCDJ/ R DO Implementing Guidelines on the Release and Use of Funds for FY 2017
0127/February 08, 2017

I. RATIONALE

This DepEd Order aims to provide guidance on the policies, rules and regulations on the release and use of funds for FY 2017. It also aims to ensure timely and efficient utilization of resources, synchronize fund release with the implementation of DepEd's programs, activities, and projects (PAPs), and to institute mechanisms for transparency and accountability across the different DepEd offices.

II. SCOPE OF THE POLICY

This DepEd Order covers the release and use of funds for nationwide implementation in the DepEd Central Office (CO), Regional Offices (ROs), Schools Division Offices (SDOs), and Schools.

III. POLICY STATEMENT

The Department hereby issues this Order to provide guidance on the policies, rules and regulations on the release and use of funds for FY 2017.

These guidelines are based on Republic Act (RA) No. 10924 or the 2017 General Appropriations Act (GAA) and on the Department of Budget and Management's (DBM) National Budget Circular No. 567 dated January 3, 2017 or "Guidelines on the release of Funds for FY 2017"

IV. PROCEDURES

A. RELEASE OF FUNDS

1. Prevailing Policies

- a. The effectivity date of the FY 2017 GAA is on 01 January 2017 per Section 1 of the General Provisions of the said law. FY 2017 Appropriations shall be valid for release and obligation for the purpose specified and subject to pertinent special and general provisions:
 - i. For Personnel Services (PS) – until December 31, 2017
 - ii. For Maintenance and Other Operating Expenses (MOOE) and Capital Outlay – until December 31, 2018
 - iii. For Financial Expenses (FinEx) – until December 31, 2018, considering that it is similarly treated as MOOE.

The President's Veto Message, however, directed all agency heads to ensure obligation of all PAPs funded under the GAA, including MOOE and CO, **not later than December 31, 2017**. Therefore, sub-allotted funds from Central Office are expected to be obligated on or before end of December 2017.

- b. The aggregate allotment releases for the year from all appropriation sources shall not exceed the Allotment Release Program of each agency which is consistent with the Total Obligation Program as per approved Budget Execution Documents (BEDs).
- c. The obligational authorities that will be issued by DBM for agencies/operating units to incur obligations include:
 - i. The GAA as Allotment Order (GAAAO) for those categorized as "For Comprehensive Release";
 - ii. Special Allotment Release Orders (SARO) to cover the release of budgetary items under "For Later Release" and releases from Special Purpose Funds; and
 - iii. General Allotment Release Order (GARO) to cover the comprehensive release of Retirement and Life Insurance Premiums (RLIP).
- d. Release of funds shall be made directly to the operating units of Agencies. Funds specifically appropriated to ROs, SDOs, and school implementing units (IUs) shall be released to them directly except for centrally-managed items (CMI).

2. Manner of Release of Funds

FOR COMPREHENSIVE RELEASE (FCR)

The budgetary allocations that are for comprehensive release in the DepEd's FY 2017 budget are listed in **Annex A**.

This is to reiterate, however, that although there are budgetary allocations that are comprehensively released to the DepEd ROs and SDOs in pursuance to the policy of GAAAO, the implementation of certain PAPs is subject to the issuance of guidelines from the DepEd CO. A complete list of such PAPs, which include the School Based Feeding Program and Special Hardship Allowance, among others, shall be issued.

Further, there are budgetary items allocated to the ROs that are Centrally-Managed Items (CMIs), and therefore, they are transferred to the CO. Hence, these are not among the items directly released to the ROs.

FCR to CO or CMIs (Annex A-1):

- Implementation of the Redesigned Technical-Vocational High School Program
- Textbooks/Instructional materials (including PhP100M for children with Special needs)
- Science and Mathematics Equipment
- Department of Education Computerization Program
- Provision and maintenance of Basic Education Facilities
 - Repair and/or rehabilitation of school buildings and Wat-San facilities
- Conservation and restoration of Gabaldon and other heritage school buildings
- Assistance to Students and Teachers in Private Schools and in Non-DepEd Public Schools
 - Education Service Contracting (ESC) Program
 - Voucher Program for Private Senior High Schools
 - Voucher Program for Non-DepEd Public Senior High Schools

In addition, the allocation for Grant of Cash Allowance under Implementation of the Grant of Cash Allowance, Hardship Pay, Equivalent Records Forms (ERF), Conversion to Master Teacher (MT), Reclassification of Positions and Payment of Step Increments lodged in the Central Office will now be directly released to the ROs, since the breakdown per region is already available. **See Annex A-1.**

Lastly, there are budgetary items that are lodged at the CO which will be sub-allotted later on for implementation of the field offices. Kindly note that OM-Finance BPM-2016 No. 126 and 127 state that the BEDs for such items shall be prepared by the CO. This means that release of these allotments require the field implementing units to request for release of additional Notice of Cash Allowance (NCA) for the cash requirement of such PAPs from their respective DBM ROs, supported by an accomplished Monthly Disbursement Program (MDP).

FCR to CO for sub-allotment to ROs/SDOs:

- General Administration and Support (GAS)
- Physical Fitness and School Sports Competition including Palarong Pambansa
- Development and Implementation of Education Programs
- Planning and Management Information Systems (PMIS)
- National Assessment Systems for Basic Education
- Support for Basic Education Research
- Human Resource Training and Development (HRTD)
- Health and Nutrition Services
- Basic Education Curriculum
- Continuing Education

- Pre-Service Education
- Indigenous Peoples Education (IPEd) Program
- Every Child a Reader Program
- Development and Promotion of Campus Journalism
- Implementation of Redesigned Technical Vocational High School Program
- Alternative Learning and Delivery Mode Programs, including requirement of Learning Centers
- Textbooks and Instructional Materials
- DepEd Computerization Program
- Senior High School MOOE
- Madrasah Education Program
- Disaster Preparedness Program

FOR LATER RELEASE (FLR)

Budgetary allocations that are for later release are listed in **Annex B**. These items are subject to the submission of Special Budget Requests (SBR) by the DepEd CO to the DBM CO for DepEd-managed PAPs and by the DepEd CO and Department of Public Works and Highways (DPWH) CO for Provision and Maintenance of Basic Educational Facilities projects implemented by the DPWH.

FLR to DepEd CO and for sub-allotment to RO/DO/IUs:

- General Administration and Support (GAS) Capital Outlay
- Administration of Personnel Benefits
- Acquisition, Surveying, and Titling of School Sites Capital Outlay
- Alternative Learning System Capital Outlay
- Operations of Schools
 - Creation and filling up of positions
- Provision and maintenance of Basic Education Facilities
 - Repair and/or rehabilitation of school buildings and Wat-San facilities
 - Acquisition of school desks, furniture, and fixtures
 - Electrification of on-grid schools
- Conservations and restoration of Gabaldon and other heritage school buildings
 - Site Development Plan

FLR to DPWH CO:

- Provision and maintenance of Basic Education Facilities
 - New construction of classrooms and Wat-San facilities
 - Technical-Vocational laboratories

B. USE OF FUNDS

1. Savings and Augmentation

1.1. Savings refer to portions or balances of any released appropriations in the GAA, which have not been obligated as a result of the following:

- i. Final discontinuance or abandonment of an ongoing PAP by the head of agency concerned due to causes not attributable to the fault or negligence of the said agency which would not render it possible for the agency to implement said PAP during the validity of the appropriations;
- ii. Non-commencement of the PAP for which the appropriations is released. For this purpose, non-commencement shall refer to the inability of the agency or its duly authorized procurement to obligate the released allotment and implement the PAP due to natural or man-made calamities or other causes not attributable to the fault or negligence of the agency concerned during the validity of the appropriations;
- iii. Decreased cost resulting from improved efficiency during the implementation or until the completion by agencies of their PAPs: Provided, that the agencies will still be able to deliver the targets and services as approved in the GAA; and
- iv. Difference between the approved budget for the contract and the contract award price including any variations required for the project.

1.2. Note that programmed appropriations which have not been released or allotments not yet obligated due to the fault of the agency concerned shall not be considered savings.

1.3. Savings may likewise refer to available balances of appropriations arising from unused compensation and related costs pertaining to:

- (i) Unfilled, vacant or abolished positions;
- (ii) Non-entitlement to allowances and benefits;
- (iii) Leaves of absence without pay; and
- (iv) Unutilized pension and retirement benefits arising from death of pensioners, decrease in the number of retirees, or other related causes.

1.4. In the case of sub-allotted funds from Central Office, any **savings generated from the situations listed in Section B.1.1 which is requested to be used for the same PAP may be considered as modification of allotment** and shall be subject to the guidelines on the same per Section B.2.

1.5. Meanwhile, any savings generated from the situations listed in Section B.1.1. which is requested to be used for or added to

another PAP is considered as “augmentation.” The particulars of the expenditures to be funded from savings should be within the scope of, or covered by an existing PAP. But the existence of a PAP regardless of the availability of allotment class/object of expenditure is sufficient for the purpose of the augmentation, which may result from:

- i. Unforeseen modifications or adjustments in the PAP; or
- ii. Re-assessment in the use, prioritization, and/or distribution of resources.

Note that the use of savings and augmentation of a deficient PAP is subject to the approval of the President of the Philippines per the General Provisions of the GAA.

- 1.6.NBC No. 567 also reiterates that in the use of savings, priority shall be given to the payment of compensation, year-end bonus and cash gift, retirement gratuity, terminal leave benefits, old-age pension of veterans, CNA incentives and other personnel benefits authorized by law and in the FY 2017 GAA.

2. Modification of Allotment

2.1.As a general rule, agencies shall spend what is programmed in their respective appropriation in the GAA. In exceptional circumstances, **agencies may modify the allotment issued within a PAP**, subject to the approval of the following:

- i) The heads of agencies for changes in the object of expenditure (Salaries, Wages, Travelling Expenses, or Investment Outlays) within an allotment class (PS, MOOE or CO). This covers the use of savings discussed in Section B.1.4.
- ii) The DBM for the following modifications: (i) for the payment of Magna Carta benefits authorized under Section 42 of the 2017 GAA General Provisions; (ii) from one allotment class to another; (iii) from one operating unit to another; (iv) within a special purpose fund; and (v) within the purpose authorized under the Unprogrammed Appropriations; and
- iii) The President of the Philippines for the payment of intelligence funds within the Executive Branch.

2.2.For **changes in the object of expenditure within an allotment class within the same PAP**, the delegated approving authorities are as follows:

- i. For CO, the Undersecretary for Finance-Budget and Performance Monitoring;
- ii. For ROs, including sub-allotted funds from Central Office, the Regional Directors;

- iii. For SDOs and school IUs, including sub-allotted funds from Central/Regional Office, the respective Schools Division Superintendents.

In the case of sub-allotted funds from Central Office, although authorities have been delegated to field officials to approve modifications of allotment, the concerned ROs, SDOs and school IUs shall provide the Central Office Budget Division a copy and summary of their Realignment Advice Forms (RAF) at the end of each quarter.

Moreover, in the case of savings generated from training activities which are proposed to be used for other training activities within the same PAP but which is/are not cited in the face of the Sub-Allotment Release Order, clearance from the Undersecretary for Finance – Budget and Performance Monitoring shall be secured prior to obligating said funds.

- 2.3. **Note that all modifications within Capital Outlays may only be made until June 30, 2017, except if due to the occurrence of calamities.**

- 2.4. All modifications in the allotment shall not entail any increase in the total amount appropriated for a PAP. In the case of program with several activities, modification may be done only within each activity.

3. Personnel Services Allotments

- 3.1. All offices shall comply with the requirements and instructions of the DBM in NBC No.567 pertaining to PS allotments.

- 3.2. All offices should also note the issuance of DBM's NBC No. 568 on the "Implementation of the Second Tranche Compensation Adjustment for Civilian Personnel and Military and Uniformed Personnel in the National Government" which prescribes the guidelines, rules, and regulations for the implementation of the second tranche compensation adjustment stipulated under Executive Order No. 201, series of 2016.

4. Clarification on Capitalization Threshold of Assets Recognized as Plant, Property and Equipment

- 4.1. As prescribed in the new Government Accounting Manual issued by the Commission on Audit, the capitalization threshold of P15,000 represents the minimum cost of an individual asset recognized as Plant, Property and Equipment.

- 4.2. Therefore, notwithstanding the School Capital Outlay budget lodged under Operations of Schools – Elementary Education, public elementary and also public Junior and Senior High Schools may use their school MOOE budgets to procure small capital expenditure items **worth below P15,000 or costing P14,999 and below**. This amends the provision on the same in DepEd Order No. 13, 31 and 75, s.2016.
5. DepEd Plan Implementation Documents – Activity Request and Authority to Conduct
- 5.1. To support the optimal and timely implementation of plans, the Department uses two modes of plan execution, depending on the compliance of proposed plans/activities to the approved Work and Financial Plan.
- 5.2. If the proposed activity is in accordance with the approved WFP or the approved revised WFP of the office, then an Activity Request (AR) may be used to trigger funds release for the conduct of the said activity. Note that offices may have the opportunity to revise their WFPs at the end of every quarter, after the Program Implementation Review. See **Annex C** for the template, process and workflow involved in the approval of an AR.
- 5.3. If the proposed activity is not included in the approved WFP, an Authority to Conduct (ATC) must be secured prior to plan execution. The office must provide legal basis or documentation of directives to implement such activity to support the ATC. This is being contemplated in cases wherein the Department is tasked by the Cabinet or other oversight agencies to implement activities that are not included in the original WFP. Moreover, the office must also identify other activities in the WFP which will be reprogrammed or deferred for implementation, to give way for the proposed new activity.
- 5.4. If the proposed activity is included in the approved WFP, but has major deviations from the original plan, an ATC must be secured prior to plan execution. The variations which are covered by this requirement include: increase in budget requirement for the activity costing P100,000 and above; change in the nature of the activity; or change in scope of the activity. See **Annex C** for the template, process and workflow involved in the approval of an ATC.
- 5.5. Notwithstanding its inclusion in the approved Work and Financial Plan, transactions involving procurement of capital outlay items and hiring of contracts of service or consultants

shall be subject to an Authority to Procure or an Authority to Hire (whichever applies) process.

5.6. Lastly, the conduct of training activities or activities charged against the HRTD fund shall be subject to the ATC process and shall be subject to the issuance of guidelines on the use of the HRTD fund.

6. Operations of DepEd Negros Island Region (NIR)

6.1. Pending any issuance on the contrary, the DepEd Negros Island Regional Office shall continue operations in FY 2017 through the Division of Negros Occidental and the Division of Negros Oriental. DepEd Regions VI and VII are authorized to transfer FY 2017 MOOE allocated for DepEd NIR Proper, in the form of cash advance, based on the computation below. As in FY 2016, the transfer of funds shall be done alternately, first by Region VII then by Region VI.

DepEd Regional Office Proper	Recipient Schools Division	Amount
Region VI	Negros Occidental	PhP 21,752,000
Region VII	Negros Oriental	13,832,000
TOTAL		PhP 35,584,000

6.2. For Capital Outlay requirements, DepEd NIR shall submit its list of necessary furniture, fixtures and equipment to be procured for appropriate action of the Central Office.

7. Some Procurement Reminders

7.1. Procurement may commence without the issuance of the Sub-Allotment Release Order (sub-ARO) but short of award, per DBM Circular Letter 2010-9 on the "Guidelines Directing Agencies to Expedite the Implementation of their Procurement Activities;

7.2. Awarded contracts are deemed obligated only upon the end user's submission of the Obligation Request and Status (ORS) and the notarized contract;

7.3. Procurement of venues and facilities

i. Disbursement vouchers should include not only the signed contract but also the appropriate Bids and Awards

- Committee (BAC) resolution and documents, (e.g. Agency to Agency procurement or Lease of Real Property or Venue);
- ii. To ensure that resources are maximized, using DepEd facilities, such as the Regional Education Learning Centers (RELCs), ECOTECH Center, National Educators Academy of the Philippines (NEAP) and Baguio Teachers Camp (BTC), and other government-owned venues is highly encouraged.

7.4. For other procurement-related matters, please refer to the Implementing Rules and Regulations of Republic Act 9184 otherwise known as the Government Procurement Reform Act.

V. Monitoring and Evaluation

A. All offices shall comply with the reporting requirements contained in NBC No. 567 including the submission of Budget and Financial Accountability Reports as prescribed under COA-DBM Joint Circular No. 2014-1 and DBM Circular Letter No. 2016.1.

B. The new Program Management Information System (PMIS) shall be rolled out starting FY 2017. It shall serve as a tool for the Department to closely monitor the progress and implementation of various programs, activities and projects. A separate policy will be issued in this regard.

C. Any related concerns not covered by the provisions above may be referred to the Central Office Finance Service – Budget Division at (02) 637-6203 or (02) 637-4214 and/or Central Office Planning Service – Planning and Programming Division at (02) 633-7216.

VI. Effectivity

A. This Order shall take effect immediately upon issuance.

DEPARTMENT OF EDUCATION
OFFICE OF THE SECRETARY
SUMMARY OF APPROPRIATIONS BY PIAP UNDER FGR
FY 2017 GAA
(In Thousand Pesos)

UACS	PARTICULARS	AGENCY SPECIFIC BUDGET					COMPREHENSIVE RELEASE (ANNEX A)												
		AGENCY SPECIFIC BUDGET					COMPREHENSIVE RELEASE												
		PS	MOOE	CO	TOTAL	PS	MOOE	CO	TOTAL										
	I. General Administration and Support																		
	a. General Management and Supervision																		
	** 0100000 - Central Offices	151,498	862,926	151,500	1,165,924	151,498	862,926	-	1,165,924										
	** 0100000 - Central Office	139,959	860,052	151,500	1,151,511	139,959	860,052	-	1,151,511										
	** 0200001 - Baguio Teachers Camp	11,539	2,874	-	14,413	11,539	2,874	-	14,413										
	** 0300000 - Regional Office Proper	392,420	567,554	24,000	983,974	392,420	567,554	24,000	983,974										
	** 0300013 - Regional Office - NCR	37,155	38,172	1,500	76,827	37,155	38,172	1,500	76,827										
	** 0300001 - Regional Office - I	28,431	35,202	1,500	65,133	28,431	35,202	1,500	65,133										
	** 0300002 - Regional Office - II	22,159	26,382	1,500	50,041	22,159	26,382	1,500	50,041										
	** 0300014 - Regional Office - CAR	24,296	28,893	1,500	54,689	24,296	28,893	1,500	54,689										
	** 0300003 - Regional Office - III	23,520	49,101	1,500	74,121	23,520	49,101	1,500	74,121										
	** 0300004 - Regional Office - IVA	25,834	50,793	1,500	78,127	25,834	50,793	1,500	78,127										
	** 0300017 - Regional Office - IVB	19,000	28,898	1,500	49,398	19,000	28,898	1,500	49,398										
	** 0300005 - Regional Office - V	25,766	35,562	1,500	62,828	25,766	35,562	1,500	62,828										
	** 0300006 - Regional Office - VI	23,935	47,629	1,500	73,064	23,935	47,629	1,500	73,064										
	** 0300007 - Regional Office - VII	20,879	47,039	1,500	69,418	20,879	47,039	1,500	69,418										
	** 0300008 - Regional Office - VIII	29,052	33,301	1,500	63,853	29,052	33,301	1,500	63,853										
	** 0300009 - Regional Office - IX	25,525	28,889	1,500	55,914	25,525	28,889	1,500	55,914										
	** 0300010 - Regional Office - X	16,068	32,828	1,500	50,396	16,068	32,828	1,500	50,396										
	** 0300011 - Regional Office - XI	25,641	28,030	1,500	55,171	25,641	28,030	1,500	55,171										
	** 0300012 - Regional Office - XII	24,475	28,889	1,500	54,864	24,475	28,889	1,500	54,864										
	** 0300016 - Regional Office - XIII	20,684	27,946	1,500	50,130	20,684	27,946	1,500	50,130										
	** 0800000 - Division Office Proper	5,377,236	1,958,268	105,500	7,441,004	5,377,236	1,958,268	105,500	7,441,004										
	** 0800013 - Regional Office - NCR	926,900	173,488	8,000	1,108,388	926,900	173,488	8,000	1,108,388										
	** 0800001 - Regional Office - I	279,793	116,396	7,000	403,189	279,793	116,396	7,000	403,189										
	** 0800002 - Regional Office - II	200,491	82,045	4,500	287,036	200,491	82,045	4,500	287,036										
	** 0800014 - Regional Office - CAR	417,630	53,745	4,000	475,375	417,630	53,745	4,000	475,375										
	** 0800003 - Regional Office - III	413,612	194,473	10,000	618,085	413,612	194,473	10,000	618,085										
	** 0800004 - Regional Office - IVA	319,652	214,358	10,500	544,510	319,652	214,358	10,500	544,510										
	** 0800017 - Regional Office - IVB	198,136	72,683	3,500	274,319	198,136	72,683	3,500	274,319										
	** 0800005 - Regional Office - V	363,342	142,304	6,500	512,146	363,342	142,304	6,500	512,146										
	** 0800006 - Regional Office - VI	342,452	170,011	9,000	521,463	342,452	170,011	9,000	521,463										
	** 0800007 - Regional Office - VII	191,702	160,503	9,500	361,705	191,702	160,503	9,500	361,705										
	328,305,798	79,240,225	135,639,591	543,185,614	270,454,943	76,665,652	20,487,074	371,866,802											
	12,068,934	3,388,748	281,000	15,738,682	9,290,873	3,388,748	129,500	14,019,662											
	9,290,873	3,388,748	281,000	12,960,621	9,290,873	3,388,748	129,500	12,960,621											

UACS	PARTICULARS	APPROPRIATIONS				COMPREHENSIVE RELEASE (ANNEX A)			
		PS	MOOE	CO	TOTAL	PS	MOOE	CO	TOTAL
	** 0800008 - Regional Office - VIII	815,918	122,059	6,500	944,477	815,918	122,059	6,500	944,477
	** 0800009 - Regional Office - IX	126,600	85,878	4,000	216,478	126,600	85,878	4,000	216,478
	** 0800010 - Regional Office - X	305,134	106,624	7,000	418,758	305,134	106,624	7,000	418,758
	** 0800011 - Regional Office - XI	128,440	94,514	5,000	227,954	128,440	94,514	5,000	227,954
	** 0800012 - Regional Office - XII	161,277	89,657	4,500	255,434	161,277	89,657	4,500	255,434
	** 0800016 - Regional Office - XIII	186,157	79,530	6,000	271,687	186,157	79,530	6,000	271,687
	** 0900000 - Secondary Schools								
	** 0900013 - Regional Office - NCR	3,369,719	-	-	3,369,719	3,369,719	-	-	3,369,719
	** 0900001 - Regional Office - I	263,935	-	-	263,935	263,935	-	-	263,935
	** 0900002 - Regional Office - II	286,682	-	-	286,682	286,682	-	-	286,682
	** 0900014 - Regional Office - CAR	218,731	-	-	218,731	218,731	-	-	218,731
	** 0900003 - Regional Office - III	206,652	-	-	206,652	206,652	-	-	206,652
	** 0900004 - Regional Office - IVA	326,777	-	-	326,777	326,777	-	-	326,777
	** 0900017 - Regional Office - IVB	297,926	-	-	297,926	297,926	-	-	297,926
	** 0900005 - Regional Office - V	127,510	-	-	127,510	127,510	-	-	127,510
	** 0900006 - Regional Office - VI	238,199	-	-	238,199	238,199	-	-	238,199
	** 0900007 - Regional Office - VII	349,169	-	-	349,169	349,169	-	-	349,169
	** 0900008 - Regional Office - VIII	144,998	-	-	144,998	144,998	-	-	144,998
	** 0900009 - Regional Office - IX	253,193	-	-	253,193	253,193	-	-	253,193
	** 0900010 - Regional Office - X	124,549	-	-	124,549	124,549	-	-	124,549
	** 0900011 - Regional Office - XI	157,796	-	-	157,796	157,796	-	-	157,796
	** 0900012 - Regional Office - XII	127,731	-	-	127,731	127,731	-	-	127,731
	** 0900016 - Regional Office - XIII	135,270	-	-	135,270	135,270	-	-	135,270
	** 0900016 - Regional Office - XIII	110,601	-	-	110,601	110,601	-	-	110,601
103001000200000	b. Administration of Personnel Benefits	2,778,061	-	-	2,778,061	-	-	-	2,778,061
	** 0100000 - Central Office	2,778,061	-	-	2,778,061	-	-	-	2,778,061
	Lump-sum for Retirement Gratuity and Terminal Leave Benefits	1,719,000	-	-	1,719,000	-	-	-	1,719,000
	Lump-sum for Step Increments-Meritorious Performance	1,059,061	-	-	1,059,061	1,059,061	-	-	1,059,061
	Sub-Total, General Administration and Support	12,068,934	3,388,748	281,000	15,738,682	9,290,873	3,388,748	129,500	14,019,662
000002000000000	II. Support To Operations	3,670,251	10,848,061	67,500	14,585,812	3,670,251	10,848,061	2,500	14,585,812
241002000100000	a. Physical fitness and school sports competitions, including "Palatrong Pamantasan"	4,617	349,154	2,500	356,271	4,617	349,154	2,500	356,271
	** 0100000 - Central Office	4,617	349,154	2,500	356,271	4,617	349,154	2,500	356,271
269002000200000	b. Development and Implementation of Education Projects	10,554	7,621	-	18,175	10,554	7,621	-	18,175
	** 0100000 - Central Office (Educational Project Development and Implementation Task Force)	10,554	7,621	-	18,175	10,554	7,621	-	18,175

UACS	PARTICULARS	APPROPRIATIONS				COMPREHENSIVE RELEASE (ANNEX A)			
		PS	MOOE	CO	TOTAL	PS	MOOE	CO	TOTAL
		269002000300000	c. National Assessment Systems for Basic Education ** 0100000 - Central Office (National Education Testing and Research Center)	17,447	461,601	-	479,048	17,447	461,601
269002000400000	d. National Science Teaching Instrumentation ** 0100000 - Central Office (National Science Teaching Instrumentation Center)	17,447	461,601	-	479,048	17,447	461,601	-	479,048
269002000500000	e. Planning and Management Information Systems ** 0100000 - Central Office	63,657	73,187	-	136,844	63,657	73,187	-	136,844
	** 0300013 - Regional Office - NCR	16,435	73,187	-	89,622	16,435	73,187	-	89,622
	** 0300001 - Regional Office - I	1,892	-	-	1,892	1,892	-	-	1,892
	** 0300002 - Regional Office - II	2,447	-	-	2,447	2,447	-	-	2,447
	** 0300014 - Regional Office - CAR	3,056	-	-	3,056	3,056	-	-	3,056
	** 0300003 - Regional Office - III	3,304	-	-	3,304	3,304	-	-	3,304
	** 0300004 - Regional Office - IVA	3,290	-	-	3,290	3,290	-	-	3,290
	** 0300017 - Regional Office - IVB	4,131	-	-	4,131	4,131	-	-	4,131
	** 0300005 - Regional Office - V	3,966	-	-	3,966	3,966	-	-	3,966
	** 0300006 - Regional Office - VI	2,633	-	-	2,633	2,633	-	-	2,633
	** 0300007 - Regional Office - VII	2,186	-	-	2,186	2,186	-	-	2,186
	** 0300008 - Regional Office - VIII	3,009	-	-	3,009	3,009	-	-	3,009
	** 0300009 - Regional Office - IX	4,100	-	-	4,100	4,100	-	-	4,100
	** 0300010 - Regional Office - X	2,027	-	-	2,027	2,027	-	-	2,027
	** 0300011 - Regional Office - XI	4,057	-	-	4,057	4,057	-	-	4,057
	** 0300012 - Regional Office - XII	3,129	-	-	3,129	3,129	-	-	3,129
269002000600000	f. Education Information and Communication Services ** 0100000 - Central Office	15,838	16,579	-	32,417	15,838	16,579	-	32,417
267002000700000	g. Support for Basic Education Research ** 0100000 - Central Office	15,838	16,579	-	32,417	15,838	16,579	-	32,417
	** 0300013 - Regional Office - NCR	-	29,468	-	29,468	-	29,468	-	29,468
	** 0300001 - Regional Office - I	-	2,500	-	2,500	-	2,500	-	2,500
	** 0300002 - Regional Office - II	-	2,500	-	2,500	-	2,500	-	2,500
	** 0300014 - Regional Office - CAR	-	2,500	-	2,500	-	2,500	-	2,500
	** 0300003 - Regional Office - III	-	2,500	-	2,500	-	2,500	-	2,500
	** 0300004 - Regional Office - IVA	-	2,500	-	2,500	-	2,500	-	2,500
	** 0300017 - Regional Office - IVB	-	2,500	-	2,500	-	2,500	-	2,500
	** 0300005 - Regional Office - V	-	2,500	-	2,500	-	2,500	-	2,500
	** 0300006 - Regional Office - VI	-	2,500	-	2,500	-	2,500	-	2,500
	** 0300007 - Regional Office - VII	-	2,500	-	2,500	-	2,500	-	2,500
	** 0300008 - Regional Office - VIII	-	2,500	-	2,500	-	2,500	-	2,500
	** 0300009 - Regional Office - IX	-	2,500	-	2,500	-	2,500	-	2,500

DEPARTMENT OF EDUCATION
OFFICE OF THE SECRETARY
SUMMARY OF APPROPRIATIONS BY PI/AP UNDER FCR
FY 2017 GAA
(In Thousand Pesos)

Annex A

UACS	PARTICULARS	APPROPRIATIONS				COMPREHENSIVE RELEASE (ANNEX A)			
		PS	MOOE	CO	TOTAL	PS	MOOE	CO	TOTAL
269002000800000	h. Human resource development for teaching, teaching-related, non-teaching and other personnel > National Capital Region (NCR) ** 0100000 - Central Office ** 0300013 - Regional Office - NCR ** 0813000 - Division Offices > Region I - Ilocos ** 0300001 - Regional Office - I ** 0801000 - Division Offices > Region II - Cagayan Valley ** 0300002 - Regional Office - II ** 0802000 - Division Offices > Cordillera Administrative Region (CAR) ** 0300014 - Regional Office - CAR ** 0814000 - Division Offices > Region III - Central Luzon ** 0300003 - Regional Office - III ** 0803000 - Division Offices > Region IVA - CALABARZON ** 0300004 - Regional Office - IVA ** 0804000 - Division Offices > Region IVB - MIMAROPA ** 0300017 - Regional Office - IVB ** 0817000 - Division Offices > Region V - Bicol ** 0300005 - Regional Office - V ** 0805000 - Division Offices > Region VI - Western Visayas ** 0300006 - Regional Office - VI ** 0806000 - Division Offices > Region VII - Central Visayas ** 0300007 - Regional Office - VII ** 0807000 - Division Offices > Region VIII - Eastern Visayas ** 0300008 - Regional Office - VIII	-	2,500	-	2,500	-	2,500	-	2,500
	** 0300010 - Regional Office - X	-	2,500	-	2,500	-	2,500	-	2,500
	** 0300011 - Regional Office - XI	-	2,500	-	2,500	-	2,500	-	2,500
	** 0300012 - Regional Office - XII	-	2,500	-	2,500	-	2,500	-	2,500
	** 0300016 - Regional Office - XIII	-	2,500	-	2,500	-	2,500	-	2,500
	84,013	3,668,384	-	3,752,397	84,013	3,668,384	-	3,752,397	
	17,991	3,034,783	-	3,052,774	17,991	3,034,783	-	3,052,774	
	14,158	2,995,088	-	3,009,246	14,158	2,995,088	-	3,009,246	
	3,833	-	-	3,833	3,833	-	-	3,833	
	-	39,695	-	39,695	-	39,695	-	39,695	
	2,627	38,221	-	40,848	2,627	38,221	-	40,848	
	2,627	-	-	2,627	2,627	-	-	2,627	
	-	38,221	-	38,221	-	38,221	-	38,221	
	3,488	31,241	-	34,729	3,488	31,241	-	34,729	
	-	-	-	-	-	-	-	-	
	3,488	31,241	-	34,729	3,488	31,241	-	34,729	
	-	-	-	-	-	-	-	-	
	4,164	18,881	-	23,045	4,164	18,881	-	23,045	
	4,164	-	-	4,164	4,164	-	-	4,164	
	-	18,881	-	18,881	-	18,881	-	18,881	
	5,030	64,253	-	69,283	5,030	64,253	-	69,283	
	5,030	-	-	5,030	5,030	-	-	5,030	
	-	64,253	-	64,253	-	64,253	-	64,253	
	5,747	70,792	-	76,539	5,747	70,792	-	76,539	
	5,747	-	-	5,747	5,747	-	-	5,747	
	-	70,792	-	70,792	-	70,792	-	70,792	
	4,183	29,097	-	33,280	4,183	29,097	-	33,280	
	4,183	-	-	4,183	4,183	-	-	4,183	
	-	29,097	-	29,097	-	29,097	-	29,097	
	5,028	53,963	-	58,991	5,028	53,963	-	58,991	
	5,028	-	-	5,028	5,028	-	-	5,028	
	-	53,963	-	53,963	-	53,963	-	53,963	
	5,037	58,641	-	63,678	5,037	58,641	-	63,678	
	5,037	-	-	5,037	5,037	-	-	5,037	
	-	58,641	-	58,641	-	58,641	-	58,641	
	4,941	54,457	-	59,398	4,941	54,457	-	59,398	
	4,941	-	-	4,941	4,941	-	-	4,941	
	-	54,457	-	54,457	-	54,457	-	54,457	
	2,671	50,088	-	52,759	2,671	50,088	-	52,759	
	2,671	-	-	2,671	2,671	-	-	2,671	

DEPARTMENT OF EDUCATION
OFFICE OF THE SECRETARY
SUMMARY OF APPROPRIATIONS BY PI/AP UNDER FCR
FY 2017 GAA
(In Thousand Pesos)

Annex A

UACS	PARTICULARS	APPROPRIATIONS				COMPREHENSIVE RELEASE (ANNEX A)			
		PS	MOOE	CO	TOTAL	PS	MOOE	CO	TOTAL
	** 0808000 - Division Offices	-	50,088	-	50,088	-	50,088	-	50,088
	> Region IX - Zamboanga Peninsula	4,907	34,208	-	39,115	4,907	34,208	-	39,115
	** 0300009 - Regional Office - IX	4,907	-	-	4,907	4,907	-	-	4,907
	** 0809000 - Division Offices	-	34,208	-	34,208	-	34,208	-	34,208
	> Region X - Northern Mindanao	3,153	36,946	-	40,099	3,153	36,946	-	40,099
	** 0300010 - Regional Office - X	3,153	-	-	3,153	3,153	-	-	3,153
	** 0810000 - Division Offices	-	36,946	-	36,946	-	36,946	-	36,946
	> Region XI - Davao	4,442	33,948	-	38,390	4,442	33,948	-	38,390
	** 0300011 - Regional Office - XI	4,442	-	-	4,442	4,442	-	-	4,442
	** 0811000 - Division Offices	-	33,948	-	33,948	-	33,948	-	33,948
	> Region XII - SOCCSKSARGEN	3,449	33,424	-	36,873	3,449	33,424	-	36,873
	** 0300012 - Regional Office - XII	3,449	-	-	3,449	3,449	-	-	3,449
	** 0812000 - Division Offices	-	33,424	-	33,424	-	33,424	-	33,424
	> Region XIII - CARAGA	7,155	25,441	-	32,596	7,155	25,441	-	32,596
	** 0300016 - Regional Office - XIII	7,155	-	-	7,155	7,155	-	-	7,155
	** 0816000 - Division Offices	-	25,441	-	25,441	-	25,441	-	25,441
268002000900000	i. Acquisition, Improvements, Survey and Titriling of School Sites	-	11,120	65,000	76,120	-	11,120	-	76,120
	** 0100000 - Central Office	-	-	65,000	65,000	-	-	-	65,000
269002001000000	j. Implementation of the Grant of Cash Allowance, Hardship Pay, Equivalent Records Forms (ERF), Conversion to Master Teacher (MT), Reclassification of Positions and Payment of step increments	2,709,719	1,965,679	-	4,675,398	2,709,719	1,965,679	-	4,675,398
	** 0100000 - Central Office	-	983,616	-	983,616	-	983,616	-	983,616
	** 0300013 - Regional Office - NCR	33,441	97,222	-	130,663	33,441	97,222	-	130,663
	** 0300001 - Regional Office - I	163,459	55,406	-	218,865	163,459	55,406	-	218,865
	** 0300002 - Regional Office - II	179,205	38,925	-	218,130	179,205	38,925	-	218,130
	** 0300014 - Regional Office - CAR	143,821	20,615	-	164,436	143,821	20,615	-	164,436
	** 0300003 - Regional Office - III	133,101	100,785	-	233,886	133,101	100,785	-	233,886
	** 0300004 - Regional Office - IVA	112,049	115,881	-	227,930	112,049	115,881	-	227,930
	** 0300017 - Regional Office - IVB	202,711	37,123	-	239,834	202,711	37,123	-	239,834
	** 0300005 - Regional Office - V	251,692	74,889	-	326,581	251,692	74,889	-	326,581
	** 0300006 - Regional Office - VI	224,246	85,064	-	309,310	224,246	85,064	-	309,310
	** 0300007 - Regional Office - VII	177,152	78,227	-	255,379	177,152	78,227	-	255,379
	** 0300008 - Regional Office - VIII	233,129	59,903	-	293,032	233,129	59,903	-	293,032
	** 0300009 - Regional Office - IX	198,490	43,577	-	242,067	198,490	43,577	-	242,067
	** 0300010 - Regional Office - X	198,806	47,673	-	246,479	198,806	47,673	-	246,479
	** 0300011 - Regional Office - XI	130,176	47,591	-	177,767	130,176	47,591	-	177,767
	** 0300012 - Regional Office - XII	103,952	46,183	-	150,135	103,952	46,183	-	150,135
	** 0300016 - Regional Office - XIII	224,289	32,999	-	257,288	224,289	32,999	-	257,288
	1. Special Hardship Allowance	2,152,162	-	-	2,152,162	2,152,162	-	-	2,152,162

UACS	PARTICULARS	APPROPRIATIONS				COMPREHENSIVE RELEASE (ANNEX A)			
		PS	MOOE	CO	TOTAL	PS	MOOE	CO	TOTAL
	** 0300013 - Regional Office - NCR	4,147	-	-	4,147	4,147	-	-	4,147
	** 0300001 - Regional Office - I	102,281	-	-	102,281	102,281	-	-	102,281
	** 0300002 - Regional Office - II	106,936	-	-	106,936	106,936	-	-	106,936
	** 0300014 - Regional Office - CAR	123,783	-	-	123,783	123,783	-	-	123,783
	** 0300003 - Regional Office - III	63,617	-	-	63,617	63,617	-	-	63,617
	** 0300004 - Regional Office - IVA	82,946	-	-	82,946	82,946	-	-	82,946
	** 0300017 - Regional Office - IVB	181,928	-	-	181,928	181,928	-	-	181,928
	** 0300005 - Regional Office - V	225,431	-	-	225,431	225,431	-	-	225,431
	** 0300006 - Regional Office - VI	159,407	-	-	159,407	159,407	-	-	159,407
	** 0300007 - Regional Office - VII	152,360	-	-	152,360	152,360	-	-	152,360
	** 0300008 - Regional Office - VIII	215,938	-	-	215,938	215,938	-	-	215,938
	** 0300009 - Regional Office - IX	166,302	-	-	166,302	166,302	-	-	166,302
	** 0300010 - Regional Office - X	158,217	-	-	158,217	158,217	-	-	158,217
	** 0300011 - Regional Office - XI	116,029	-	-	116,029	116,029	-	-	116,029
	** 0300012 - Regional Office - XII	91,751	-	-	91,751	91,751	-	-	91,751
	** 0300016 - Regional Office - XIII	201,089	-	-	201,089	201,089	-	-	201,089
	2. Salary Upgrading due to Equivalent Records Forms (ERFs)	271,272	-	-	271,272	271,272	-	-	271,272
	** 0300013 - Regional Office - NCR	10,000	-	-	10,000	10,000	-	-	10,000
	** 0300001 - Regional Office - I	50,178	-	-	50,178	50,178	-	-	50,178
	** 0300002 - Regional Office - II	47,795	-	-	47,795	47,795	-	-	47,795
	** 0300014 - Regional Office - CAR	17,793	-	-	17,793	17,793	-	-	17,793
	** 0300003 - Regional Office - III	29,757	-	-	29,757	29,757	-	-	29,757
	** 0300004 - Regional Office - IVA	7,600	-	-	7,600	7,600	-	-	7,600
	** 0300017 - Regional Office - IVB	10,395	-	-	10,395	10,395	-	-	10,395
	** 0300005 - Regional Office - V	15,000	-	-	15,000	15,000	-	-	15,000
	** 0300006 - Regional Office - VI	25,241	-	-	25,241	25,241	-	-	25,241
	** 0300007 - Regional Office - VII	2,495	-	-	2,495	2,495	-	-	2,495
	** 0300008 - Regional Office - VIII	9,457	-	-	9,457	9,457	-	-	9,457
	** 0300009 - Regional Office - IX	16,849	-	-	16,849	16,849	-	-	16,849
	** 0300010 - Regional Office - X	16,511	-	-	16,511	16,511	-	-	16,511
	** 0300011 - Regional Office - XI	3,537	-	-	3,537	3,537	-	-	3,537
	** 0300012 - Regional Office - XII	5,000	-	-	5,000	5,000	-	-	5,000
	** 0300016 - Regional Office - XIII	3,664	-	-	3,664	3,664	-	-	3,664
	3. Salary Upgrading due to Conversion of Teaching Items to Master Teacher	160,529	-	-	160,529	160,529	-	-	160,529
	** 0300013 - Regional Office - NCR	5,000	-	-	5,000	5,000	-	-	5,000
	** 0300001 - Regional Office - I	1,000	-	-	1,000	1,000	-	-	1,000
	** 0300002 - Regional Office - II	19,686	-	-	19,686	19,686	-	-	19,686
	** 0300014 - Regional Office - CAR	1,145	-	-	1,145	1,145	-	-	1,145
	** 0300003 - Regional Office - III	30,263	-	-	30,263	30,263	-	-	30,263

DEPARTMENT OF EDUCATION
OFFICE OF THE SECRETARY
SUMMARY OF APPROPRIATIONS BY PI/FP UNDER FCR
FY 2017 GAA

(In Thousand Pesos)

UACS	PARTICULARS	APPROPRIATIONS				COMPREHENSIVE RELEASE (ANNEX A)			
		PS	MOOE	CO	TOTAL	PS	MOOE	CO	TOTAL
	** 0300004 - Regional Office - IVA	3,900	-	-	3,900	3,900	-	-	3,900
	** 0300017 - Regional Office - IVB	4,158	-	-	4,158	4,158	-	-	4,158
	** 0300005 - Regional Office - V	5,603	-	-	5,603	5,603	-	-	5,603
	** 0300006 - Regional Office - VI	28,563	-	-	28,563	28,563	-	-	28,563
	** 0300007 - Regional Office - VII	1,700	-	-	1,700	1,700	-	-	1,700
	** 0300008 - Regional Office - VIII	5,159	-	-	5,159	5,159	-	-	5,159
	** 0300009 - Regional Office - IX	10,746	-	-	10,746	10,746	-	-	10,746
	** 0300010 - Regional Office - X	21,580	-	-	21,580	21,580	-	-	21,580
	** 0300011 - Regional Office - XI	4,244	-	-	4,244	4,244	-	-	4,244
	** 0300012 - Regional Office - XII	5,000	-	-	5,000	5,000	-	-	5,000
	** 0300016 - Regional Office - XIII	12,782	-	-	12,782	12,782	-	-	12,782
	4. Salary Upgrading due to Reclassification of Positions	125,756	-	-	125,756	125,756	-	-	125,756
	** 0300013 - Regional Office - NCR	14,294	-	-	14,294	14,294	-	-	14,294
	** 0300001 - Regional Office - I	10,000	-	-	10,000	10,000	-	-	10,000
	** 0300002 - Regional Office - II	4,788	-	-	4,788	4,788	-	-	4,788
	** 0300014 - Regional Office - CAR	1,100	-	-	1,100	1,100	-	-	1,100
	** 0300003 - Regional Office - III	9,464	-	-	9,464	9,464	-	-	9,464
	** 0300004 - Regional Office - IVA	17,603	-	-	17,603	17,603	-	-	17,603
	** 0300017 - Regional Office - IVB	6,230	-	-	6,230	6,230	-	-	6,230
	** 0300005 - Regional Office - V	5,658	-	-	5,658	5,658	-	-	5,658
	** 0300006 - Regional Office - VI	11,035	-	-	11,035	11,035	-	-	11,035
	** 0300007 - Regional Office - VII	20,597	-	-	20,597	20,597	-	-	20,597
	** 0300008 - Regional Office - VIII	2,575	-	-	2,575	2,575	-	-	2,575
	** 0300009 - Regional Office - IX	4,593	-	-	4,593	4,593	-	-	4,593
	** 0300010 - Regional Office - X	2,498	-	-	2,498	2,498	-	-	2,498
	** 0300011 - Regional Office - XI	6,366	-	-	6,366	6,366	-	-	6,366
	** 0300012 - Regional Office - XII	2,201	-	-	2,201	2,201	-	-	2,201
	** 0300016 - Regional Office - XIII	6,754	-	-	6,754	6,754	-	-	6,754
	5. Grant of Cash Allowance	-	1,965,679	-	1,965,679	-	1,965,679	-	1,965,679
	** 0100000 - Central Office	-	983,616	-	983,616	-	983,616	-	983,616
	** 0300013 - Regional Office - NCR	-	97,222	-	97,222	-	97,222	-	97,222
	** 0300001 - Regional Office - I	-	55,406	-	55,406	-	55,406	-	55,406
	** 0300002 - Regional Office - II	-	38,925	-	38,925	-	38,925	-	38,925
	** 0300014 - Regional Office - CAR	-	20,615	-	20,615	-	20,615	-	20,615
	** 0300003 - Regional Office - III	-	100,785	-	100,785	-	100,785	-	100,785
	** 0300004 - Regional Office - IVA	-	115,881	-	115,881	-	115,881	-	115,881
	** 0300017 - Regional Office - IVB	-	37,123	-	37,123	-	37,123	-	37,123
	** 0300005 - Regional Office - V	-	74,889	-	74,889	-	74,889	-	74,889
	** 0300006 - Regional Office - VI	-	85,064	-	85,064	-	85,064	-	85,064

DEPARTMENT OF EDUCATION
OFFICE OF THE SECRETARY
SUMMARY OF APPROPRIATIONS BY PI/FP UNDER FCR
FY 2017 GAA
(In Thousand Pesos)

UACS	PARTICULARS	APPROPRIATIONS				COMPREHENSIVE RELEASE (ANNEX A)			
		PS	MOOE	CO	TOTAL	PS	MOOE	CO	TOTAL
266002001100000	k. Health and Nutrition Services								
	> National Capital Region (NCR)								
	** 0100000 - Central Office (School Health and Nutrition Center)	764,406	4,219,657	-	4,984,063	764,406	4,219,657	-	4,984,063
	** 0300013 - Regional Office - NCR	80,357	998,366	-	1,078,723	80,357	998,366	-	1,078,723
	** 0300013 - Regional Office - NCR	31,472	620,774	-	652,246	31,472	620,774	-	652,246
	** 0813000 - Division Offices	16,949	377,592	-	394,541	16,949	377,592	-	394,541
	> Region I - Ilocos	31,936	-	-	31,936	31,936	-	-	31,936
	** 0300001 - Regional Office - I	83,739	216,613	-	300,352	83,739	216,613	-	300,352
	** 0801000 - Division Offices	17,826	216,613	-	234,439	17,826	216,613	-	234,439
	> Region II - Cagayan Valley	65,913	-	-	65,913	65,913	-	-	65,913
	** 0300002 - Regional Office - II	29,890	106,220	-	136,110	29,890	106,220	-	136,110
	** 0802000 - Division Offices	13,824	106,220	-	120,044	13,824	106,220	-	120,044
	> Cordillera Administrative Region (CAR)	16,066	-	-	16,066	16,066	-	-	16,066
	** 0300014 - Regional Office - CAR	13,918	24,808	-	38,726	13,918	24,808	-	38,726
	> Region III - Central Luzon	13,918	24,808	-	38,726	13,918	24,808	-	38,726
	** 0300003 - Regional Office - III	13,185	312,291	-	325,476	13,185	312,291	-	325,476
	> Region IVA - CALABARZON	13,185	312,291	-	325,476	13,185	312,291	-	325,476
	** 0300004 - Regional Office - IVA	86,889	713,737	-	800,626	86,889	713,737	-	800,626
	** 0804000 - Division Offices	14,804	713,737	-	728,541	14,804	713,737	-	728,541
	> Region IVB - MIMAROPA	72,085	-	-	72,085	72,085	-	-	72,085
	** 0300017 - Regional Office - IVB	31,561	198,772	-	230,333	31,561	198,772	-	230,333
	** 0817000 - Division Offices	8,919	198,772	-	207,691	8,919	198,772	-	207,691
	> Region V - Bicol	22,642	-	-	22,642	22,642	-	-	22,642
	** 0300005 - Regional Office - V	18,019	371,714	-	389,733	18,019	371,714	-	389,733
	> Region VI - Western Visayas	18,019	371,714	-	389,733	18,019	371,714	-	389,733
	** 0300006 - Regional Office - VI	42,073	229,781	-	271,854	42,073	229,781	-	271,854
	** 0806000 - Division Offices	18,286	229,781	-	248,067	18,286	229,781	-	248,067
	> Region VII - Central Visayas	23,787	-	-	23,787	23,787	-	-	23,787
	** 0300007 - Regional Office - VII	81,802	148,863	-	230,665	81,802	148,863	-	230,665
	** 0807000 - Division Offices	9,875	148,863	-	158,738	9,875	148,863	-	158,738
	> Region VIII - Eastern Visayas	71,927	-	-	71,927	71,927	-	-	71,927
	** 0300008 - Regional Office - VIII	36,342	193,812	-	230,154	36,342	193,812	-	230,154
	** 0808000 - Division Offices	16,218	193,812	-	210,030	16,218	193,812	-	210,030
		20,124	-	-	20,124	20,124	-	-	20,124

DEPARTMENT OF EDUCATION
OFFICE OF THE SECRETARY
SUMMARY OF APPROPRIATIONS BY PI/AP UNDER FCR
FY 2017 GAA
(In Thousand Pesos)

UACS	PARTICULARS	APPROPRIATIONS				COMPREHENSIVE RELEASE (ANNEX A)				
		PS	MOOE	CO	TOTAL	PS	MOOE	CO	TOTAL	
										PS
	> Region IX - Zamboanga Peninsula	71,798	147,856	-	219,654	71,798	147,856	-	219,654	
	** 0300009 - Regional Office - IX	16,201	147,856	-	164,057	16,201	147,856	-	164,057	
	** 0809000 - Division Offices	55,597	-	-	55,597	55,597	-	-	55,597	
	> Region X - Northern Mindanao	81,449	164,242	-	245,691	81,449	164,242	-	245,691	
	** 0300010 - Regional Office - X	11,255	164,242	-	175,497	11,255	164,242	-	175,497	
	** 0810000 - Division Offices	70,194	-	-	70,194	70,194	-	-	70,194	
	> Region XI - Davao	12,267	84,683	-	96,950	12,267	84,683	-	96,950	
	** 0300011 - Regional Office - XI	12,267	84,683	-	96,950	12,267	84,683	-	96,950	
	> Region XII - SOCCSKSARGEN	41,490	193,447	-	234,937	41,490	193,447	-	234,937	
	** 0300012 - Regional Office - XII	9,431	193,447	-	202,878	9,431	193,447	-	202,878	
	** 0812000 - Division Offices	32,059	-	-	32,059	32,059	-	-	32,059	
	> Region XIII - CARAGA	39,627	114,452	-	154,079	39,627	114,452	-	154,079	
	** 0300016 - Regional Office - XIII	11,278	114,452	-	125,730	11,278	114,452	-	125,730	
	** 0816000 - Division Offices	28,349	-	-	28,349	28,349	-	-	28,349	
	Sub-Total, Support To Operations	3,670,251	10,848,061	67,500	14,585,812	3,670,251	10,848,061	2,500	14,585,812	
000003000000000	III. Operations	312,566,613	65,003,416	135,291,091	512,861,120	257,493,819	62,428,843	20,355,074	343,261,308	
000003010000000	a. MFO 1: BASIC EDUCATION POLICY SERVICES	78,512	209,545	-	288,057	78,512	209,545	-	288,057	
000003010100000	1. Policy Formulation	78,512	209,545	-	288,057	78,512	209,545	-	288,057	
269003010100001	a. Basic Education Curriculum	44,813	194,558	-	239,371	44,813	194,558	-	239,371	
269003010100002	b. Continuing Education	44,813	194,558	-	239,371	44,813	194,558	-	239,371	
269003010100003	c. Pre-Service Education	-	4,414	-	4,414	-	4,414	-	4,414	
269003010100004	d. Development, procurement and equitable distribution of learning resources	33,699	4,869	-	38,568	33,699	4,869	-	38,568	
000003020000000	b. MFO 2: BASIC EDUCATION SERVICES	312,488,101	29,024,728	135,291,091	476,803,920	257,415,307	26,450,155	20,355,074	307,204,108	
270003020100000	2. Curricular programs, learning management models, standards and strategy development	5,273,093	2,085	-	5,275,178	5,273,093	2,085	-	5,275,178	
	> National Capital Region (NCR)	342,209	2,085	-	344,294	342,209	2,085	-	344,294	
	** 0100000 - Central Office (Bureau of Elementary Education)	-	2,085	-	2,085	-	2,085	-	2,085	
	** 0300013 - Regional Office - NCR	21,372	-	-	21,372	21,372	-	-	21,372	
	** 0813000 - Division Offices	320,837	-	-	320,837	320,837	-	-	320,837	
	> Region I - Ilocos	363,420	-	-	363,420	363,420	-	-	363,420	
	** 0300001 - Regional Office - I	17,446	-	-	17,446	17,446	-	-	17,446	
	** 0801000 - Division Offices	345,974	-	-	345,974	345,974	-	-	345,974	

DEPARTMENT OF EDUCATION
OFFICE OF THE SECRETARY
SUMMARY OF APPROPRIATIONS BY PI/AP UNDER FCR
FY 2017 GAA
(In Thousand Pesos)

Annex A

UACS	PARTICULARS	APPROPRIATIONS				COMPREHENSIVE RELEASE (ANNEX A)				
		PS	MOOE	CO	TOTAL	PS	MOOE	CO	TOTAL	
	> Region II - Cagayan Valley	243,288	-	-	243,288	243,288	-	-	243,288	
	** 0300002 - Regional Office - II	21,413	-	-	21,413	21,413	-	-	21,413	
	** 0802000 - Division Offices	221,875	-	-	221,875	221,875	-	-	221,875	
	> Cordillera Administrative Region (CAR)	183,126	-	-	183,126	183,126	-	-	183,126	
	** 0300014 - Regional Office - CAR	19,039	-	-	19,039	19,039	-	-	19,039	
	** 0814000 - Division Offices	164,087	-	-	164,087	164,087	-	-	164,087	
	> Region III - Central Luzon	529,645	-	-	529,645	529,645	-	-	529,645	
	** 0300003 - Regional Office - III	20,742	-	-	20,742	20,742	-	-	20,742	
	** 0803000 - Division Offices	508,903	-	-	508,903	508,903	-	-	508,903	
	> Region IVA - CALABARZON	516,586	-	-	516,586	516,586	-	-	516,586	
	** 0300004 - Regional Office - IVA	23,095	-	-	23,095	23,095	-	-	23,095	
	** 0804000 - Division Offices	493,491	-	-	493,491	493,491	-	-	493,491	
	> Region IVB - MIMAROPA	199,327	-	-	199,327	199,327	-	-	199,327	
	** 0300017 - Regional Office - IVB	21,627	-	-	21,627	21,627	-	-	21,627	
	** 0817000 - Division Offices	177,700	-	-	177,700	177,700	-	-	177,700	
	> Region V - Bicol	420,256	-	-	420,256	420,256	-	-	420,256	
	** 0300005 - Regional Office - V	23,117	-	-	23,117	23,117	-	-	23,117	
	** 0805000 - Division Offices	397,139	-	-	397,139	397,139	-	-	397,139	
	> Region VI - Western Visayas	478,639	-	-	478,639	478,639	-	-	478,639	
	** 0300006 - Regional Office - VI	18,542	-	-	18,542	18,542	-	-	18,542	
	** 0806000 - Division Offices	460,097	-	-	460,097	460,097	-	-	460,097	
	> Region VII - Central Visayas	373,372	-	-	373,372	373,372	-	-	373,372	
	** 0300007 - Regional Office - VII	18,270	-	-	18,270	18,270	-	-	18,270	
	** 0807000 - Division Offices	355,102	-	-	355,102	355,102	-	-	355,102	
	> Region VIII - Eastern Visayas	317,876	-	-	317,876	317,876	-	-	317,876	
	** 0300008 - Regional Office - VIII	21,488	-	-	21,488	21,488	-	-	21,488	
	** 0808000 - Division Offices	296,388	-	-	296,388	296,388	-	-	296,388	
	> Region IX - Zamboanga Peninsula	240,266	-	-	240,266	240,266	-	-	240,266	
	** 0300009 - Regional Office - IX	23,154	-	-	23,154	23,154	-	-	23,154	
	** 0809000 - Division Offices	217,112	-	-	217,112	217,112	-	-	217,112	
	> Region X - Northern Mindanao	289,324	-	-	289,324	289,324	-	-	289,324	
	** 0300010 - Regional Office - X	16,983	-	-	16,983	16,983	-	-	16,983	
	** 0810000 - Division Offices	272,341	-	-	272,341	272,341	-	-	272,341	
	> Region XI - Davao	236,931	-	-	236,931	236,931	-	-	236,931	
	** 0300011 - Regional Office - XI	23,404	-	-	23,404	23,404	-	-	23,404	
	** 0811000 - Division Offices	213,527	-	-	213,527	213,527	-	-	213,527	
	> Region XII - SOCCSKSARGEN	256,077	-	-	256,077	256,077	-	-	256,077	
	** 0300012 - Regional Office - XII	23,051	-	-	23,051	23,051	-	-	23,051	
	** 0812000 - Division Offices	233,026	-	-	233,026	233,026	-	-	233,026	

DEPARTMENT OF EDUCATION
OFFICE OF THE SECRETARY
SUMMARY OF APPROPRIATIONS BY PI/FP UNDER FCR
FY 2017 GAA
(In Thousand Pesos)

Annex A

UACS	PARTICULARS	APPROPRIATIONS				COMPREHENSIVE RELEASE (ANNEX A)			
		PS	MOOE	CO	TOTAL	PS	MOOE	CO	TOTAL
	> Region XIII - CARAGA	282,751	-	-	282,751	282,751	-	-	282,751
	** 0300016 - Regional Office - XIII	21,071	-	-	21,071	21,071	-	-	21,071
	** 0816000 - Division Offices	261,680	-	-	261,680	261,680	-	-	261,680
000003020200000	3. Co-curricular and special learning support program development	-	167,097	7,260,000	7,427,097	-	167,097	7,260,000	7,427,097
	a. Every Child A Reader Program (ECARP)	-	56,487	-	56,487	-	56,487	-	56,487
	** 0100000 - Central Office	-	56,487	-	56,487	-	56,487	-	56,487
262003020200002	b. Development and Promotion of Campus Journalism	-	11,338	-	11,338	-	11,338	-	11,338
	** 0100000 - Central Office	-	11,338	-	11,338	-	11,338	-	11,338
262003020200008	h. Implementation of the Redesignated Technical-Vocational High School Program	-	16,246	7,260,000	7,276,246	-	16,246	7,260,000	7,276,246
	** 0100000 - Central Office	-	16,246	590,000	606,246	-	16,246	590,000	606,246
	** 0300013 - Regional Office - NCR	-	-	237,000	237,000	-	-	237,000	237,000
	** 0300001 - Regional Office - I	-	-	524,000	524,000	-	-	524,000	524,000
	** 0300002 - Regional Office - II	-	-	319,000	319,000	-	-	319,000	319,000
	** 0300014 - Regional Office - CAR	-	-	157,000	157,000	-	-	157,000	157,000
	** 0300003 - Regional Office - III	-	-	665,000	665,000	-	-	665,000	665,000
	** 0300004 - Regional Office - IVA	-	-	599,000	599,000	-	-	599,000	599,000
	** 0300017 - Regional Office - IVB	-	-	312,000	312,000	-	-	312,000	312,000
	** 0300005 - Regional Office - V	-	-	708,000	708,000	-	-	708,000	708,000
	** 0300006 - Regional Office - VI	-	-	379,000	379,000	-	-	379,000	379,000
	** 0300007 - Regional Office - VII	-	-	593,000	593,000	-	-	593,000	593,000
	** 0300008 - Regional Office - VIII	-	-	395,000	395,000	-	-	395,000	395,000
	** 0300009 - Regional Office - IX	-	-	239,000	239,000	-	-	239,000	239,000
	** 0300010 - Regional Office - X	-	-	401,000	401,000	-	-	401,000	401,000
	** 0300011 - Regional Office - XI	-	-	379,000	379,000	-	-	379,000	379,000
	** 0300012 - Regional Office - XII	-	-	415,000	415,000	-	-	415,000	415,000
	** 0300016 - Regional Office - XIII	-	-	348,000	348,000	-	-	348,000	348,000
261003020200009	i. Support to Multi-grade Schools	-	83,026	-	83,026	-	83,026	-	83,026
	** 0100000 - Central Office	-	83,026	-	83,026	-	83,026	-	83,026
270003020300000	4. Implementation of Indigenous Peoples Education Program	-	162,000	-	162,000	-	162,000	-	162,000
	** 0100000 - Central Office	-	162,000	-	162,000	-	162,000	-	162,000
270003020400000	5. Implementation of Alternative Learning and Delivery Mode Programs, including requirement of Learning Centers	-	553,436	100,000	653,436	-	553,436	100,000	653,436
	** 0100000 - Central Office	-	553,436	100,000	653,436	-	553,436	100,000	653,436
000003020500000	6. Operations of Schools	307,214,721	-	100,000	307,314,721	-	-	100,000	307,314,721
	a. Kindergarten	3,333,034	-	104,000	3,437,034	-	-	104,000	3,437,034
	> Region I - Ilocos	78,178	-	-	78,178	-	-	-	78,178
	** 0801000 - Division Offices	78,178	-	-	78,178	-	-	-	78,178
	> Region II - Cagayan Valley	133,604	-	-	133,604	-	-	-	133,604
	** 0802000 - Division Offices	133,604	-	-	133,604	-	-	-	133,604

DEPARTMENT OF EDUCATION
OFFICE OF THE SECRETARY
SUMMARY OF APPROPRIATIONS BY PI/AP UNDER FCR
FY 2017 GAA
(In Thousand Pesos)

Annex A

UACS	PARTICULARS	APPROPRIATIONS				COMPREHENSIVE RELEASE (ANNEX A)				
		PS	MOOE	CO	TOTAL	PS	MOOE	CO	TOTAL	
	> Cordillera Administrative Region (CAR)	87,219	-	-	87,219	87,219	-	-	87,219	
	** 0814000 - Division Offices	87,219	-	-	87,219	87,219	-	-	87,219	
	> Region III - Central Luzon	408,206	-	-	408,206	408,206	-	-	408,206	
	** 0803000 - Division Offices	408,206	-	-	408,206	408,206	-	-	408,206	
	> Region IVA - CALABARZON	357,761	-	-	357,761	357,761	-	-	357,761	
	** 0804000 - Division Offices	357,761	-	-	357,761	357,761	-	-	357,761	
	> Region IVB - MIMAROPA	189,632	-	-	189,632	189,632	-	-	189,632	
	** 0817000 - Division Offices	189,632	-	-	189,632	189,632	-	-	189,632	
	> Region V - Bicol	312,109	-	-	312,109	312,109	-	-	312,109	
	** 0805000 - Division Offices	312,109	-	-	312,109	312,109	-	-	312,109	
	> Region VI - Western Visayas	464,386	-	-	464,386	464,386	-	-	464,386	
	** 0806000 - Division Offices	464,386	-	-	464,386	464,386	-	-	464,386	
	> Region VII - Central Visayas	347,149	-	-	347,149	347,149	-	-	347,149	
	** 0807000 - Division Offices	347,149	-	-	347,149	347,149	-	-	347,149	
	> Region VIII - Eastern Visayas	71,207	-	-	71,207	71,207	-	-	71,207	
	** 0808000 - Division Offices	71,207	-	-	71,207	71,207	-	-	71,207	
	> Region IX - Zamboanga Peninsula	233,481	-	-	233,481	233,481	-	-	233,481	
	** 0809000 - Division Offices	233,481	-	-	233,481	233,481	-	-	233,481	
	> Region X - Northern Mindanao	265,168	-	-	265,168	265,168	-	-	265,168	
	** 0810000 - Division Offices	265,168	-	-	265,168	265,168	-	-	265,168	
	> Region XI - Davao	214,023	-	-	214,023	214,023	-	-	214,023	
	** 0811000 - Division Offices	214,023	-	-	214,023	214,023	-	-	214,023	
	> Region XIII - CARAGA	170,911	-	-	170,911	170,911	-	-	170,911	
	** 0816000 - Division Offices	170,911	-	-	170,911	170,911	-	-	170,911	
261003020500002	b. Elementary	163,576,617	10,209,439	104,000	173,890,056	163,576,617	10,209,439	104,000	173,890,056	
	> National Capital Region (NCR)	12,500,404	721,603	8,000	13,230,007	12,500,404	721,603	8,000	13,230,007	
	> Region I - Ilocos	10,055,844	589,343	7,000	10,652,187	10,055,844	589,343	7,000	10,652,187	
	> Region II - Cagayan Valley	7,276,716	441,843	4,500	7,723,059	7,276,716	441,843	4,500	7,723,059	
	> Cordillera Administrative Region (CAR)	3,721,004	247,410	4,000	3,972,414	3,721,004	247,410	4,000	3,972,414	
	> Region III - Central Luzon	16,441,110	1,029,449	10,000	17,480,559	16,441,110	1,029,449	10,000	17,480,559	
	> Region IVA - CALABARZON	17,955,391	1,148,657	9,000	19,113,048	17,955,391	1,148,657	9,000	19,113,048	
	> Region IVB - MIMAROPA	6,330,495	418,784	3,500	6,752,779	6,330,495	418,784	3,500	6,752,779	
	> Region V - Bicol	12,893,639	799,970	6,500	13,700,109	12,893,639	799,970	6,500	13,700,109	
	> Region VI - Western Visayas	14,573,957	896,638	9,000	15,479,595	14,573,957	896,638	9,000	15,479,595	
	> Region VII - Central Visayas	12,871,809	812,843	9,500	13,694,152	12,871,809	812,843	9,500	13,694,152	
	> Region VIII - Eastern Visayas	10,485,027	674,643	6,500	11,166,170	10,485,027	674,643	6,500	11,166,170	
	> Region IX - Zamboanga Peninsula	7,736,016	493,769	4,000	8,233,785	7,736,016	493,769	4,000	8,233,785	
	> Region X - Northern Mindanao	8,407,833	543,357	7,000	8,958,190	8,407,833	543,357	7,000	8,958,190	
	> Region XI - Davao	8,222,910	529,349	5,000	8,757,259	8,222,910	529,349	5,000	8,757,259	

DEPARTMENT OF EDUCATION
OFFICE OF THE SECRETARY
SUMMARY OF APPROPRIATIONS BY PI/AP UNDER FCR
FY 2017 GAA
(In Thousand Pesos)

Annex A

UACS	PARTICULARS	APPROPRIATIONS				COMPREHENSIVE RELEASE (ANNEX A)			
		PS	MOOE	CO	TOTAL	PS	MOOE	CO	TOTAL
262003020500003	> Region XII - SOCCSKSARGEN	8,205,682	501,431	4,500	8,711,613	8,205,682	501,431	4,500	8,711,613
	> Region XIII - CARAGA	5,898,780	360,350	6,000	6,265,130	5,898,780	360,350	6,000	6,265,130
	c. Secondary	85,232,276	11,533,193	-	96,765,469	85,232,276	11,533,193	-	96,765,469
	> National Capital Region (NCR)	10,019,814	4,390,860	-	14,410,674	10,019,814	4,390,860	-	14,410,674
	0100000 - Central Office	-	3,562,090	-	3,562,090	-	3,562,090	-	3,562,090
	0913000 - Secondary Schools (NCR)	10,019,814	828,770	-	10,848,584	10,019,814	828,770	-	10,848,584
	> Region I - Ilocos	5,338,971	475,568	-	5,814,539	5,338,971	475,568	-	5,814,539
	> Region II - Cagayan Valley	3,498,571	316,119	-	3,814,690	3,498,571	316,119	-	3,814,690
	> Cordillera Administrative Region (CAR)	1,662,673	166,252	-	1,828,925	1,662,673	166,252	-	1,828,925
	> Region III - Central Luzon	9,388,734	858,735	-	10,247,469	9,388,734	858,735	-	10,247,469
	> Region IVA - CALABARZON	10,494,036	960,577	-	11,454,613	10,494,036	960,577	-	11,454,613
	> Region IVB - MIMAROPA	3,078,179	304,857	-	3,383,036	3,078,179	304,857	-	3,383,036
	> Region V - Bicol	6,038,204	595,031	-	6,633,235	6,038,204	595,031	-	6,633,235
	> Region VI - Western Visayas	7,394,327	681,847	-	8,076,174	7,394,327	681,847	-	8,076,174
	> Region VII - Central Visayas	6,443,043	657,242	-	7,100,285	6,443,043	657,242	-	7,100,285
	> Region VIII - Eastern Visayas	4,778,462	440,470	-	5,218,932	4,778,462	440,470	-	5,218,932
	> Region IX - Zamboanga Peninsula	3,399,563	322,725	-	3,722,288	3,399,563	322,725	-	3,722,288
	> Region X - Northern Mindanao	3,471,236	344,561	-	3,815,797	3,471,236	344,561	-	3,815,797
	> Region XI - Davao	3,762,042	372,154	-	4,134,196	3,762,042	372,154	-	4,134,196
	> Region XII - SOCCSKSARGEN	3,778,045	377,498	-	4,155,543	3,778,045	377,498	-	4,155,543
	> Region XIII - CARAGA	2,686,376	268,697	-	2,955,073	2,686,376	268,697	-	2,955,073
	d. Creation and Filling up of Positions	55,072,794	-	-	55,072,794	-	-	-	-
	Lump-sum for Filling up of Positions	26,745,369	-	-	26,745,369	-	-	-	-
	** 0300013 - Regional Office - NCR	3,249,541	-	-	3,249,541	-	-	-	-
	** 0300001 - Regional Office - I	1,272,514	-	-	1,272,514	-	-	-	-
	** 0300002 - Regional Office - II	920,219	-	-	920,219	-	-	-	-
** 0300014 - Regional Office - CAR	462,130	-	-	462,130	-	-	-	-	
** 0300003 - Regional Office - III	2,666,012	-	-	2,666,012	-	-	-	-	
** 0300004 - Regional Office - IVA	3,514,341	-	-	3,514,341	-	-	-	-	
** 0300017 - Regional Office - IVB	1,029,471	-	-	1,029,471	-	-	-	-	
** 0300005 - Regional Office - V	1,838,683	-	-	1,838,683	-	-	-	-	
** 0300006 - Regional Office - VI	1,782,497	-	-	1,782,497	-	-	-	-	
** 0300007 - Regional Office - VII	2,691,659	-	-	2,691,659	-	-	-	-	
** 0300008 - Regional Office - VIII	1,582,280	-	-	1,582,280	-	-	-	-	
** 0300009 - Regional Office - IX	996,073	-	-	996,073	-	-	-	-	
** 0300010 - Regional Office - X	1,391,196	-	-	1,391,196	-	-	-	-	
** 0300011 - Regional Office - XI	1,397,399	-	-	1,397,399	-	-	-	-	
** 0300012 - Regional Office - XII	1,151,912	-	-	1,151,912	-	-	-	-	
** 0300016 - Regional Office - XIII	799,442	-	-	799,442	-	-	-	-	

UACS	PARTICULARS	APPROPRIATIONS				COMPREHENSIVE RELEASE (ANNEX A)			
		PS	MOOE	CO	TOTAL	PS	MOOE	CO	TOTAL
		Lump-sum for Creation of Positions FY 2016 and FY 2017							
	** 0100000 - Central Office	28,327,425	-	-	28,327,425	-	-	-	-
	** 0300013 - Regional Office - NCR	2,924,912	-	-	2,924,912	-	-	-	-
	** 0300001 - Regional Office - I	902,019	-	-	902,019	-	-	-	-
	** 0300002 - Regional Office - II	1,654,499	-	-	1,654,499	-	-	-	-
	** 0300014 - Regional Office - CAR	1,001,156	-	-	1,001,156	-	-	-	-
	** 0300003 - Regional Office - III	351,509	-	-	351,509	-	-	-	-
	** 0300004 - Regional Office - IVA	2,545,285	-	-	2,545,285	-	-	-	-
	** 0300017 - Regional Office - IVB	3,328,180	-	-	3,328,180	-	-	-	-
	** 0300005 - Regional Office - V	1,819,933	-	-	1,819,933	-	-	-	-
	** 0300006 - Regional Office - VI	2,264,818	-	-	2,264,818	-	-	-	-
	** 0300007 - Regional Office - VII	1,810,685	-	-	1,810,685	-	-	-	-
	** 0300008 - Regional Office - VIII	1,827,810	-	-	1,827,810	-	-	-	-
	** 0300009 - Regional Office - IX	1,838,336	-	-	1,838,336	-	-	-	-
	** 0300010 - Regional Office - X	1,116,712	-	-	1,116,712	-	-	-	-
	** 0300011 - Regional Office - XI	1,318,975	-	-	1,318,975	-	-	-	-
	** 0300012 - Regional Office - XII	1,292,227	-	-	1,292,227	-	-	-	-
	** 0300016 - Regional Office - XIII	1,231,852	-	-	1,231,852	-	-	-	-
	** 0300016 - Regional Office - XIII	1,098,517	-	-	1,098,517	-	-	-	-
000003020600000	7. Provision of learning resources	-	3,218,208	11,219,158	14,437,366	-	3,218,208	11,219,158	14,437,366
270003020600001	a. Textbooks/Instructional Materials (including P100M for Children with special needs)	-	2,990,831	50,000	3,040,831	-	2,990,831	50,000	3,040,831
	** 0100000 - Central Office	-	775,133	50,000	825,133	-	775,133	50,000	825,133
	** 0300013 - Regional Office - NCR	-	42,832	-	42,832	-	42,832	-	42,832
	** 0300001 - Regional Office - I	-	129,379	-	129,379	-	129,379	-	129,379
	** 0300002 - Regional Office - II	-	88,730	-	88,730	-	88,730	-	88,730
	** 0300014 - Regional Office - CAR	-	89,168	-	89,168	-	89,168	-	89,168
	** 0300003 - Regional Office - III	-	272,155	-	272,155	-	272,155	-	272,155
	** 0300004 - Regional Office - IVA	-	329,436	-	329,436	-	329,436	-	329,436
	** 0300017 - Regional Office - IVB	-	92,491	-	92,491	-	92,491	-	92,491
	** 0300005 - Regional Office - V	-	187,492	-	187,492	-	187,492	-	187,492
	** 0300006 - Regional Office - VI	-	116,289	-	116,289	-	116,289	-	116,289
	** 0300007 - Regional Office - VII	-	162,247	-	162,247	-	162,247	-	162,247
	** 0300008 - Regional Office - VIII	-	139,834	-	139,834	-	139,834	-	139,834
	** 0300009 - Regional Office - IX	-	106,967	-	106,967	-	106,967	-	106,967
	** 0300010 - Regional Office - X	-	123,576	-	123,576	-	123,576	-	123,576
	** 0300011 - Regional Office - XI	-	130,297	-	130,297	-	130,297	-	130,297
	** 0300012 - Regional Office - XII	-	124,072	-	124,072	-	124,072	-	124,072
	** 0300016 - Regional Office - XIII	-	80,733	-	80,733	-	80,733	-	80,733
270003020600002	b. Science and Mathematics Equipment	-	-	4,543,176	4,543,176	-	-	4,543,176	4,543,176

DEPARTMENT OF EDUCATION
OFFICE OF THE SECRETARY
SUMMARY OF APPROPRIATIONS BY P/IA/P UNDER FCR
FY 2017 GAA
(In Thousand Pesos)

UACS	PARTICULARS	APPROPRIATIONS				COMPREHENSIVE RELEASE (ANNEX A)			
		PS	MOOE	CO	TOTAL	PS	MOOE	CO	TOTAL
	** 0100000 - Central Office	-	-	348,408	348,408	-	-	348,408	348,408
	** 0300013 - Regional Office - NCR	-	-	265,133	265,133	-	-	265,133	265,133
	** 0300001 - Regional Office - I	-	-	342,826	342,826	-	-	342,826	342,826
	** 0300002 - Regional Office - II	-	-	250,759	250,759	-	-	250,759	250,759
	** 0300014 - Regional Office - CAR	-	-	143,797	143,797	-	-	143,797	143,797
	** 0300003 - Regional Office - III	-	-	394,220	394,220	-	-	394,220	394,220
	** 0300004 - Regional Office - IVA	-	-	385,651	385,651	-	-	385,651	385,651
	** 0300017 - Regional Office - IVB	-	-	198,879	198,879	-	-	198,879	198,879
	** 0300005 - Regional Office - V	-	-	387,069	387,069	-	-	387,069	387,069
	** 0300006 - Regional Office - VI	-	-	229,587	229,587	-	-	229,587	229,587
	** 0300007 - Regional Office - VII	-	-	318,078	318,078	-	-	318,078	318,078
	** 0300008 - Regional Office - VIII	-	-	310,060	310,060	-	-	310,060	310,060
	** 0300009 - Regional Office - IX	-	-	140,127	140,127	-	-	140,127	140,127
	** 0300010 - Regional Office - X	-	-	192,982	192,982	-	-	192,982	192,982
	** 0300011 - Regional Office - XI	-	-	205,045	205,045	-	-	205,045	205,045
	** 0300012 - Regional Office - XII	-	-	185,351	185,351	-	-	185,351	185,351
	** 0300016 - Regional Office - XIII	-	-	245,204	245,204	-	-	245,204	245,204
270003020600003	c. Department of Education Computerization Program	-	227,377	6,625,982	6,853,359	227,377	6,625,982	6,853,359	6,853,359
	** 0100000 - Central Office	-	227,377	1,864,847	2,092,224	227,377	1,864,847	2,092,224	2,092,224
	** 0300013 - Regional Office - NCR	-	-	62,140	62,140	-	-	62,140	62,140
	** 0300001 - Regional Office - I	-	-	260,089	260,089	-	-	260,089	260,089
	** 0300002 - Regional Office - II	-	-	269,388	269,388	-	-	269,388	269,388
	** 0300014 - Regional Office - CAR	-	-	270,417	270,417	-	-	270,417	270,417
	** 0300003 - Regional Office - III	-	-	336,303	336,303	-	-	336,303	336,303
	** 0300004 - Regional Office - IVA	-	-	332,265	332,265	-	-	332,265	332,265
	** 0300017 - Regional Office - IVB	-	-	323,138	323,138	-	-	323,138	323,138
	** 0300005 - Regional Office - V	-	-	417,445	417,445	-	-	417,445	417,445
	** 0300006 - Regional Office - VI	-	-	237,886	237,886	-	-	237,886	237,886
	** 0300007 - Regional Office - VII	-	-	273,053	273,053	-	-	273,053	273,053
	** 0300008 - Regional Office - VIII	-	-	603,514	603,514	-	-	603,514	603,514
	** 0300009 - Regional Office - IX	-	-	266,642	266,642	-	-	266,642	266,642
	** 0300010 - Regional Office - X	-	-	306,426	306,426	-	-	306,426	306,426
	** 0300011 - Regional Office - XI	-	-	253,103	253,103	-	-	253,103	253,103
	** 0300012 - Regional Office - XII	-	-	276,779	276,779	-	-	276,779	276,779
	** 0300016 - Regional Office - XIII	-	-	272,547	272,547	-	-	272,547	272,547
268003020700000	8. Provision and maintenance of Basic Education Facilities	-	2,474,573	116,307,933	118,782,506	-	2,474,573	116,307,933	118,782,506
	** 0100000 - Central Office	-	1,568,413	33,130,023	34,698,436	-	1,568,413	33,130,023	34,698,436
	** 0300013 - Regional Office - NCR	-	72,202	5,612,310	5,684,512	-	72,202	5,612,310	5,684,512
	** 0300001 - Regional Office - I	-	55,779	5,497,450	5,553,229	-	55,779	5,497,450	5,553,229

DEPARTMENT OF EDUCATION
OFFICE OF THE SECRETARY
SUMMARY OF APPROPRIATIONS BY PI/AP UNDER FCR
FY 2017 GAA
(In Thousand Pesos)

Annex A

UACS	PARTICULARS	APPROPRIATIONS				COMPREHENSIVE RELEASE (ANNEX A)			
		PS	MOOE	CO	TOTAL	PS	MOOE	CO	TOTAL
	** 0300002 - Regional Office - II	-	26,014	2,852,670	2,878,684	-	-	-	186,242
	** 0300014 - Regional Office - CAR	-	15,328	1,750,825	1,766,153	-	-	-	112,544
	** 0300003 - Regional Office - III	-	100,592	8,346,310	8,446,902	-	-	-	130,058
	** 0300004 - Regional Office - IVA	-	168,407	12,689,230	12,857,637	-	-	-	479,329
	** 0300017 - Regional Office - IVB	-	36,417	3,187,495	3,223,912	-	-	-	135,038
	** 0300005 - Regional Office - V	-	76,078	8,744,130	8,820,208	-	-	-	281,857
	** 0300006 - Regional Office - VI	-	62,198	4,819,690	4,881,888	-	-	-	376,378
	** 0300007 - Regional Office - VII	-	73,136	8,001,375	8,074,511	-	-	-	243,625
	** 0300008 - Regional Office - VIII	-	56,356	5,595,815	5,652,171	-	-	-	195,819
	** 0300009 - Regional Office - IX	-	21,637	2,040,745	2,062,382	-	-	-	174,419
	** 0300010 - Regional Office - X	-	47,367	4,471,660	4,519,027	-	-	-	75,197
	** 0300011 - Regional Office - XI	-	45,557	3,941,665	3,987,222	-	-	-	125,943
	** 0300012 - Regional Office - XII	-	25,598	2,487,010	2,512,608	-	-	-	161,777
	** 0300016 - Regional Office - XIII	-	23,494	3,139,530	3,163,024	-	-	-	104,252
	a. Repair and/or Rehabilitation of School Buildings and Wat-San Facilities								
	** 0100000 - Central Office	-	-	391,265	391,265	-	-	-	2,983,572
	** 0300013 - Regional Office - NCR	-	-	161,210	161,210	-	-	-	138,015
	** 0300001 - Regional Office - I	-	-	311,150	311,150	-	-	-	63,079
	** 0300002 - Regional Office - II	-	-	248,920	248,920	-	-	-	186,242
	** 0300014 - Regional Office - CAR	-	-	158,025	158,025	-	-	-	112,544
	** 0300003 - Regional Office - III	-	-	531,160	531,160	-	-	-	130,058
	** 0300004 - Regional Office - IVA	-	-	694,330	694,330	-	-	-	479,329
	** 0300017 - Regional Office - IVB	-	-	250,145	250,145	-	-	-	135,038
	** 0300005 - Regional Office - V	-	-	317,030	317,030	-	-	-	281,857
	** 0300006 - Regional Office - VI	-	-	412,090	412,090	-	-	-	376,378
	** 0300007 - Regional Office - VII	-	-	248,675	248,675	-	-	-	243,625
	** 0300008 - Regional Office - VIII	-	-	232,015	232,015	-	-	-	195,819
	** 0300009 - Regional Office - IX	-	-	191,345	191,345	-	-	-	174,419
	** 0300010 - Regional Office - X	-	-	222,460	222,460	-	-	-	75,197
	** 0300011 - Regional Office - XI	-	-	232,015	232,015	-	-	-	125,943
	** 0300012 - Regional Office - XII	-	-	229,810	229,810	-	-	-	161,777
	** 0300016 - Regional Office - XIII	-	-	162,680	162,680	-	-	-	104,252
	b. Acquisition of School Desks, Furniture and Fixtures								
	** 0100000 - Central Office	-	2,474,573	-	2,474,573	-	-	-	-
	** 0300013 - Regional Office - NCR	-	1,568,413	-	1,568,413	-	-	-	-
	** 0300001 - Regional Office - I	-	72,202	-	72,202	-	-	-	-
	** 0300002 - Regional Office - II	-	55,779	-	55,779	-	-	-	-
	** 0300014 - Regional Office - CAR	-	26,014	-	26,014	-	-	-	-
	** 0300003 - Regional Office - III	-	15,328	-	15,328	-	-	-	-
		-	100,592	-	100,592	-	-	-	-

UACS	PARTICULARS	APPROPRIATIONS				COMPREHENSIVE RELEASE (ANNEX A)			
		PS	MOOE	CO	TOTAL	PS	MOOE	CO	TOTAL
		-	168,407	-	-	168,407	-	-	-
** 0300004 - Regional Office - IVA		36,417	-	-	36,417	-	-	-	-
** 0300017 - Regional Office - IVB		76,078	-	-	76,078	-	-	-	-
** 0300005 - Regional Office - V		62,198	-	-	62,198	-	-	-	-
** 0300006 - Regional Office - VI		73,136	-	-	73,136	-	-	-	-
** 0300007 - Regional Office - VII		56,356	-	-	56,356	-	-	-	-
** 0300008 - Regional Office - VIII		21,637	-	-	21,637	-	-	-	-
** 0300009 - Regional Office - IX		47,367	-	-	47,367	-	-	-	-
** 0300010 - Regional Office - X		45,557	-	-	45,557	-	-	-	-
** 0300011 - Regional Office - XI		25,598	-	-	25,598	-	-	-	-
** 0300012 - Regional Office - XII		23,494	-	-	23,494	-	-	-	-
** 0300016 - Regional Office - XIII		-	65,408,555	-	65,408,555	-	-	-	-
c. New Construction of Classrooms and Wat-San Facilities									
** 0100000 - Central Office		-	27,466,205	-	27,466,205	-	-	-	-
** 0300013 - Regional Office - NCR		-	3,296,100	-	3,296,100	-	-	-	-
** 0300001 - Regional Office - I		-	2,173,800	-	2,173,800	-	-	-	-
** 0300002 - Regional Office - II		-	981,250	-	981,250	-	-	-	-
** 0300014 - Regional Office - CAR		-	570,300	-	570,300	-	-	-	-
** 0300003 - Regional Office - III		-	4,217,650	-	4,217,650	-	-	-	-
** 0300004 - Regional Office - IVA		-	7,539,900	-	7,539,900	-	-	-	-
** 0300017 - Regional Office - IVB		-	1,532,350	-	1,532,350	-	-	-	-
** 0300005 - Regional Office - V		-	3,097,100	-	3,097,100	-	-	-	-
** 0300006 - Regional Office - VI		-	2,472,600	-	2,472,600	-	-	-	-
** 0300007 - Regional Office - VII		-	3,097,700	-	3,097,700	-	-	-	-
** 0300008 - Regional Office - VIII		-	2,423,800	-	2,423,800	-	-	-	-
** 0300009 - Regional Office - IX		-	881,900	-	881,900	-	-	-	-
** 0300010 - Regional Office - X		-	1,924,200	-	1,924,200	-	-	-	-
** 0300011 - Regional Office - XI		-	1,799,650	-	1,799,650	-	-	-	-
** 0300012 - Regional Office - XII		-	989,700	-	989,700	-	-	-	-
** 0300016 - Regional Office - XIII		-	944,350	-	944,350	-	-	-	-
d. Public-Private Partnership - P-SIP / NHA Constructed									
** 0100000 - Central Office		-	1,671,916	-	1,671,916	-	-	-	1,671,916
e. Technical - Vocational Laboratories									
** 0100000 - Central Office		-	1,671,916	-	1,671,916	-	-	-	1,671,916
** 0300013 - Regional Office - NCR		-	43,905,000	-	43,905,000	-	-	-	-
** 0300001 - Regional Office - I		-	3,272,500	-	3,272,500	-	-	-	-
** 0300002 - Regional Office - II		-	3,012,500	-	3,012,500	-	-	-	-
** 0300014 - Regional Office - CAR		-	1,622,500	-	1,622,500	-	-	-	-
** 0300003 - Regional Office - III		-	1,022,500	-	1,022,500	-	-	-	-
** 0300004 - Regional Office - IVA		-	3,597,500	-	3,597,500	-	-	-	-
		-	4,455,000	-	4,455,000	-	-	-	-

DEPARTMENT OF EDUCATION
OFFICE OF THE SECRETARY
SUMMARY OF APPROPRIATIONS BY P/A/P UNDER FCR
FY 2017 GAA
(In Thousand Pesos)

UACS	PARTICULARS	APPROPRIATIONS				COMPREHENSIVE RELEASE (ANNEX A)			
		PS	MOOE	CO	TOTAL	PS	MOOE	CO	TOTAL
	** 0300017 - Regional Office - IVB	-	-	1,405,000	1,405,000	-	-	-	-
	** 0300005 - Regional Office - V	-	-	5,330,000	5,330,000	-	-	-	-
	** 0300006 - Regional Office - VI	-	-	1,935,000	1,935,000	-	-	-	-
	** 0300007 - Regional Office - VIII	-	-	4,655,000	4,655,000	-	-	-	-
	** 0300008 - Regional Office - VIII	-	-	2,940,000	2,940,000	-	-	-	-
	** 0300009 - Regional Office - IX	-	-	967,500	967,500	-	-	-	-
	** 0300010 - Regional Office - X	-	-	2,325,000	2,325,000	-	-	-	-
	** 0300011 - Regional Office - XI	-	-	1,910,000	1,910,000	-	-	-	-
	** 0300012 - Regional Office - XII	-	-	1,267,500	1,267,500	-	-	-	-
	** 0300016 - Regional Office - XIII	-	-	2,032,500	2,032,500	-	-	-	-
	f. Electrification of On-Grid Schools	-	-	328,137	328,137	-	-	-	-
	** 0100000 - Central Office	-	-	328,137	328,137	-	-	-	-
270003020900000	10. Basic Education Madrasah Program	-	-	505,000	505,000	-	-	-	505,000
	** 0100000 - Central Office	-	-	505,000	505,000	-	-	-	505,000
269003021300000	14. Disaster Preparedness Program	287	99,697	-	99,984	287	99,697	-	99,984
	** 0100000 - Central Office	287	99,697	-	99,984	287	99,697	-	99,984
242003021500000	15. Conservation and restoration of Gabaldon and other heritage school buildings	-	-	300,000	300,000	-	-	-	-
	** 0100000 - Central Office	-	-	64	64	-	-	-	-
	** 0300013 - Regional Office - NCR	-	-	37,360	37,360	-	-	-	-
	** 0300001 - Regional Office - I	-	-	48,100	48,100	-	-	-	-
	** 0300002 - Regional Office - II	-	-	29,160	29,160	-	-	-	-
	** 0300003 - Regional Office - III	-	-	6,480	6,480	-	-	-	-
	** 0300004 - Regional Office - IVA	-	-	16,950	16,950	-	-	-	-
	** 0300017 - Regional Office - IVB	-	-	7,776	7,776	-	-	-	-
	** 0300005 - Regional Office - V	-	-	21,870	21,870	-	-	-	-
	** 0300006 - Regional Office - VI	-	-	33,420	33,420	-	-	-	-
	** 0300007 - Regional Office - VII	-	-	6,480	6,480	-	-	-	-
	** 0300008 - Regional Office - VIII	-	-	92,340	92,340	-	-	-	-
	16. Site Development Plan	-	-	100,000	100,000	-	-	-	-
	** 0100000 - Central Office	-	-	100,000	100,000	-	-	-	-
000003030000000	c. MFO 3: REGULATORY AND DEVELOPMENTAL SERVICES FOR PRIVATE SCHOOLS AND NON-DEPED PUBLIC SCHOOLS	-	-	35,769,143	35,769,143	-	-	-	35,769,143
	1. Assistance to Students and teachers in Private Schools and in Non-DepEd Public Schools [Government Assistance to Students and Teachers in Private Education (GASTPE)]	-	-	35,769,143	35,769,143	-	-	-	35,769,143
262003030300000	a. Education Service Contracting (ESC) Program for Private Junior High Schools (per R.A. No. 8545)	-	9,455,566	-	9,455,566	-	9,455,566	-	9,455,566
	** 0100000 - Central Office	-	1,217,949	-	1,217,949	-	1,217,949	-	1,217,949
	** 0300013 - Regional Office - NCR	-	894,696	-	894,696	-	894,696	-	894,696
262003030300001		-	-	-	-	-	-	-	-

DEPARTMENT OF EDUCATION
OFFICE OF THE SECRETARY
SUMMARY OF APPROPRIATIONS BY PIAP UNDER FCR
FY 2017 GAA
(In Thousand Pesos)

UACS	PARTICULARS	APPROPRIATIONS				COMPREHENSIVE RELEASE (ANNEX A)			
		PS	MOOE	CO	TOTAL	PS	MOOE	CO	TOTAL
	** 0300001 - Regional Office - I	-	534,192	-	534,192	-	534,192	-	534,192
	** 0300002 - Regional Office - II	-	343,475	-	343,475	-	343,475	-	343,475
	** 0300014 - Regional Office - CAR	-	258,786	-	258,786	-	258,786	-	258,786
	** 0300003 - Regional Office - III	-	1,162,962	-	1,162,962	-	1,162,962	-	1,162,962
	** 0300004 - Regional Office - IVA	-	1,309,931	-	1,309,931	-	1,309,931	-	1,309,931
	** 0300017 - Regional Office - IVB	-	234,273	-	234,273	-	234,273	-	234,273
	** 0300005 - Regional Office - V	-	488,369	-	488,369	-	488,369	-	488,369
	** 0300006 - Regional Office - VI	-	304,721	-	304,721	-	304,721	-	304,721
	** 0300007 - Regional Office - VII	-	652,614	-	652,614	-	652,614	-	652,614
	** 0300008 - Regional Office - VIII	-	266,943	-	266,943	-	266,943	-	266,943
	** 0300009 - Regional Office - IX	-	217,256	-	217,256	-	217,256	-	217,256
	** 0300010 - Regional Office - X	-	485,192	-	485,192	-	485,192	-	485,192
	** 0300011 - Regional Office - XI	-	414,074	-	414,074	-	414,074	-	414,074
	** 0300012 - Regional Office - XII	-	464,340	-	464,340	-	464,340	-	464,340
	** 0300016 - Regional Office - XIII	-	205,793	-	205,793	-	205,793	-	205,793
262003030300002	b. Voucher Program for Private Senior High Schools (per R.A. No. 10533)	-	23,855,074	-	23,855,074	-	23,855,074	-	23,855,074
	** 0100000 - Central Office	-	1,576,309	-	1,576,309	-	1,576,309	-	1,576,309
	** 0300013 - Regional Office - NCR	-	3,242,619	-	3,242,619	-	3,242,619	-	3,242,619
	** 0300001 - Regional Office - I	-	1,306,312	-	1,306,312	-	1,306,312	-	1,306,312
	** 0300002 - Regional Office - II	-	815,381	-	815,381	-	815,381	-	815,381
	** 0300014 - Regional Office - CAR	-	458,154	-	458,154	-	458,154	-	458,154
	** 0300003 - Regional Office - III	-	2,692,887	-	2,692,887	-	2,692,887	-	2,692,887
	** 0300004 - Regional Office - IVA	-	3,094,257	-	3,094,257	-	3,094,257	-	3,094,257
	** 0300017 - Regional Office - IVB	-	778,368	-	778,368	-	778,368	-	778,368
	** 0300005 - Regional Office - V	-	1,523,970	-	1,523,970	-	1,523,970	-	1,523,970
	** 0300006 - Regional Office - VI	-	1,087,920	-	1,087,920	-	1,087,920	-	1,087,920
	** 0300007 - Regional Office - VII	-	1,588,226	-	1,588,226	-	1,588,226	-	1,588,226
	** 0300008 - Regional Office - VIII	-	1,085,123	-	1,085,123	-	1,085,123	-	1,085,123
	** 0300009 - Regional Office - IX	-	785,276	-	785,276	-	785,276	-	785,276
	** 0300010 - Regional Office - X	-	1,023,855	-	1,023,855	-	1,023,855	-	1,023,855
	** 0300011 - Regional Office - XI	-	1,090,533	-	1,090,533	-	1,090,533	-	1,090,533
	** 0300012 - Regional Office - XII	-	1,068,152	-	1,068,152	-	1,068,152	-	1,068,152
	** 0300016 - Regional Office - XIII	-	637,732	-	637,732	-	637,732	-	637,732
262003030300003	c. Voucher Program for Non-DepEd Public Senior High Schools (per R.A. No. 10533)	-	1,283,465	-	1,283,465	-	1,283,465	-	1,283,465
	** 0100000 - Central Office	-	68,982	-	68,982	-	68,982	-	68,982
	** 0300013 - Regional Office - NCR	-	250,200	-	250,200	-	250,200	-	250,200
	** 0300001 - Regional Office - I	-	179,830	-	179,830	-	179,830	-	179,830
	** 0300002 - Regional Office - II	-	20,195	-	20,195	-	20,195	-	20,195
	** 0300014 - Regional Office - CAR	-	8,558	-	8,558	-	8,558	-	8,558

DEPARTMENT OF EDUCATION
OFFICE OF THE SECRETARY
SUMMARY OF APPROPRIATIONS BY PIAP UNDER FCR
FY 2017 GAA
(In Thousand Pesos)

Annex A

UACS	PARTICULARS	APPROPRIATIONS				COMPREHENSIVE RELEASE (ANNEX A)			
		PS	MOOE	CO	TOTAL	PS	MOOE	CO	TOTAL
	** 0300003 - Regional Office - III	-	228,505	-	228,505	-	228,505	-	228,505
	** 0300004 - Regional Office - IVA	-	13,213	-	13,213	-	13,213	-	13,213
	** 0300017 - Regional Office - IVB	-	50,838	-	50,838	-	50,838	-	50,838
	** 0300005 - Regional Office - V	-	85,470	-	85,470	-	85,470	-	85,470
	** 0300006 - Regional Office - VI	-	57,648	-	57,648	-	57,648	-	57,648
	** 0300007 - Regional Office - VII	-	15,435	-	15,435	-	15,435	-	15,435
	** 0300008 - Regional Office - VIII	-	77,263	-	77,263	-	77,263	-	77,263
	** 0300009 - Regional Office - IX	-	84,550	-	84,550	-	84,550	-	84,550
	** 0300010 - Regional Office - X	-	124,053	-	124,053	-	124,053	-	124,053
	** 0300011 - Regional Office - XI	-	3,115	-	3,115	-	3,115	-	3,115
	** 0300016 - Regional Office - XIII	-	15,610	-	15,610	-	15,610	-	15,610
262003030300004	d. Joint Delivery Voucher for Senior High School Technical Vocational and Livelihood	-	1,175,038	-	1,175,038	-	1,175,038	-	1,175,038
	** 0100000 - Central Office	-	1,175,038	-	1,175,038	-	1,175,038	-	1,175,038
	Sub-Total, Operations	312,566,613	65,003,416	135,291,091	512,861,120	257,493,819	62,428,843	20,355,074	343,261,308
	Total PROGRAM	328,305,798	79,240,225	135,639,591	543,185,614	270,454,943	76,665,652	20,487,074	371,866,802
	GRAND TOTAL	328,305,798	79,240,225	135,639,591	543,185,614	270,454,943	76,665,652	20,487,074	371,866,802

DEPARTMENT OF EDUCATION
OFFICE OF THE SECRETARY
SUMMARY OF FUNDS FOR DIRECT RELEASE TO DEPED CENTRAL OFFICE / REGIONAL OFFICE UNDER FCR
FY 2017 GAA
(In Thousand Pesos)

Annex A-1

UACS	PARTICULARS	SUMMARY OF FUNDS FOR DIRECT RELEASE TO DEPED CO / RO UNDER FCR (ANNEX A-1)			
		PS	MOOE	CO	TOTAL
	From: Department of Education Office of the Secretary				
00000200000000	II. Support To Operations				
269002001000000	Implementation of the Grant of Cash Allowance, Hardship Pay, Equivalent Records Forms (ERF), Conversion to Master Teacher (MT), Reclassification of Positions and Payment of step increments Grant of Cash Allowance ** 0100000 - Central Office		-654,699		-654,699
00000300000000	III. Operations				
000003020000000	MFO 2: BASIC EDUCATION SERVICES				
000003020200000	Co-curricular and special learning support program development				
262003020200008	Implementation of the Redesigned Technical-Vocational High School Program				
	** 0300013 - Regional Office - NCR			-237,000	-237,000
	** 0300001 - Regional Office - I			-524,000	-524,000
	** 0300002 - Regional Office - II			-319,000	-319,000
	** 0300014 - Regional Office - CAR			-157,000	-157,000
	** 0300003 - Regional Office - III			-665,000	-665,000
	** 0300004 - Regional Office - IVA			-599,000	-599,000
	** 0300017 - Regional Office - IVB			-312,000	-312,000
	** 0300005 - Regional Office - V			-708,000	-708,000
	** 0300006 - Regional Office - VI			-379,000	-379,000
	** 0300007 - Regional Office - VII			-593,000	-593,000
	** 0300008 - Regional Office - VIII			-395,000	-395,000
	** 0300009 - Regional Office - IX			-239,000	-239,000
	** 0300010 - Regional Office - X			-401,000	-401,000
	** 0300011 - Regional Office - XI			-379,000	-379,000
	** 0300012 - Regional Office - XII			-415,000	-415,000
	** 0300016 - Regional Office - XIII			-348,000	-348,000
000003020600000	Provision of learning resources				
270003020600001	Textbooks/Instructional Materials (including P100M for Children with special needs)				
	** 0300013 - Regional Office - NCR		-42,832		-42,832
	** 0300001 - Regional Office - I		-129,379		-129,379
	** 0300002 - Regional Office - II		-88,730		-88,730
	** 0300003 - Regional Office - III		-272,155		-272,155
	** 0300004 - Regional Office - IVA		-329,436		-329,436
	** 0300017 - Regional Office - IVB		-92,491		-92,491
	** 0300005 - Regional Office - V		-187,492		-187,492
	** 0300006 - Regional Office - VI		-116,289		-116,289
	** 0300007 - Regional Office - VII		-162,247		-162,247
	** 0300008 - Regional Office - VIII		-139,834		-139,834
	** 0300009 - Regional Office - IX		-106,967		-106,967
	** 0300010 - Regional Office - X		-123,576		-123,576
	** 0300011 - Regional Office - XI		-130,297		-130,297
	** 0300012 - Regional Office - XII		-124,072		-124,072
	** 0300016 - Regional Office - XIII		-80,733		-80,733
270003020600002	Science and Mathematics Equipment				
	** 0300013 - Regional Office - NCR			-265,133	-265,133
	** 0300001 - Regional Office - I			-342,826	-342,826
	** 0300002 - Regional Office - II			-250,759	-250,759
	** 0300014 - Regional Office - CAR			-143,797	-143,797
	** 0300003 - Regional Office - III			-394,220	-394,220
	** 0300004 - Regional Office - IVA			-385,651	-385,651
	** 0300017 - Regional Office - IVB			-198,879	-198,879
	** 0300005 - Regional Office - V			-387,069	-387,069
	** 0300006 - Regional Office - VI			-229,587	-229,587
	** 0300007 - Regional Office - VII			-318,078	-318,078
	** 0300008 - Regional Office - VIII			-310,060	-310,060
	** 0300009 - Regional Office - IX			-140,127	-140,127
	** 0300010 - Regional Office - X			-192,982	-192,982
	** 0300011 - Regional Office - XI			-205,045	-205,045
	** 0300012 - Regional Office - XII			-185,351	-185,351
	** 0300016 - Regional Office - XIII			-245,204	-245,204
270003020600003	Department of Education Computerization Program				
	** 0300013 - Regional Office - NCR			-62,140	-62,140
	** 0300001 - Regional Office - I			-260,089	-260,089
	** 0300002 - Regional Office - II			-269,388	-269,388

DEPARTMENT OF EDUCATION
OFFICE OF THE SECRETARY
SUMMARY OF FUNDS FOR DIRECT RELEASE TO DEPED CENTRAL OFFICE / REGIONAL OFFICE UNDER FCR
FY 2017 GAA
(In Thousand Pesos)

Annex A-1

UACS	PARTICULARS	SUMMARY OF FUNDS FOR DIRECT RELEASE TO DEPED CO / RO UNDER FCR (ANNEX A-1)			
		PS	MOOE	CO	TOTAL
	** 0300014 - Regional Office - CAR			-270,417	-270,417
	** 0300003 - Regional Office - III			-336,303	-336,303
	** 0300004 - Regional Office - IVA			-332,265	-332,265
	** 0300017 - Regional Office - IVB			-323,138	-323,138
	** 0300005 - Regional Office - V			-417,445	-417,445
	** 0300006 - Regional Office - VI			-237,886	-237,886
	** 0300007 - Regional Office - VII			-273,053	-273,053
	** 0300008 - Regional Office - VIII			-603,514	-603,514
	** 0300009 - Regional Office - IX			-266,642	-266,642
	** 0300010 - Regional Office - X			-306,426	-306,426
	** 0300011 - Regional Office - XI			-253,103	-253,103
	** 0300012 - Regional Office - XII			-276,779	-276,779
	** 0300016 - Regional Office - XIII			-272,547	-272,547
26800302070000	Provision and maintenance of Basic Education Facilities				
	** 0300013 - Regional Office - NCR			-138,015	-138,015
	** 0300001 - Regional Office - I			-63,079	-63,079
	** 0300002 - Regional Office - II			-186,242	-186,242
	** 0300014 - Regional Office - CAR			-112,544	-112,544
	** 0300003 - Regional Office - III			-130,058	-130,058
	** 0300004 - Regional Office - IVA			-479,329	-479,329
	** 0300017 - Regional Office - IVB			-135,038	-135,038
	** 0300005 - Regional Office - V			-281,857	-281,857
	** 0300006 - Regional Office - VI			-376,378	-376,378
	** 0300007 - Regional Office - VII			-243,625	-243,625
	** 0300008 - Regional Office - VIII			-195,819	-195,819
	** 0300009 - Regional Office - IX			-174,419	-174,419
	** 0300010 - Regional Office - X			-75,197	-75,197
	** 0300011 - Regional Office - XI			-125,943	-125,943
	** 0300012 - Regional Office - XII			-161,777	-161,777
	** 0300016 - Regional Office - XIII			-104,252	-104,252
	Repair and/or Rehabilitation of School Buildings and Wat-San Facilities				
	** 0300013 - Regional Office - NCR			-138,015	-138,015
	** 0300001 - Regional Office - I			-63,079	-63,079
	** 0300002 - Regional Office - II			-186,242	-186,242
	** 0300014 - Regional Office - CAR			-112,544	-112,544
	** 0300003 - Regional Office - III			-130,058	-130,058
	** 0300004 - Regional Office - IVA			-479,329	-479,329
	** 0300017 - Regional Office - IVB			-135,038	-135,038
	** 0300005 - Regional Office - V			-281,857	-281,857
	** 0300006 - Regional Office - VI			-376,378	-376,378
	** 0300007 - Regional Office - VII			-243,625	-243,625
	** 0300008 - Regional Office - VIII			-195,819	-195,819
	** 0300009 - Regional Office - IX			-174,419	-174,419
	** 0300010 - Regional Office - X			-75,197	-75,197
	** 0300011 - Regional Office - XI			-125,943	-125,943
	** 0300012 - Regional Office - XII			-161,777	-161,777
	** 0300016 - Regional Office - XIII			-104,252	-104,252
00000303000000	MFO 3: REGULATORY AND DEVELOPMENTAL SERVICES FOR PRIVATE SCHOOLS				
262003030300000	Assistance to Students and teachers in Private Schools and in Non-DepEd Public Schools [Government Assistance to Students and Teachers in Private Education (GASTPE)]				
262003030300001	Education Service Contracting (ESC) Program for Private Junior High Schools (per R.A. No. 8545)				
	** 0300013 - Regional Office - NCR		-894,696		-894,696
	** 0300001 - Regional Office - I		-534,192		-534,192
	** 0300002 - Regional Office - II		-343,475		-343,475
	** 0300014 - Regional Office - CAR		-258,786		-258,786
	** 0300003 - Regional Office - III		-1,162,962		-1,162,962
	** 0300004 - Regional Office - IVA		-1,309,931		-1,309,931
	** 0300017 - Regional Office - IVB		-234,273		-234,273
	** 0300005 - Regional Office - V		-488,369		-488,369
	** 0300006 - Regional Office - VI		-304,721		-304,721
	** 0300007 - Regional Office - VII		-652,614		-652,614
	** 0300008 - Regional Office - VIII		-266,943		-266,943
	** 0300009 - Regional Office - IX		-217,256		-217,256
	** 0300010 - Regional Office - X		-485,192		-485,192
	** 0300011 - Regional Office - XI		-414,074		-414,074
	** 0300012 - Regional Office - XII		-464,340		-464,340
	** 0300016 - Regional Office - XIII		-205,793		-205,793
262003030300002	Voucher Program for Private Senior High Schools (per R.A. No. 10533)				
	** 0300013 - Regional Office - NCR		-3,242,619		-3,242,619

DEPARTMENT OF EDUCATION
OFFICE OF THE SECRETARY
SUMMARY OF FUNDS FOR DIRECT RELEASE TO DEPED CENTRAL OFFICE / REGIONAL OFFICE UNDER FCR
FY 2017 GAA
(In Thousand Pesos)

Annex A-1

UACS	PARTICULARS	SUMMARY OF FUNDS FOR DIRECT RELEASE TO DEPED CO / RO UNDER FCR (ANNEX A-1)			
		PS	MOOE	CO	TOTAL
	** 0300001 - Regional Office - I		-1,306,312		-1,306,312
	** 0300002 - Regional Office - II		-815,381		-815,381
	** 0300014 - Regional Office - CAR		-458,154		-458,154
	** 0300003 - Regional Office - III		-2,692,887		-2,692,887
	** 0300004 - Regional Office - IVA		-3,094,257		-3,094,257
	** 0300017 - Regional Office - IVB		-778,368		-778,368
	** 0300005 - Regional Office - V		-1,523,970		-1,523,970
	** 0300006 - Regional Office - VI		-1,087,920		-1,087,920
	** 0300007 - Regional Office - VII		-1,588,226		-1,588,226
	** 0300008 - Regional Office - VIII		-1,085,123		-1,085,123
	** 0300009 - Regional Office - IX		-785,276		-785,276
	** 0300010 - Regional Office - X		-1,023,855		-1,023,855
	** 0300011 - Regional Office - XI		-1,090,533		-1,090,533
	** 0300012 - Regional Office - XII		-1,068,152		-1,068,152
	** 0300016 - Regional Office - XIII		-637,732		-637,732
262003030300003	Voucher Program for Non-DepEd Public Senior High Schools (per R.A. No. 10533)				
	** 0300013 - Regional Office - NCR		-250,200		-250,200
	** 0300001 - Regional Office - I		-179,830		-179,830
	** 0300002 - Regional Office - II		-20,195		-20,195
	** 0300014 - Regional Office - CAR		-8,558		-8,558
	** 0300003 - Regional Office - III		-228,505		-228,505
	** 0300004 - Regional Office - IVA		-13,213		-13,213
	** 0300017 - Regional Office - IVB		-50,838		-50,838
	** 0300005 - Regional Office - V		-85,470		-85,470
	** 0300006 - Regional Office - VI		-57,648		-57,648
	** 0300007 - Regional Office - VII		-15,435		-15,435
	** 0300008 - Regional Office - VIII		-77,263		-77,263
	** 0300009 - Regional Office - IX		-84,550		-84,550
	** 0300010 - Regional Office - X		-124,053		-124,053
	** 0300011 - Regional Office - XI		-3,115		-3,115
	** 0300016 - Regional Office - XIII		-15,610		-15,610
	To:				
	Department of Education				
	Office of the Secretary				
000002000000000	II. Support To Operations				
	Implementation of the Grant of Cash Allowance, Hardship Pay, Equivalent Records Forms (ERF), Conversion to Master Teacher (MT), Reclassification of Positions and Payment of step increments				
	Grant of Cash Allowance				
	** 0300013 - Regional Office - NCR		64,815		64,815
	** 0300001 - Regional Office - I		36,936		36,936
	** 0300002 - Regional Office - II		25,950		25,950
	** 0300014 - Regional Office - CAR		13,742		13,742
	** 0300003 - Regional Office - III		67,190		67,190
	** 0300004 - Regional Office - IVA		77,254		77,254
	** 0300017 - Regional Office - IVB		24,749		24,749
	** 0300005 - Regional Office - V		49,926		49,926
	** 0300006 - Regional Office - VI		56,708		56,708
	** 0300007 - Regional Office - VII		52,150		52,150
	** 0300008 - Regional Office - VIII		39,934		39,934
	** 0300009 - Regional Office - IX		29,050		29,050
	** 0300010 - Regional Office - X		31,782		31,782
	** 0300011 - Regional Office - XI		31,726		31,726
	** 0300012 - Regional Office - XII		30,789		30,789
	** 0300016 - Regional Office - XIII		21,998		21,998
000003000000000	III. Operations				
000003020000000	MFO 2: BASIC EDUCATION SERVICES				
000003020200000	Co-curricular and special learning support program development				
262003020200008	Implementation of the Redesigned Technical-Vocational High School Program				
	** 0100000 - Central Office			6,670,000	6,670,000
000003020600000	Provision of learning resources				
270003020600001	Textbooks/Instructional Materials (including P100M for Children with special needs)				
	** 0100000 - Central Office		2,215,698		2,215,698
270003020600002	Science and Mathematics Equipment				
	** 0100000 - Central Office			4,194,768	4,194,768
270003020600003	Department of Education Computerization Program				
	** 0100000 - Central Office			4,761,135	4,761,135

DEPARTMENT OF EDUCATION
OFFICE OF THE SECRETARY
SUMMARY OF FUNDS FOR DIRECT RELEASE TO DEPED CENTRAL OFFICE / REGIONAL OFFICE UNDER FCR
FY 2017 GAA
(In Thousand Pesos)

Annex A-1

UACS	PARTICULARS	SUMMARY OF FUNDS FOR DIRECT RELEASE TO DEPED CO / RO UNDER FCR (ANNEX A-1)			
		PS	MOOE	CO	TOTAL
268003020700000	Provision and maintenance of Basic Education Facilities ** 0100000 - Central Office			2,983,572	2,983,572
	Repair and/or Rehabilitation of School Buildings and Wat-San Facilities ** 0100000 - Central Office			2,983,572	2,983,572
000003030000000	MFO 3: REGULATORY AND DEVELOPMENTAL SERVICES FOR PRIVATE SCHOOLS AND NON-DEPED PUBLIC SCHOOLS				
262003030300000	Assistance to Students and teachers in Private Schools and in Non-DepEd Public Schools [Government Assistance to Students and Teachers in Private Education (GASTPE)]				
262003030300001	Education Service Contracting (ESC) Program for Private Junior High Schools (per R.A. No. 8545) ** 0100000 - Central Office		8,237,617		8,237,617
262003030300002	Voucher Program for Private Senior High Schools (per R.A. No. 10533) ** 0100000 - Central Office		22,278,765		22,278,765
262003030300003	Voucher Program for Non-DepEd Public Senior High Schools (per R.A. No. 10533) ** 0100000 - Central Office		1,214,483		1,214,483
	GRAND TOTAL	0	0	0	0

DEPARTMENT OF EDUCATION
OFFICE OF THE SECRETARY
SUMMARY OF APPROPRIATIONS BY P/A/P UNDER FLR
FY 2017 GAA
(In Thousand Pesos)

Annex B

UACS	PARTICULARS	FOR LATER RELEASE (ANNEX B)			
		PS	MOOE	CO	TOTAL
	AGENCY SPECIFIC BUDGET	56,791,794	2,574,573	112,052,445	171,570,312
000001000000000	I. General Administration and Support	1,719,000	-	-	1,870,500
103001000100000	a. General Management and Supervision				
	** 0100000 - Central Offices	-	-	151,500	151,500
103001000200000	Administration of Personnel Benefits	1,719,000	-	-	1,719,000
	** 0100000 - Central Office	1,719,000	-	-	1,719,000
000002000000000	II. Support To Operations	-	-	65,000	65,000
268002000900000	i. Acquisition, Improvements, Survey and Titling of School Sites				
	** 0100000 - Central Office	-	-	65,000	65,000
000003000000000	III. Operations	55,072,794	2,574,573	112,052,445	169,699,812
000003020000000	MFO 2: BASIC EDUCATION SERVICES	55,072,794	2,574,573	112,052,445	169,699,812
270003020400000	5. Implementation of Alternative Learning and Delivery Mode Programs, including				
	** 0100000 - Central Office	-	-	100,000	100,000
000003020500000	Operations of Schools	55,072,794	-	-	55,072,794
262003020500004	Creation and Filling up of Positions	55,072,794	-	-	55,072,794
	** 0100000 - Central Office	2,924,912	-	-	2,924,912
	** 0300013 - Regional Office - NCR	4,151,560	-	-	4,151,560
	** 0300001 - Regional Office - I	2,927,013	-	-	2,927,013
	** 0300002 - Regional Office - II	1,921,375	-	-	1,921,375
	** 0300014 - Regional Office - CAR	813,639	-	-	813,639
	** 0300003 - Regional Office - III	5,211,297	-	-	5,211,297
	** 0300004 - Regional Office - IVA	6,842,521	-	-	6,842,521
	** 0300017 - Regional Office - IVB	2,849,404	-	-	2,849,404
	** 0300005 - Regional Office - V	4,103,501	-	-	4,103,501
	** 0300006 - Regional Office - VI	3,593,182	-	-	3,593,182
	** 0300007 - Regional Office - VII	4,519,469	-	-	4,519,469
	** 0300008 - Regional Office - VIII	3,420,616	-	-	3,420,616
	** 0300009 - Regional Office - IX	2,112,785	-	-	2,112,785
	** 0300010 - Regional Office - X	2,710,171	-	-	2,710,171
	** 0300011 - Regional Office - XI	2,689,626	-	-	2,689,626
	** 0300012 - Regional Office - XII	2,383,764	-	-	2,383,764
	** 0300016 - Regional Office - XIII	1,897,959	-	-	1,897,959
268003020700000	Provision and maintenance of Basic Education Facilities	-	2,474,573	111,652,445	114,127,018
	** 0100000 - Central Office	-	1,568,413	31,458,107	33,026,520
	** 0300013 - Regional Office - NCR	-	72,202	5,474,295	5,546,497
	** 0300001 - Regional Office - I	-	55,779	5,434,371	5,490,150
	** 0300002 - Regional Office - II	-	26,014	2,666,428	2,692,442
	** 0300014 - Regional Office - CAR	-	15,328	1,638,281	1,653,609
	** 0300003 - Regional Office - III	-	100,592	8,216,252	8,316,844
	** 0300004 - Regional Office - IVA	-	168,407	12,209,901	12,378,308
	** 0300017 - Regional Office - IVB	-	36,417	3,052,457	3,088,874
	** 0300005 - Regional Office - V	-	76,078	8,462,273	8,538,351
	** 0300006 - Regional Office - VI	-	62,198	4,443,312	4,505,510
	** 0300007 - Regional Office - VII	-	73,136	7,757,750	7,830,886
	** 0300008 - Regional Office - VIII	-	56,356	5,399,996	5,456,352
	** 0300009 - Regional Office - IX	-	21,637	1,866,326	1,887,963
	** 0300010 - Regional Office - X	-	47,367	4,396,463	4,443,830
	** 0300011 - Regional Office - XI	-	45,557	3,815,722	3,861,279
	** 0300012 - Regional Office - XII	-	25,598	2,325,233	2,350,831
	** 0300016 - Regional Office - XIII	-	23,494	3,035,278	3,058,772
	Repair and/or Rehabilitation of School Buildings and Wat-San Facilities	-	-	2,010,753	2,010,753
	** 0100000 - Central Office	-	-	391,265	391,265
	** 0300013 - Regional Office - NCR	-	-	23,195	23,195
	** 0300001 - Regional Office - I	-	-	248,071	248,071
	** 0300002 - Regional Office - II	-	-	62,678	62,678
	** 0300014 - Regional Office - CAR	-	-	45,481	45,481
	** 0300003 - Regional Office - III	-	-	401,102	401,102
	** 0300004 - Regional Office - IVA	-	-	215,001	215,001
	** 0300017 - Regional Office - IVB	-	-	115,107	115,107
	** 0300005 - Regional Office - V	-	-	35,173	35,173
	** 0300006 - Regional Office - VI	-	-	35,712	35,712

DEPARTMENT OF EDUCATION
OFFICE OF THE SECRETARY
SUMMARY OF APPROPRIATIONS BY PIA/P UNDER FLR
FY 2017 GAA
(In Thousand Pesos)

Annex B

UACS	PARTICULARS	FOR LATER RELEASE (ANNEX B)			
		PS	MOOE	CO	TOTAL
	** 0300007 - Regional Office - VII	-	-	5,050	5,050
	** 0300008 - Regional Office - VIII	-	-	36,196	36,196
	** 0300009 - Regional Office - IX	-	-	16,926	16,926
	** 0300010 - Regional Office - X	-	-	147,263	147,263
	** 0300011 - Regional Office - XI	-	-	106,072	106,072
	** 0300012 - Regional Office - XII	-	-	68,033	68,033
	** 0300016 - Regional Office - XIII	-	-	58,428	58,428
	Acquisition of School Desks, Furniture and Fixtures	-	2,474,573	-	2,474,573
	** 0100000 - Central Office	-	1,568,413	-	1,568,413
	** 0300013 - Regional Office - NCR	-	72,202	-	72,202
	** 0300001 - Regional Office - I	-	55,779	-	55,779
	** 0300002 - Regional Office - II	-	26,014	-	26,014
	** 0300014 - Regional Office - CAR	-	15,328	-	15,328
	** 0300003 - Regional Office - III	-	100,592	-	100,592
	** 0300004 - Regional Office - IVA	-	168,407	-	168,407
	** 0300017 - Regional Office - IVB	-	36,417	-	36,417
	** 0300005 - Regional Office - V	-	76,078	-	76,078
	** 0300006 - Regional Office - VI	-	62,198	-	62,198
	** 0300007 - Regional Office - VII	-	73,136	-	73,136
	** 0300008 - Regional Office - VIII	-	56,356	-	56,356
	** 0300009 - Regional Office - IX	-	21,637	-	21,637
	** 0300010 - Regional Office - X	-	47,367	-	47,367
	** 0300011 - Regional Office - XI	-	45,557	-	45,557
	** 0300012 - Regional Office - XII	-	25,598	-	25,598
	** 0300016 - Regional Office - XIII	-	23,494	-	23,494
	New Construction of Classrooms and Wat-San Facilities	-	-	65,408,555	65,408,555
	** 0100000 - Central Office	-	-	27,466,205	27,466,205
	** 0300013 - Regional Office - NCR	-	-	3,296,100	3,296,100
	** 0300001 - Regional Office - I	-	-	2,173,800	2,173,800
	** 0300002 - Regional Office - II	-	-	981,250	981,250
	** 0300014 - Regional Office - CAR	-	-	570,300	570,300
	** 0300003 - Regional Office - III	-	-	4,217,650	4,217,650
	** 0300004 - Regional Office - IVA	-	-	7,539,900	7,539,900
	** 0300017 - Regional Office - IVB	-	-	1,532,350	1,532,350
	** 0300005 - Regional Office - V	-	-	3,097,100	3,097,100
	** 0300006 - Regional Office - VI	-	-	2,472,600	2,472,600
	** 0300007 - Regional Office - VII	-	-	3,097,700	3,097,700
	** 0300008 - Regional Office - VIII	-	-	2,423,800	2,423,800
	** 0300009 - Regional Office - IX	-	-	881,900	881,900
	** 0300010 - Regional Office - X	-	-	1,924,200	1,924,200
	** 0300011 - Regional Office - XI	-	-	1,799,650	1,799,650
	** 0300012 - Regional Office - XII	-	-	989,700	989,700
	** 0300016 - Regional Office - XIII	-	-	944,350	944,350
	Technical - Vocational Laboratories	-	-	43,905,000	43,905,000
	** 0100000 - Central Office	-	-	3,272,500	3,272,500
	** 0300013 - Regional Office - NCR	-	-	2,155,000	2,155,000
	** 0300001 - Regional Office - I	-	-	3,012,500	3,012,500
	** 0300002 - Regional Office - II	-	-	1,622,500	1,622,500
	** 0300014 - Regional Office - CAR	-	-	1,022,500	1,022,500
	** 0300003 - Regional Office - III	-	-	3,597,500	3,597,500
	** 0300004 - Regional Office - IVA	-	-	4,455,000	4,455,000
	** 0300017 - Regional Office - IVB	-	-	1,405,000	1,405,000
	** 0300005 - Regional Office - V	-	-	5,330,000	5,330,000
	** 0300006 - Regional Office - VI	-	-	1,935,000	1,935,000
	** 0300007 - Regional Office - VII	-	-	4,655,000	4,655,000
	** 0300008 - Regional Office - VIII	-	-	2,940,000	2,940,000
	** 0300009 - Regional Office - IX	-	-	967,500	967,500
	** 0300010 - Regional Office - X	-	-	2,325,000	2,325,000
	** 0300011 - Regional Office - XI	-	-	1,910,000	1,910,000
	** 0300012 - Regional Office - XII	-	-	1,267,500	1,267,500
	** 0300016 - Regional Office - XIII	-	-	2,032,500	2,032,500
	Electrification of On-Grid Schools	-	-	328,137	328,137
	** 0100000 - Central Office	-	-	328,137	328,137
242003021500000	Conservation and restoration of Gabaldon and other heritage school buildings	-	-	300,000	300,000
	** 0100000 - Central Office	-	-	64	64
	** 0300013 - Regional Office - NCR	-	-	37,360	37,360
	** 0300001 - Regional Office - I	-	-	48,100	48,100
	** 0300002 - Regional Office - II	-	-	29,160	29,160

DEPARTMENT OF EDUCATION
OFFICE OF THE SECRETARY
SUMMARY OF APPROPRIATIONS BY P/A/P UNDER FLR
FY 2017 GAA
(In Thousand Pesos)

Annex B

UACS	PARTICULARS	FOR LATER RELEASE (ANNEX B)			
		PS	MOOE	CO	TOTAL
	** 0300003 - Regional Office - III	-	-	6,480	6,480
	** 0300004 - Regional Office - IVA	-	-	16,950	16,950
	** 0300017 - Regional Office - IVB	-	-	7,776	7,776
	** 0300005 - Regional Office - V	-	-	21,870	21,870
	** 0300006 - Regional Office - VI	-	-	33,420	33,420
	** 0300007 - Regional Office - VII	-	-	6,480	6,480
	** 0300008 - Regional Office - VIII	-	-	92,340	92,340
	Site Development Plan	-	100,000	-	100,000
	** 0100000 - Central Office	-	100,000	-	100,000
	GRAND TOTAL	56,791,794	2,574,573	112,117,445	171,635,312

DEPARTMENT OF EDUCATION
OFFICE OF THE SECRETARY
SUMMARY OF FUNDS FOR DIRECT RELEASE TO DEPED CENTRAL OFFICE / OTHER AGENCY UNDER FLR
FY 2017 GAA
(In Thousand Pesos)

Annex B-1

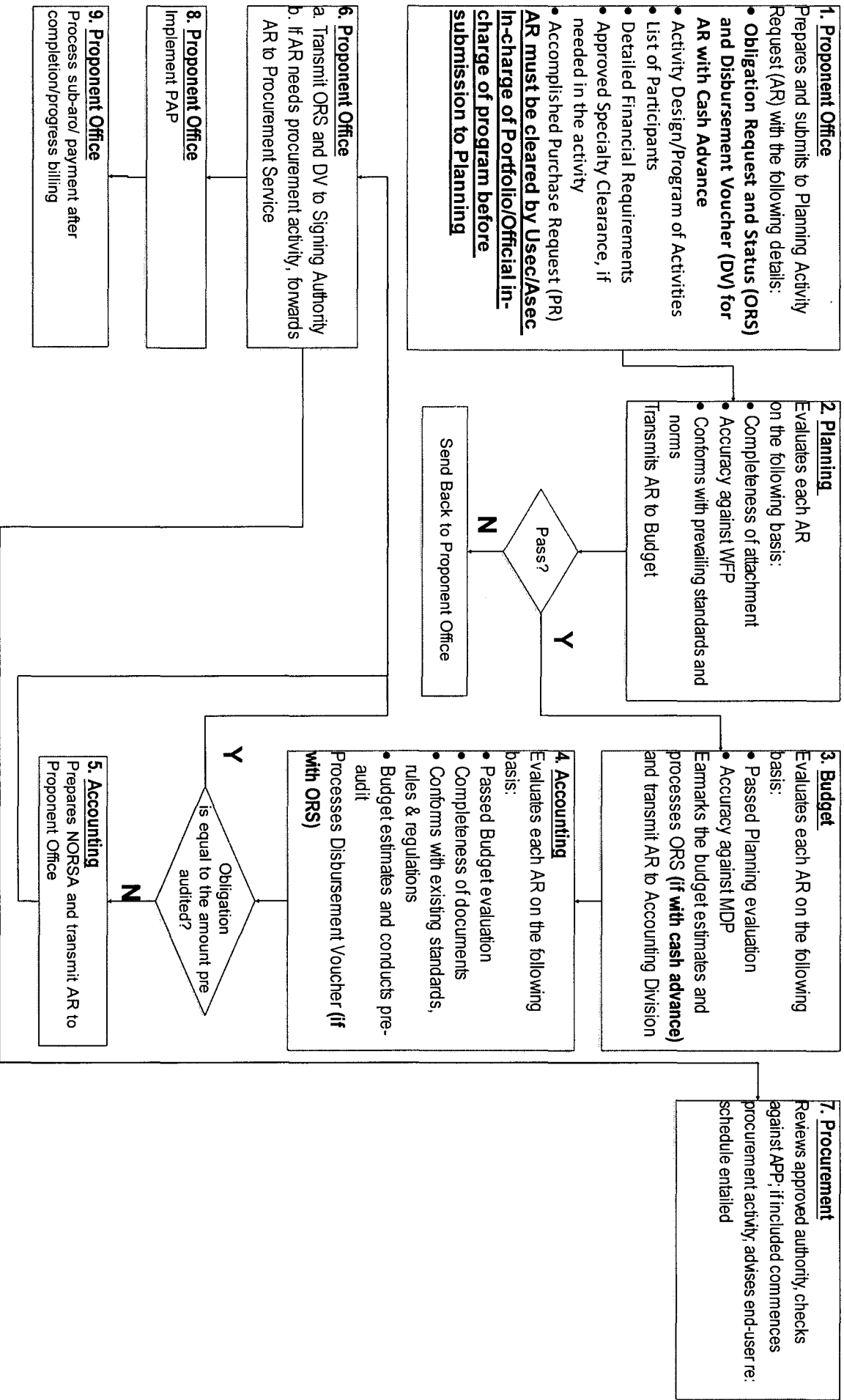
UACS	PARTICULARS	SUMMARY OF FUNDS FOR DIRECT RELEASE TO DEPED CENTRAL OFFICE / OTHER AGENCY UNDER FLR (ANNEX B-1)			
		PS	MOOE	CO	TOTAL
	From: Department of Education Office of the Secretary				
000003000000000	iii. Operations				
000003020000000	MFO 2: BASIC EDUCATION SERVICES				
268003020700000	Provision and maintenance of Basic Education Facilities				
	** 0100000 - Central Office		0	-30,738,705	-30,738,705
	** 0300013 - Regional Office - NCR	-72,202	-5,474,295		-5,546,497
	** 0300001 - Regional Office - I	-55,779	-5,434,371		-5,490,150
	** 0300002 - Regional Office - II	-26,014	-2,666,428		-2,692,442
	** 0300014 - Regional Office - CAR	-15,328	-1,638,281		-1,653,609
	** 0300003 - Regional Office - III	-100,592	-8,216,252		-8,316,844
	** 0300004 - Regional Office - IVA	-168,407	-12,209,901		-12,378,308
	** 0300017 - Regional Office - IVB	-36,417	-3,052,457		-3,088,874
	** 0300005 - Regional Office - V	-76,078	-8,462,273		-8,538,351
	** 0300006 - Regional Office - VI	-62,198	-4,443,312		-4,505,510
	** 0300007 - Regional Office - VII	-73,136	-7,757,750		-7,830,886
	** 0300008 - Regional Office - VIII	-56,356	-5,399,996		-5,456,352
	** 0300009 - Regional Office - IX	-21,637	-1,866,326		-1,887,963
	** 0300010 - Regional Office - X	-47,367	-4,396,463		-4,443,830
	** 0300011 - Regional Office - XI	-45,557	-3,815,722		-3,861,279
	** 0300012 - Regional Office - XII	-25,598	-2,325,233		-2,350,831
	** 0300016 - Regional Office - XIII	-23,494	-3,035,278		-3,058,772
	Repair and/or Rehabilitation of School Buildings and Wat-San Facilities				
	** 0300013 - Regional Office - NCR			-23,195	-23,195
	** 0300001 - Regional Office - I			-248,071	-248,071
	** 0300002 - Regional Office - II			-62,678	-62,678
	** 0300014 - Regional Office - CAR			-45,481	-45,481
	** 0300003 - Regional Office - III			-401,102	-401,102
	** 0300004 - Regional Office - IVA			-215,001	-215,001
	** 0300017 - Regional Office - IVB			-115,107	-115,107
	** 0300005 - Regional Office - V			-35,173	-35,173
	** 0300006 - Regional Office - VI			-35,712	-35,712
	** 0300007 - Regional Office - VII			-5,050	-5,050
	** 0300008 - Regional Office - VIII			-36,196	-36,196
	** 0300009 - Regional Office - IX			-16,926	-16,926
	** 0300010 - Regional Office - X			-147,263	-147,263
	** 0300011 - Regional Office - XI			-106,072	-106,072
	** 0300012 - Regional Office - XII			-68,033	-68,033
	** 0300016 - Regional Office - XIII			-58,428	-58,428
	Acquisition of School Desks, Furniture and Fixtures				
	** 0300013 - Regional Office - NCR	-72,202			-72,202
	** 0300001 - Regional Office - I	-55,779			-55,779
	** 0300002 - Regional Office - II	-26,014			-26,014
	** 0300014 - Regional Office - CAR	-15,328			-15,328
	** 0300003 - Regional Office - III	-100,592			-100,592
	** 0300004 - Regional Office - IVA	-168,407			-168,407
	** 0300017 - Regional Office - IVB	-36,417			-36,417
	** 0300005 - Regional Office - V	-76,078			-76,078
	** 0300006 - Regional Office - VI	-62,198			-62,198
	** 0300007 - Regional Office - VII	-73,136			-73,136
	** 0300008 - Regional Office - VIII	-56,356			-56,356
	** 0300009 - Regional Office - IX	-21,637			-21,637
	** 0300010 - Regional Office - X	-47,367			-47,367
	** 0300011 - Regional Office - XI	-45,557			-45,557
	** 0300012 - Regional Office - XII	-25,598			-25,598
	** 0300016 - Regional Office - XIII	-23,494			-23,494
	New Construction of Classrooms and Wat-San Facilities				
	** 0100000 - Central Office			-27,466,205	-27,466,205
	** 0300013 - Regional Office - NCR			-3,296,100	-3,296,100
	** 0300001 - Regional Office - I			-2,173,800	-2,173,800
	** 0300002 - Regional Office - II			-981,250	-981,250
	** 0300014 - Regional Office - CAR			-570,300	-570,300
	** 0300003 - Regional Office - III			-4,217,650	-4,217,650
	** 0300004 - Regional Office - IVA			-7,539,900	-7,539,900
	** 0300017 - Regional Office - IVB			-1,532,350	-1,532,350
	** 0300005 - Regional Office - V			-3,097,100	-3,097,100
	** 0300006 - Regional Office - VI			-2,472,600	-2,472,600
	** 0300007 - Regional Office - VII			-3,097,700	-3,097,700
	** 0300008 - Regional Office - VIII			-2,423,800	-2,423,800

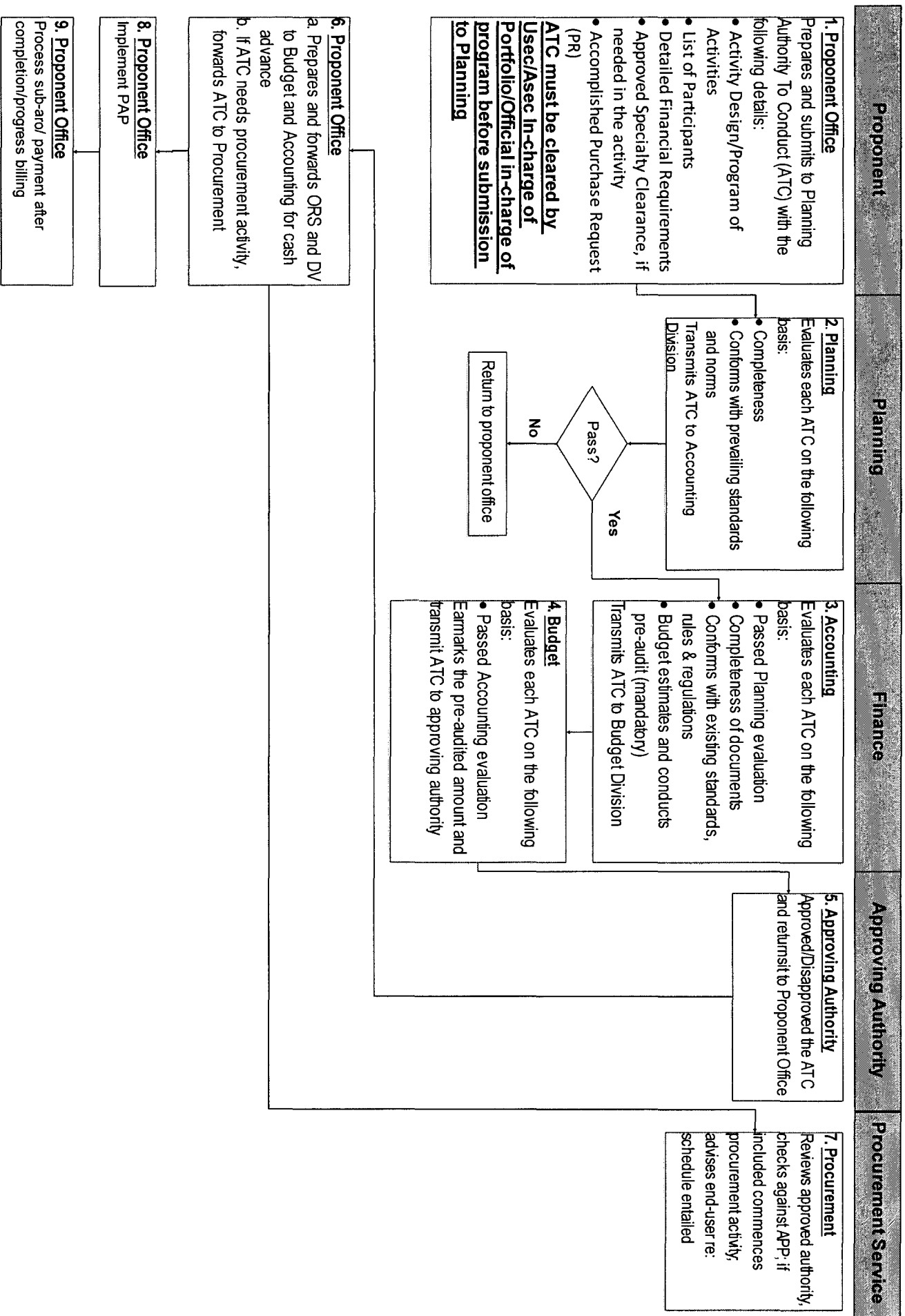
DEPARTMENT OF EDUCATION
OFFICE OF THE SECRETARY
SUMMARY OF FUNDS FOR DIRECT RELEASE TO DEPED CENTRAL OFFICE / OTHER AGENCY UNDER FLR
FY 2017 GAA
(In Thousand Pesos)

Annex B-1

UACS	PARTICULARS	SUMMARY OF FUNDS FOR DIRECT RELEASE TO DEPED CENTRAL OFFICE / OTHER AGENCY UNDER FLR (ANNEX B-1)			
		PS	MOOE	CO	TOTAL
	** 0300009 - Regional Office - IX			-881,900	-881,900
	** 0300010 - Regional Office - X			-1,924,200	-1,924,200
	** 0300011 - Regional Office - XI			-1,799,650	-1,799,650
	** 0300012 - Regional Office - XII			-989,700	-989,700
	** 0300016 - Regional Office - XIII			-944,350	-944,350
	Technical - Vocational Laboratories				
	** 0100000 - Central Office			-3,272,500	-3,272,500
	** 0300013 - Regional Office - NCR			-2,155,000	-2,155,000
	** 0300001 - Regional Office - I			-3,012,500	-3,012,500
	** 0300002 - Regional Office - II			-1,622,500	-1,622,500
	** 0300014 - Regional Office - CAR			-1,022,500	-1,022,500
	** 0300003 - Regional Office - III			-3,597,500	-3,597,500
	** 0300004 - Regional Office - IVA			-4,455,000	-4,455,000
	** 0300017 - Regional Office - IVB			-1,405,000	-1,405,000
	** 0300005 - Regional Office - V			-5,330,000	-5,330,000
	** 0300006 - Regional Office - VI			-1,935,000	-1,935,000
	** 0300007 - Regional Office - VII			-4,655,000	-4,655,000
	** 0300008 - Regional Office - VIII			-2,940,000	-2,940,000
	** 0300009 - Regional Office - IX			-967,500	-967,500
	** 0300010 - Regional Office - X			-2,325,000	-2,325,000
	** 0300011 - Regional Office - XI			-1,910,000	-1,910,000
	** 0300012 - Regional Office - XII			-1,267,500	-1,267,500
	** 0300016 - Regional Office - XIII			-2,032,500	-2,032,500
242003021500000	Conservation and restoration of Gabaldon and other heritage school buildings				
	** 0300013 - Regional Office - NCR			-37,360	-37,360
	** 0300001 - Regional Office - I			-48,100	-48,100
	** 0300002 - Regional Office - II			-29,160	-29,160
	** 0300003 - Regional Office - III			-6,480	-6,480
	** 0300004 - Regional Office - IVA			-16,950	-16,950
	** 0300017 - Regional Office - IVB			-7,776	-7,776
	** 0300005 - Regional Office - V			-21,870	-21,870
	** 0300006 - Regional Office - VI			-33,420	-33,420
	** 0300007 - Regional Office - VII			-6,480	-6,480
	** 0300008 - Regional Office - VIII			-92,340	-92,340
	To: Department of Education Office of the Secretary				
000003000000000	iii. Operations				
000003020000000	MFO 2: BASIC EDUCATION SERVICES				
	Provision and maintenance of Basic Education Facilities				
	** 0100000 - Central Office		906,160	1,619,488	2,525,648
	Repair and/or Rehabilitation of School Buildings and Wat-San Facilities				
	** 0100000 - Central Office			1,619,488	1,619,488
	Acquisition of School Desks, Furniture and Fixtures				
	** 0100000 - Central Office		906,160		906,160
242003021500000	Conservation and restoration of Gabaldon and other heritage school buildings				
	** 0100000 - Central Office			299,936	299,936
	To: Department of Public Works and Highways (DPWH) Office of the Secretary				
268003020700000	Provision and maintenance of Basic Education Facilities				
	** 0100000 - Central Office			109,313,555	109,313,555
	New Construction of Classrooms and Wat-San Facilities				
	** 0100000 - Central Office			65,408,555	65,408,555
	Technical - Vocational Laboratories				
	** 0100000 - Central Office			43,905,000	43,905,000
	GRAND TOTAL	0	0	0	0

Activity Request (AR) Process Flow, CO





Activity Request (AR) Process Flow, RO & SDOS

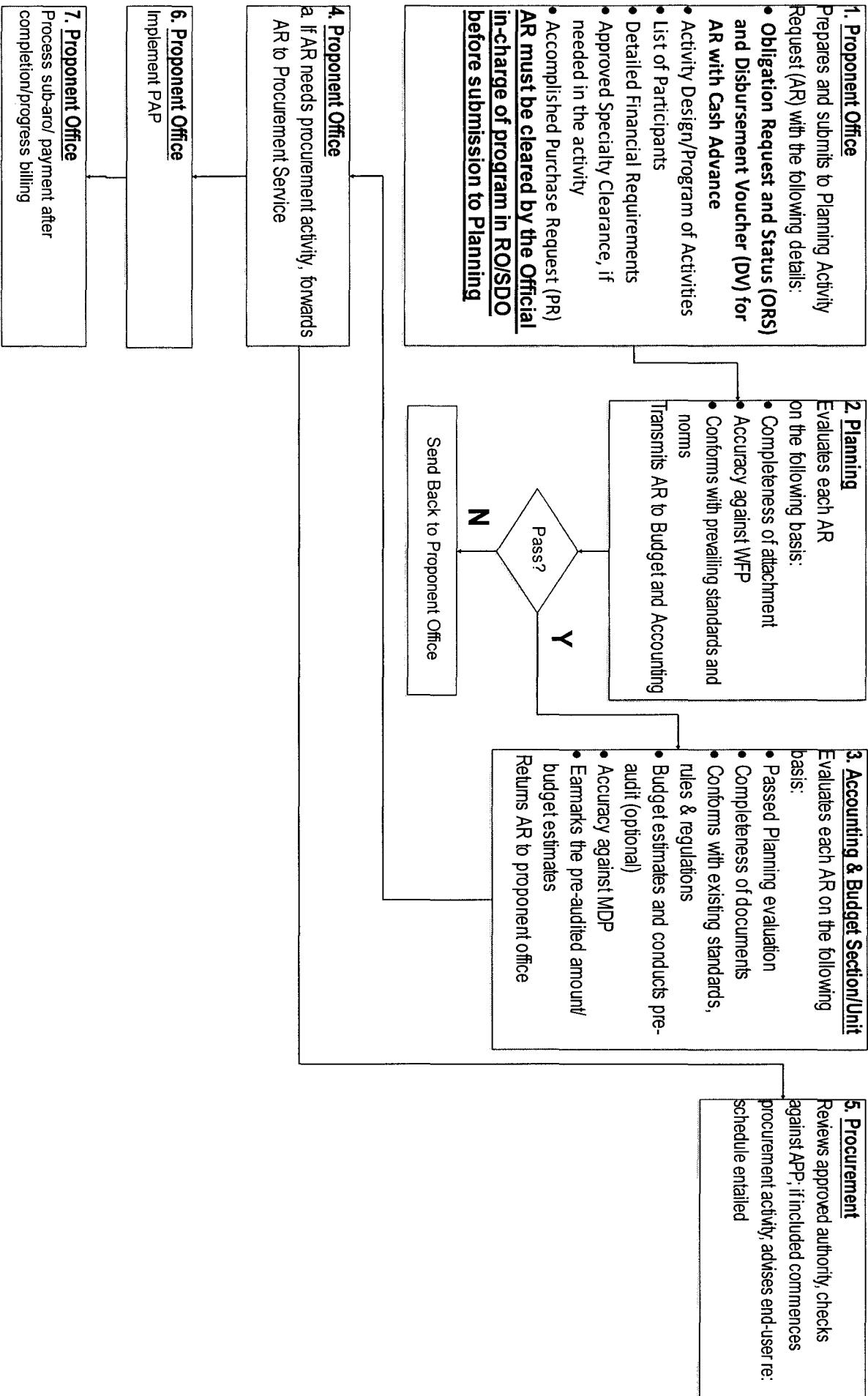
Annex C

Proponent

Planning

Finance

Procurement



Authority To Conduct (ATC) Process Flow, RO & SDOs

Annex C

