



REPUBLIKA NG PILIPINAS
 REPUBLIC OF THE PHILIPPINES
KAGAWARAN NG EDUKASYON, KULTURA AT ISPORTS
DEPARTMENT OF EDUCATION, CULTURE AND SPORTS
 UL Complex, Meralco Avenue
 Pasig, Metro Manila



*Sama-Sama
 sa DECS*

Office of the Secretary

16 September 1997

DECS ORDER
 No. 66, s. 1997

**PRESCRIBING A DECS UNIFORM
 FOR TEACHERS AND NON-TEACHING
 PERSONNEL NATIONWIDE**

To: Undersecretaries
 Assistant Secretaries
 Bureau Directors
 Regional Directors
 Directors of Services/Centers and Heads of Units
 Schools Superintendents
 Vocational School Superintendents, Administrators, Principals

1. In the past, all the officials and employees of DECS -- teaching and non-teaching personnel -- had a common uniform. Thus, it was not uncommon that non-teaching school officials and employees who visit schools at different times of the day are mistaken by the public as teachers arriving in schools late or leaving the schools early. Accordingly, school officials and other non-teaching DECS personnel in the Central, Regional and Division Offices and High Schools shall wear uniforms different from those prescribed for teaching personnel.

2. For this purpose, a Committee on DECS Uniforms for Teachers and Non-Teaching Personnel, composed of Undersecretary Antonio E. B. Nachura as Chairman, Assistant Secretary Josefina B. Nisperos and BNFE Director Rosario J. de Guzman as members, together with representatives of line Bureaus and Regional Offices, after a thorough selection process, recommended the following designs and colors which shall be worn on the days indicated opposite the design, as follows:

A. Female

I. For Non-Teaching Personnel:

- | | DAY |
|---|-------------|
| a. Gala Uniform(See Sketch as ANNEX "1" hereof) | - Monday |
| b. Design "A" (See Sketch as ANNEX "2" hereof) | - Tuesday |
| c. Design "B" (See Sketch as ANNEX "3" hereof) | - Wednesday |
| d. Design "C" (See Sketch as ANNEX "4" hereof) | - Thursday |

"Quality Education Towards Philippines 2000"

R.T.P.

2. For Teachers:

- | | DAY |
|--|-------------|
| a. Gala Uniform (Same Gala Uniform for non-teaching personnel) | - Monday |
| b. Design "D" (See Sketch as ANNEX "5" hereof) | - Tuesday |
| c. Design "E" (See Sketch as ANNEX "6" hereof) | - Wednesday |
| d. Design "F" (See Sketch as ANNEX "7" hereof) | - Thursday |

B. Male

- | | DAY |
|---|-------------|
| a. Gala Uniform(See Sketch as ANNEX "8" hereof) | - Monday |
| b. Design "G" (See Sketch as ANNEX "9" hereof) | - Tuesday |
| c. Design "H" (See Sketch as ANNEX "10" hereof) | - Wednesday |
| d. Design "I" (See Sketch as ANNEX "11" hereof) | - Thursday |

Note: There will be no prescribed uniform for both non-teaching personnel and teachers during Fridays for male and female personnel.

3. However, in cases where public school officials conduct field supervision or go to the schools located in mountainous areas or in islands requiring travel by boat, they shall be allowed to wear pants of the same color and cloth as the uniform, instead of the prescribed skirt. Female teachers and staff assigned in these areas are also allowed to wear pants.

4. School officials who occupy third level positions embraced by the Career Executive Service shall have a separate set of uniforms. A committee will be formed to select the uniforms for this group of officials.

5. With the full clothing allowance (P2,000.00 per employee) having been released in cash to the individual DECS officials and employees, each of them shall be given the option to make their own arrangements in regard to the prices and quality of services, whether textiles, garments or sewing services, in the acquisition of their respective uniforms.

6. However, all DECS teachers and employees are encouraged to purchase their uniforms from or through the Teacher's associations and/or Cooperatives.

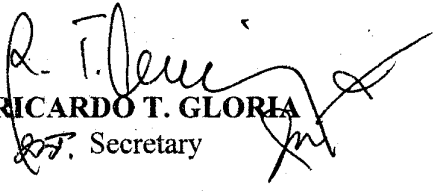
7. The newly prescribed uniforms shall be required to be worn by all DECS officials, teachers and non-teaching personnel starting on January 2, 1998.

RT

8. The following personnel are exempt from wearing the prescribed DECS uniform:

- (a) Medical and Dental Staff, who shall wear the white gown regularly and traditionally used by such personnel; and
- (b) Janitors and Maintenance personnel.

Please be guided accordingly.


RICARDO T. GLORIA
Secretary

Encls. :

As stated

References :

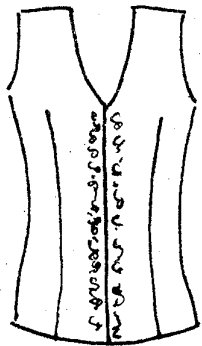
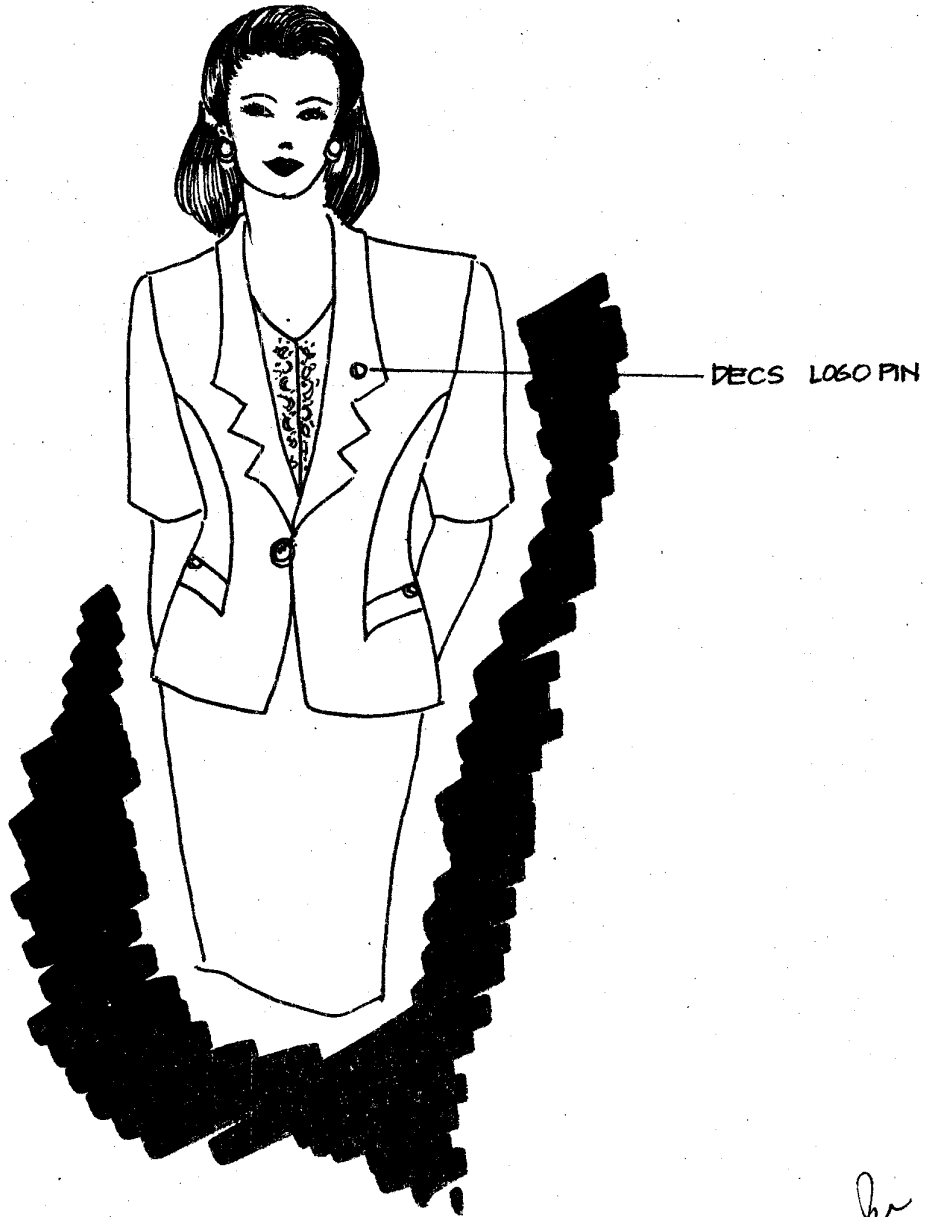
DECS Memorandum Nos. 339, s. 1994 and 44, s. 1995

Allotment : 1 - - (D.O. 50-97)

To be indicated in the Perpetual Index
under the following subjects:

2 RULES & REGULATIONS
4 UNIFORMS
3 TEACHERS
1 EMPLOYEES

TEACHING & NON-TEACHING GALA UNIFORM

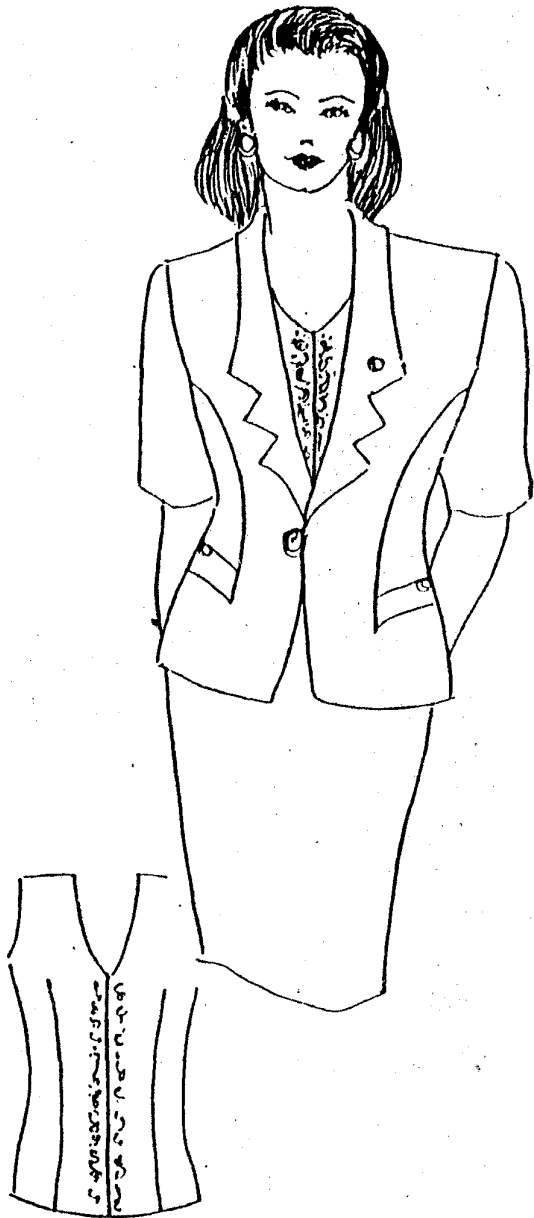


INNER BLOUSE

877. *ka*

Gala Uniform

Teaching & Non-teaching



An ivory white inner blouse with light coral embroidery perfectly matches the coral-colored jacket with top-stitched lapels. A large imported button closes the jacket while two matching buttons adorn each side pocket flap.

Elbow length sleeves, third-hips length blouse.

DECS Logo Pin

Matched perfectly with a knee-length coral skirt, with lining.

NON-TEACHING PERSONNEL'S DESIGN NO. 1
TUESDAY



877. Jm

✓ *Non-Teaching Personnel's*

Design Number 1 * Tuesday



*Front blouse panels in ivory white cloth
contrasted against a
light-ashen gray material
with eight imported,
colored-matching buttons.*

*Elbow length sleeves,
third-hips length blouse.*

DECS Logo Pin

*Matched perfectly with a
knee-length, light, ashen-gray skirt
with lining.*

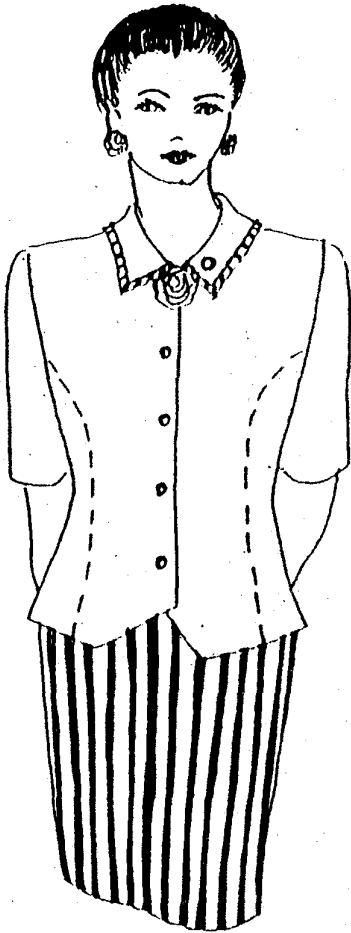
NON-TEACHING PERSONNELS DESIGN NO. 2
WEDNESDAY



877. *[Signature]*

Non-Teaching Personnel's

*Design Number 2 * Wednesday*



A light blue-gray blouse with a thickly-piped collar accentuated by a blue cabbage rose. Sides are topped-stitched adding contrast to the five imported buttons adorning the front of the blouse.

Elbow length sleeves, third-hips length blouse.

DECS Logo Pin

Matched perfectly with a knee-length, skirt in alternating bluish-gray/midnight blue stripes with pencil-thin, majestic purple lines, with lining.

NON-TEACHING PERSONNEL'S DESIGN NO. 3
THURSDAY



dot. *[Signature]*

Non-Teaching Personnel's

Design Number 3 * Thursday



An ivory-white blouse with embroidered cardinal-red flowerettes accentuating the rounded collar.

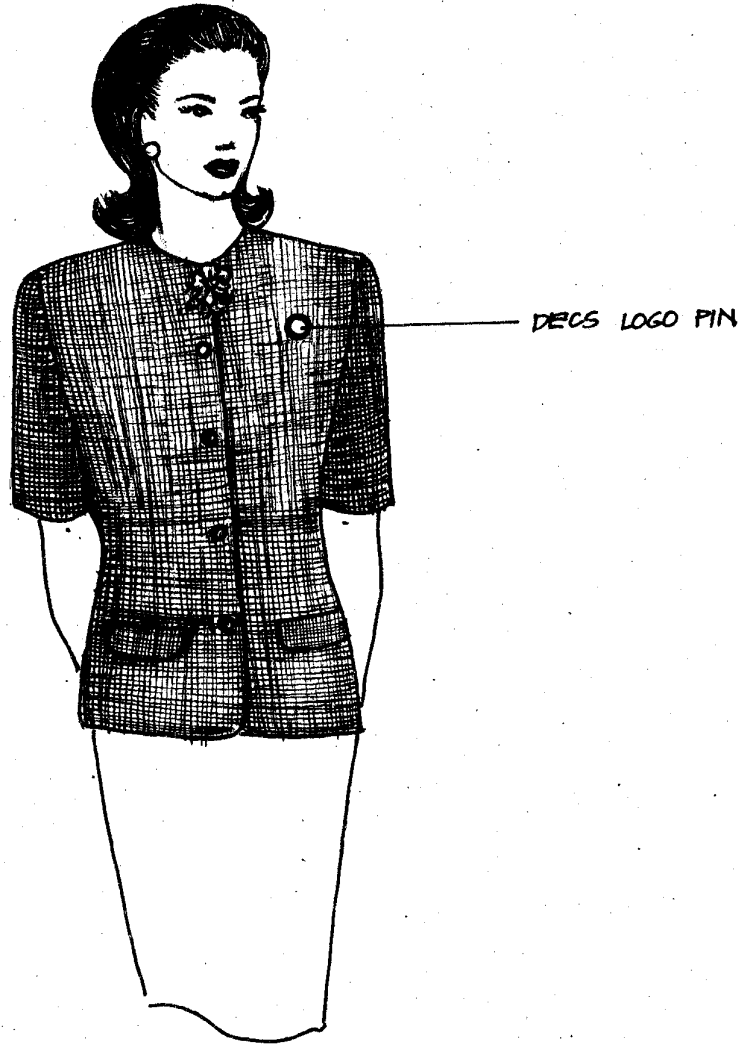
Piping upfront and on the elbow-length sleeves are done in a cardinal-red clothing material matching the collar embroidery.

Five imported buttons adorn the front of this third-hips length blouse.

DECS Logo Pin

Matched perfectly with a plain cardinal-red skirt with lining.

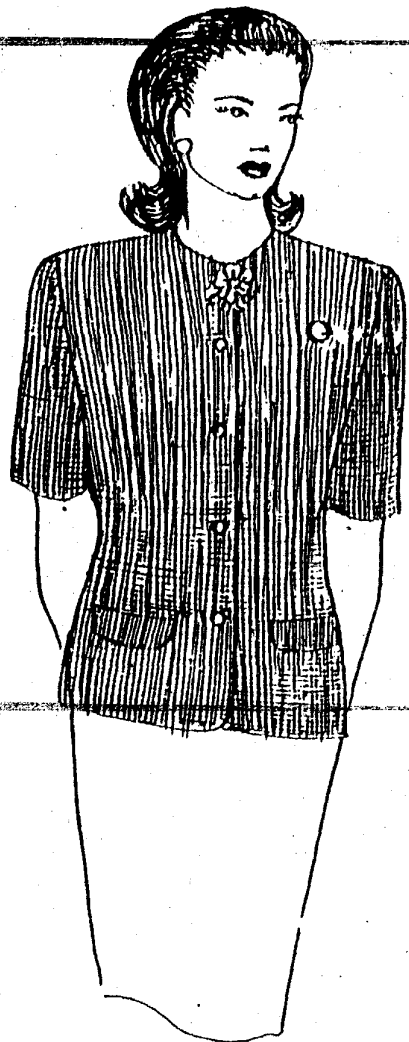
TEACHERS UNIFORM, DESIGN NO. 1
TUESDAY



807. *[Signature]*

Teachers Uniform

Design Number 1 * Tuesday



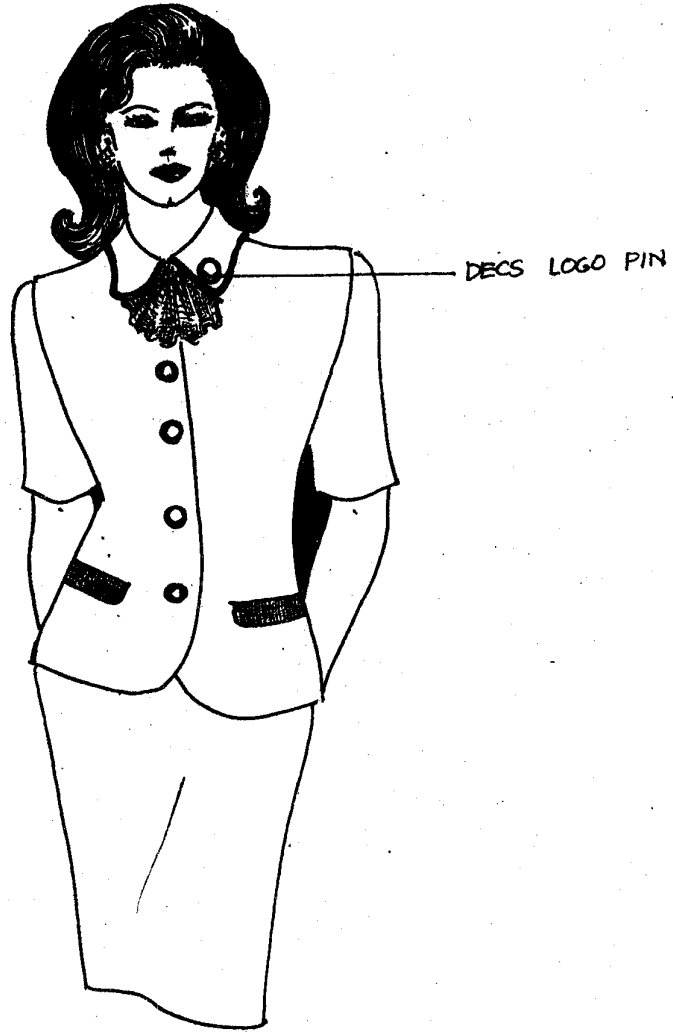
*Olive green, small-checked blouse
with five colored-matching,
imported buttons
accented by a green cabbage rose
along the neckline,
with pockets flaps on each side.*

*Elbow length sleeves,
third-hips length blouse.*

DECS Logo Pin

*Matched perfectly with a
knee-length, spring green skirt
with lining.*

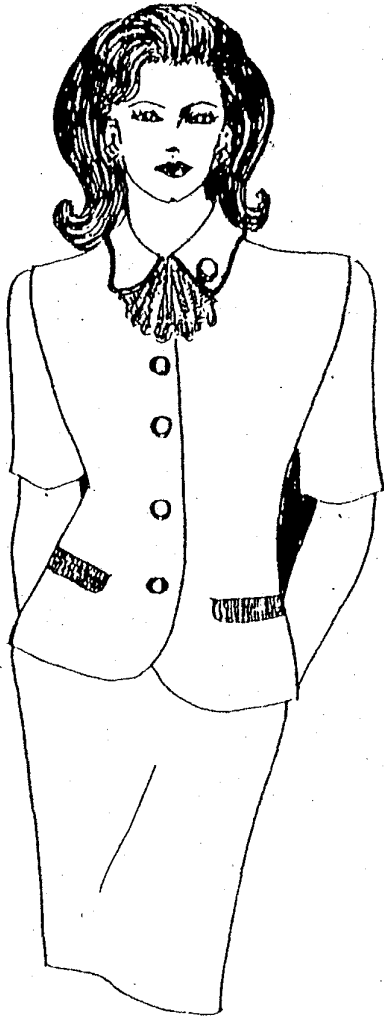
TEACHER'S UNIFORM DESIGN NO. 2
WEDNESDAY



875. Jm

Teachers Uniform

Design Number 2 * Wednesday



Ivory-beige blouse with five colored-matching, imported buttons accented by a ruffled bow along the neckline with a piped collar. The ruffled bow, the piping along the collar as well as the pocket flaps found on each side are done using a maroon, small-checked clothing material.

*Elbow length sleeves,
third-hips length blouse.*

DECS Logo Pin

*Matched perfectly with a
knee-length, cherry-red skirt with lining.*

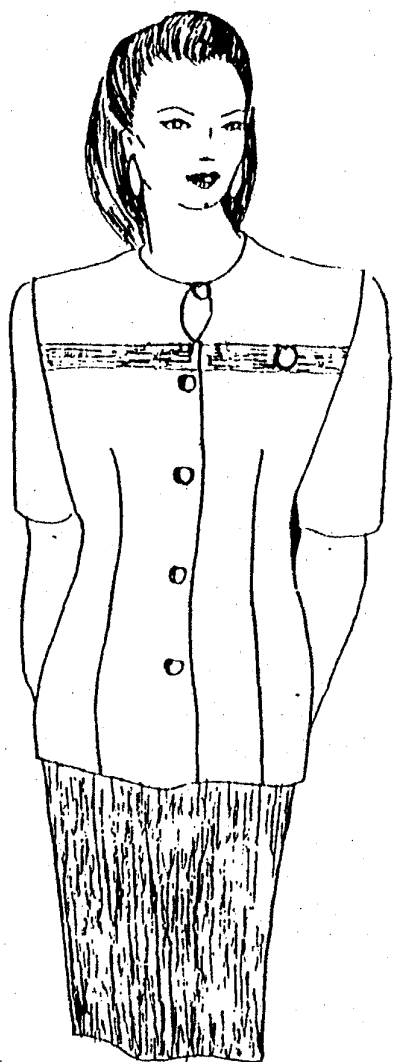
TEACHERS UNIFORM DESIGN NO. 3
THURSDAY



2017. Jm

Teachers Uniform

Design Number 3 * Thursday



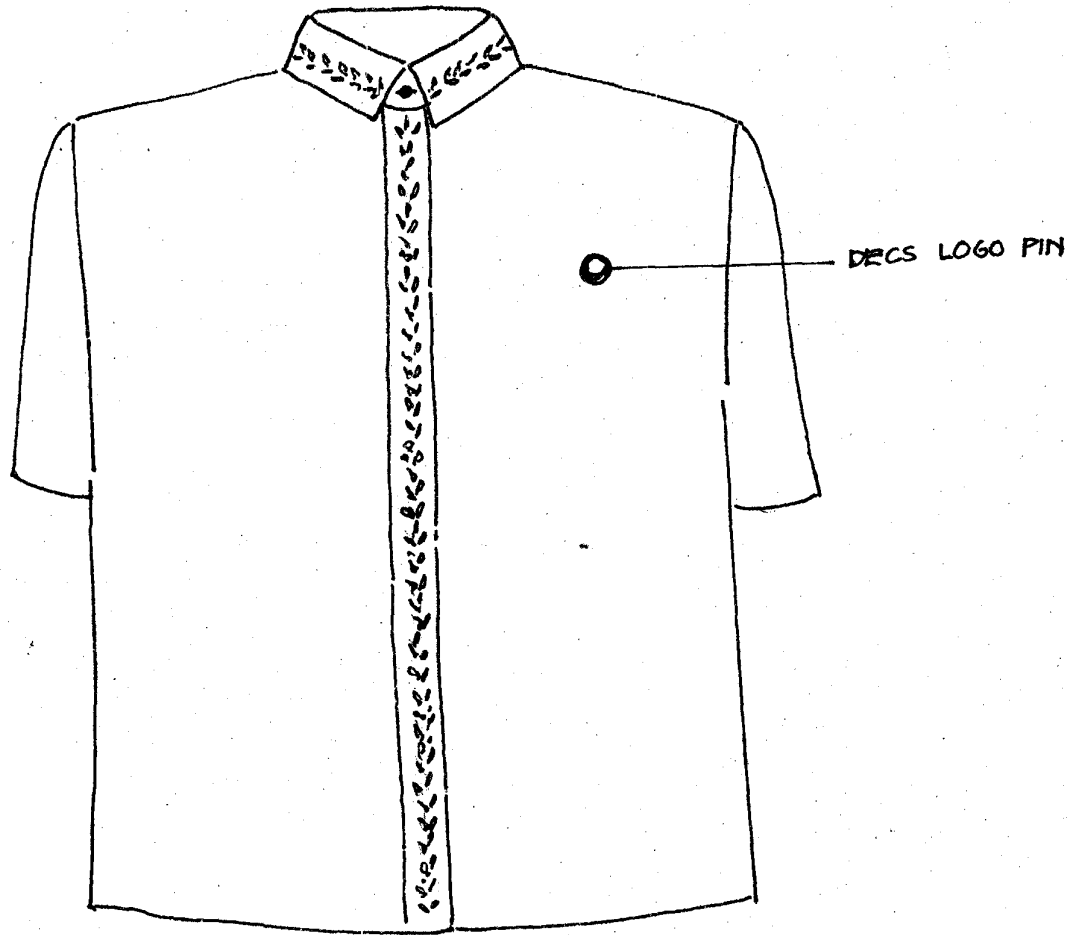
*A terracotta colored blouse
with five colored-matching,
imported buttons
accented by an elegant peak-a-boo cut
along the neckline,
and a horizontal cut upfront providing
contrast by using the same
clothing material as the skirt*

*Elbow length sleeves,
third-hips length blouse.*

DECS Logo Pin

*Matched perfectly with a
knee-length, woody-tan skirt
with lining.*

TEACHING & NON-TEACHING STANDARD MALE UNIFORM



COLORS FOR EACH DAY

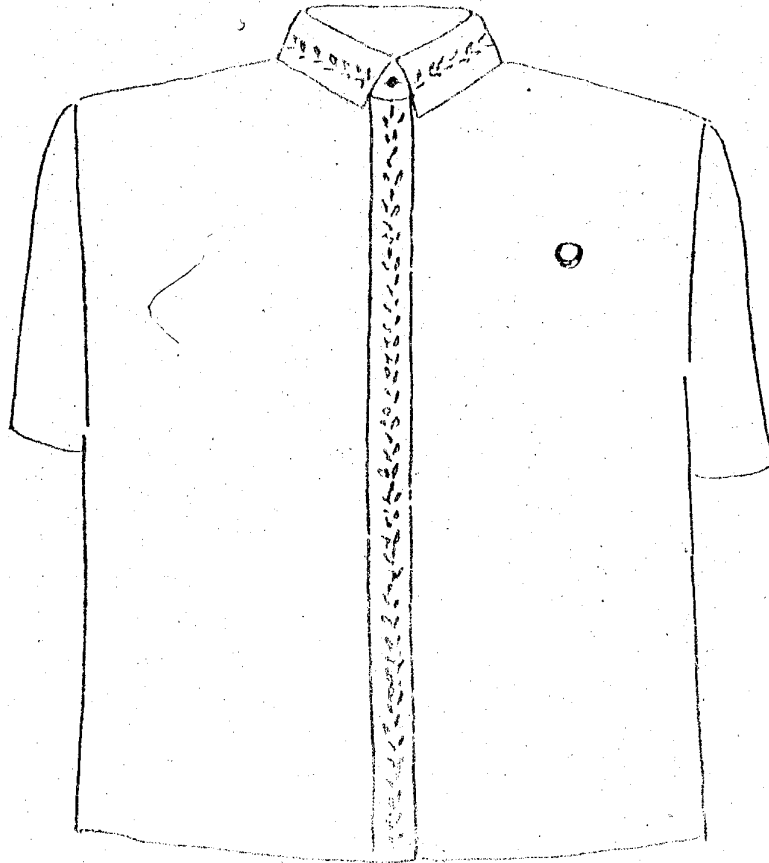
BEIGE (TUESDAY), SKY BLUE (WEDNESDAY), LIGHT GRAY (THURSDAY)
WITH BLACK & NAVY BLUE PANTS

A small, handwritten signature or set of initials, possibly "R", located at the bottom right of the page.

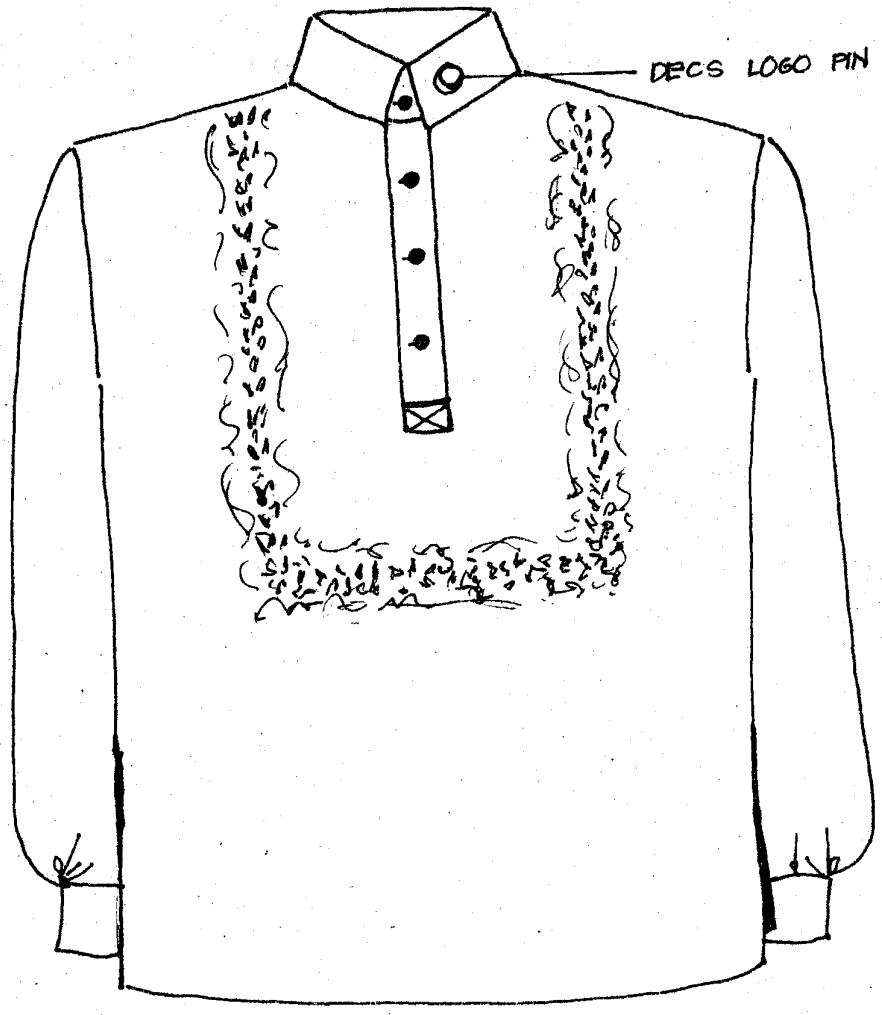
*Teaching & Non-Teaching
Male Uniform*

- STANDARD -

*A short-sleeved barong with embroidery design adorning the collar and the front.
Beige for Tuesday. Sky-blue for Wednesday. Light-gray for Thursday.
With black and navy blue pants.*



TEACHING & NON-TEACHING 'GALA' MALE UNIFORM
(MONDAY) CREAM
WITH BLACK & NAVY BLUE PANTS



fr

Teaching & Non-Teaching Male Uniform

- GALA -

*A long-sleeved cream barong embroidery design adorning the front.
With black and navy blue pants.*

