



Republic of the Philippines  
**Department of Education**

28 MAR 2018

DepEd ORDER  
No. **016**, s. 2018

**IMPLEMENTING GUIDELINES ON THE RELEASE AND USE OF FUNDS  
FOR FISCAL YEAR 2018**

To: Undersecretaries  
Assistant Secretaries  
Bureau and Service Directors  
Regional Directors  
Schools Division Superintendents  
Public Elementary and Secondary School Heads  
All Others Concerned

1. The Department of Education (DepEd) issues the enclosed **Implementing Guidelines on the Release and Use of Funds for Fiscal Year 2018** for the information and guidance of all concerned.
2. This Order shall take effect immediately upon issuance.
3. Immediate dissemination of and strict compliance with this Order is directed.

  
**LEONOR MAGTOLIS BRIONES**  
Secretary

Encl.:  
As stated

References:  
DepEd Order Nos. 67, s. 2016 and 009, s. 2017

To be indicated in the Perpetual Index  
under the following subjects:

ALLOTMENT	MONITORING AND EVALUATION
AUTHORITY	PAYMENT
BUDGET	POLICY
BUREAUS AND OFFICES	SCHOOLS
EXPENSES	
FUNDS	

## **Implementing Guidelines on the Release and Use of Funds for Fiscal Year 2018**

### **I. RATIONALE**

This DepEd Order aims to provide guidance on the policies, rules and regulations on the release, use and monitoring of funds for FY 2018. It also aims to ensure timely, effective, efficient utilization of resources, synchronize fund release with the implementation of DepEd's Programs, Activities, and Projects (P/A/Ps), and to institute mechanisms for transparency and accountability across the different DepEd offices nationwide.

### **II. POLICY STATEMENT**

The issuance of the implementing guidelines is based on Republic Act No. 10964 or the 2018 General Appropriations Act (GAA) and on the Department of Budget and Management's (DBM) National Budget Circular No. 573 dated January 3, 2018 or "Guidelines on the Release of Funds for FY 2018".

These guidelines consider the shift from a multi-year obligation-based budget to an annual cash-based budget in 2019.

### **III. SCOPE OF THE POLICY**

This DepEd Order covers the release and use of funds for nationwide implementation in the DepEd Central Office (CO), Regional Offices (ROs), Schools Division Offices (SDOs), and Schools.

### **IV. PROCEDURES**

#### **A. RELEASE OF FUNDS**

##### **1. Validity of Appropriations**

1.1 The effectivity date of the FY 2018 GAA is on 01 January 2018 per Section 104 of its General Provisions. FY 2018 Appropriations shall be valid for release and obligation for the purpose specified and subject to pertinent Special and General Provisions:

1.1.1 For Personnel Services (PS) – until December 31, 2018;

- 1.1.2 For Maintenance and Other Operating Expenses (MOOE) and Capital Outlay (CO) – until December 31, 2018; and
    - 1.1.3 For Financial Expenses (FinEx) – until December 31, 2018, considering that it is similarly treated as MOOE.
  - 1.2 The aggregate allotment releases for the year from all appropriation sources shall not exceed the Allotment Release Program of each DepEd Office which is consistent with the Total Obligation Program as per approved Budget Execution Documents (BEDs).
  - 1.3 The obligational authorities that will be issued by DBM for DepEd and its operating units to incur obligations include:
    - 1.3.1 The GAA as Allotment Order (GAAAO) for those categorized as “For Comprehensive Release”;
    - 1.3.2 Special Allotment Release Orders (SARO) to cover the release of budgetary items under “For Later Release” and releases from Special Purpose Funds; and
    - 1.3.3 General Allotment Release Order (GARO) to cover the comprehensive release of Retirement and Life Insurance Premiums (RLIP).
  - 1.4 Release of funds shall be made directly to the concerned DepEd Offices and operating units. Funds specifically appropriated to ROs, SDOs, and school implementing units (IUs) shall be released to them directly except for Centrally-Managed Items (CMIs).

## **2. Manner of Release of Funds**

- 2.1 For Comprehensive Release (FCR)
  - 2.1.1 The budgetary allocations accorded to DepEd under the 2018 GAA classified as “For Comprehensive Release (FCR)” are made available for obligation through the GAAAO, as shown in the attached **Annex A**.
- 2.2 FCR to DepEd-CO or CMIs
  - 2.2.1 The implementation of the following P/A/Ps, though comprehensively released, is subject to the issuance of guidelines from the DepEd CO:
    - Multigrade Education;
    - Indigenous Peoples Education;
    - School-Based Feeding Program; and

- Early Language Literacy and Numeracy

2.2.2 The allocation for Grant of Cash Allowance under Implementation of the Grant of Cash Allowance, Hardship Pay, Equivalent Records Forms (ERF), Conversion to Master Teacher (MT), Reclassification of Positions and Payment of Step Increments lodged in the Central Office is being directly released to the ROs since the breakdown per region is already available.

2.2.3 In addition, the Preliminary Detailed Engineering (PDE) fund under the Basic Education Facilities is being shared by both DepEd and the Department of Public Works and Highways (DPWH)-OSEC, and is also being comprehensively released to the respective agencies accordingly. The details of the adjustments are indicated in **Annex A-1**.

### 2.3 FCR to DepEd-CO with Sub-Allotment:

2.3.1 There are budgetary items that are lodged in the DepEd-CO which will be sub-allotted later for implementation by the DepEd field offices. Hereunder is the list of P/A/Ps that are comprehensively released to the CO but necessitates the downloading of funds for their implementation in the field units:

- General Management and Supervision
- Administration of Personnel Benefits (Anniversary Bonus)
- Physical Fitness and School Sports
- Development and Management of Bilateral and Multilateral Education Projects
- Management and Administration of Learning Resources
- Education Information and Communication Services
- Building Partnerships and Linkages Program
- Disaster Preparedness and Response Program
- National Assessment Systems for Basic Education
- Basic Education Curriculum
- Development and Promotion of Campus Journalism
- National Literacy Policies and Programs
- Improvement and Acquisition of School Sites
- Quick Response Fund

- Flexible Learning Options (ADM/ALS/EiE)
- Madrasah Education Program
- Operation of Schools - Senior High School (Grade 11 and Grade 12)
- Teacher Quality and Development Program
- Basic Education Facilities
  - Repair/Rehabilitation of Classrooms (Portion)
  - Pre-Detailed Engineering (PDE) Fund
- Human Resource Development for Personnel in Schools and Learning Centers
- Policy Research Program
- Organizational and Professional Development for Non-school/LCs Personnel

2.3.2 The cash requirements for the above-mentioned P/A/Ps shall be issued by the DBM-ROs concerned upon submission by the DepEd field implementing units of Special Budget Requests (SBRs), specifically for the release of additional cash allocations, supported by accomplished Monthly Disbursement Programs (MDPs).

#### 2.4 For Later Release (FLR)

2.4.1 Budgetary allocations that are classified as FLR are listed in **Annex B**. The release of these budgetary line items is subject to the submission of Special Budget Requests (SBR) to the DBM Office concerned.

#### 2.5 FLR to DepEd-CO/LLOUs:

2.5.1 The following are budgetary items classified as FLR and shall be released either to the DepEd CO or Lower Level Operating Units (LLOUs), as the case may be:

- Administration of Personnel Benefits (RG/TL and Creation and Filling-up of Non-Teaching Positions);
- Rehabilitation of the Track and Field Oval of the San Pablo Central Elementary School, San Pablo Laguna; and
- New School Personnel Positions (Creation and Filling-up of Teaching Positions)

#### 2.6 FLR TO DepEd-CO with Sub-Allotment:

2.6.1 The following budgetary items classified as FLR shall be released to the DepEd CO but necessitates downloading of funds for program/project implementation:

- New School Personnel Positions (Cash Allowance for New Positions)
- Basic Education Facilities
  - Repair/Rehabilitation (portion)
  - School Furniture
  - Electrification of on-grid schools
  - Engineering and Administrative Overhead
- Conservation and restoration of Gabaldon and other heritage school buildings
- Nationwide Audit of School Facilities
- Site Development Plans

2.7 FLR to DPWH-OSec

2.7.1 The budget allocation for construction, replacement, and completion of kindergarten, elementary and secondary school buildings and technical vocational laboratories (including portion of the EAO), as indicated in the herein attached **Annex B-1**, is classified as FLR under DPWH-OSec and shall be released to and administered by the said Department.

## **B. USE OF FUNDS**

### **3. Savings and Augmentation**

3.1 Savings refer to portions or balances of any released appropriations in the GAA, which have not been obligated as a result of the following:

3.1.1 Completion, final discontinuance or abandonment of an ongoing P/A/P for which the appropriation is authorized.

3.1.2 Implementation of measures resulting in improved systems and efficiencies and thus enabled an agency to meet and deliver the required or planned targets, programs and services approved in the GAA at a lesser cost.

3.2 In case of discontinuance or abandonment, such discontinued or abandoned P/A/P shall no longer be proposed for funding in the next two (2) fiscal years.

- 3.3 Allotments not yet obligated due to the fault of the DepEd offices concerned shall not be considered savings.
- 3.4 In the case of sub-allotted funds from Central Office, any savings generated from the situations listed in Section 3.1 which is requested to be used for the same P/A/P may be considered as modification of allotment and shall be subject to the guidelines on the same per Section 4.
- 3.5 Meanwhile, any savings generated from the situations listed in Section 3.1 which is requested to be used for or added to another P/A/P is considered as “augmentation.” The particulars of the expenditures to be funded from savings should be within the scope of, or covered by an existing P/A/P. But the existence of a P/A/P regardless of the availability of allotment class/object of expenditure is sufficient for the purpose of the augmentation, which may result from:
- 3.5.1 Unforeseen modifications or adjustments in the PAP;  
and
- 3.5.2 Re-assessment in the use, prioritization, and/or distribution of resources.
- 3.6 In the use of savings, priority shall be given to the payment of compensation, year-end bonus and cash gift, retirement gratuity, terminal leave benefits, old-age pension of veterans, and other personnel benefits authorized by law and in the FY 2018 GAA.

#### **4. Modification of Allotment**

- 4.1 As a general rule, agencies shall spend what is programmed in their respective appropriation in the GAA. In exceptional circumstances, agencies may modify the allotment issued within a P/A/P, subject to the approval of the following:
- 4.1.1 The heads of agencies for changes in the object of expenditure (Salaries and Wages, Travelling Expenses, Bank Charges, or Investment Outlays, etc.) within an allotment class (PS, MOOE or CO). This covers the use of savings discussed in Section 3.5.
- 4.1.2 The DBM for the following modifications:
- for the payment of newly-authorized Magna Carta benefits not otherwise appropriated;
  - from one allotment class to another;

- from one operating unit to another;
- within a Special Purpose Fund; and
- within the purpose authorized under the Unprogrammed Appropriations.

4.1.3 The President of the Philippines for the payment of intelligence funds within the Executive Branch.

4.2 For changes in the object of expenditure within an allotment class within the same P/A/P, the delegated approving authorities are as follows:

4.2.1 For CO, the Undersecretary for Finance-Budget and Performance Monitoring;

4.2.2 For ROs, including sub-allotted funds from CO, the Regional Directors; and

4.2.3 For SDOs and school IUs, including sub-allotted funds from DepEd-CO/ROs, the respective Schools Division Superintendents.

4.3 In the case of sub-allotted funds from DepEd-CO, although authorities have been delegated to field officials to approve modifications in the allotment, the concerned ROs, SDOs and school IUs shall provide the CO-Budget Division a copy and summary of their Realignment Advice Forms (RAF) at the end of each quarter.

4.4 In the case of savings generated from training activities which are proposed to be used for other training activities within the same P/A/P but which is/are not cited in the face of the Sub-Allotment Release Order, clearance from the Undersecretary for Finance – Budget and Performance Monitoring shall be secured prior to the utilization of said funds.

4.5 All modifications within Capital Outlays as appropriated may only be made until June 30, 2018, except if due to the occurrence of calamities.

4.6 All modifications in the allotment shall not entail any increase in the total amount appropriated for a P/A/P. In the case of program with several activities, modification may be done only within each activity.

## **5. Personnel Services Allotments**

5.1 All offices shall comply with the requirements and guidelines of the DBM in NBC No. 573 pertaining to PS appropriations/

allotments and General Provisions of the 2018 GAA on Personnel Benefits.

- 5.2 All offices should note the issuance of DBM's NBC No. 572 on the "Implementation of the Third Tranche Compensation Adjustment for Civilian Personnel and Military and Uniformed Personnel in the National Government" which prescribes the guidelines, rules, and regulations for the implementation of the third tranche compensation adjustment stipulated under Executive Order No. 201, series of 2016.
- 5.3 DepEd Officials and employees whether permanent, temporary or coterminous, and contractual personnel whose employment is in the nature of a regular employee, who have been appointed as such by virtue of a valid appointment and continue to be employed in the Department as of the occasion of its milestone anniversary, shall be entitled to the Anniversary Bonus in the amount of P3,000. This is pursuant to Administrative Order No. 263 dated March 28, 2018.
- 5.4 DBM Circular Letter No. 2018-3 dated January 16, 2018 provides the guidelines in the adjustment in the employer (government) share in the Health Insurance (HIP) Contributions to the Philippine Health Insurance Corporation (PhilHealth). The funding requirement for the government share shall be chargeable against the following sources:
  - 5.4.1 Agency Specific Budget for the requirements based on existing rates; and
  - 5.4.2 Miscellaneous Personnel Benefits Fund (MPBF) for the amounts required to adjust the HIP contributions effective January 1, 2018.
- 5.5 The annual cash allowance for public school teachers which is allotted for the purchase of chalks, erasers, and other supplies and materials directly used for classroom instruction is increased from P2,500 to P3,500.

## **6. Clarification on Capitalization Threshold of Assets Recognized as Plant, Property and Equipment**

- 6.1 The capitalization threshold of P15,000 represents the minimum cost of an individual asset recognized as Plant, Property and Equipment as prescribed in the Government Accounting Manual (GAM) issued by the Commission on Audit.

- 6.2 Public Elementary, and Junior and Senior High Schools may use their school MOOE budgets to procure small capital expenditure items **worth less than P15,000.**

**7. DepEd Plan Implementation Documents – Activity Request and Authority to Conduct**

- 7.1 To support the optimal and timely implementation of plans, the Department uses two (2) modes of plan execution, depending on the compliance of proposed plans/activities to the approved Work and Financial Plan.
- 7.2 If the proposed activity is in accordance with the approved WFP or the approved revised WFP of the office, then an **Activity Request (AR)** shall be used to trigger funds release for the conduct of the said activity. The offices may revise their WFPs and corresponding PPMPs once every quarter after the conduct of the Program Implementation Review (PIR). After which, the offices shall be given ten (10) working days to revise their WFPs and PPMPs. See **Annex C** for the template, process and workflow involved in the approval of an AR.
- 7.3 If the proposed activity is not included in the approved WFP, an **Authority to Conduct (ATC)** must be secured prior to plan execution. The office must provide legal basis or documentation of directives to implement such activity to support the ATC. This may be allowed in cases wherein the Department is tasked by the President or other oversight agencies to implement activities that are not included in the original WFP.
- 7.4 If the proposed activity is included in the approved WFP, but has major deviations from the original plan, an ATC must be secured prior to plan execution. The variations which are covered by this requirement include: increase in budget requirement for the activity amounting to at least ten percent (10%) of the approved activity budget reflected in the WFP for the field offices or amounting to Php100,000.00 or more for Central Office; change in the nature of the activity; or change in scope of the activity. See **Annex D** for the template, process and workflow involved in the approval of an ATC.
- 7.5 If there is any increase in the requested amount from the approved amount in the WFP, whether through AR or ATC, the office must identify other activities in the WFP which will be reprogrammed or deferred for implementation, to give way for the requested activity.

- 7.6 Mandatory expenses/overhead costs such as: (a) other supplies (b) water expense, (c) communication expense, (d) representation expense, (e) local travel expense, (f) fuel, oil and lubricants, (g) repair of office equipment, (h) courier expense and (i) legal expense shall be processed based on actual expenses and liquidation. For monitoring and proper accounting, the offices are required to reflect the **Activity Code per approved WFP** on the Obligation Request and Status (ORS) to facilitate payment of such transactions. If the offices in-charge for certification of availability of allotment (Budget Division/Finance Division/Budget Unit) determines that the funds for the particular expense item are no longer sufficient, the subsequent payments should be requested through the submission of an Authority to Pay. Note that this does not include activities falling under program funds such as planning, assessments and team-building which shall still be subjected to AR/ATC process.
- 7.7 Notwithstanding its inclusion in the approved Work and Financial Plan, transactions involving procurement and hiring of new contracts of service or consultants, and renewal thereof, shall be subject to an Authority to Procure or an Authority to Hire (whichever applies).
- 7.8 The downloading of funds for DepEd-CO initiated activities, though already covered by ARs and ATCs, shall still be subject to the approval by the Undersecretary for Finance - Budget and Performance Monitoring. The new AR/ATC template includes a section for this purpose, signing of which shall serve as the approved authority to download funds. The Budget Division shall then facilitate the preparation and subsequent approval of the corresponding Sub-Allotment Release Order. This amends item 4.5.1 of DepEd Order 67, s. 2016 relative to Authority to Download Funds.
- 7.9 The traveling expenses of field participants for DepEd-CO initiated activities, chargeable against Central Office funds, shall be downloaded to the Regions/Schools Division Offices where the participants will be coming from. The proponent bureaus and offices shall ensure that the funds be downloaded prior to the conduct of the activities to give ample time to the ROs/SDOs in processing the TEVs of their personnel attending the activities. In case the host RO/SDO is being requested to process the TEVs of all participants to an activity, a Letter of Acceptance from the said RO/SDO shall be secured.
- 7.10 Further, similar to the downloading of TEVs for all participants, the downloading of funds particularly for board and lodging of participants for DepEd-CO initiated activities,

a Letter of Acceptance shall be secured from the Regions/SDOs being requested to host the activities.

7.11 For the Central Office, the Undersecretary or Assistant Secretary concerned will be the approving authority for Activity Requests (AR) involving an amount up to PhP30,000,000.00. While the following will be the signing authorities for requests for Authority to Conduct (ATC) for transactions up to PhP30,000,000.00:

Requesting Official	Approving Official (Policy)	Approving Official (Finance)
Director Permanent Co-term Executive Assistant (EA) if requesting office are Offices of the Secretary, Undersecretaries, and Assistant Secretaries	Undersecretary or Assistant Secretary concerned	Undersecretary for Finance - BPM with initials of the Director for Finance-BPM

This amends item 4.1.2 of DepEd Order No. 67, s. 2016 relative to the signing authority on Authority to Conduct Activities.

## 8. Some Procurement Reminders

- 8.1 Procurement may commence even pending the release of allotment, but short of award, pursuant to the provisions DBM Circular Letter No. 2010-9, Guidelines Directing Agencies to Expedite the Implementation of Their Procurement Activities;
- 8.2 Awarded contracts are deemed obligated only upon the end-user's submission of the Obligation Request and Status (ORS) supported by the notarized contract;
- 8.3 Procurement of venues and facilities
  - 8.3.1 In the payment of board and lodging, Disbursement Vouchers should include not only the signed contract but also the appropriate Bids and Awards Committee (BAC) resolution and related documents, (e.g. Agency to Agency procurement or Lease of Real Property or Venue).

8.3.2 To ensure that resources are maximized, the use of DepEd facilities, such as the Regional Education Learning Centers (RELCs), ECOTECH Center, National Educators Academy of the Philippines (NEAP), Applied Nutrition Center, and Baguio Teachers Camp (BTC), and other government-owned venues is highly encouraged.

8.4 For other procurement-related matters, please refer to the Implementing Rules and Regulations of Republic Act No. 9184, otherwise known as the Government Procurement Reform Act.

## **V. Monitoring and Evaluation**

- A.** All offices shall comply with the reporting requirements contained in NBC No. 573 including the submission of Budget and Financial Accountability Reports as prescribed under COA-DBM Joint Circular No. 2014-1 and DBM Circular Letter No. 2016-1.
- B.** All WFPs, PPMPs, and APP-CSEs shall be uploaded to the Program Management Information System (PMIS). It shall serve as a tool for the Department to closely monitor the progress and implementation of various programs, activities and projects. With this, all offices are required to **update the physical accomplishments on a quarterly basis on or before the 5th day of the succeeding month of each quarter.** Budget units at all governance levels shall upload the financial data on a weekly basis.
- C.** The DepEd-CO Planning Service, Budget Division, and Procurement Service shall ensure compliance of the different offices with the provisions of this Order.
- D.** Any related concerns not covered by the provisions above may be referred to the Central Office Finance Service – Budget Division at (02) 637-6203 or (02) 637-4214 and/or Central Office Planning Service – Planning and Programming Division at (02) 633-7216.

## **VI. Effectivity**

This Order shall take effect immediately upon issuance.

DEPARTMENT OF EDUCATION - OFFICE OF THE SECRETARY

SUMMARY OF APPROPRIATIONS UNDER FOR COMPREHENSIVE RELEASE (FCR) THROUGH THE GAA AS AN ALLOTMENT ORDER (GAAAO)

Annex 'A'

(in Thousand Pesos)

PARTICULARS	FY 2018 GAA (R.A. No. 10964)					For Comprehensive Release (Annex A)				
	PS	MOOE	CO	TOTAL		PS	MOOE	CO	TOTAL	
10000000000000000000	I. General Administration and Support	21,487,962	3,386,556	1,290,000	26,164,518	12,205,265	3,386,556	1,290,000	16,881,821	
100000010000010000	General Management and Supervision	9,890,717	3,386,556	1,290,000	14,567,273	9,890,717	3,386,556	1,290,000	14,567,273	
	CAR	373,945	84,399	5,500	463,844	373,945	84,399	5,500	463,844	
	CENTRAL OFFICE	168,582	794,170	1,160,000	2,122,752	168,582	794,170	1,160,000	2,122,752	
	NCR	650,613	216,945	9,500	877,058	650,613	216,945	9,500	877,058	
	REGION I	601,595	155,561	8,500	765,656	601,595	155,561	8,500	765,656	
	REGION II	525,873	111,329	6,000	643,202	525,873	111,329	6,000	643,202	
	REGION III	916,755	249,070	11,500	1,177,325	916,755	249,070	11,500	1,177,325	
	REGION IVA	856,337	271,689	12,000	1,140,026	856,337	271,689	12,000	1,140,026	
	REGION IVB	353,421	103,683	5,000	462,104	353,421	103,683	5,000	462,104	
	REGION IX	364,132	117,107	5,500	486,739	364,132	117,107	5,500	486,739	
	REGION V	545,867	182,671	8,000	736,538	545,867	182,671	8,000	736,538	
	REGION VI	899,929	222,010	10,500	1,132,439	899,929	222,010	10,500	1,132,439	
	REGION VIII	521,514	211,726	11,000	744,240	521,514	211,726	11,000	744,240	
	REGION VIII	1,529,239	159,972	8,000	1,697,211	1,529,239	159,972	8,000	1,697,211	
	REGION X	499,749	143,611	8,500	651,860	499,749	143,611	8,500	651,860	
	REGION XI	283,616	130,530	7,000	421,146	283,616	130,530	7,000	421,146	
	REGION XII	459,169	122,407	6,000	587,576	459,169	122,407	6,000	587,576	
	REGION XIII	340,381	109,676	7,500	457,557	340,381	109,676	7,500	457,557	
	a. Central Office	168,582	794,170	1,160,000	2,122,752	168,582	794,170	1,160,000	2,122,752	
	CENTRAL OFFICE	155,644	791,296	1,160,000	2,106,940	155,644	791,296	1,160,000	2,106,940	
	BAGUO TEACHER'S CAMP	12,938	2,874	-	15,812	12,938	2,874	-	15,812	
	b. Regional Office Proper	406,577	594,273	24,000	1,024,850	406,577	594,273	24,000	1,024,850	
	CAR	24,484	29,687	1,500	55,671	24,484	29,687	1,500	55,671	
	NCR	28,968	40,514	1,500	70,982	28,968	40,514	1,500	70,982	
	REGION I	30,261	37,070	1,500	68,831	30,261	37,070	1,500	68,831	
	REGION II	24,830	27,807	1,500	54,137	24,830	27,807	1,500	54,137	
	REGION III	25,670	51,096	1,500	78,266	25,670	51,096	1,500	78,266	
	REGION IVA	27,651	53,473	1,500	82,624	27,651	53,473	1,500	82,624	
	REGION IVB	24,095	29,692	1,500	55,287	24,095	29,692	1,500	55,287	
	REGION IX	29,487	29,683	1,500	60,670	29,487	29,683	1,500	60,670	
	REGION V	18,790	37,806	1,500	58,096	18,790	37,806	1,500	58,096	
	REGION VI	25,374	48,939	1,500	75,813	25,374	48,939	1,500	75,813	
	REGION VII	19,707	48,333	1,500	69,540	19,707	48,333	1,500	69,540	
	REGION VIII	30,737	35,716	1,500	67,953	30,737	35,716	1,500	67,953	
	REGION X	23,878	35,068	1,500	60,446	23,878	35,068	1,500	60,446	
	REGION XI	26,738	29,539	1,500	57,777	26,738	29,539	1,500	57,777	
	REGION XII	23,746	31,136	1,500	56,382	23,746	31,136	1,500	56,382	

DEPARTMENT OF EDUCATION - OFFICE OF THE SECRETARY

SUMMARY OF APPROPRIATIONS UNDER FOR COMPREHENSIVE RELEASE (FCR) THROUGH THE GAA AS AN ALLOTMENT ORDER (GAAAO)

Annex 'A'

(In Thousand Pesos)

PARTICULARS	FY 2018 GAA (R.A. No. 10964)				For Comprehensive Release (Annex A)			
	PS	MOOE	CO	TOTAL	PS	MOOE	CO	TOTAL
REGION XIII	22,161	28,714	1,500	52,375	22,161	28,714	1,500	52,375
c. Division Office Proper	5,246,883	1,998,113	106,000	7,350,996	5,246,883	1,998,113	106,000	7,350,996
CAR	202,680	54,712	4,000	261,392	202,680	54,712	4,000	261,392
NCR	327,070	176,431	8,000	511,501	327,070	176,431	8,000	511,501
REGION I	277,918	118,491	7,000	403,409	277,918	118,491	7,000	403,409
REGION II	276,638	83,522	4,500	364,660	276,638	83,522	4,500	364,660
REGION III	546,746	197,974	10,000	754,720	546,746	197,974	10,000	754,720
REGION IVA	539,174	218,216	10,500	767,890	539,174	218,216	10,500	767,890
REGION IVB	195,681	73,991	3,500	273,172	195,681	73,991	3,500	273,172
REGION IX	210,120	87,424	4,000	301,544	210,120	87,424	4,000	301,544
REGION V	282,762	144,865	6,500	434,127	282,762	144,865	6,500	434,127
REGION VI	518,441	173,071	9,000	700,512	518,441	173,071	9,000	700,512
REGION VII	355,219	163,393	9,500	528,112	355,219	163,393	9,500	528,112
REGION VIII	573,714	124,256	6,500	704,470	573,714	124,256	6,500	704,470
REGION X	312,868	108,543	7,000	428,411	312,868	108,543	7,000	428,411
REGION XI	131,260	100,991	5,500	237,751	131,260	100,991	5,500	237,751
REGION XII	292,815	91,271	4,500	388,586	292,815	91,271	4,500	388,586
REGION XIII	203,777	80,962	6,000	290,739	203,777	80,962	6,000	290,739
d. Secondary Schools	4,068,675	-	-	4,068,675	4,068,675	-	-	4,068,675
CAR	146,781	-	-	146,781	146,781	-	-	146,781
NCR	294,575	-	-	294,575	294,575	-	-	294,575
REGION I	293,416	-	-	293,416	293,416	-	-	293,416
REGION II	224,405	-	-	224,405	224,405	-	-	224,405
REGION III	344,339	-	-	344,339	344,339	-	-	344,339
REGION IVA	289,512	-	-	289,512	289,512	-	-	289,512
REGION IVB	133,645	-	-	133,645	133,645	-	-	133,645
REGION IX	124,525	-	-	124,525	124,525	-	-	124,525
REGION V	244,315	-	-	244,315	244,315	-	-	244,315
REGION VI	356,114	-	-	356,114	356,114	-	-	356,114
REGION VII	146,588	-	-	146,588	146,588	-	-	146,588
REGION VIII	924,788	-	-	924,788	924,788	-	-	924,788
REGION X	163,003	-	-	163,003	163,003	-	-	163,003
REGION XI	125,618	-	-	125,618	125,618	-	-	125,618
REGION XII	142,608	-	-	142,608	142,608	-	-	142,608
REGION XIII	114,443	-	-	114,443	114,443	-	-	114,443
Administration of Personnel Benefits	11,597,245	-	-	11,597,245	2,314,548	-	-	2,314,548
CAR	379,324	-	-	379,324	-	-	-	-
CENTRAL OFFICE	2,792,792	-	-	2,792,792	2,314,548	-	-	2,314,548

DEPARTMENT OF EDUCATION - OFFICE OF THE SECRETARY

Annex 'A'

SUMMARY OF APPROPRIATIONS UNDER FOR COMPREHENSIVE RELEASE (FCR) THROUGH THE GAA AS AN ALLOTMENT ORDER (GAAAO)

(In Thousand Pesos)

PARTICULARS	FY 2018 GAA (R.A. No. 10964)				For Comprehensive Release (Annex A)			
	PS	MOOE	CO	TOTAL	PS	MOOE	CO	TOTAL
NCR	694,826	-	-	694,826	-	-	-	-
REGION I	525,060	-	-	525,060	-	-	-	-
REGION II	476,798	-	-	476,798	-	-	-	-
REGION III	664,142	-	-	664,142	-	-	-	-
REGION IVA	824,764	-	-	824,764	-	-	-	-
REGION IVB	352,925	-	-	352,925	-	-	-	-
REGION IX	547,587	-	-	547,587	-	-	-	-
REGION V	689,940	-	-	689,940	-	-	-	-
REGION VI	468,649	-	-	468,649	-	-	-	-
REGION VII	864,672	-	-	864,672	-	-	-	-
REGION VIII	662,981	-	-	662,981	-	-	-	-
REGION X	407,355	-	-	407,355	-	-	-	-
REGION XI	414,103	-	-	414,103	-	-	-	-
REGION XII	374,993	-	-	374,993	-	-	-	-
REGION XIII	456,334	-	-	456,334	-	-	-	-
a. Lump-sum for Retirement Gratuity and Terminal Leave Benefits	1,807,643	-	-	1,807,643	-	-	-	-
CAR	103,259	-	-	103,259	-	-	-	-
CENTRAL OFFICE	10,849	-	-	10,849	-	-	-	-
NCR	314,054	-	-	314,054	-	-	-	-
REGION I	2,593	-	-	2,593	-	-	-	-
REGION II	154,342	-	-	154,342	-	-	-	-
REGION III	112,223	-	-	112,223	-	-	-	-
REGION IVA	181,714	-	-	181,714	-	-	-	-
REGION IVB	2,382	-	-	2,382	-	-	-	-
REGION IX	134,873	-	-	134,873	-	-	-	-
REGION V	111,916	-	-	111,916	-	-	-	-
REGION VI	48,379	-	-	48,379	-	-	-	-
REGION VII	160,875	-	-	160,875	-	-	-	-
REGION VIII	125,728	-	-	125,728	-	-	-	-
REGION X	107,732	-	-	107,732	-	-	-	-
REGION XI	80,743	-	-	80,743	-	-	-	-
REGION XII	36,103	-	-	36,103	-	-	-	-
REGION XIII	119,878	-	-	119,878	-	-	-	-
b. Lump-sum for Anniversary Bonus	2,314,548	-	-	2,314,548	2,314,548	-	-	2,314,548
CENTRAL OFFICE	2,314,548	-	-	2,314,548	2,314,548	-	-	2,314,548
e. Lump-sum for Creation of Non-Teaching Positions	4,122,458	-	-	4,122,458	-	-	-	-
CAR	187,988	-	-	187,988	-	-	-	-

DEPARTMENT OF EDUCATION - OFFICE OF THE SECRETARY

Annex 'A'

SUMMARY OF APPROPRIATIONS UNDER FOR COMPREHENSIVE RELEASE (FCR) THROUGH THE GAA AS AN ALLOTMENT ORDER (GAAAO)

(In Thousand Pesos)

PARTICULARS	FY 2018 GAA (R.A. No. 10964)				For Comprehensive Release (Annex A)			
	PS	MOOE	CO	TOTAL	PS	MOOE	CO	TOTAL
CENTRAL OFFICE	372,801	-	-	372,801	-	-	-	-
NCR	32,994	-	-	32,994	-	-	-	-
REGION I	375,976	-	-	375,976	-	-	-	-
REGION II	205,636	-	-	205,636	-	-	-	-
REGION III	254,743	-	-	254,743	-	-	-	-
REGION IVA	248,924	-	-	248,924	-	-	-	-
REGION IVB	204,101	-	-	204,101	-	-	-	-
REGION IX	283,900	-	-	283,900	-	-	-	-
REGION V	375,208	-	-	375,208	-	-	-	-
REGION VI	229,422	-	-	229,422	-	-	-	-
REGION VII	344,517	-	-	344,517	-	-	-	-
REGION VIII	293,875	-	-	293,875	-	-	-	-
REGION X	128,906	-	-	128,906	-	-	-	-
REGION XI	151,479	-	-	151,479	-	-	-	-
REGION XII	207,170	-	-	207,170	-	-	-	-
REGION XIII	224,818	-	-	224,818	-	-	-	-
<i>f</i> Lump-sum for Filling-up of Non-Teaching Positions	3,352,596	-	-	3,352,596	-	-	-	-
CAR	88,077	-	-	88,077	-	-	-	-
CENTRAL OFFICE	94,594	-	-	94,594	-	-	-	-
NCR	347,778	-	-	347,778	-	-	-	-
REGION I	146,491	-	-	146,491	-	-	-	-
REGION II	116,820	-	-	116,820	-	-	-	-
REGION III	297,176	-	-	297,176	-	-	-	-
REGION IVA	394,126	-	-	394,126	-	-	-	-
REGION IVB	146,442	-	-	146,442	-	-	-	-
REGION IX	128,814	-	-	128,814	-	-	-	-
REGION V	202,816	-	-	202,816	-	-	-	-
REGION VI	190,848	-	-	190,848	-	-	-	-
REGION VII	359,280	-	-	359,280	-	-	-	-
REGION VIII	243,378	-	-	243,378	-	-	-	-
REGION X	170,717	-	-	170,717	-	-	-	-
REGION XI	181,881	-	-	181,881	-	-	-	-
REGION XII	131,720	-	-	131,720	-	-	-	-
REGION XIII	111,638	-	-	111,638	-	-	-	-
<b>2000000000000000 II. Support To Operations</b>	<b>1,622,250</b>	<b>1,695,458</b>	<b>32,500</b>	<b>3,350,208</b>	<b>1,622,250</b>	<b>1,695,458</b>	<b>2,500</b>	<b>3,320,208</b>
<b>200000100001000 Physical Fitness and School Sports</b>	<b>5,068</b>	<b>350,587</b>	<b>32,500</b>	<b>388,155</b>	<b>5,068</b>	<b>350,587</b>	<b>2,500</b>	<b>358,155</b>
CENTRAL OFFICE	5,068	350,587	2,500	358,155	5,068	350,587	2,500	358,155
<b>Projects(s)</b>	<b>-</b>	<b>-</b>	<b>30,000</b>	<b>30,000</b>	<b>-</b>	<b>-</b>	<b>-</b>	<b>-</b>

DEPARTMENT OF EDUCATION - OFFICE OF THE SECRETARY

Annex 'A'

SUMMARY OF APPROPRIATIONS UNDER FOR COMPREHENSIVE RELEASE (FCR) THROUGH THE GAA AS AN ALLOTMENT ORDER (GAAAO)

(in Thousand Pesos)

PARTICULARS	FY 2018 GAA (R.A. No. 10964)				For Comprehensive Release (Annex A)			
	PS	MOOE	CO	TOTAL	PS	MOOE	CO	TOTAL
Locally-Funded Project(s)	-	-	30,000	30,000	-	-	-	-
Rehabilitation of the Track and Field Oval of the San Pablo Central Elementary School, San Pablo Laguna REGION IVA	-	-	30,000	30,000	-	-	-	-
Development and Management of Bilateral and Multilateral Education Projects CENTRAL OFFICE	11,403	20,000	-	31,403	11,403	20,000	-	31,403
200000100002000	11,403	20,000	-	31,403	11,403	20,000	-	31,403
Management and Administration of Learning Resources CENTRAL OFFICE	33,956	10,303	-	44,259	33,956	10,303	-	44,259
200000100003000	33,956	10,303	-	44,259	33,956	10,303	-	44,259
a. BLR-Cebu	-	5,748	-	5,748	-	5,748	-	5,748
b. BLR-Manila	33,956	4,555	-	38,511	33,956	4,555	-	38,511
Planning and Management Information Systems CAR	85,976	65,121	-	151,097	85,976	65,121	-	151,097
200000100004000	85,976	65,121	-	151,097	85,976	65,121	-	151,097
CENTRAL OFFICE	4,737	-	-	4,737	4,737	-	-	4,737
NCR	23,972	65,121	-	89,093	23,972	65,121	-	89,093
REGION I	2,056	-	-	2,056	2,056	-	-	2,056
REGION II	3,468	-	-	3,468	3,468	-	-	3,468
REGION III	3,656	-	-	3,656	3,656	-	-	3,656
REGION IIIA	5,288	-	-	5,288	5,288	-	-	5,288
REGION IVB	4,674	-	-	4,674	4,674	-	-	4,674
REGION IX	4,722	-	-	4,722	4,722	-	-	4,722
REGION V	4,283	-	-	4,283	4,283	-	-	4,283
REGION VI	2,809	-	-	2,809	2,809	-	-	2,809
REGION VII	1,167	-	-	1,167	1,167	-	-	1,167
REGION VIII	3,212	-	-	3,212	3,212	-	-	3,212
REGION X	4,356	-	-	4,356	4,356	-	-	4,356
REGION XI	4,032	-	-	4,032	4,032	-	-	4,032
REGION XII	4,087	-	-	4,087	4,087	-	-	4,087
REGION XIII	4,737	-	-	4,737	4,737	-	-	4,737
Education Information and Communication Services CENTRAL OFFICE	12,425	12,319	-	24,744	12,425	12,319	-	24,744
200000100005000	12,425	12,319	-	24,744	12,425	12,319	-	24,744
Learner Support Programs CAR	1,358,669	281,020	-	1,639,689	1,358,669	281,020	-	1,639,689
200000100006000	1,358,669	281,020	-	1,639,689	1,358,669	281,020	-	1,639,689
CENTRAL OFFICE	55,150	-	-	55,150	55,150	-	-	55,150
NCR	15,463	281,020	-	296,483	15,463	281,020	-	296,483
	83,875	-	-	83,875	83,875	-	-	83,875

DEPARTMENT OF EDUCATION - OFFICE OF THE SECRETARY

Annex 'A'

SUMMARY OF APPROPRIATIONS UNDER FOR COMPREHENSIVE RELEASE (FCR) THROUGH THE GAA AS AN ALLOTMENT ORDER (GAAAO)

(In Thousand Pesos)

PARTICULARS	FY 2018 GAA (R.A. No. 10964)					For Comprehensive Release (Annex A)				
	PS	MOOE	CO	TOTAL		PS	MOOE	CO	TOTAL	
REGION I	91,843	-	-	91,843		91,843	-	-	91,843	
REGION II	44,288	-	-	44,288		44,288	-	-	44,288	
REGION III	118,405	-	-	118,405		118,405	-	-	118,405	
REGION IVA	145,249	-	-	145,249		145,249	-	-	145,249	
REGION IVB	55,551	-	-	55,551		55,551	-	-	55,551	
REGION IX	89,375	-	-	89,375		89,375	-	-	89,375	
REGION V	139,387	-	-	139,387		139,387	-	-	139,387	
REGION VI	97,641	-	-	97,641		97,641	-	-	97,641	
REGION VII	113,483	-	-	113,483		113,483	-	-	113,483	
REGION VIII	73,322	-	-	73,322		73,322	-	-	73,322	
REGION X	71,461	-	-	71,461		71,461	-	-	71,461	
REGION XI	73,590	-	-	73,590		73,590	-	-	73,590	
REGION XII	44,871	-	-	44,871		44,871	-	-	44,871	
REGION XIII	45,715	-	-	45,715		45,715	-	-	45,715	
a. Policy Formulation	875,407	281,020	-	1,156,427		875,407	281,020	-	1,156,427	
CAR	30,700	-	-	30,700		30,700	-	-	30,700	
CENTRAL OFFICE	13,227	281,020	-	294,247		13,227	281,020	-	294,247	
NCR	54,500	-	-	54,500		54,500	-	-	54,500	
REGION I	55,020	-	-	55,020		55,020	-	-	55,020	
REGION II	22,636	-	-	22,636		22,636	-	-	22,636	
REGION III	74,326	-	-	74,326		74,326	-	-	74,326	
REGION IVA	99,436	-	-	99,436		99,436	-	-	99,436	
REGION IVB	35,445	-	-	35,445		35,445	-	-	35,445	
REGION IX	68,466	-	-	68,466		68,466	-	-	68,466	
REGION V	96,857	-	-	96,857		96,857	-	-	96,857	
REGION VI	60,898	-	-	60,898		60,898	-	-	60,898	
REGION VII	85,913	-	-	85,913		85,913	-	-	85,913	
REGION VIII	36,107	-	-	36,107		36,107	-	-	36,107	
REGION X	43,379	-	-	43,379		43,379	-	-	43,379	
REGION XI	51,960	-	-	51,960		51,960	-	-	51,960	
REGION XII	23,356	-	-	23,356		23,356	-	-	23,356	
REGION XIII	23,181	-	-	23,181		23,181	-	-	23,181	
b. Subsistence Allowance - Magna Carta Benefits for PHW	60,877	-	-	60,877		60,877	-	-	60,877	
CAR	3,038	-	-	3,038		3,038	-	-	3,038	
CENTRAL OFFICE	287	-	-	287		287	-	-	287	
NCR	3,711	-	-	3,711		3,711	-	-	3,711	
REGION I	4,694	-	-	4,694		4,694	-	-	4,694	

DEPARTMENT OF EDUCATION - OFFICE OF THE SECRETARY

Annex 'A'

SUMMARY OF APPROPRIATIONS UNDER FOR COMPREHENSIVE RELEASE (FCR) THROUGH THE GAA AS AN ALLOTMENT ORDER (GAAAO)

(In Thousand Pesos)

PARTICULARS	FY 2018 GAA (R.A. No. 10964)				For Comprehensive Release (Annex A)			
	PS	MOOE	CO	TOTAL	PS	MOOE	CO	TOTAL
REGION II	2,752	-	-	2,752	2,752	-	-	2,752
REGION III	5,491	-	-	5,491	5,491	-	-	5,491
REGION IVA	5,678	-	-	5,678	5,678	-	-	5,678
REGION IVB	2,503	-	-	2,503	2,503	-	-	2,503
REGION IX	2,627	-	-	2,627	2,627	-	-	2,627
REGION V	5,541	-	-	5,541	5,541	-	-	5,541
REGION VI	4,669	-	-	4,669	4,669	-	-	4,669
REGION VII	3,611	-	-	3,611	3,611	-	-	3,611
REGION VIII	4,669	-	-	4,669	4,669	-	-	4,669
REGION X	3,462	-	-	3,462	3,462	-	-	3,462
REGION XI	2,715	-	-	2,715	2,715	-	-	2,715
REGION XII	2,640	-	-	2,640	2,640	-	-	2,640
REGION XIII	2,789	-	-	2,789	2,789	-	-	2,789
c. Laundry Allowance - Magna Carta Benefits for PHW	8,806	-	-	8,806	8,806	-	-	8,806
CAR	440	-	-	440	440	-	-	440
CENTRAL OFFICE	42	-	-	42	42	-	-	42
NCR	537	-	-	537	537	-	-	537
REGION I	679	-	-	679	679	-	-	679
REGION II	398	-	-	398	398	-	-	398
REGION III	794	-	-	794	794	-	-	794
REGION IVA	821	-	-	821	821	-	-	821
REGION IVB	362	-	-	362	362	-	-	362
REGION IX	380	-	-	380	380	-	-	380
REGION V	801	-	-	801	801	-	-	801
REGION VI	675	-	-	675	675	-	-	675
REGION VII	522	-	-	522	522	-	-	522
REGION VIII	675	-	-	675	675	-	-	675
REGION X	501	-	-	501	501	-	-	501
REGION XI	393	-	-	393	393	-	-	393
REGION XII	382	-	-	382	382	-	-	382
REGION XIII	404	-	-	404	404	-	-	404
d. Hazard Pay - Magna Carta Benefits for PHW	413,579	-	-	413,579	413,579	-	-	413,579
CAR	20,972	-	-	20,972	20,972	-	-	20,972
CENTRAL OFFICE	1,907	-	-	1,907	1,907	-	-	1,907
NCR	25,127	-	-	25,127	25,127	-	-	25,127
REGION I	31,450	-	-	31,450	31,450	-	-	31,450
REGION II	18,502	-	-	18,502	18,502	-	-	18,502
REGION III	37,794	-	-	37,794	37,794	-	-	37,794

DEPARTMENT OF EDUCATION - OFFICE OF THE SECRETARY

SUMMARY OF APPROPRIATIONS UNDER FOR COMPREHENSIVE RELEASE (FCR) THROUGH THE GAA AS AN ALLOTMENT ORDER (GAAAO)

Annex 'A'

(In Thousand Pesos)

PARTICULARS	FY 2018 GAA (R.A. No. 10964)					For Comprehensive Release (Annex A)				
	PS	MOOE	CO	TOTAL		PS	MOOE	CO	TOTAL	
REGION IVA	39,314	-	-	39,314	-	39,314	-	-	39,314	
REGION IVB	17,241	-	-	17,241	-	17,241	-	-	17,241	
REGION IX	17,902	-	-	17,902	-	17,902	-	-	17,902	
REGION V	36,188	-	-	36,188	-	36,188	-	-	36,188	
REGION VI	31,399	-	-	31,399	-	31,399	-	-	31,399	
REGION VII	23,437	-	-	23,437	-	23,437	-	-	23,437	
REGION VIII	31,871	-	-	31,871	-	31,871	-	-	31,871	
REGION X	24,119	-	-	24,119	-	24,119	-	-	24,119	
REGION XI	18,522	-	-	18,522	-	18,522	-	-	18,522	
REGION XII	18,493	-	-	18,493	-	18,493	-	-	18,493	
REGION XIII	19,341	-	-	19,341	-	19,341	-	-	19,341	
<b>Building Partnerships and Linkages Program</b>	<b>8,946</b>	<b>171,751</b>	<b>-</b>	<b>180,697</b>	<b>-</b>	<b>8,946</b>	<b>171,751</b>	<b>-</b>	<b>180,697</b>	
CENTRAL OFFICE	8,946	171,751	-	180,697	-	8,946	171,751	-	180,697	
<b>Legal Service and Development of Education-Related</b>	<b>10,244</b>	<b>68,232</b>	<b>-</b>	<b>78,476</b>	<b>-</b>	<b>10,244</b>	<b>68,232</b>	<b>-</b>	<b>78,476</b>	
<b>Laws and Rules</b>	<b>10,244</b>	<b>68,232</b>	<b>-</b>	<b>78,476</b>	<b>-</b>	<b>10,244</b>	<b>68,232</b>	<b>-</b>	<b>78,476</b>	
CENTRAL OFFICE	10,244	68,232	-	78,476	-	10,244	68,232	-	78,476	
<b>Child Protection Program</b>	<b>-</b>	<b>8,349</b>	<b>-</b>	<b>8,349</b>	<b>-</b>	<b>-</b>	<b>8,349</b>	<b>-</b>	<b>8,349</b>	
CENTRAL OFFICE	-	8,349	-	8,349	-	-	8,349	-	8,349	
<b>Disaster Preparedness and Response Program</b>	<b>3,705</b>	<b>329,938</b>	<b>-</b>	<b>333,643</b>	<b>-</b>	<b>3,705</b>	<b>329,938</b>	<b>-</b>	<b>333,643</b>	
CENTRAL OFFICE	3,705	329,938	-	333,643	-	3,705	329,938	-	333,643	
<b>Organizational and Professional Development for Non-School/CS Personnel</b>	<b>91,858</b>	<b>377,838</b>	<b>-</b>	<b>469,696</b>	<b>-</b>	<b>91,858</b>	<b>377,838</b>	<b>-</b>	<b>469,696</b>	
CAR	4,544	-	-	4,544	-	4,544	-	-	4,544	
CENTRAL OFFICE	15,125	377,838	-	392,963	-	15,125	377,838	-	392,963	
NCR	3,941	-	-	3,941	-	3,941	-	-	3,941	
REGION I	5,136	-	-	5,136	-	5,136	-	-	5,136	
REGION II	5,115	-	-	5,115	-	5,115	-	-	5,115	
REGION III	6,933	-	-	6,933	-	6,933	-	-	6,933	
REGION IVA	6,793	-	-	6,793	-	6,793	-	-	6,793	
REGION IVB	3,965	-	-	3,965	-	3,965	-	-	3,965	
REGION IX	5,308	-	-	5,308	-	5,308	-	-	5,308	
REGION V	4,264	-	-	4,264	-	4,264	-	-	4,264	
REGION VI	5,250	-	-	5,250	-	5,250	-	-	5,250	
REGION VII	5,384	-	-	5,384	-	5,384	-	-	5,384	
REGION VIII	2,972	-	-	2,972	-	2,972	-	-	2,972	
REGION X	3,683	-	-	3,683	-	3,683	-	-	3,683	
REGION XI	5,145	-	-	5,145	-	5,145	-	-	5,145	

DEPARTMENT OF EDUCATION - OFFICE OF THE SECRETARY

SUMMARY OF APPROPRIATIONS UNDER FOR COMPREHENSIVE RELEASE (FCR) THROUGH THE GAA AS AN ALLOTMENT ORDER (GAAAO)

Annex 'A'

(In Thousand Pesos)

PARTICULARS	FY 2018 GAA (R.A. No. 10964)					For Comprehensive Release (Annex A)				
	PS	MOOE	CO	TOTAL		PS	MOOE	CO	TOTAL	
REGION XII	4,668	-	-	4,668	-	4,668	-	-	4,668	
REGION XIII	3,632	-	-	3,632	-	3,632	-	-	3,632	
<b>III. Operations</b>	<b>330,095,414</b>	<b>71,775,382</b>	<b>121,137,167</b>	<b>523,007,963</b>	<b>291,175,366</b>	<b>67,124,929</b>	<b>29,712,272</b>	<b>388,012,567</b>		
<b>EDUCATION POLICY DEVELOPMENT PROGRAM</b>	<b>6,415,918</b>	<b>820,564</b>	<b>-</b>	<b>7,236,482</b>	<b>6,415,918</b>	<b>820,564</b>	<b>-</b>	<b>7,236,482</b>		
<b>National Assessment Systems for Basic Education</b>	<b>19,177</b>	<b>466,047</b>	<b>-</b>	<b>485,224</b>	<b>19,177</b>	<b>466,047</b>	<b>-</b>	<b>485,224</b>		
CENTRAL OFFICE	19,177	466,047	-	485,224	19,177	466,047	-	485,224		
<b>Policy and Research Program</b>	<b>1,331,371</b>	<b>69,468</b>	<b>-</b>	<b>1,400,839</b>	<b>1,331,371</b>	<b>69,468</b>	<b>-</b>	<b>1,400,839</b>		
CAR	59,332	-	-	59,332	59,332	-	-	59,332		
CENTRAL OFFICE	-	69,468	-	69,468	-	69,468	-	69,468		
NCR	156,382	-	-	156,382	156,382	-	-	156,382		
REGION I	85,707	-	-	85,707	85,707	-	-	85,707		
REGION II	55,905	-	-	55,905	55,905	-	-	55,905		
REGION III	128,691	-	-	128,691	128,691	-	-	128,691		
REGION IVA	127,127	-	-	127,127	127,127	-	-	127,127		
REGION IVB	74,371	-	-	74,371	74,371	-	-	74,371		
REGION IX	57,428	-	-	57,428	57,428	-	-	57,428		
REGION V	98,935	-	-	98,935	98,935	-	-	98,935		
REGION VI	121,290	-	-	121,290	121,290	-	-	121,290		
REGION VII	5,056	-	-	5,056	5,056	-	-	5,056		
REGION VIII	49,564	-	-	49,564	49,564	-	-	49,564		
REGION X	91,784	-	-	91,784	91,784	-	-	91,784		
REGION XI	70,431	-	-	70,431	70,431	-	-	70,431		
REGION XII	67,832	-	-	67,832	67,832	-	-	67,832		
REGION XIII	81,536	-	-	81,536	81,536	-	-	81,536		
<b>Basic Education Curriculum</b>	<b>75,699</b>	<b>203,143</b>	<b>-</b>	<b>278,842</b>	<b>75,699</b>	<b>203,143</b>	<b>-</b>	<b>278,842</b>		
CENTRAL OFFICE	75,699	203,143	-	278,842	75,699	203,143	-	278,842		
<b>Curricular programs, learning management models, standards and strategy development</b>	<b>4,988,639</b>	<b>2,147</b>	<b>-</b>	<b>4,990,786</b>	<b>4,988,639</b>	<b>2,147</b>	<b>-</b>	<b>4,990,786</b>		
CAR	177,376	-	-	177,376	177,376	-	-	177,376		
CENTRAL OFFICE	-	2,147	-	2,147	-	2,147	-	2,147		
NCR	341,026	-	-	341,026	341,026	-	-	341,026		
REGION I	303,425	-	-	303,425	303,425	-	-	303,425		
REGION II	222,840	-	-	222,840	222,840	-	-	222,840		
REGION III	457,800	-	-	457,800	457,800	-	-	457,800		
REGION IVA	510,729	-	-	510,729	510,729	-	-	510,729		
REGION IVB	184,780	-	-	184,780	184,780	-	-	184,780		
REGION IX	229,362	-	-	229,362	229,362	-	-	229,362		
REGION V	374,088	-	-	374,088	374,088	-	-	374,088		

**DEPARTMENT OF EDUCATION - OFFICE OF THE SECRETARY**  
**SUMMARY OF APPROPRIATIONS UNDER FOR COMPREHENSIVE RELEASE (FCR) THROUGH THE GAA AS AN ALLOTMENT ORDER (GAAAO)**  
(In Thousand Pesos)

Annex 'A'

PARTICULARS	FY 2018 GAA (R.A. No. 10964)					For Comprehensive Release (Annex A)				
	PS	MOOE	CO	TOTAL		PS	MOOE	CO	TOTAL	
REGION VI	428,654	-	-	428,654	-	428,654	-	-	428,654	
REGION VII	484,729	-	-	484,729	-	484,729	-	-	484,729	
REGION VIII	294,782	-	-	294,782	-	294,782	-	-	294,782	
REGION X	287,693	-	-	287,693	-	287,693	-	-	287,693	
REGION XI	236,792	-	-	236,792	-	236,792	-	-	236,792	
REGION XII	216,410	-	-	216,410	-	216,410	-	-	216,410	
REGION XIII	238,153	-	-	238,153	-	238,153	-	-	238,153	
<b>Development and Promotion of Campus Journalism</b>	-	9,608	-	9,608	-	9,608	-	-	9,608	
CENTRAL OFFICE	-	9,608	-	9,608	-	9,608	-	-	9,608	
<b>National Literacy Policies and Programs</b>	1,032	13,664	-	14,696	-	1,032	13,664	-	14,696	
CENTRAL OFFICE	1,032	13,664	-	14,696	-	1,032	13,664	-	14,696	
<b>Early Language Literacy and Numeracy</b>	-	56,487	-	56,487	-	-	56,487	-	56,487	
CAR	-	1,200	-	1,200	-	-	1,200	-	1,200	
CENTRAL OFFICE	-	3,687	-	3,687	-	-	3,687	-	3,687	
NCR	-	2,400	-	2,400	-	-	2,400	-	2,400	
REGION I	-	4,800	-	4,800	-	-	4,800	-	4,800	
REGION II	-	4,800	-	4,800	-	-	4,800	-	4,800	
REGION III	-	4,800	-	4,800	-	-	4,800	-	4,800	
REGION IVA	-	4,800	-	4,800	-	-	4,800	-	4,800	
REGION IVB	-	2,400	-	2,400	-	-	2,400	-	2,400	
REGION IX	-	1,200	-	1,200	-	-	1,200	-	1,200	
REGION V	-	1,200	-	1,200	-	-	1,200	-	1,200	
REGION VI	-	4,800	-	4,800	-	-	4,800	-	4,800	
REGION VII	-	3,600	-	3,600	-	-	3,600	-	3,600	
REGION VIII	-	1,200	-	1,200	-	-	1,200	-	1,200	
REGION X	-	4,800	-	4,800	-	-	4,800	-	4,800	
REGION XI	-	4,800	-	4,800	-	-	4,800	-	4,800	
REGION XII	-	4,800	-	4,800	-	-	4,800	-	4,800	
REGION XIII	-	1,200	-	1,200	-	-	1,200	-	1,200	
<b>BASIC EDUCATION INPUTS PROGRAM</b>	38,931,838	9,116,578	121,032,167	169,080,583	11,790	4,466,125	29,607,272	34,085,187		
<b>Improvement and Acquisition of School Sites</b>	-	11,453	65,000	76,453	-	11,453	65,000	76,453		
CENTRAL OFFICE	-	11,453	65,000	76,453	-	11,453	65,000	76,453		
<b>New School Personnel Positions</b>	38,920,048	237,068	-	39,157,116	-	-	-	-		
CAR	489,420	-	-	489,420	-	-	-	-		
CENTRAL OFFICE	2,193,340	237,068	-	2,430,408	-	-	-	-		
NCR	4,300,270	-	-	4,300,270	-	-	-	-		
REGION I	1,311,613	-	-	1,311,613	-	-	-	-		

**DEPARTMENT OF EDUCATION - OFFICE OF THE SECRETARY**  
**SUMMARY OF APPROPRIATIONS UNDER FOR COMPREHENSIVE RELEASE (FCR) THROUGH THE GAA AS AN ALLOTMENT ORDER (GAAAO)**  
(In Thousand Pesos) Annex 'A'

PARTICULARS	FY 2018 GAA (R.A. No. 10964)				For Comprehensive Release (Annex A)			
	PS	MOOE	CO	TOTAL	PS	MOOE	CO	TOTAL
REGION II	1,284,760	-	-	1,284,760	-	-	-	-
REGION III	3,786,772	-	-	3,786,772	-	-	-	-
REGION IVA	5,342,816	-	-	5,342,816	-	-	-	-
REGION IVB	1,751,989	-	-	1,751,989	-	-	-	-
REGION IX	1,334,000	-	-	1,334,000	-	-	-	-
REGION V	2,689,319	-	-	2,689,319	-	-	-	-
REGION VI	2,226,497	-	-	2,226,497	-	-	-	-
REGION VII	3,810,170	-	-	3,810,170	-	-	-	-
REGION VIII	2,146,764	-	-	2,146,764	-	-	-	-
REGION X	1,651,734	-	-	1,651,734	-	-	-	-
REGION XI	2,164,388	-	-	2,164,388	-	-	-	-
REGION XII	1,380,953	-	-	1,380,953	-	-	-	-
REGION XIII	1,055,243	-	-	1,055,243	-	-	-	-
a. Lumpsum for Creation of New Teaching Positions	22,174,795	-	-	22,174,795	-	-	-	-
CAR	191,878	-	-	191,878	-	-	-	-
CENTRAL OFFICE	2,180,318	-	-	2,180,318	-	-	-	-
NCR	1,152,927	-	-	1,152,927	-	-	-	-
REGION I	772,788	-	-	772,788	-	-	-	-
REGION II	492,551	-	-	492,551	-	-	-	-
REGION III	2,261,745	-	-	2,261,745	-	-	-	-
REGION IVA	3,732,834	-	-	3,732,834	-	-	-	-
REGION IVB	1,134,676	-	-	1,134,676	-	-	-	-
REGION IX	814,294	-	-	814,294	-	-	-	-
REGION V	1,644,771	-	-	1,644,771	-	-	-	-
REGION VI	1,547,318	-	-	1,547,318	-	-	-	-
REGION VII	1,626,907	-	-	1,626,907	-	-	-	-
REGION VIII	1,063,650	-	-	1,063,650	-	-	-	-
REGION X	923,933	-	-	923,933	-	-	-	-
REGION XI	1,197,557	-	-	1,197,557	-	-	-	-
REGION XII	801,448	-	-	801,448	-	-	-	-
REGION XIII	635,200	-	-	635,200	-	-	-	-
b. Lumpsum for Filling-up of Teaching Positions	16,745,253	-	-	16,745,253	-	-	-	-
CAR	297,542	-	-	297,542	-	-	-	-
CENTRAL OFFICE	13,022	-	-	13,022	-	-	-	-
NCR	3,147,343	-	-	3,147,343	-	-	-	-
REGION I	538,825	-	-	538,825	-	-	-	-
REGION II	792,209	-	-	792,209	-	-	-	-
REGION III	1,525,027	-	-	1,525,027	-	-	-	-

DEPARTMENT OF EDUCATION - OFFICE OF THE SECRETARY

Annex 'A'

SUMMARY OF APPROPRIATIONS UNDER FOR COMPREHENSIVE RELEASE (FCR) THROUGH THE GAA AS AN ALLOTMENT ORDER (GAAAO)

(In Thousand Pesos)

PARTICULARS	FY 2018 GAA (R.A. No. 10964)				For Comprehensive Release (Annex A)			
	PS	MOOE	CO	TOTAL	PS	MOOE	CO	TOTAL
REGION IVA	1,609,982	-	-	1,609,982	-	-	-	-
REGION IVB	617,313	-	-	617,313	-	-	-	-
REGION IX	519,706	-	-	519,706	-	-	-	-
REGION V	1,044,548	-	-	1,044,548	-	-	-	-
REGION VI	679,179	-	-	679,179	-	-	-	-
REGION VII	2,183,263	-	-	2,183,263	-	-	-	-
REGION VIII	1,083,114	-	-	1,083,114	-	-	-	-
REGION X	727,801	-	-	727,801	-	-	-	-
REGION XI	966,831	-	-	966,831	-	-	-	-
REGION XII	579,505	-	-	579,505	-	-	-	-
REGION XIII	420,043	-	-	420,043	-	-	-	-
c. Grant of Cash Allowance	-	237,068	-	237,068	-	-	-	-
CENTRAL OFFICE	-	237,068	-	237,068	-	-	-	-
<b>Learning Tools and Equipment</b>	-	-	7,800,516	7,800,516	-	-	7,800,516	7,800,516
CENTRAL OFFICE	-	-	7,800,516	7,800,516	-	-	7,800,516	7,800,516
Science and Mathematics Equipment	-	-	3,199,904	3,199,904	-	-	3,199,904	3,199,904
Tech-Voc Equipment	-	-	4,600,612	4,600,612	-	-	4,600,612	4,600,612
<b>Textbooks and other Instructional Materials</b>	-	2,990,831	-	2,990,831	-	2,990,831	-	2,990,831
CENTRAL OFFICE	-	2,990,831	-	2,990,831	-	2,990,831	-	2,990,831
<b>Computerization Program</b>	11,790	1,463,841	7,183,749	8,659,380	11,790	1,463,841	7,183,749	8,659,380
CENTRAL OFFICE	11,790	1,463,841	7,183,749	8,659,380	11,790	1,463,841	7,183,749	8,659,380
<b>Basic Education Facilities</b>	-	3,478,385	101,982,902	105,461,287	-	-	12,558,007	12,558,007
CENTRAL OFFICE	-	3,478,385	101,982,902	105,461,287	-	-	12,558,007	12,558,007
a. Construction, replacement, and completion of kindergarten, elementary and secondary school buildings and technical vocational laboratories	-	-	84,783,632	84,783,632	-	-	-	-
b. Engineering and Administrative Overhead (EAO)	-	-	426,048	426,048	-	-	-	-
c. Repair and rehabilitation of school buildings	-	-	6,800,000	6,800,000	-	-	5,554,785	5,554,785
d. School desks, furniture and fixtures	-	3,478,385	-	3,478,385	-	-	-	-
e. PSIP Amortization	-	-	1,959,377	1,959,377	-	-	1,959,377	1,959,377
f. Annual payment of school buildings constructed by NHA	-	-	43,845	43,845	-	-	43,845	43,845
g. Electrification of unenergized Schools and modernization of electrical system of on-grid schools	-	-	2,970,000	2,970,000	-	-	-	-
h. Preliminary Detailed Engineering Fund	-	-	5,000,000	5,000,000	-	-	5,000,000	5,000,000
<b>Conservation and restoration of Gabaldon and other heritage school buildings</b>	-	-	2,000,000	2,000,000	-	-	-	-
CENTRAL OFFICE	-	-	2,000,000	2,000,000	-	-	-	-

**DEPARTMENT OF EDUCATION - OFFICE OF THE SECRETARY**  
**SUMMARY OF APPROPRIATIONS UNDER FOR COMPREHENSIVE RELEASE (FCR) THROUGH THE GAA AS AN ALLOTMENT ORDER (GAAAO)**  
(In Thousand Pesos)

Annex 'A'

PARTICULARS	FY 2018 GAA (R.A. No. 10964)				For Comprehensive Release (Annex A)			
	PS	MOOE	CO	TOTAL	PS	MOOE	CO	TOTAL
310200100008000	-	435,000	-	435,000	-	-	-	-
CENTRAL OFFICE	-	435,000	-	435,000	-	-	-	-
310200100009000	-	500,000	-	500,000	-	-	-	-
Nationwide Audit of School Facilities	-	500,000	-	500,000	-	-	-	-
CENTRAL OFFICE	-	500,000	-	500,000	-	-	-	-
310200100010000	-	-	2,000,000	2,000,000	-	-	2,000,000	2,000,000
Quick Response Fund	-	-	2,000,000	2,000,000	-	-	2,000,000	2,000,000
CENTRAL OFFICE	-	-	2,000,000	2,000,000	-	-	2,000,000	2,000,000
310300000000000	-	1,251,895	-	1,251,895	-	1,251,895	-	1,251,895
<b>INCLUSIVE EDUCATION PROGRAM</b>	-	1,251,895	-	1,251,895	-	1,251,895	-	1,251,895
310300100001000	-	83,026	-	83,026	-	83,026	-	83,026
<b>Multigrade Education</b>	-	83,026	-	83,026	-	83,026	-	83,026
CAR	-	4,808	-	4,808	-	4,808	-	4,808
CENTRAL OFFICE	-	9,732	-	9,732	-	9,732	-	9,732
REGION I	-	3,848	-	3,848	-	3,848	-	3,848
REGION II	-	4,823	-	4,823	-	4,823	-	4,823
REGION III	-	2,604	-	2,604	-	2,604	-	2,604
REGION IVA	-	4,030	-	4,030	-	4,030	-	4,030
REGION IVB	-	4,808	-	4,808	-	4,808	-	4,808
REGION IX	-	4,816	-	4,816	-	4,816	-	4,816
REGION V	-	6,008	-	6,008	-	6,008	-	6,008
REGION VI	-	5,190	-	5,190	-	5,190	-	5,190
REGION VII	-	6,231	-	6,231	-	6,231	-	6,231
REGION VIII	-	9,791	-	9,791	-	9,791	-	9,791
REGION X	-	4,808	-	4,808	-	4,808	-	4,808
REGION XI	-	3,339	-	3,339	-	3,339	-	3,339
REGION XII	-	3,382	-	3,382	-	3,382	-	3,382
REGION XIII	-	4,808	-	4,808	-	4,808	-	4,808
310300100002000	-	130,433	-	130,433	-	130,433	-	130,433
<b>Indigenous Peoples Education (IPed) Program</b>	-	130,433	-	130,433	-	130,433	-	130,433
CAR	-	10,457	-	10,457	-	10,457	-	10,457
CENTRAL OFFICE	-	22,161	-	22,161	-	22,161	-	22,161
REGION I	-	5,564	-	5,564	-	5,564	-	5,564
REGION II	-	10,387	-	10,387	-	10,387	-	10,387
REGION III	-	8,554	-	8,554	-	8,554	-	8,554
REGION IVA	-	2,648	-	2,648	-	2,648	-	2,648
REGION IVB	-	5,953	-	5,953	-	5,953	-	5,953
REGION IX	-	7,509	-	7,509	-	7,509	-	7,509
REGION V	-	2,528	-	2,528	-	2,528	-	2,528
REGION VI	-	4,927	-	4,927	-	4,927	-	4,927
REGION VIII	-	3,285	-	3,285	-	3,285	-	3,285
REGION VIII	-	1,433	-	1,433	-	1,433	-	1,433
REGION X	-	15,266	-	15,266	-	15,266	-	15,266

DEPARTMENT OF EDUCATION - OFFICE OF THE SECRETARY  
SUMMARY OF APPROPRIATIONS UNDER FOR COMPREHENSIVE RELEASE (FCR) THROUGH THE GAA AS AN ALLOTMENT ORDER (GAAAO)  
(In Thousand Pesos)

Annex 'A'

PARTICULARS	FY 2018 GAA (R.A. No. 10964)					For Comprehensive Release (Annex A)				
	PS	MOOE	CO	TOTAL		PS	MOOE	CO	TOTAL	
310300100003000	REGION XI	10,914	-	-	10,914	-	10,914	-	10,914	
	REGION XII	-	10,844	-	10,844	-	10,844	-	10,844	
	REGION XIII	-	8,003	-	8,003	-	8,003	-	8,003	
	<b>Flexible Learning Options (ADM/AL/SEI/E)</b>	-	533,436	-	533,436	-	533,436	-	533,436	
	CENTRAL OFFICE	-	533,436	-	533,436	-	533,436	-	533,436	
310300100004000	<b>Madrasah Education Program</b>	-	505,000	-	505,000	-	505,000	-	505,000	
	CENTRAL OFFICE	-	505,000	-	505,000	-	505,000	-	505,000	
3104000000000000	<b>SUPPORT TO SCHOOLS AND LEARNERS PROGRAM</b>	284,733,034	57,180,000	105,000	342,018,034	284,733,034	57,180,000	105,000	342,018,034	
310400100001000	<b>School-Based Feeding Program (SBFP)</b>	-	5,302,319	-	5,302,319	-	5,302,319	-	5,302,319	
	CAR	-	14,550	-	14,550	-	14,550	-	14,550	
	CENTRAL OFFICE	-	1,597,265	-	1,597,265	-	1,597,265	-	1,597,265	
	NCR	-	366,924	-	366,924	-	366,924	-	366,924	
	REGION I	-	194,571	-	194,571	-	194,571	-	194,571	
	REGION II	-	97,053	-	97,053	-	97,053	-	97,053	
	REGION III	-	342,595	-	342,595	-	342,595	-	342,595	
	REGION IVA	-	577,184	-	577,184	-	577,184	-	577,184	
	REGION IVB	-	175,008	-	175,008	-	175,008	-	175,008	
	REGION IX	-	157,220	-	157,220	-	157,220	-	157,220	
	REGION V	-	348,913	-	348,913	-	348,913	-	348,913	
	REGION VI	-	374,743	-	374,743	-	374,743	-	374,743	
	REGION VII	-	259,876	-	259,876	-	259,876	-	259,876	
	REGION VIII	-	201,234	-	201,234	-	201,234	-	201,234	
	REGION X	-	159,196	-	159,196	-	159,196	-	159,196	
	REGION XI	-	167,659	-	167,659	-	167,659	-	167,659	
	REGION XII	-	180,148	-	180,148	-	180,148	-	180,148	
	REGION XIII	-	88,180	-	88,180	-	88,180	-	88,180	
310400100002000	<b>Operation of Schools - Elementary (Kinder to Grade 6)</b>	181,268,428	12,015,247	105,000	193,388,675	181,268,428	12,015,247	105,000	193,388,675	
	CAR	4,298,107	320,057	4,000	4,622,164	4,298,107	320,057	4,000	4,622,164	
	NCR	13,821,576	738,500	8,000	14,568,076	13,821,576	738,500	8,000	14,568,076	
	REGION I	10,860,731	699,021	7,000	11,566,752	10,860,731	699,021	7,000	11,566,752	
	REGION II	8,034,910	550,021	4,500	8,589,431	8,034,910	550,021	4,500	8,589,431	
	REGION III	18,132,128	1,173,298	10,000	19,315,426	18,132,128	1,173,298	10,000	19,315,426	
	REGION IVA	19,728,712	1,300,348	9,500	21,038,560	19,728,712	1,300,348	9,500	21,038,560	
	REGION IVB	7,197,003	508,857	3,500	7,709,360	7,197,003	508,857	3,500	7,709,360	
	REGION IX	8,716,537	596,931	4,000	9,317,468	8,716,537	596,931	4,000	9,317,468	

DEPARTMENT OF EDUCATION - OFFICE OF THE SECRETARY

SUMMARY OF APPROPRIATIONS UNDER FOR COMPREHENSIVE RELEASE (FCR) THROUGH THE GAA AS AN ALLOTMENT ORDER (GAAAO)

Annex 'A'

(In Thousand Pesos)

PARTICULARS	FY 2018 GAA (R.A. No. 10964)					For Comprehensive Release (Annex A)				
	PS	MOOE	CO	TOTAL		PS	MOOE	CO	TOTAL	
REGION V	14,097,761	949,414	6,500	15,053,675		14,097,761	949,414	6,500	15,053,675	
REGION VI	15,978,871	1,057,776	9,000	17,045,647		15,978,871	1,057,776	9,000	17,045,647	
REGION VII	14,466,110	960,707	9,500	15,436,317		14,466,110	960,707	9,500	15,436,317	
REGION VIII	11,812,056	849,978	6,500	12,668,534		11,812,056	849,978	6,500	12,668,534	
REGION X	9,563,524	652,633	7,000	10,223,157		9,563,524	652,633	7,000	10,223,157	
REGION XI	9,116,607	619,537	5,500	9,741,644		9,116,607	619,537	5,500	9,741,644	
REGION XII	8,883,866	592,132	4,500	9,480,498		8,883,866	592,132	4,500	9,480,498	
REGION XIII	6,559,929	446,037	6,000	7,011,966		6,559,929	446,037	6,000	7,011,966	
<b>Operation of Schools - Junior High School (Grade 7 to Grade 10)</b>	<b>89,149,396</b>	<b>8,336,622</b>	<b>-</b>	<b>97,486,018</b>		<b>89,149,396</b>	<b>8,336,622</b>	<b>-</b>	<b>97,486,018</b>	
CAR	1,840,539	172,603	-	2,013,142		1,840,539	172,603	-	2,013,142	
NCR	10,406,734	841,558	-	11,248,292		10,406,734	841,558	-	11,248,292	
REGION I	5,591,634	483,984	-	6,075,618		5,591,634	483,984	-	6,075,618	
REGION II	3,736,671	324,238	-	4,060,909		3,736,671	324,238	-	4,060,909	
REGION III	9,971,582	876,107	-	10,847,689		9,971,582	876,107	-	10,847,689	
REGION IVA	10,962,508	1,013,234	-	11,975,742		10,962,508	1,013,234	-	11,975,742	
REGION IVB	3,246,079	318,988	-	3,565,067		3,246,079	318,988	-	3,565,067	
REGION IX	3,619,598	343,349	-	3,962,947		3,619,598	343,349	-	3,962,947	
REGION V	6,418,569	624,341	-	7,042,910		6,418,569	624,341	-	7,042,910	
REGION VI	7,657,263	715,463	-	8,372,726		7,657,263	715,463	-	8,372,726	
REGION VII	6,731,012	711,375	-	7,442,387		6,731,012	711,375	-	7,442,387	
REGION VIII	4,449,551	469,869	-	4,919,420		4,449,551	469,869	-	4,919,420	
REGION X	3,720,305	363,361	-	4,083,666		3,720,305	363,361	-	4,083,666	
REGION XI	3,968,646	401,340	-	4,369,986		3,968,646	401,340	-	4,369,986	
REGION XII	3,956,656	393,412	-	4,350,068		3,956,656	393,412	-	4,350,068	
REGION XIII	2,872,049	283,400	-	3,155,449		2,872,049	283,400	-	3,155,449	
<b>Operation of Schools - Senior High School (Grade 11 to Grade 12)</b>	<b>11,605,491</b>	<b>2,536,600</b>	<b>-</b>	<b>14,142,091</b>		<b>11,605,491</b>	<b>2,536,600</b>	<b>-</b>	<b>14,142,091</b>	
CAR	209,601	-	-	209,601		209,601	-	-	209,601	
CENTRAL OFFICE	-	2,536,600	-	2,536,600		-	2,536,600	-	2,536,600	
NCR	523,553	-	-	523,553		523,553	-	-	523,553	
REGION I	961,610	-	-	961,610		961,610	-	-	961,610	
REGION II	287,615	-	-	287,615		287,615	-	-	287,615	
REGION III	1,535,418	-	-	1,535,418		1,535,418	-	-	1,535,418	
REGION IVA	1,520,269	-	-	1,520,269		1,520,269	-	-	1,520,269	
REGION IVB	449,322	-	-	449,322		449,322	-	-	449,322	
REGION IX	391,468	-	-	391,468		391,468	-	-	391,468	

**DEPARTMENT OF EDUCATION - OFFICE OF THE SECRETARY**

**SUMMARY OF APPROPRIATIONS UNDER FOR COMPREHENSIVE RELEASE (FCR) THROUGH THE GAA AS AN ALLOTMENT ORDER (GAAAO)**

Annex 'A'

(In Thousand Pesos)

PARTICULARS	FY 2018 GAA (R.A. No. 10964)				For Comprehensive Release (Annex A)			
	PS	MOOE	CO	TOTAL	PS	MOOE	CO	TOTAL
REGION V	1,059,929	-	-	1,059,929	1,059,929	-	-	1,059,929
REGION VI	1,160,740	-	-	1,160,740	1,160,740	-	-	1,160,740
REGION VII	634,326	-	-	634,326	634,326	-	-	634,326
REGION VIII	565,282	-	-	565,282	565,282	-	-	565,282
REGION X	469,277	-	-	469,277	469,277	-	-	469,277
REGION XI	715,094	-	-	715,094	715,094	-	-	715,094
REGION XII	653,059	-	-	653,059	653,059	-	-	653,059
REGION XIII	468,928	-	-	468,928	468,928	-	-	468,928
<b>Operational Requirements of Sports Academy and Training Center</b>	-	7,500	-	7,500	-	7,500	-	7,500
CENTRAL OFFICE	-	7,500	-	7,500	-	7,500	-	7,500
310400100009000	-	7,500	-	7,500	-	7,500	-	7,500
<b>Government Assistance and Subsidies - ESC Program for Private JHS (per RA 8545)</b>	-	10,673,583	-	10,673,583	-	10,673,583	-	10,673,583
CENTRAL OFFICE	-	10,673,583	-	10,673,583	-	10,673,583	-	10,673,583
310400100006000	-	10,673,583	-	10,673,583	-	10,673,583	-	10,673,583
<b>Government Assistance and Subsidies - Voucher Program for Private SHS (per RA 10533)</b>	-	13,692,180	-	13,692,180	-	13,692,180	-	13,692,180
CENTRAL OFFICE	-	13,692,180	-	13,692,180	-	13,692,180	-	13,692,180
310400100007000	-	13,692,180	-	13,692,180	-	13,692,180	-	13,692,180
<b>Government Assistance and Subsidies - Voucher Program for Non-DepEd Public School (per RA 10533)</b>	-	742,454	-	742,454	-	742,454	-	742,454
CENTRAL OFFICE	-	742,454	-	742,454	-	742,454	-	742,454
310400100008000	-	742,454	-	742,454	-	742,454	-	742,454
<b>Joint Delivery Voucher for SHS TVL Specializations</b>	-	1,159,960	-	1,159,960	-	1,159,960	-	1,159,960
CENTRAL OFFICE	-	1,159,960	-	1,159,960	-	1,159,960	-	1,159,960
3104001000010000	-	1,159,960	-	1,159,960	-	1,159,960	-	1,159,960
<b>Implementation of the Grant of Cash allowance, Hardship Pay, Equivalent Record Form (ERF), Conversion to Master Teacher (MT) and Reclassification of Positions</b>	2,709,719	2,713,535	-	5,423,254	2,709,719	2,713,535	-	5,423,254
CAR	143,821	20,615	-	164,436	143,821	20,615	-	164,436
CENTRAL OFFICE	-	1,731,472	-	1,731,472	-	1,731,472	-	1,731,472
NCR	33,441	97,222	-	130,663	33,441	97,222	-	130,663
REGION I	163,459	55,406	-	218,865	163,459	55,406	-	218,865
REGION II	179,205	38,925	-	218,130	179,205	38,925	-	218,130
REGION III	133,101	100,785	-	233,886	133,101	100,785	-	233,886
REGION IVA	112,049	115,881	-	227,930	112,049	115,881	-	227,930
REGION IVB	202,711	37,123	-	239,834	202,711	37,123	-	239,834
REGION IX	198,490	43,577	-	242,067	198,490	43,577	-	242,067

DEPARTMENT OF EDUCATION - OFFICE OF THE SECRETARY  
SUMMARY OF APPROPRIATIONS UNDER FOR COMPREHENSIVE RELEASE (FCR) THROUGH THE GAA AS AN ALLOTMENT ORDER (GAAAO)  
(In Thousand Pesos)

Annex 'A'

PARTICULARS	FY 2018 GAA (R.A. No. 10964)					For Comprehensive Release (Annex A)				
	PS	MOOE	CO	TOTAL	PS	MOOE	CO	TOTAL		
REGION V	251,692	74,889	-	326,581	251,692	74,889	-	326,581		
REGION VI	224,246	85,064	-	309,310	224,246	85,064	-	309,310		
REGION VII	177,152	78,227	-	255,379	177,152	78,227	-	255,379		
REGION VIII	233,129	59,903	-	293,032	233,129	59,903	-	293,032		
REGION X	198,806	47,673	-	246,479	198,806	47,673	-	246,479		
REGION XI	130,176	47,591	-	177,767	130,176	47,591	-	177,767		
REGION XII	103,952	46,183	-	150,135	103,952	46,183	-	150,135		
REGION XIII	224,289	32,999	-	257,288	224,289	32,999	-	257,288		
a. Salary Upgrading due to Equivalent Record Forms (ERFs)	271,272	-	-	271,272	271,272	-	-	271,272		
CAR	17,793	-	-	17,793	17,793	-	-	17,793		
NCR	10,000	-	-	10,000	10,000	-	-	10,000		
REGION I	50,178	-	-	50,178	50,178	-	-	50,178		
REGION II	47,795	-	-	47,795	47,795	-	-	47,795		
REGION III	29,757	-	-	29,757	29,757	-	-	29,757		
REGION IVA	7,600	-	-	7,600	7,600	-	-	7,600		
REGION IVB	10,395	-	-	10,395	10,395	-	-	10,395		
REGION IX	16,849	-	-	16,849	16,849	-	-	16,849		
REGION V	15,000	-	-	15,000	15,000	-	-	15,000		
REGION VI	25,241	-	-	25,241	25,241	-	-	25,241		
REGION VII	2,495	-	-	2,495	2,495	-	-	2,495		
REGION VIII	9,457	-	-	9,457	9,457	-	-	9,457		
REGION X	16,511	-	-	16,511	16,511	-	-	16,511		
REGION XI	3,537	-	-	3,537	3,537	-	-	3,537		
REGION XII	5,000	-	-	5,000	5,000	-	-	5,000		
REGION XIII	3,664	-	-	3,664	3,664	-	-	3,664		
b. Conversion to Master Teachers (MTs)	160,529	-	-	160,529	160,529	-	-	160,529		
CAR	1,145	-	-	1,145	1,145	-	-	1,145		
NCR	5,000	-	-	5,000	5,000	-	-	5,000		
REGION I	1,000	-	-	1,000	1,000	-	-	1,000		
REGION II	19,686	-	-	19,686	19,686	-	-	19,686		
REGION III	30,263	-	-	30,263	30,263	-	-	30,263		
REGION IVA	3,900	-	-	3,900	3,900	-	-	3,900		
REGION IVB	4,158	-	-	4,158	4,158	-	-	4,158		
REGION IX	10,746	-	-	10,746	10,746	-	-	10,746		
REGION V	5,603	-	-	5,603	5,603	-	-	5,603		
REGION VI	28,563	-	-	28,563	28,563	-	-	28,563		
REGION VII	1,700	-	-	1,700	1,700	-	-	1,700		

**DEPARTMENT OF EDUCATION - OFFICE OF THE SECRETARY**  
**SUMMARY OF APPROPRIATIONS UNDER FOR COMPREHENSIVE RELEASE (FCR) THROUGH THE GAA AS AN ALLOTMENT ORDER (GAAAO)**  
(In Thousand Pesos)

Annex 'A'

PARTICULARS	FY 2018 GAA (R.A. No. 10964)					For Comprehensive Release (Annex A)				
	PS	MOOE	CO	TOTAL		PS	MOOE	CO	TOTAL	
REGION VIII	5,159	-	-	5,159		5,159	-	-	5,159	
REGION X	21,580	-	-	21,580		21,580	-	-	21,580	
REGION XI	4,244	-	-	4,244		4,244	-	-	4,244	
REGION XII	5,000	-	-	5,000		5,000	-	-	5,000	
REGION XIII	12,782	-	-	12,782		12,782	-	-	12,782	
c. Salary Upgrading due to Reclassification of Positions	125,756	-	-	125,756		125,756	-	-	125,756	
CAR	1,100	-	-	1,100		1,100	-	-	1,100	
NCR	14,294	-	-	14,294		14,294	-	-	14,294	
REGION I	10,000	-	-	10,000		10,000	-	-	10,000	
REGION II	4,788	-	-	4,788		4,788	-	-	4,788	
REGION III	9,464	-	-	9,464		9,464	-	-	9,464	
REGION IVA	17,603	-	-	17,603		17,603	-	-	17,603	
REGION IVB	6,230	-	-	6,230		6,230	-	-	6,230	
REGION IX	4,593	-	-	4,593		4,593	-	-	4,593	
REGION V	5,658	-	-	5,658		5,658	-	-	5,658	
REGION VI	11,035	-	-	11,035		11,035	-	-	11,035	
REGION VII	20,597	-	-	20,597		20,597	-	-	20,597	
REGION VIII	2,575	-	-	2,575		2,575	-	-	2,575	
REGION X	2,498	-	-	2,498		2,498	-	-	2,498	
REGION XI	6,366	-	-	6,366		6,366	-	-	6,366	
REGION XII	2,201	-	-	2,201		2,201	-	-	2,201	
REGION XIII	6,754	-	-	6,754		6,754	-	-	6,754	
d. Special Hardship Allowance	2,152,162	-	-	2,152,162		2,152,162	-	-	2,152,162	
CAR	123,783	-	-	123,783		123,783	-	-	123,783	
NCR	4,147	-	-	4,147		4,147	-	-	4,147	
REGION I	102,281	-	-	102,281		102,281	-	-	102,281	
REGION II	106,936	-	-	106,936		106,936	-	-	106,936	
REGION III	63,617	-	-	63,617		63,617	-	-	63,617	
REGION IVA	82,946	-	-	82,946		82,946	-	-	82,946	
REGION IVB	181,928	-	-	181,928		181,928	-	-	181,928	
REGION IX	166,302	-	-	166,302		166,302	-	-	166,302	
REGION V	225,431	-	-	225,431		225,431	-	-	225,431	
REGION VI	159,407	-	-	159,407		159,407	-	-	159,407	
REGION VII	152,360	-	-	152,360		152,360	-	-	152,360	
REGION VIII	215,938	-	-	215,938		215,938	-	-	215,938	
REGION X	158,217	-	-	158,217		158,217	-	-	158,217	
REGION XI	116,029	-	-	116,029		116,029	-	-	116,029	
REGION XII	91,751	-	-	91,751		91,751	-	-	91,751	

**DEPARTMENT OF EDUCATION - OFFICE OF THE SECRETARY**  
**SUMMARY OF APPROPRIATIONS UNDER FOR COMPREHENSIVE RELEASE (FCR) THROUGH THE GAA AS AN ALLOTMENT ORDER (GAAAO)**  
(In Thousand Pesos)

Annex A

PARTICULARS	FY 2018 GAA (R.A. No. 10964)					For Comprehensive Release (Annex A)				
	PS	MOOE	CO	TOTAL		PS	MOOE	CO	TOTAL	
REGION XIII	201,089	-	-	201,089	-	201,089	-	-	201,089	
e. Grant of Cash Allowance	-	2,713,535	-	2,713,535	-	-	2,713,535	-	2,713,535	
CAR	-	20,615	-	20,615	-	-	20,615	-	20,615	
CENTRAL OFFICE	-	1,731,472	-	1,731,472	-	1,731,472	-	-	1,731,472	
NCR	-	97,222	-	97,222	-	-	97,222	-	97,222	
REGION I	-	55,406	-	55,406	-	-	55,406	-	55,406	
REGION II	-	38,925	-	38,925	-	-	38,925	-	38,925	
REGION III	-	100,785	-	100,785	-	-	100,785	-	100,785	
REGION IVA	-	115,881	-	115,881	-	-	115,881	-	115,881	
REGION IVB	-	37,123	-	37,123	-	-	37,123	-	37,123	
REGION IX	-	43,577	-	43,577	-	-	43,577	-	43,577	
REGION V	-	74,889	-	74,889	-	-	74,889	-	74,889	
REGION VI	-	85,064	-	85,064	-	-	85,064	-	85,064	
REGION VII	-	78,227	-	78,227	-	-	78,227	-	78,227	
REGION VIII	-	59,903	-	59,903	-	-	59,903	-	59,903	
REGION X	-	47,673	-	47,673	-	-	47,673	-	47,673	
REGION XI	-	47,591	-	47,591	-	-	47,591	-	47,591	
REGION XII	-	46,183	-	46,183	-	-	46,183	-	46,183	
REGION XIII	-	32,999	-	32,999	-	-	32,999	-	32,999	
<b>EDUCATION HUMAN RESOURCE DEVELOPMENT</b>	<b>14,624</b>	<b>3,406,345</b>	<b>-</b>	<b>3,420,969</b>	<b>-</b>	<b>14,624</b>	<b>3,406,345</b>	<b>-</b>	<b>3,420,969</b>	
Human Resource Development for Personnel in Schools and Learning Centers	12,212	3,400,549	-	3,412,761	-	12,212	3,400,549	-	3,412,761	
CAR	-	18,957	-	18,957	-	-	18,957	-	18,957	
CENTRAL OFFICE	12,212	2,722,983	-	2,735,195	-	12,212	2,722,983	-	2,735,195	
NCR	-	39,996	-	39,996	-	-	39,996	-	39,996	
REGION I	-	38,466	-	38,466	-	-	38,466	-	38,466	
REGION II	-	31,425	-	31,425	-	-	31,425	-	31,425	
REGION III	-	64,612	-	64,612	-	-	64,612	-	64,612	
REGION IVA	-	71,151	-	71,151	-	-	71,151	-	71,151	
REGION IVB	-	29,241	-	29,241	-	-	29,241	-	29,241	
REGION IX	-	34,528	-	34,528	-	-	34,528	-	34,528	
REGION V	-	54,166	-	54,166	-	-	54,166	-	54,166	
REGION VI	-	59,019	-	59,019	-	-	59,019	-	59,019	
REGION VII	-	54,652	-	54,652	-	-	54,652	-	54,652	
REGION VIII	-	50,389	-	50,389	-	-	50,389	-	50,389	
REGION X	-	37,140	-	37,140	-	-	37,140	-	37,140	
REGION XI	-	34,344	-	34,344	-	-	34,344	-	34,344	
REGION XII	-	33,738	-	33,738	-	-	33,738	-	33,738	

**DEPARTMENT OF EDUCATION - OFFICE OF THE SECRETARY**  
**SUMMARY OF APPROPRIATIONS UNDER FOR COMPREHENSIVE RELEASE (FCR) THROUGH THE GAA AS AN ALLOTMENT ORDER (GAAAO)**  
(In Thousand Pesos)

Annex 'A'

PARTICULARS	FY 2018 GAA (R.A. No. 10964)				For Comprehensive Release (Annex A)			
	PS	MOOE	CO	TOTAL	PS	MOOE	CO	TOTAL
REGION XIII	-	25,742	-	25,742	-	25,742	-	25,742
a. Human Resource Development for Personnel in Schools and Learning Centers	12,212	2,722,983	-	2,735,195	12,212	2,722,983	-	2,735,195
CENTRAL OFFICE	12,212	2,722,983	-	2,735,195	12,212	2,722,983	-	2,735,195
b. Division Office - In Service Training (InSeT)	-	677,566	-	677,566	-	677,566	-	677,566
CAR	-	18,957	-	18,957	-	18,957	-	18,957
NCR	-	39,996	-	39,996	-	39,996	-	39,996
REGION I	-	38,466	-	38,466	-	38,466	-	38,466
REGION II	-	31,425	-	31,425	-	31,425	-	31,425
REGION III	-	64,612	-	64,612	-	64,612	-	64,612
REGION IVA	-	71,151	-	71,151	-	71,151	-	71,151
REGION IVB	-	29,241	-	29,241	-	29,241	-	29,241
REGION IX	-	34,528	-	34,528	-	34,528	-	34,528
REGION V	-	54,166	-	54,166	-	54,166	-	54,166
REGION VI	-	59,019	-	59,019	-	59,019	-	59,019
REGION VII	-	54,652	-	54,652	-	54,652	-	54,652
REGION VIII	-	50,389	-	50,389	-	50,389	-	50,389
REGION X	-	37,140	-	37,140	-	37,140	-	37,140
REGION XI	-	34,344	-	34,344	-	34,344	-	34,344
REGION XII	-	33,738	-	33,738	-	33,738	-	33,738
REGION XIII	-	25,742	-	25,742	-	25,742	-	25,742
Teacher Quality and Development Program	2,412	5,796	-	8,208	2,412	5,796	-	8,208
CENTRAL OFFICE	2,412	5,796	-	8,208	2,412	5,796	-	8,208
<b>TOTAL FCR, DEPED-OSEC</b>	<b>353,205,626</b>	<b>76,857,396</b>	<b>122,459,667</b>	<b>552,522,689</b>	<b>305,002,881</b>	<b>72,206,943</b>	<b>31,004,772</b>	<b>408,214,596</b>

DEPARTMENT OF EDUCATION - OFFICE OF THE SECRETARY  
SUMMARY OF APPROPRIATIONS UNDER FOR LATER RELEASE (FLR)  
(In Thousand Pesos)

Annex 'B'

PARTICULARS		For Later Release (FLR)			
		PS	MOOE	CO	TOTAL
	REGION XII	207,170			207,170
	REGION XIII	224,818			224,818
	f. Lump-sum for Filling-up of Non-Teaching Positions	3,352,596	-	-	3,352,596
	CAR	88,077			88,077
	CENTRAL OFFICE	94,594			94,594
	NCR	347,778			347,778
	REGION I	146,491			146,491
	REGION II	116,820			116,820
	REGION III	297,176			297,176
	REGION IVA	394,126			394,126
	REGION IVB	146,442			146,442
	REGION IX	128,814			128,814
	REGION V	202,816			202,816
	REGION VI	190,848			190,848
	REGION VII	359,280			359,280
	REGION VIII	243,378			243,378
	REGION X	170,717			170,717
	REGION XI	181,881			181,881
	REGION XII	131,720			131,720
	REGION XIII	111,638			111,638
20000000000000	<b>II. Support To Operations</b>	-	-	30,000	30,000
200000100001000	<b>Physical Fitness and School Sports</b>	-	-	30,000	30,000
	<b>Project(s)</b>	-	-	30,000	30,000
	<b>Locally-Funded Project(s)</b>	-	-	30,000	30,000
	<b>Rehabilitation of the Track and Field Oval of the San Pablo Central Elementary School, San Pablo Laguna</b>	-	-	30,000	30,000
200000200001000	<b>REGION IVA</b>			30,000	30,000
300000000000000	<b>III. Operations</b>	38,920,048	4,650,453	91,424,895	134,995,396
310200000000000	<b>BASIC EDUCATION INPUTS PROGRAM</b>	38,920,048	4,650,453	91,424,895	134,995,396
310200100002000	<b>New School Personnel Positions</b>	38,920,048	237,068	-	39,157,116
	CAR	489,420	-	-	489,420
	CENTRAL OFFICE	2,193,340	237,068	-	2,430,408
	NCR	4,300,270	-	-	4,300,270
	REGION I	1,311,613	-	-	1,311,613
	REGION II	1,284,760	-	-	1,284,760
	REGION III	3,786,772	-	-	3,786,772
	REGION IVA	5,342,816	-	-	5,342,816
	REGION IVB	1,751,989	-	-	1,751,989
	REGION IX	1,334,000	-	-	1,334,000
	REGION V	2,689,319	-	-	2,689,319
	REGION VI	2,226,497	-	-	2,226,497
	REGION VII	3,810,170	-	-	3,810,170
	REGION VIII	2,146,764	-	-	2,146,764
	REGION X	1,651,734	-	-	1,651,734
	REGION XI	2,164,388	-	-	2,164,388
	REGION XII	1,380,953	-	-	1,380,953
	REGION XIII	1,055,243	-	-	1,055,243
	a. Lumpsum for Creation of New Teaching Positions	22,174,795	-	-	22,174,795
	CAR	191,878			191,878
	CENTRAL OFFICE	2,180,318			2,180,318
	NCR	1,152,927			1,152,927
	REGION I	772,788			772,788
	REGION II	492,551			492,551

## SUMMARY OF APPROPRIATIONS UNDER FOR LATER RELEASE (FLR)

(In Thousand Pesos)

PARTICULARS	For Later Release (FLR)			
	PS	MOOE	CO	TOTAL
REGION III	2,261,745			2,261,745
REGION IVA	3,732,834			3,732,834
REGION IVB	1,134,676			1,134,676
REGION IX	814,294			814,294
REGION V	1,644,771			1,644,771
REGION VI	1,547,318			1,547,318
REGION VII	1,626,907			1,626,907
REGION VIII	1,063,650			1,063,650
REGION X	923,933			923,933
REGION XI	1,197,557			1,197,557
REGION XII	801,448			801,448
REGION XIII	635,200			635,200
b. Lumpsum for Filling-up of Teaching Positions	16,745,253	-	-	16,745,253
CAR	297,542			297,542
CENTRAL OFFICE	13,022			13,022
NCR	3,147,343			3,147,343
REGION I	538,825			538,825
REGION II	792,209			792,209
REGION III	1,525,027			1,525,027
REGION IVA	1,609,982			1,609,982
REGION IVB	617,313			617,313
REGION IX	519,706			519,706
REGION V	1,044,548			1,044,548
REGION VI	679,179			679,179
REGION VII	2,183,263			2,183,263
REGION VIII	1,083,114			1,083,114
REGION X	727,801			727,801
REGION XI	966,831			966,831
REGION XII	579,505			579,505
REGION XIII	420,043			420,043
c. Grant of Cash Allowance	-	237,068	-	237,068
CENTRAL OFFICE		237,068		237,068
310200100006000 <b>Basic Education Facilities</b>	-	3,478,385	89,424,895	92,903,280
CENTRAL OFFICE	-	3,478,385	89,424,895	92,903,280
a. Construction, replacement, and completion of kindergarten, elementary and secondary school buildings and technical vocational laboratories	-	-	84,783,632	84,783,632
b. Engineering and Administrative Overhead (EAO)	-	-	426,048	426,048
c. Repair and rehabilitation of school buildings	-	-	1,245,215	1,245,215
d. School desks, furniture and fixtures	-	3,478,385	-	3,478,385
e. Electrification of unenergized Schools and modernization of electrical system of on-grid schools	-	-	2,970,000	2,970,000
310200100007000 <b>Conservation and restoration of Gabaldon and other heritage school buildings</b>	-	-	2,000,000	2,000,000
CENTRAL OFFICE			2,000,000	2,000,000
310200100008000 <b>Site Development Plans</b>	-	435,000	-	435,000
CENTRAL OFFICE		435,000		435,000
310200100009000 <b>Nationwide Audit of School Facilities</b>	-	500,000	-	500,000
CENTRAL OFFICE		500,000		500,000
<b>TOTAL FLR, DEPED-OSEC</b>	<b>48,202,745</b>	<b>4,650,453</b>	<b>91,454,895</b>	<b>144,308,093</b>

## SUMMARY OF TRANSFERRED APPROPRIATIONS UNDER FOR LATER RELEASE (FLR)

(In Thousand Pesos)

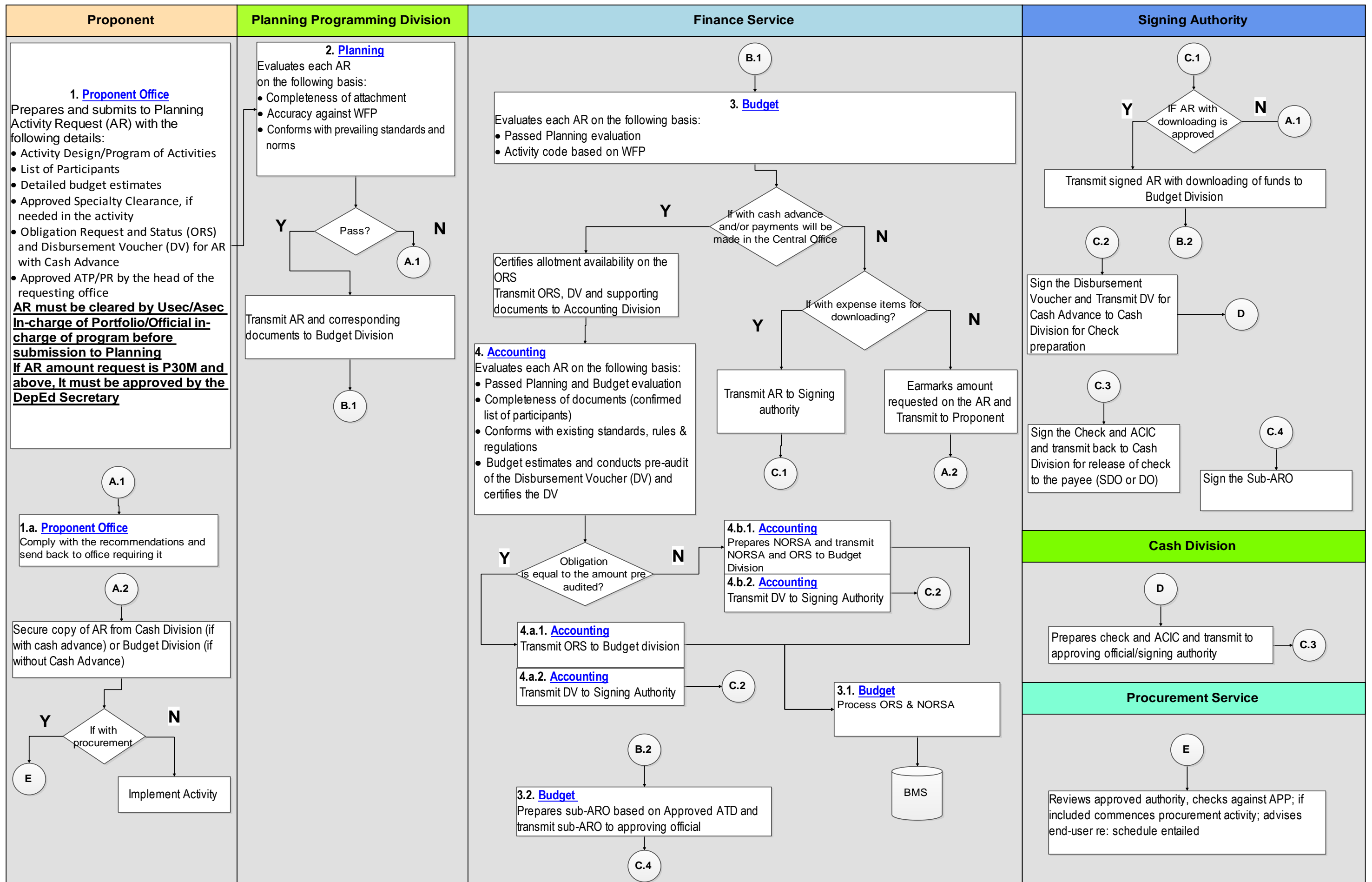
PARTICULARS		Adjustments under FLR			
		PS	MOOE	CO	TOTAL
<b>30000000000000</b>	<b>III. Operations</b>				
310200000000000	<b>BASIC EDUCATION INPUTS PROGRAM</b>				
	From:				
310200100006000	<b>Basic Education Facilities</b>	-	-	(84,996,656)	(84,996,656)
	<b>DepEd - OSEC, Central Office</b>	-	-	(84,996,656)	(84,996,656)
	a. Construction, replacement, and completion of kindergarten, elementary and secondary school buildings and technical vocational laboratories			(84,783,632)	(84,783,632)
	b. Engineering and Administrative Overhead (EAO)			(213,024)	(213,024)
	To:				
300101200001000	<b>Basic Education Facilities</b>	-	-	84,996,656	84,996,656
	<b>DPWH - OSEC</b>	-	-	84,996,656	84,996,656
	a. Construction, replacement, and completion of kindergarten, elementary and secondary school buildings and technical vocational laboratories			84,783,632	84,783,632
	b. Engineering and Administrative Overhead (EAO)			213,024	213,024

## SUMMARY OF TRANSFERRED APPROPRIATIONS UNDER FOR COMPREHENSIVE RELEASE (FCR)

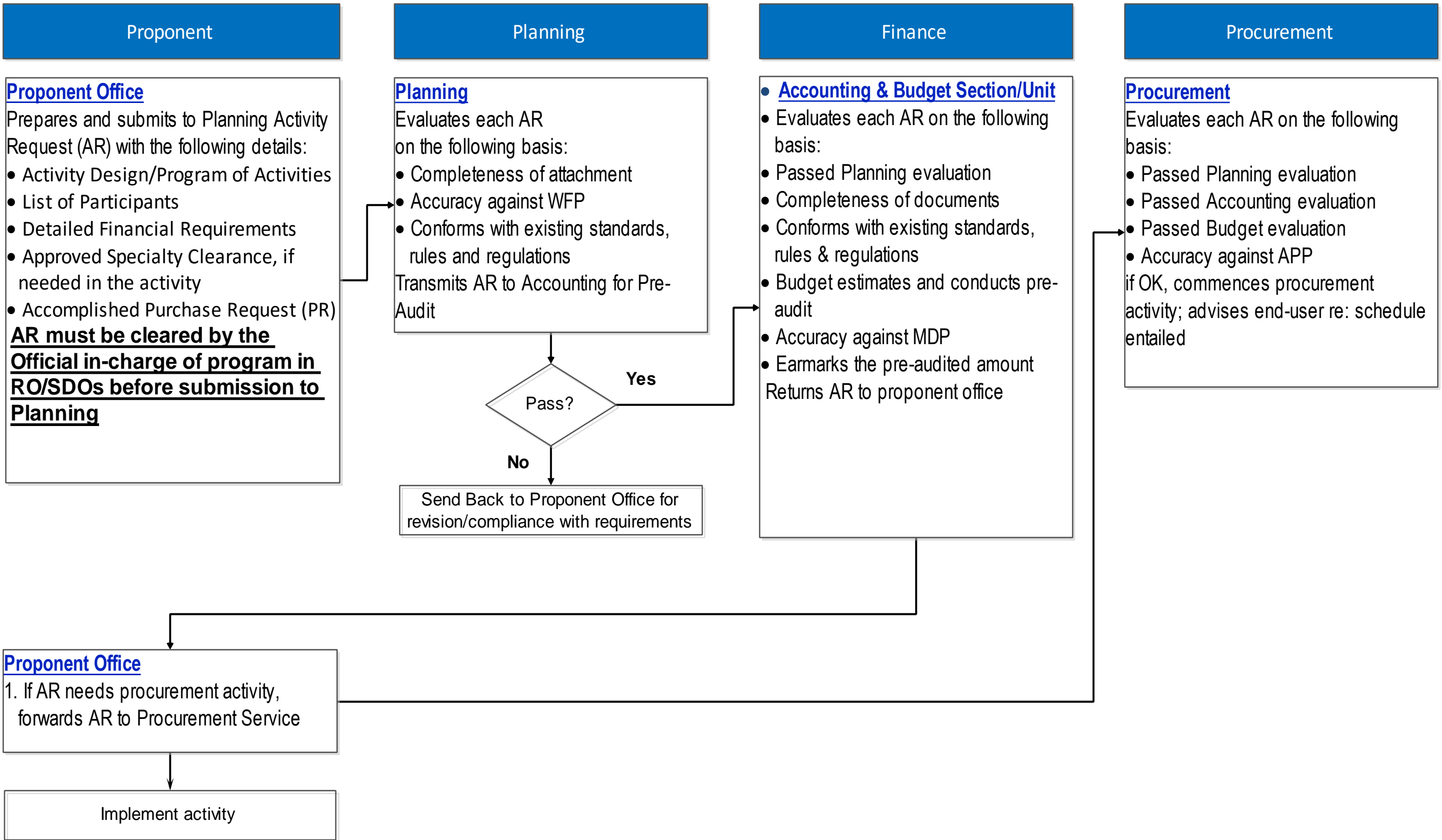
(In Thousand Pesos)

PARTICULARS		Adjustments under FCR			
		PS	MOOE	CO	TOTAL
<b>30000000000000</b>	<b>III. Operations</b>				
31020000000000	<b>BASIC EDUCATION INPUTS PROGRAM</b>				
	From:				
310200100006000	Basic Education Facilities	-	-	(3,500,000)	(3,500,000)
	DepEd - OSEC, Central Office	-	-	(3,500,000)	(3,500,000)
	Preliminary Detailed Engineering Fund			(3,500,000)	(3,500,000)
	To:				
300101200001000	Basic Education Facilities	-	-	3,500,000	3,500,000
	DPWH - OSEC	-	-	3,500,000	3,500,000
	Preliminary Detailed Engineering Fund			3,500,000	3,500,000
31040000000000	<b>SUPPORT TO SCHOOLS AND LEARNERS PROGRAM</b>				
310400100010000	Implementation of the Grant of Cash allowance, Hardship Pay, Equivalent Record Form (ERF), Conversion to Master Teacher (MT) and Reclassification of Positions	-	-	-	-
	Central Office		(1,309,417)		(1,309,417)
	Regional Office - NCR		129,631		129,631
	Regional Office - I		73,874		73,874
	Regional Office - CAR		27,486		27,486
	Regional Office - II		51,900		51,900
	Regional Office - III		134,380		134,380
	Regional Office - IV-A		154,508		154,508
	Regional Office - IV-B		49,499		49,499
	Regional Office - V		99,852		99,852
	Regional Office - VI		113,418		113,418
	Regional Office - VII		104,302		104,302
	Regional Office - VIII		79,870		79,870
	Regional Office - IX		58,102		58,102
	Regional Office - X		63,564		63,564
	Regional Office - XI		63,454		63,454
	Regional Office - XII		61,579		61,579
	Regional Office - XIII		43,998		43,998

Activity Request (AR) Process Flow for DepEd Central Office



**Activity Request (AR) Process Flow, RO & SDOs**





Republic of the Philippines  
**Department of Education**

**Date**

AR No: \_\_\_\_\_ (Auto-generated once requested/prepared online)

**FOR :**

CO: [EXECOM IN-CHARGE OF PORTFOLIO  
[SECRETARY] for transactions above P30M  
RO: [REGIONAL DIRECTOR]  
SDO: [SCHOOLS DIVISION SUPERINTENDENT]

**FROM :**

CO: [DIRECTOR OR PERMANENT CO-TERM EXECUTIVE ASSISTANT (EA) IF  
REQUESTING OFFICE ARE UNDERSECRETARIES, ASSISTANT SECRETARIES  
AND SECRETARY  
RO: [REQUESTING OFFICIAL] See DO 67, s. 2016 - Signing Authorities  
SDO: [REQUESTING OFFICIAL] See DO 67, s. 2016 - Signing Authorities

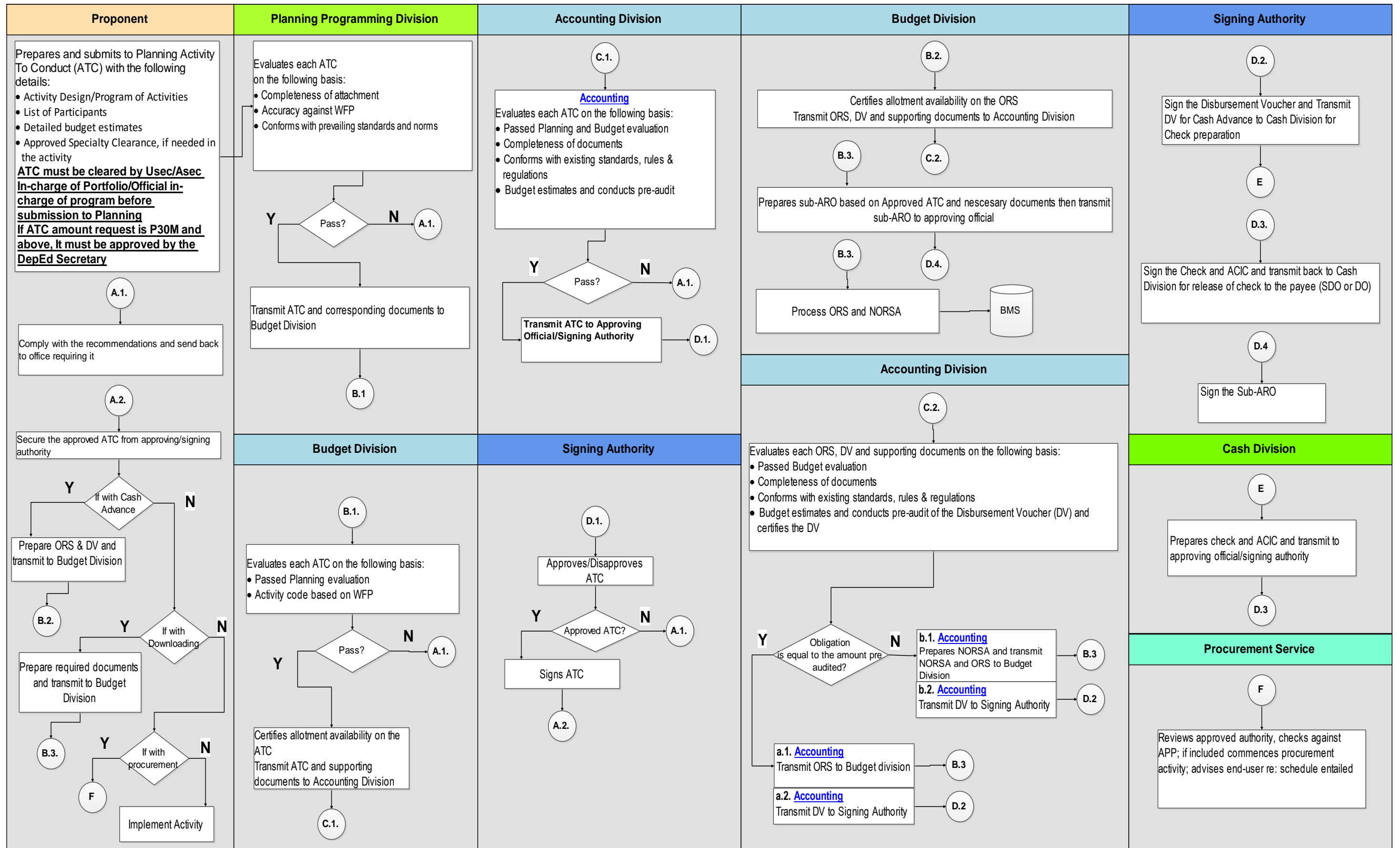
**SUBJECT : Activity Request**

NAME OF PROGRAM(S)/PROJECT(S)	Program/Project Name  Name/Title of the Program/Project as reflected in the WFP. (e.g. Revision of Manual of Operation for Private Schools)		
OUTPUT(S) TO BE PRODUCED AND ITS CODE(S)	State the "Output Code(s)" and the corresponding final output(s) to be produced as reflected in the WFP including the physical target.  (e.g. OC-17-BCD-CSD-PF-BEC-001 - Revised Manual of Operation for Private School - 1)		
	Output Code	Output	Physical Target
ACTIVITY/IES TO BE REQUESTED	Specific activities to be undertaken in order to produce the output. It may be a series of workshops, trainings, writeshops, conferences, research initiatives, studies, etc. Example for the Revised Manual of Operations for Private Schools: <ol style="list-style-type: none"> <li>1. AC-17-BCD-CSD-PF-BEC-001, Policy Analysis Workshop</li> <li>2. AC-17-BCD-CSD-PF-BEC-002, Regional Consultations in 3 clusters</li> <li>3. AC-17-BCD-CSD-PF-BEC-003, Writeshop on the drafting of revised Manual of Operations for Private Schools</li> <li>4. AC-17-BCD-CSD-PFBEC-004, Printing of the Manual</li> </ol>		

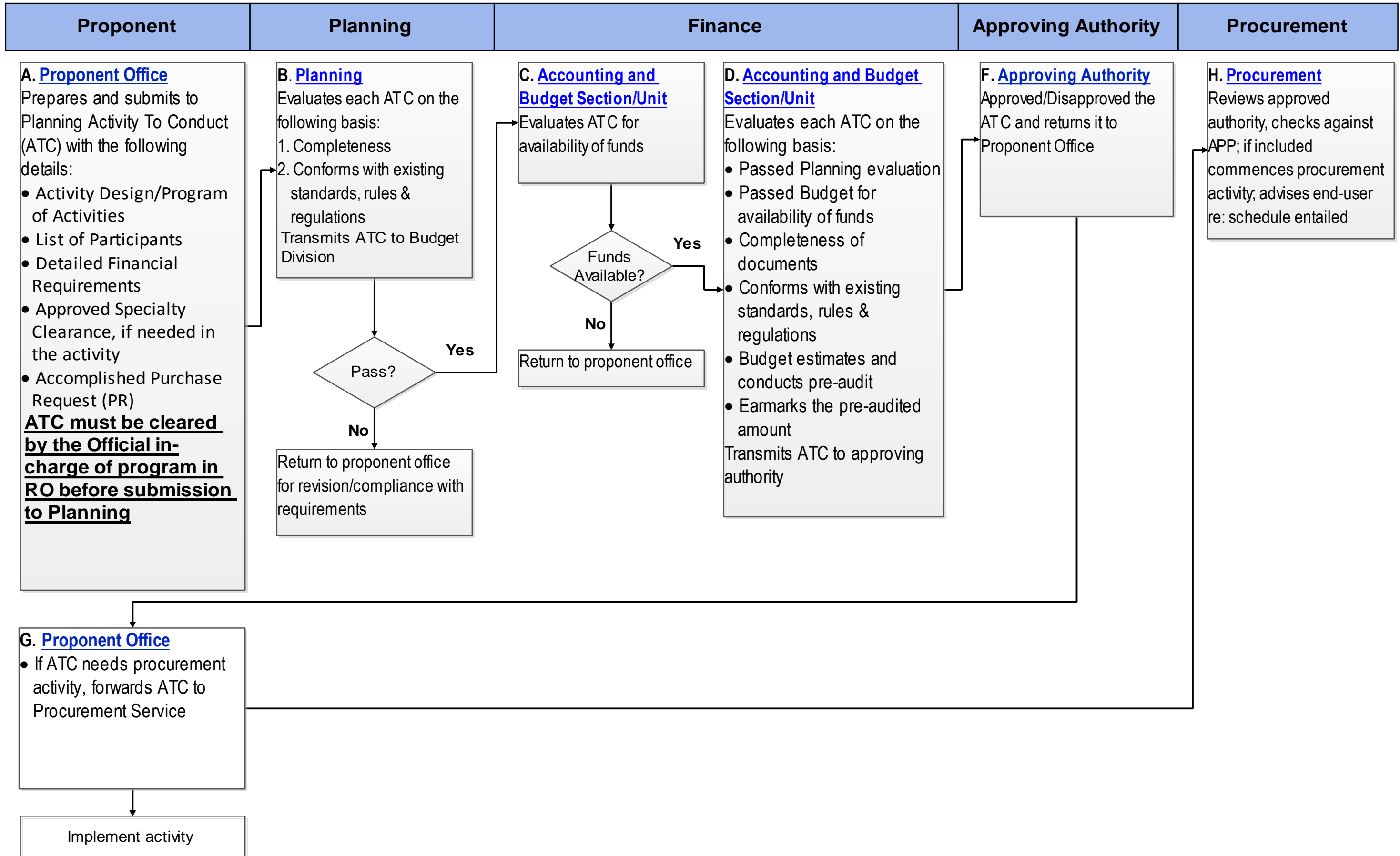
	<table border="1" style="width: 100%; border-collapse: collapse;"> <tr> <th style="width: 50%;">Activity Code</th> <th style="width: 50%;">Name of Activity</th> </tr> <tr> <td> </td> <td> </td> </tr> <tr> <td> </td> <td> </td> </tr> </table>		Activity Code	Name of Activity																		
Activity Code	Name of Activity																					
ACTIVITY/IES WITH DOWNLOADING	Write NONE if there is no request for downloading of funds. Otherwise, indicate Specific OUs who will receive the downloaded funds, exact amount to be downloaded, and its purpose.	USec for Finance – BPM (for CO) Regional Director or SDS (for OUs)																				
ACTIVITY/IES TO BE BUMPED-OFF AND ITS CODE(S)	Identify activity/ies to be bumped-off, if any, to cover expenses required to certain activity/ies in case that the requested amount exceeds with the approved budget in WFP.																					
	<table border="1" style="width: 100%; border-collapse: collapse;"> <tr> <th style="width: 33%;">Activity Code</th> <th style="width: 33%;">Name of Activity</th> <th style="width: 34%;">Amount to be bumped-off</th> </tr> <tr> <td> </td> <td> </td> <td> </td> </tr> <tr> <td> </td> <td> </td> <td> </td> </tr> <tr> <td> </td> <td> </td> <td> </td> </tr> <tr> <td colspan="2"><b>Grand Total</b></td> <td><b>P _____</b></td> </tr> </table>		Activity Code	Name of Activity	Amount to be bumped-off										<b>Grand Total</b>		<b>P _____</b>					
Activity Code	Name of Activity	Amount to be bumped-off																				
<b>Grand Total</b>		<b>P _____</b>																				
FINANCIAL REQUIREMENTS	Amount being requested (must reflect the amount indicated in WFP). Attach the detailed computation for pre-audit, per activity, showing the grand total. Requirement for this transaction as follows:																					
	<table border="1" style="width: 100%; border-collapse: collapse;"> <tr> <th style="width: 33%;">Activity Code</th> <th style="width: 33%;">Amount in WFP</th> <th style="width: 34%;">Amount Requested</th> </tr> <tr> <td> </td> <td> </td> <td> </td> </tr> <tr> <td> </td> <td> </td> <td> </td> </tr> <tr> <td> </td> <td> </td> <td> </td> </tr> <tr> <td colspan="2"><b>Grand Total</b></td> <td> </td> </tr> </table>		Activity Code	Amount in WFP	Amount Requested										<b>Grand Total</b>							
Activity Code	Amount in WFP	Amount Requested																				
<b>Grand Total</b>																						
SOURCE OF FUNDS	Indicate Line Item per GAA and Funding Year																					
ADMINISTRATIVE ARRANGEMENTS	Articulation of administrative arrangements (participants, inclusive dates, special disbursing officer of the activity, and other relevant information per activity including cost-sharing arrangements, if necessary)																					
	<table border="1" style="width: 100%; border-collapse: collapse;"> <tr> <th style="width: 10%;">Activity Code</th> <th style="width: 30%;">Sub-Activities</th> <th style="width: 10%;">Pax</th> <th style="width: 10%;">Inclusive Dates</th> <th style="width: 40%;">Remarks</th> </tr> <tr> <td> </td> <td> </td> <td> </td> <td> </td> <td> </td> </tr> <tr> <td> </td> <td> </td> <td> </td> <td> </td> <td> </td> </tr> <tr> <td> </td> <td> </td> <td> </td> <td> </td> <td> </td> </tr> </table>		Activity Code	Sub-Activities	Pax	Inclusive Dates	Remarks															
Activity Code	Sub-Activities	Pax	Inclusive Dates	Remarks																		
ANNEXES	<ol style="list-style-type: none"> <li>1. Activity Design/Program of Activities</li> <li>2. List of Participants</li> <li>3. Detailed Budget Estimates</li> <li>4. Certification from Clearing House, if needed in the activity</li> <li>5. Accomplished Purchase Request (PR), if any</li> <li>6. Legal instrument or any form of directives from person in authority</li> <li>7. Portion of the approved WFP where activities are stipulated.</li> </ol>																					

All expenses incurred in this activity is subject to usual accounting and auditing rules and regulations.

Authority To Conduct (ATC) Process Flow for DepEd Central Office



**Authority To Conduct (ATC) Process Flow, RO & SDOs**





Republic of the Philippines  
**Department of Education**

**Date**

ATC No: \_\_\_\_\_ (Auto-generated once requested/prepared online)

**FOR :**

CO: [UNDERSECRETARY FOR FINANCE – BPM WITH INITIALS OF THE DIR FOR FINANCE-BPM] for transactions P30M and below  
[SECRETARY] for transactions above P30M  
RO and SDO: [APPROVING OFFICIAL] per DO 67, s. 2016 - Signing Authorities

**THRU :**

CO: USEC OR ASEC IN-CHARGE OF THE PORTFOLIO  
RO: [ASSISTANT REGIONAL DIRECTOR]  
SDO: [ASSISTANT DIVISION SUPERINTENDENT]

**FROM :**

CO: [DIRECTOR OR PERMANENT CO-TERM EXECUTIVE ASSISTANT (EA) IF REQUESTING OFFICE ARE UNDERSECRETARIES, ASSISTANT SECRETARIES AND SECRETARY  
RO: [REQUESTING OFFICIAL] See DO 67, s. 2016 - Signing Authorities  
SDO: [REQUESTING OFFICIAL] See DO 67, s. 2016 - Signing Authorities

**SUBJECT : Authority to Conduct**

NAME OF PROGRAM(S)/PROJECT(S)	Program/Project Name  Name/Title of the Program/Project as reflected in the WFP. (e.g. Revision of Manual of Operation for Private Schools)		
OUTPUT(S) TO BE PRODUCED AND ITS CODE(S)	State the "Output Code(s)" and the corresponding final output(s) to be produced as reflected in the WFP including the physical target.  (e.g. OC-17-BCD-CSD-PF-BEC-001 - Revised Manual of Operation for Private School - 1)		
	Output Code	Output	Physical Target
ACTIVITY/IES TO BE REQUESTED	Specific activities to be undertaken in order to produce the output. It may be a series of workshops, trainings, writeshops, conferences, research initiatives, studies, etc. Example for the Revised Manual of Operations for Private Schools: 1. AC-17-BCD-CSD-PF-BEC-001, Policy Analysis Workshop		

	<ol style="list-style-type: none"> <li>2. AC-17-BCD-CSD-PF-BEC-002, Regional Consultations in 3 clusters</li> <li>3. AC-17-BCD-CSD-PF-BEC-003, Writeshop on the drafting of revised Manual of Operations for Private Schools</li> <li>4. AC-17-BCD-CSD-PFBEC-004, Printing of the Manual</li> </ol> <table border="1" style="width: 100%; margin-top: 10px;"> <thead> <tr> <th style="width: 50%;">Activity Code</th> <th style="width: 50%;">Name of Activity</th> </tr> </thead> <tbody> <tr><td> </td><td> </td></tr> <tr><td> </td><td> </td></tr> </tbody> </table>	Activity Code	Name of Activity													
Activity Code	Name of Activity															
ACTIVITY/IES WITH DOWNLOADING	Write NONE if there is no request for downloading of funds. Otherwise, indicate Specific OUs who will receive the downloaded funds, exact amount to be downloaded, and its purpose.															
ACTIVITY/IES TO BE BUMPED-OFF AND ITS CODE(S)	Identify activity/ies to be bumped-off, if any, to cover expenses required to certain activity/ies in case that the requested amount exceeds with the approved budget in WFP. <table border="1" style="width: 100%; margin-top: 10px;"> <thead> <tr> <th style="width: 33%;">Activity Code</th> <th style="width: 33%;">Name of Activity</th> <th style="width: 34%;">Amount to be bumped-off</th> </tr> </thead> <tbody> <tr><td> </td><td> </td><td> </td></tr> <tr><td> </td><td> </td><td> </td></tr> <tr><td> </td><td> </td><td> </td></tr> <tr> <td colspan="2"><b>Grand Total</b></td> <td><b>P</b> _____</td> </tr> </tbody> </table>	Activity Code	Name of Activity	Amount to be bumped-off										<b>Grand Total</b>		<b>P</b> _____
Activity Code	Name of Activity	Amount to be bumped-off														
<b>Grand Total</b>		<b>P</b> _____														
JUSTIFICATION	<ol style="list-style-type: none"> <li>1. Not specified in the WFP</li> <li>2. Deviated from the WFP</li> </ol> <ol style="list-style-type: none"> <li>1. Justify why the said activity should be funded, b) what will be its effect to your committed output targets, c) why the activity must be conducted, and d) state its effect if the activity will not be conducted.</li> <li>2. Justify the deviations from the WFP, b) what will be its effect to your committed output targets, c) why the activity must be conducted without an approved WFP, and d) state its effect if the activity will not be conducted.</li> </ol>															
FINANCIAL REQUIREMENTS	Amount being requested (must reflect the amount indicated in WFP). Attach the detailed computation for pre-audit, per activity, showing the grand total. Requirement for this transaction as follows: <table border="1" style="width: 100%; margin-top: 10px;"> <thead> <tr> <th style="width: 33%;">Activity Code</th> <th style="width: 33%;">Amount in WFP</th> <th style="width: 34%;">Amount Requested</th> </tr> </thead> <tbody> <tr><td> </td><td> </td><td> </td></tr> <tr><td> </td><td> </td><td> </td></tr> <tr><td> </td><td> </td><td> </td></tr> <tr> <td colspan="2"><b>Grand Total</b></td> <td> </td> </tr> </tbody> </table>	Activity Code	Amount in WFP	Amount Requested										<b>Grand Total</b>		
Activity Code	Amount in WFP	Amount Requested														
<b>Grand Total</b>																
SOURCE OF FUNDS	Indicate Line Item per GAA and Funding Year															
ADMINISTRATIVE ARRANGEMENTS	Articulation of administrative arrangements (participants, inclusive dates, special disbursing officer of the activity, and other relevant information per activity including cost-sharing arrangements, if necessary) <table border="1" style="width: 100%; margin-top: 10px;"> <thead> <tr> <th style="width: 10%;">Activity Code</th> <th style="width: 20%;">Sub-Activities</th> <th style="width: 10%;">Pax</th> <th style="width: 15%;">Inclusive Dates</th> <th style="width: 45%;">Remarks</th> </tr> </thead> <tbody> <tr><td> </td><td> </td><td> </td><td> </td><td> </td></tr> <tr><td> </td><td> </td><td> </td><td> </td><td> </td></tr> </tbody> </table>	Activity Code	Sub-Activities	Pax	Inclusive Dates	Remarks										
Activity Code	Sub-Activities	Pax	Inclusive Dates	Remarks												
ANNEXES	<ol style="list-style-type: none"> <li>1. Activity Design/Program of Activities</li> <li>2. List of Participants</li> </ol>															

	<ol style="list-style-type: none"><li>3. Detailed Budget Estimates</li><li>4. Certification from Clearing House, if needed in the activity</li><li>5. Accomplished Purchase Request (PR), if any</li><li>6. Legal instrument or any form of directives from person in authority</li><li>7. Portion of the approved WFP where activities are stipulated.</li></ol>
--	---

All expenses incurred in this activity is subject to usual accounting and auditing rules and regulations.