



Republic of the Philippines
Department of Education

20 MAY 2016

DepEd MEMORANDUM
No. **84**, s. 2016

**ADDITIONAL GUIDELINES ON THE DEPED NATIONAL UNIFORMS
FOR TEACHING AND NON-TEACHING PERSONNEL**

To: Undersecretaries
Assistant Secretaries
Regional Directors
Schools Division Superintendents
Bureau and Service Directors
Public Elementary and Secondary Schools Heads
All Others Concerned

1. The guidelines on the Department of Education (DepEd) National Uniforms for Teaching and Non-Teaching Personnel was announced through DepEd Memorandum (DM) No. 60, s. 2016. In view of this, the following additional guidelines are hereby issued:

- a. The national uniform for male teaching and non-teaching personnel shall be as follows:
 - a.1 Polo: White and off-white (half button)
 - a.2 Pants: Dark gray or black
- b. The national uniform for female teaching and non-teaching personnel shall be as follows:
 - b.1 Teaching Personnel (including Principals)
 - i. Blouse: Beige and pink
 - ii. Pants: Black and dark Gray
 - b.2 Non-Teaching Personnel
 - i. Blouse: Green and blue
 - ii. Pants: Dark gray or black
- c. The textile materials to be used in the uniform should be a combination of polyester, rayon, and cotton. The color specification of the uniforms will be limited to a range of two colors. The details are contained in Enclosure No. 1.
- d. For better appreciation, designs and color specifications can be downloaded on www.deped.gov.ph. The schedule of wearing the uniforms is contained in Enclosure No. 2.
- e. The effectivity of wearing the prescribed uniform will be on **August 1, 2016**. Said uniforms shall be used for **School Years (SYs) 2016-2018**.

2. Pursuant to DM No. 60, s. 2016 entitled *Guidelines on the DepEd National Uniforms for Teaching and Non-Teaching Personnel*, the DepEd underscores the following points:

- a. Only the approved national uniforms should be used by both teaching and non-teaching personnel. **There shall be no regional and schools divisions uniforms** to have uniformity across all offices.
- b. The teaching and non-teaching personnel from central, regional, division and district offices, and public elementary schools are free to purchase and obtain the prescribed uniform materials from any available source that comply with the standards set.
- c. **Bulk buying of fabric is prohibited.** Those who have authority over teachers and any DepEd official found violating this rule shall be subject to appropriate sanctions and disciplinary action. All concerned must send to the DepEd Central Office (CO) a written report of any DepEd official who compels or coerces teaching and non-teaching personnel to purchase the uniform materials from a specific source, including the official himself/herself.
- d. Modifications or adjustments on the prescribed uniforms (e.g. long sleeves instead of short sleeves, skirts instead of pants for the female employees) to conform with religious, social, and cultural requirements or any legitimate practice related thereto shall be allowed.
- e. The following personnel are exempted from wearing the prescribed uniforms:
 - e.1 School officials who occupy third level positions in the Career Executive Service (CES);
 - e.2 Medical and dental staff who shall wear their profession's uniforms;
 - e.3 Janitors, utility workers, and maintenance personnel who shall wear appropriate working attire;
 - e.4 Legal officers, i.e. lawyers/attorneys, whose nature of work requires a different dress code;
 - e.5 Teaching and non-teaching personnel with physical disabilities and other legitimate health reasons;
 - e.6 Pregnant employees who shall wear maternity dresses during their period of pregnancy; and
 - e.7 Teaching and non-teaching personnel who are in mourning may wear the appropriate mourning clothes.
- f. This Office wishes to reiterate and inform all concerned that it has not endorsed, accredited nor authorized any particular supplier to approach the regional and division offices declare himself/herself as the exclusive distributor of the textile materials for the DepEd uniforms. Any uniform supplier who visits DepEd offices and uses the name of the undersigned or of any official in the CO in trying to get a deal for the supply of the DepEd uniforms must be reported to the Office of the Secretary. (*Attention: National Uniform Committee*).

g. Non-compliance to and deliberate defiance of this Order shall be dealt with administratively pursuant to Section 22.C (Violation of Reasonable Office Rules and Regulations), Rule XIV, Revised Omnibus Rules Implementing Book V of the Administrative Code of 1987 (Executive Order No. 292).

3. Based on these provisions, the following documents are enclosed for reference:

- a. Enclosure No. 1 - Color Specifications of the DepEd National Uniforms;
- b. Enclosure No. 2 - Schedule of Wearing the DepEd National Uniforms; and
- c. Enclosure No. 3 - Design and Sketches of the DepEd National Uniforms.

4. Immediate dissemination of this Memorandum is desired.


BR. ARMIN A. LUISTRO FSC
Secretary

Encls.:

As stated

References:

DepEd Memorandum: (No. 60, s. 2016); 497, s. 2010

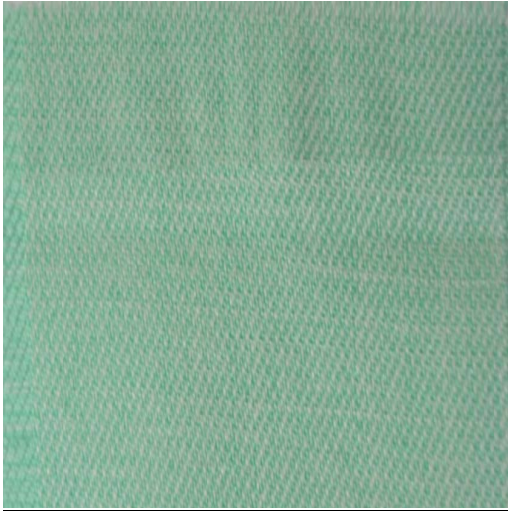
To be indicated in the Perpetual Index
under the following subjects:

EMPLOYEES
OFFICIALS
STRAND: Governance and Operations
TEACHERS
UNIFORMS

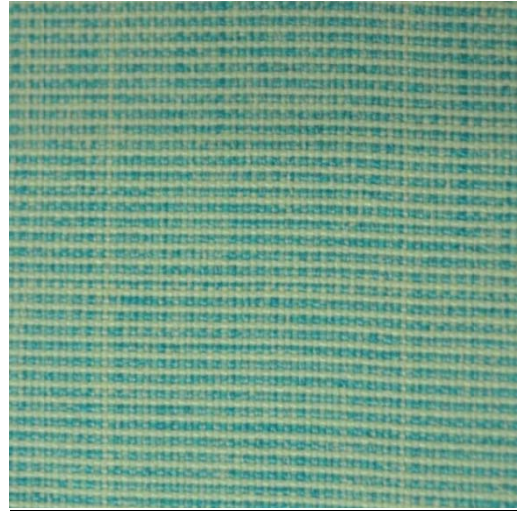
Sheila, DM National Uniform
0339-May 12/13, 2016

DEPARTMENT OF EDUCATION
Color Specifications of DepEd National Uniforms

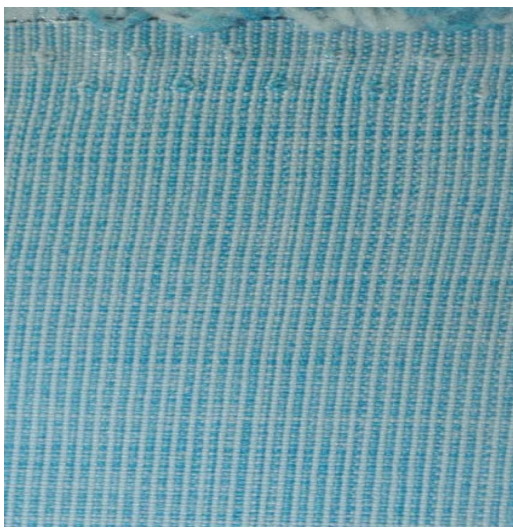
NON-TEACHING PERSONNEL: FEMALE BLOUSE



Not lighter than Green 1



Not darker than Green 2



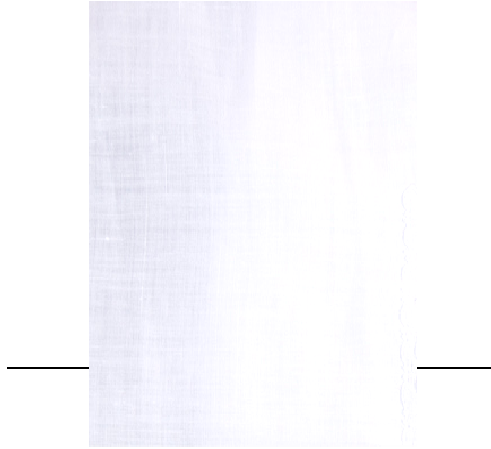
Not lighter than Blue 1



Not darker than Blue 2

DEPARTMENT OF EDUCATION
Color Specifications of DepEd National Uniforms

TEACHING AND NON-TEACHING PERSONNEL: MALE POLO BARONG



White

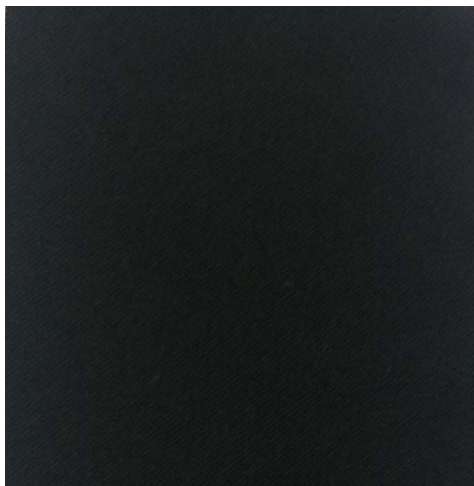


*Not lighter than Beige
1*

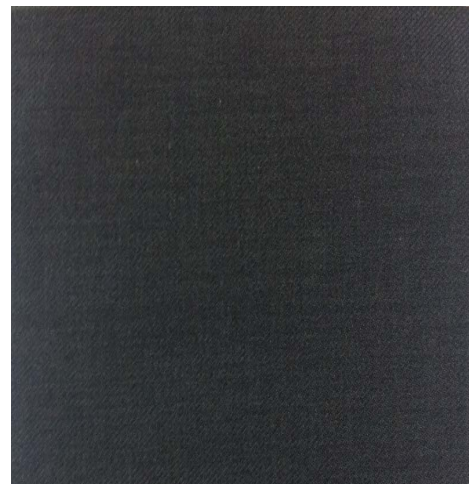


*Not darker than
Beige 2*

**TEACHING AND NON-TEACHING PERSONNEL: MALE AND FEMALE
PANTS**



Black



Dark Gray

(Enclosure No. 2 to DepEd Memorandum No. 84, s. 2016)

DEPARTMENT OF EDUCATION

Schedule of Wearing DepEd National Uniforms

Male Uniforms

A. Teaching / Non-Teaching Personnel

Set A (Mondays / Wednesdays)

Polo: White (half button)

Pants: Dark gray or black

Set B (Tuesdays / Thursdays)

Polo: Off-white (half button)

Pants: Dark gray or black

Female Uniforms

A. Teaching Personnel

Set A (Mondays / Wednesdays)

Blouse: Pink

Pants: Dark gray

Set B (Tuesdays / Thursdays)

Blouse: Beige

Pants: Black

B. Non-Teaching Personnel

Set A (Mondays / Wednesdays)

Blouse: Green

Pants: Dark gray or black

Set B (Tuesdays / Thursdays)

Blouse: Blue

Pants: Dark gray or black

Note: Appropriate office clothes may be worn on Fridays.

DEPARTMENT OF EDUCATION

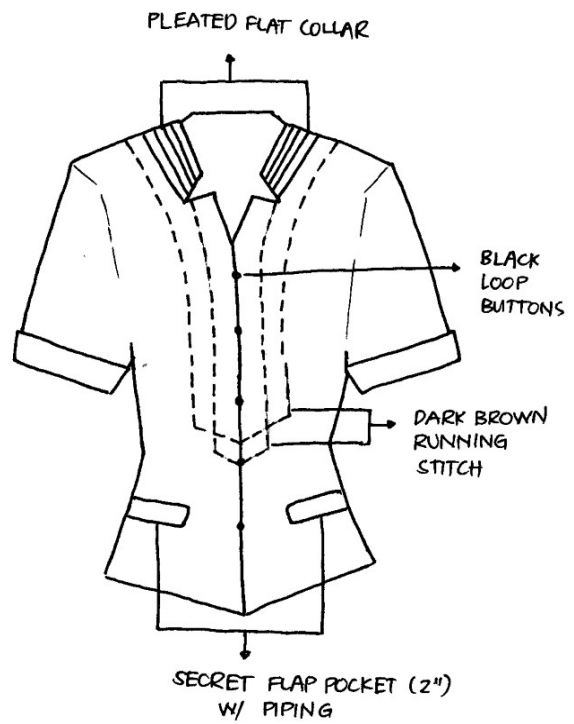
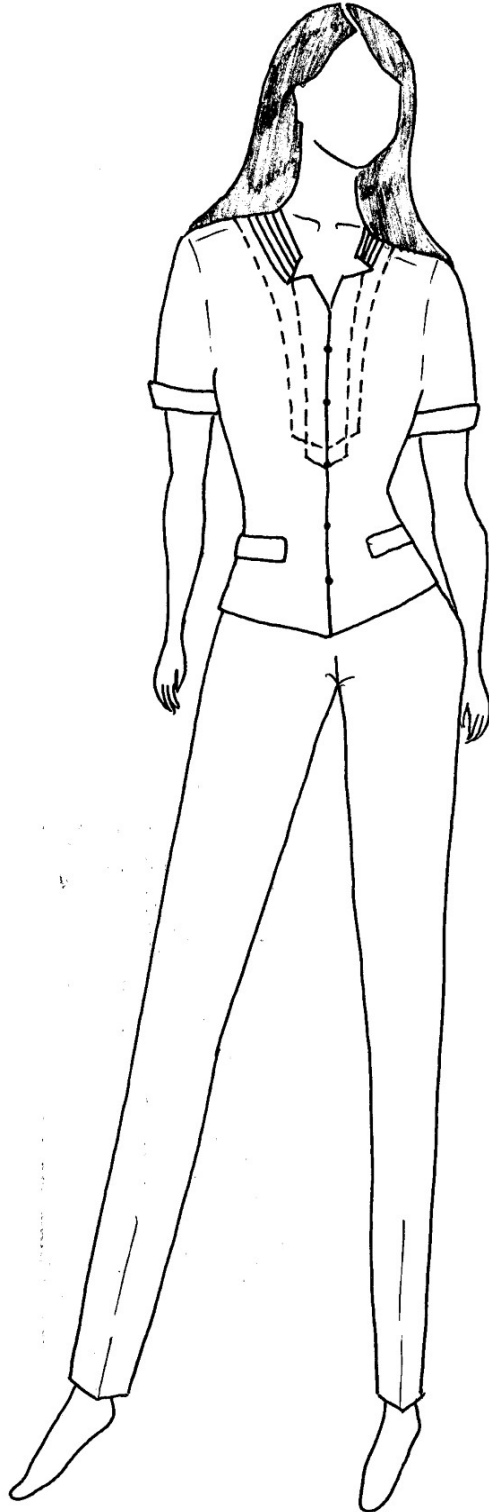
Design and Sketches of the DepEd National Uniforms

FEMALE TEACHING PERSONNEL (SET B)

SCHEDULE : TUESDAYS / THURSDAYS

BLOUSE : BEIGE

PANTS : BLACK



DEPARTMENT OF EDUCATION

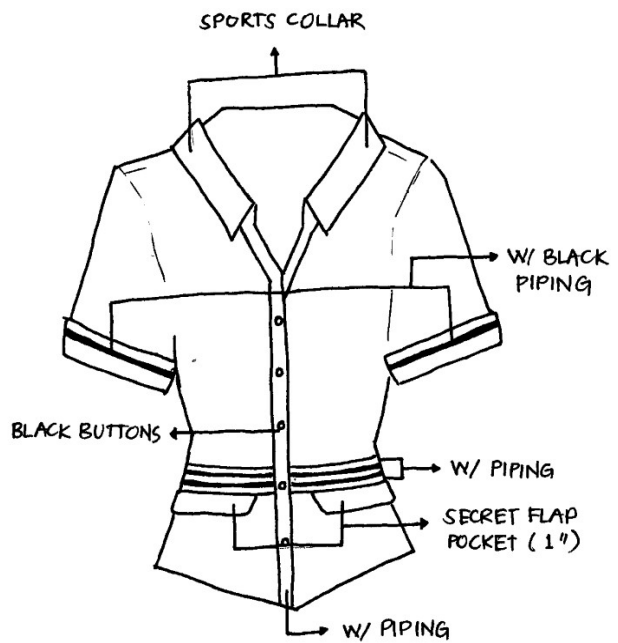
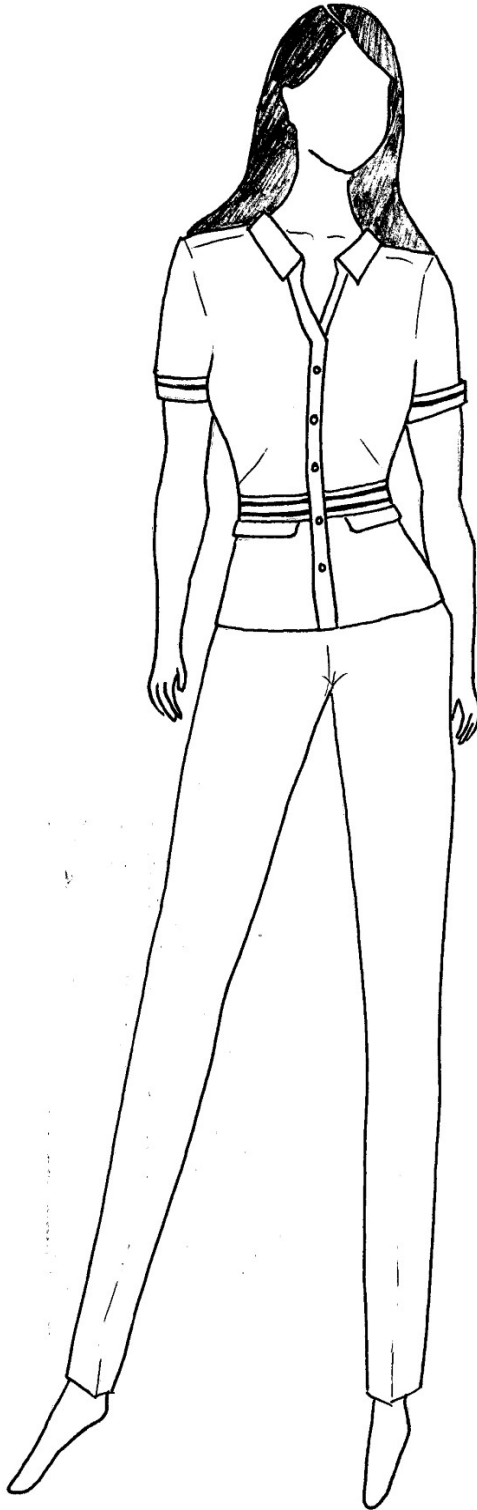
Design and Sketches of the DepEd National Uniforms

FEMALE NON-TEACHING PERSONNEL (SET A)

SCHEDULE: MONDAYS / WEDNESDAYS

BLOUSE : GREEN

PANTS : DARK GRAY OR BLACK



DEPARTMENT OF EDUCATION

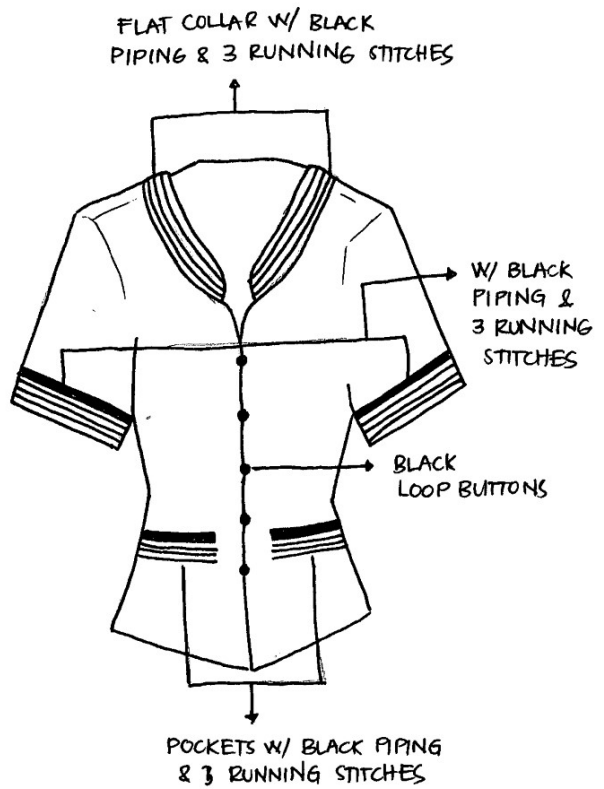
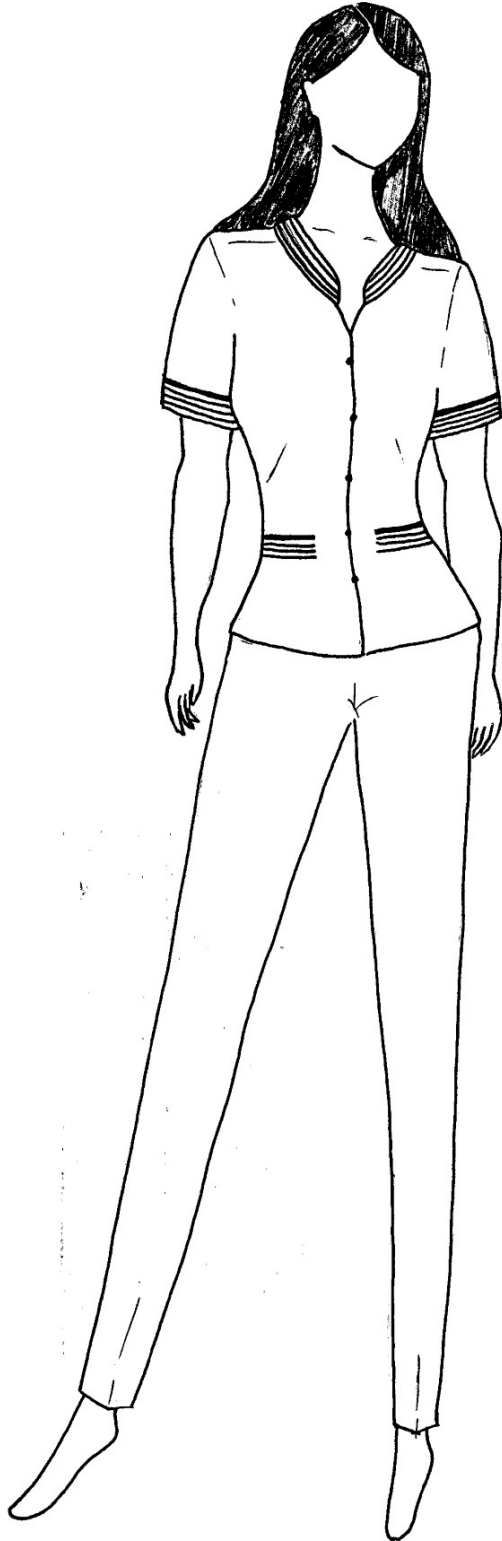
Design and Sketches of the DepEd National Uniforms

FEMALE NON-TEACHING PERSONNEL (SET B)

SCHEDULE : TUESDAYS / THURSDAYS

BLOUSE : BLUE

PANTS : DARK GRAY OR BLACK



DEPARTMENT OF EDUCATION

Design and Sketches of the DepEd National Uniforms

MALE TEACHING / NON-TEACHING PERSONNEL

SET A (MONDAYS / WEDNESDAYS)

POLO: WHITE

PANTS: DARK GRAY / BLACK

SET B (TUESDAYS / THURSDAYS)

POLO: OFF WHITE

PANTS: DARK GRAY / BLACK

