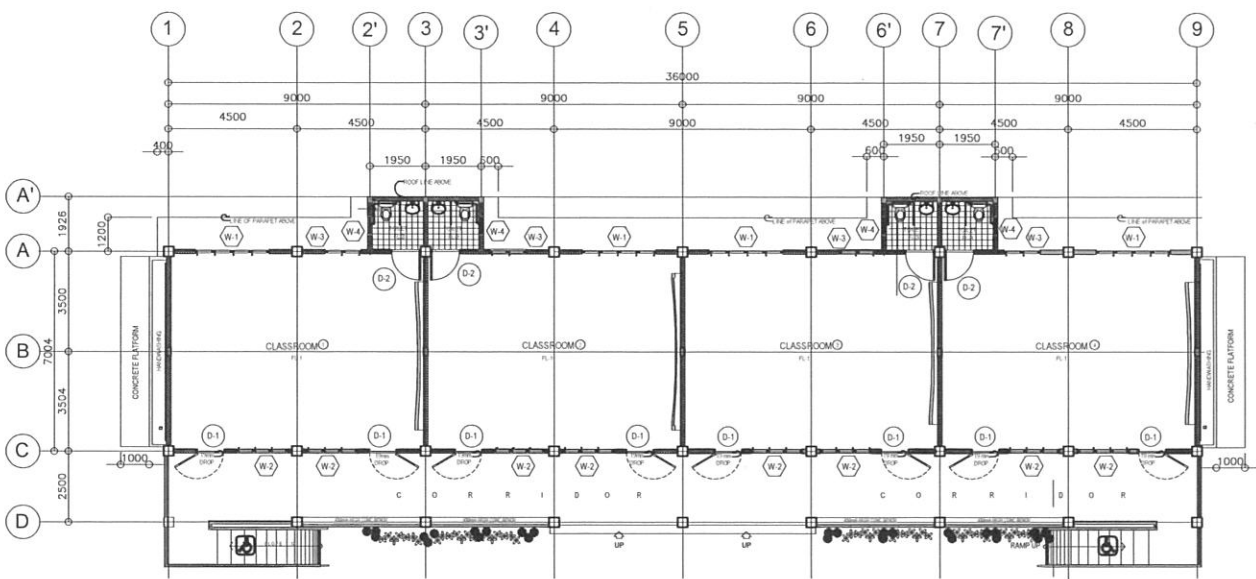


PERSPECTIVE

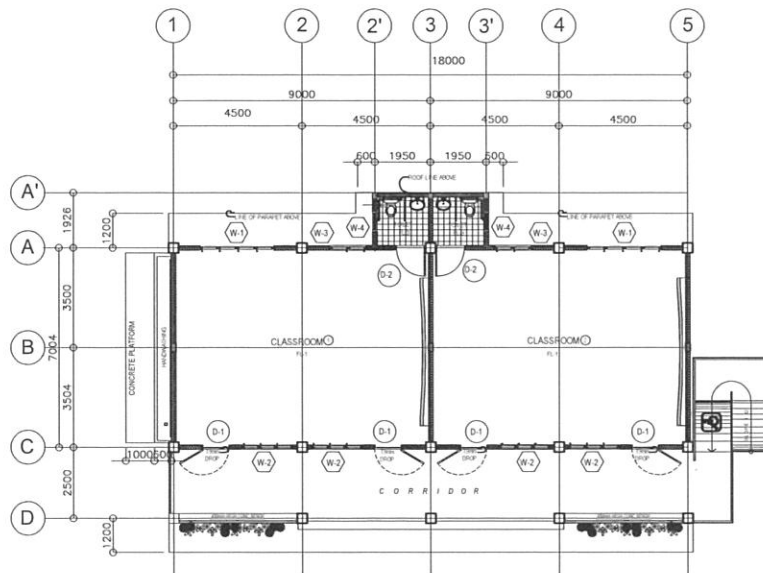


FLOOR PLAN

1 STOREY 4 CLASSROOM SCHOOL BUILDING



PERSPECTIVE

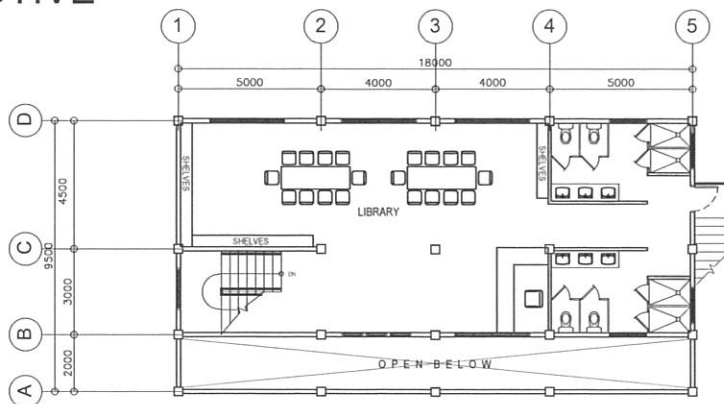


FLOOR PLAN

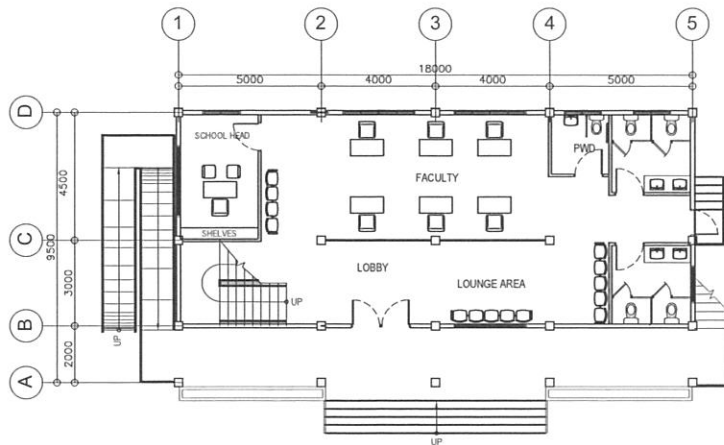
1 STOREY 2 CLASSROOM SCHOOL BUILDING



PERSPECTIVE



SECOND FLOOR PLAN

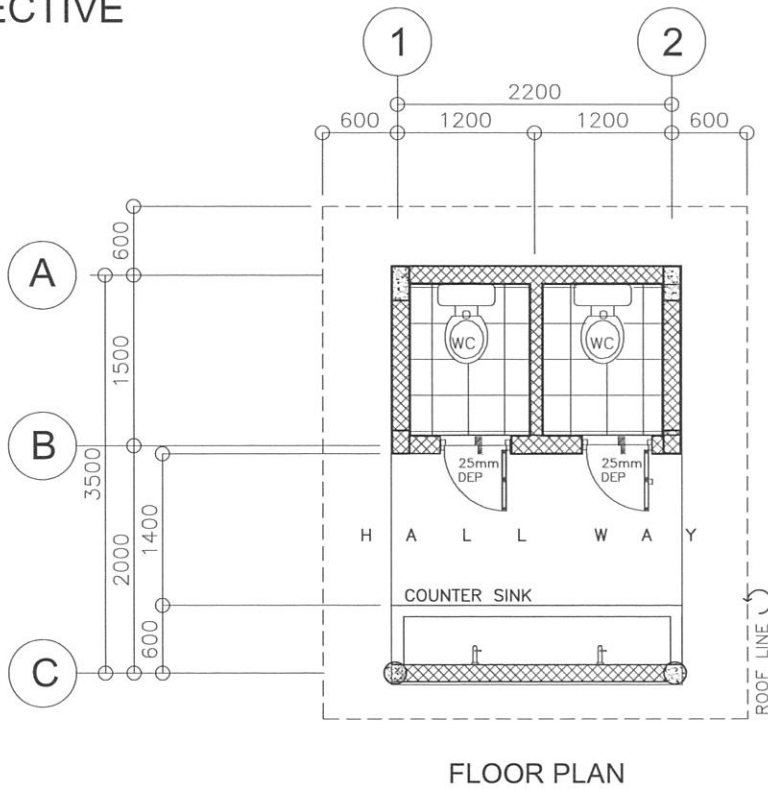


GROUND FLOOR PLAN

PROPOSED ACCESS BUILDING



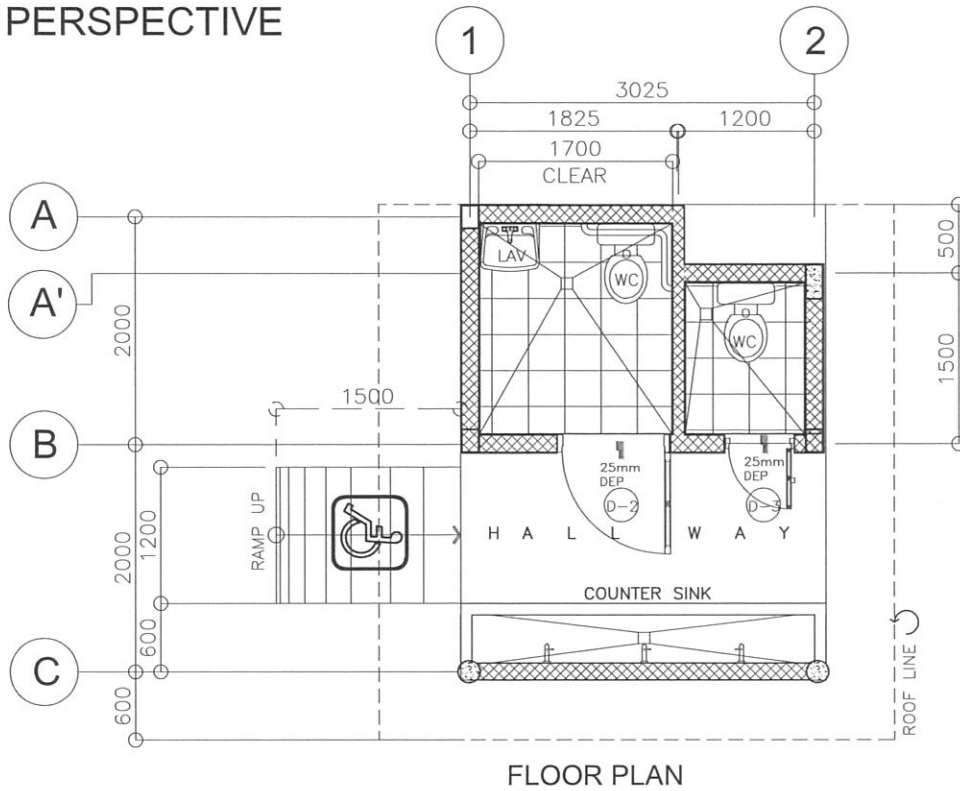
PERSPECTIVE



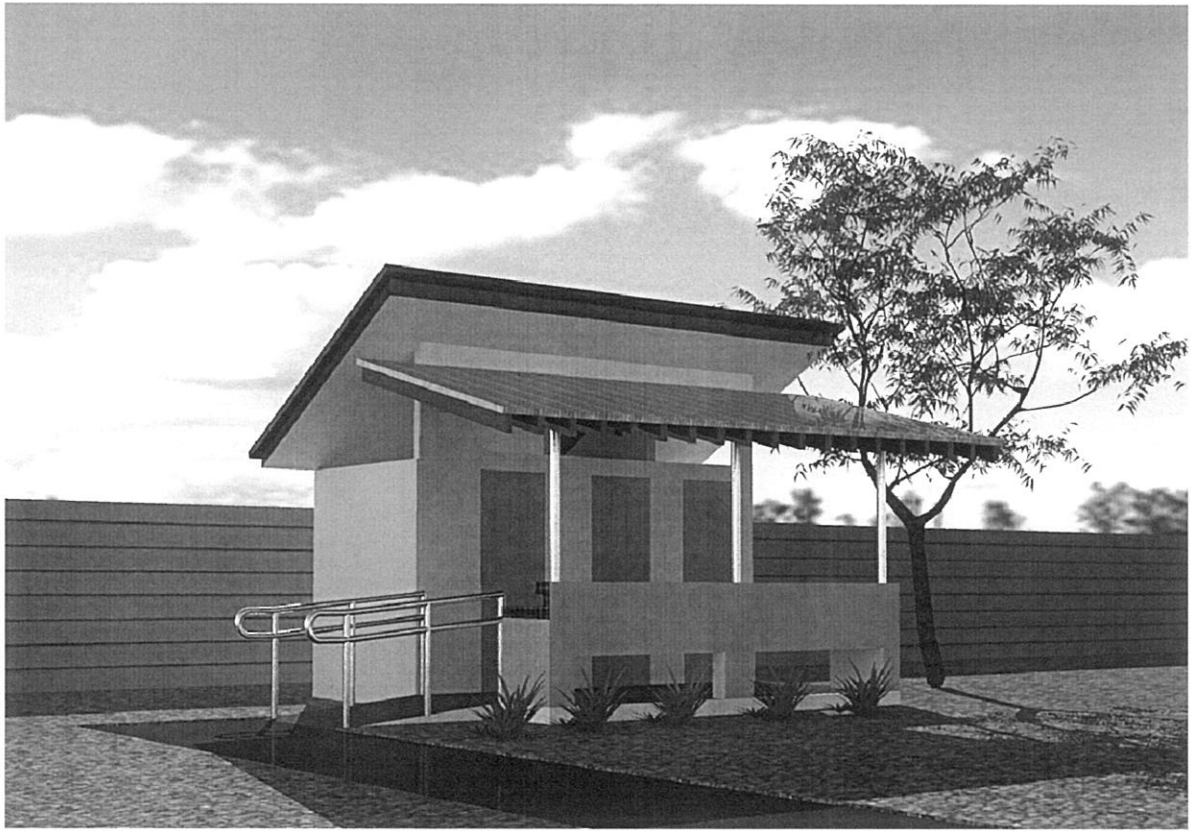
TWO SEATER SINGLE DETACHED  
(TYPE 1)



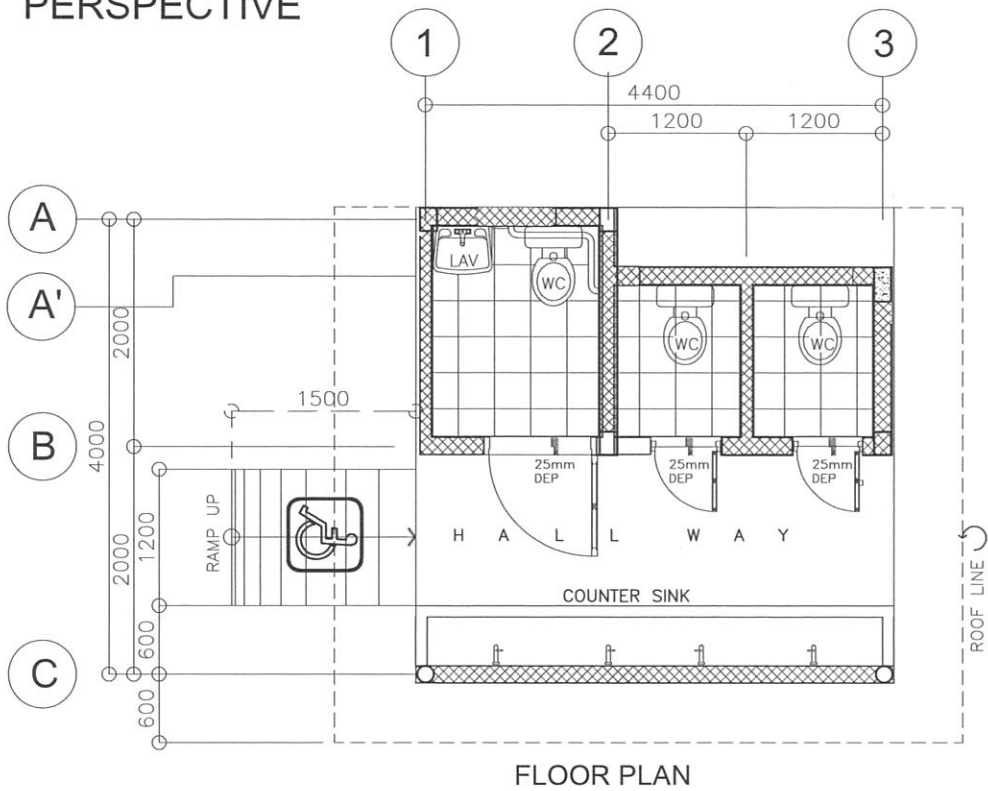
PERSPECTIVE



TWO SEATER SINGLE DETACHED  
(TYPE 2)



PERSPECTIVE



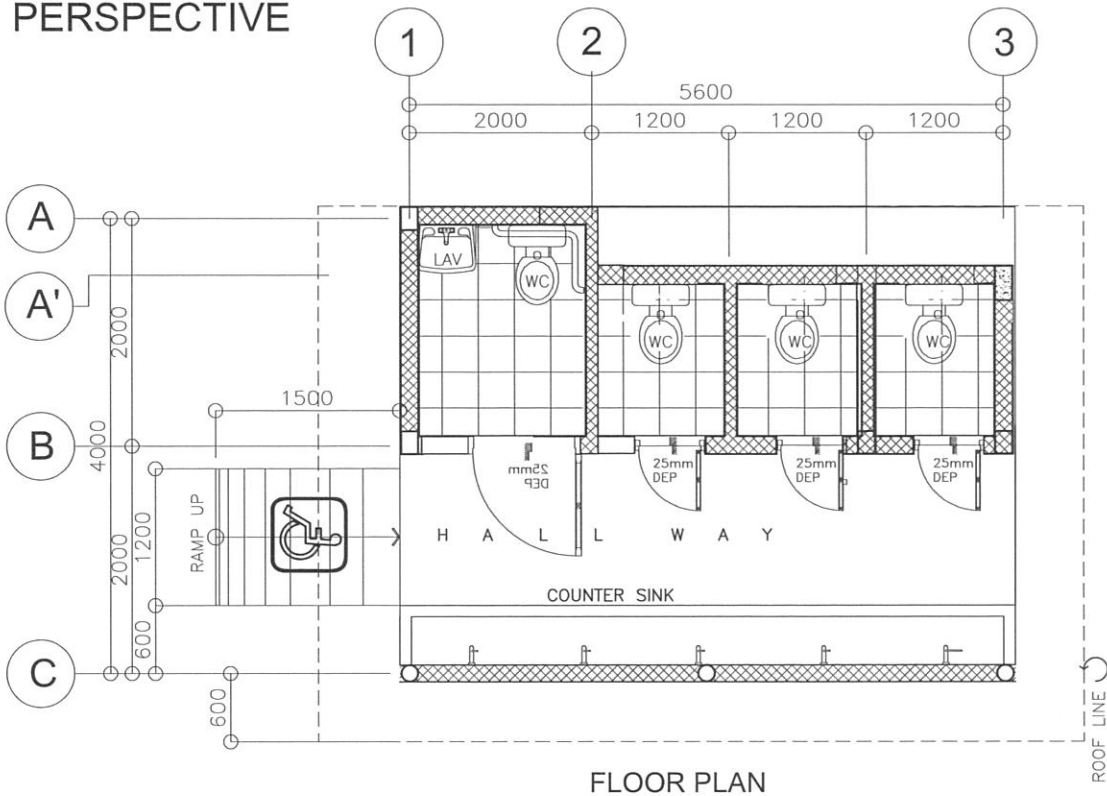
FLOOR PLAN

THREE SEATER SINGLE DETACHED  
(TYPE 3)



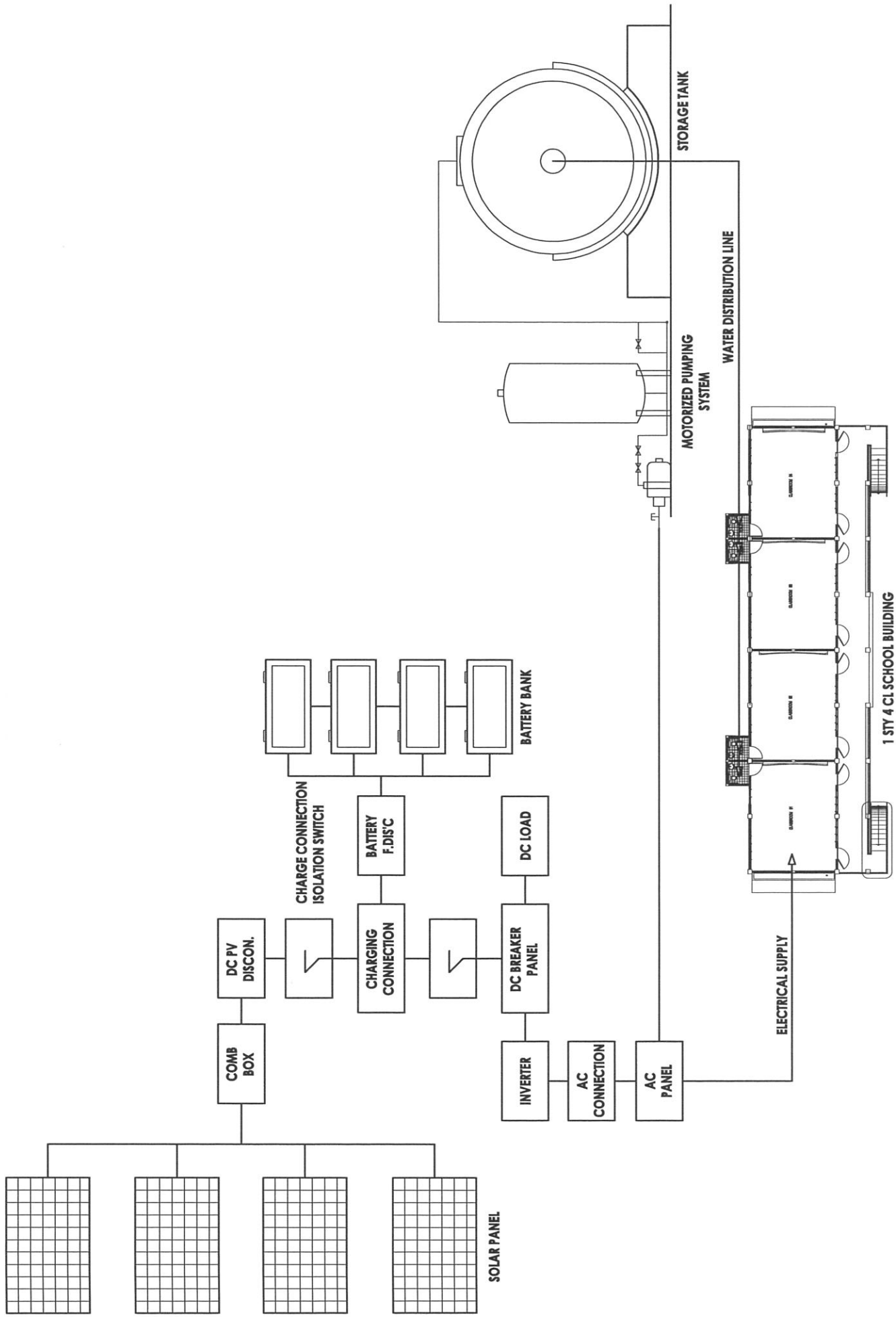


PERSPECTIVE



FLOOR PLAN

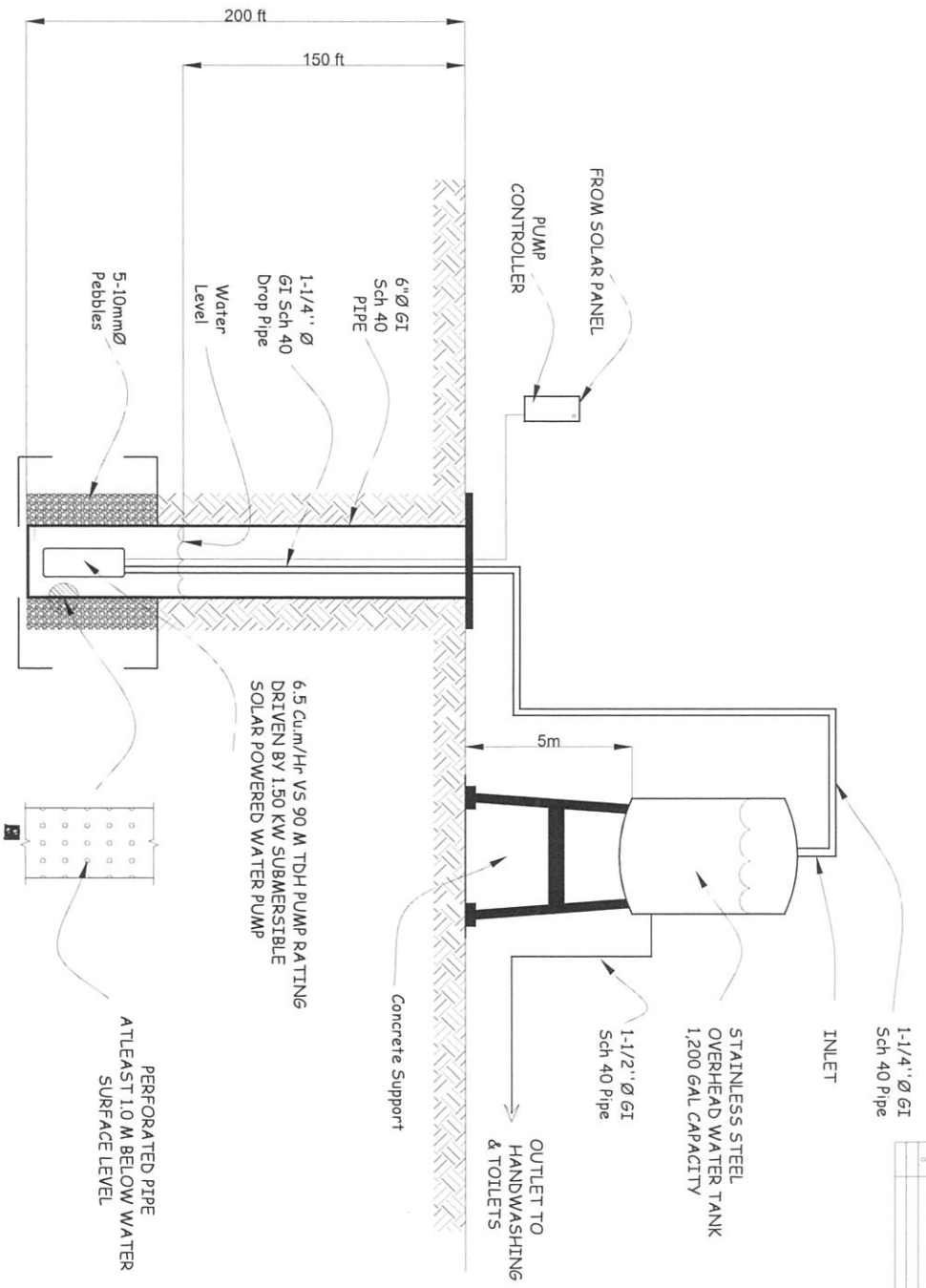
FOUR SEATER SINGLE DETACHED  
(TYPE 4)



**TYPICAL SOLAR SYSTEM INTERCONNECTION  
SINGLE LINE DIAGRAM**



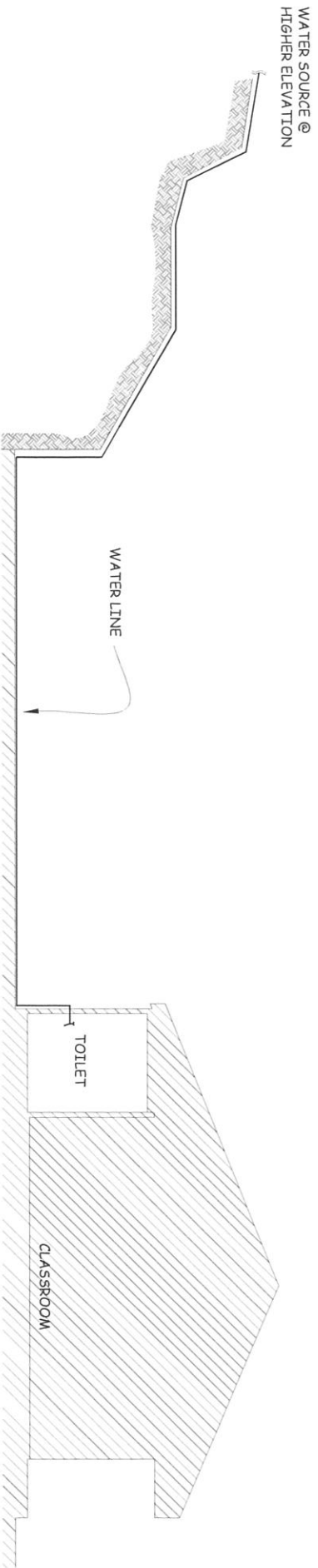
NO.	DESCRIPTION	BY	DATE
01			
02			
03			
04			
05			



## SCHEMATIC DIAGRAM OF PUMPING SYSTEM (OPTION 1)

REPUBLIC OF THE PHILIPPINES <b>DepED</b> DEPARTMENT OF EDUCATION DIVISION OFFICE - CALABARZON	DRAWN BY: <u>RELVAINE R. PUNLA</u> CHECKED BY: <u>DR. FRANCIS</u>	DESIGNER BY: <u>JET MARINO S. AUSTON</u> APPROVED BY: <u>_____</u>	CHECKED BY: <u>_____</u> APPROVED BY: <u>_____</u>	PROJECT TITLE: <b>WATER SYSTEM</b>	DEPARTMENT OF EDUCATION <b>DepED</b>	SCHEMATIC DRAWING	PROJECT NO.: _____ DRAWING NO.: _____ SHEET NO.: _____	SHEET NO. <b>13</b> OF <b>13</b> <b>0</b>
--	--	---	---	------------------------------------	---	-------------------	--	--

NO.	REVISIONS	BY	DATE
0			



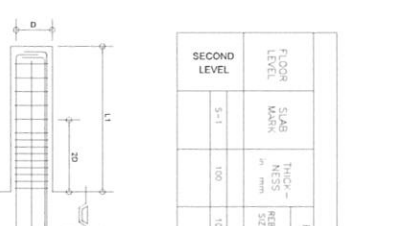
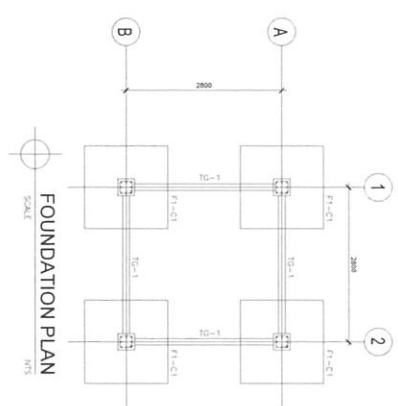
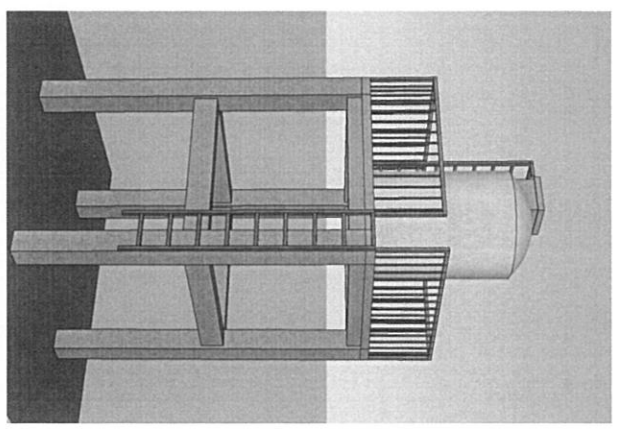
**SCHEMATIC DIAGRAM OF WATER SOURCE ELEVATION IS HIGHER THAN SCHOOL SITE (OPTION 2)**

DESIGNED BY	CHECKED BY	DATE	PROJECT NO.	PROJECT TITLE	PROJECT LOCATION	PROJECT DATE	PROJECT STATUS	PROJECT TYPE	PROJECT PHASE
REYDINE N. PERALTA DCE ENGINEER	ATY RAMON C. AQUINO MCHER		020202021	WATER SYSTEM	UNION, WALSLEY, AL. PHASE 01	2022	COMPLETED	DEPARTMENT OF EDUCATION DIPED	SCHEMATIC DIAGRAM



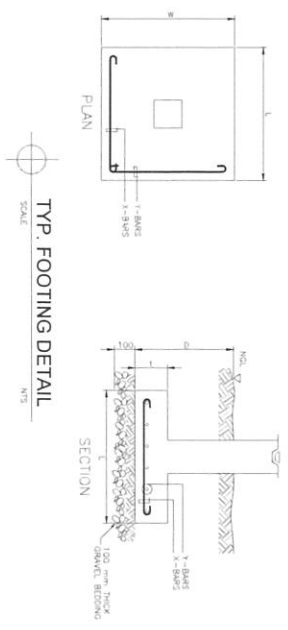
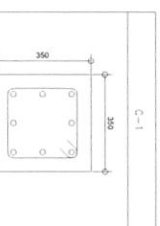


NO.	DESCRIPTION	HT	UNITED	DATE
0	0.1	0.1	XXX	2023/07/01



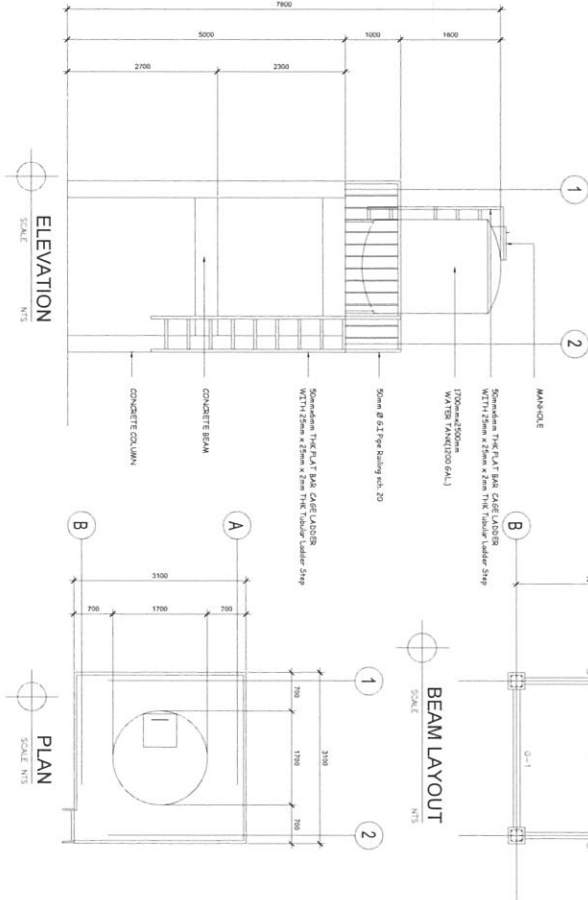
### BEAM SCHEDULE

FLOOR LEVEL	BEAM MARK	BEAM DIMS (mm)	STEEL REINFORCEMENTS						WEB BAR	STIRRUPS (LATEST HOTEL DIMENSIONS)
			REIN LEFT TOP	REIN LEFT BOT	REIN MID SPAN TOP	REIN MID SPAN BOT	REIN RIGHT TOP	REIN RIGHT BOT		
G-1	250	200 x 400	3	3	3	3	3	3	18-20, 30% 2, 50% 10, REST 20	
G-1	250	400 x 250	3	3	3	3	3	3	18-20, 30% 2, 50% 10, REST 20	



### SCHEDULE OF FOOTING

FOOTING MARK	FOOTING LENGTH (L)	FOOTING WIDTH (W)	FOOTING DEPTH (D)	REINFORCEMENT	REMARKS
F-1	1400	1400	1500	300	8 - 20mm BAR X 8 - 20mm BAR Y SQUARE FOOTING

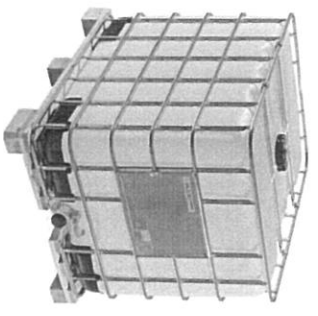


REPUBLIC OF THE PHILIPPINES  
DEPARTMENT OF EDUCATION  
BUREAU OF ASSISTANT SECRETARIES  
OFFICE OF THE ASSISTANT SECRETARY FOR TECHNICAL EDUCATION

PROJECT NO. SD-1  
PROJECT NAME: OVERHEAD WATER TANK

DESIGNER: JANECE P. CALLOS  
CHECKER: WILSON E. ALARCON  
APPROVER: LUIS G. ROSALES  
DATE: 07-01-23

NO.	REVISION	BY	DATE
0	0.0		000/00/00

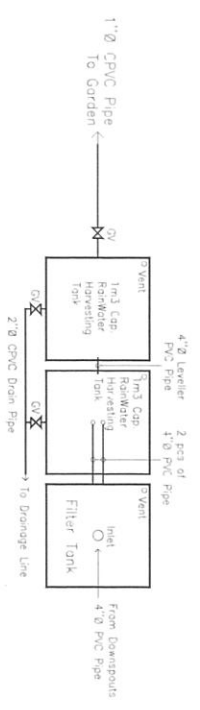


INTERMEDIATE BULK CONTAINER (IBC)  
 SPECIFIC-TONS:  
 CAPACITY 1,000L (1.00 Cu.m.)  
 SIZE 1.00M X 1.00M X 1.00M  
 WITH TUBE CAGE, PALLET AND 2" DIA. DISCHARGE VALVE With Screen at Inlet.

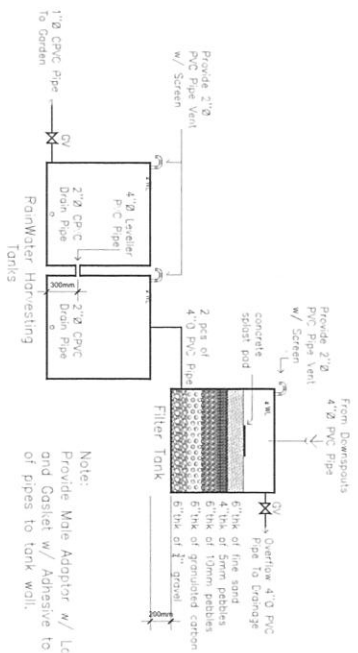
# RAINWATER HARVESTING TANK (RWHT)

1  
 RWHT-1a  
 SCALE

NTS



Top View



Elevations

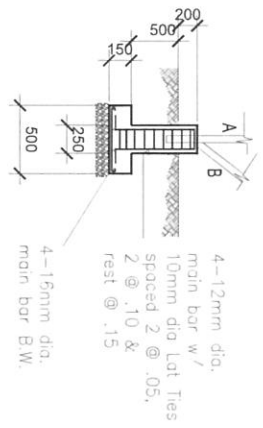
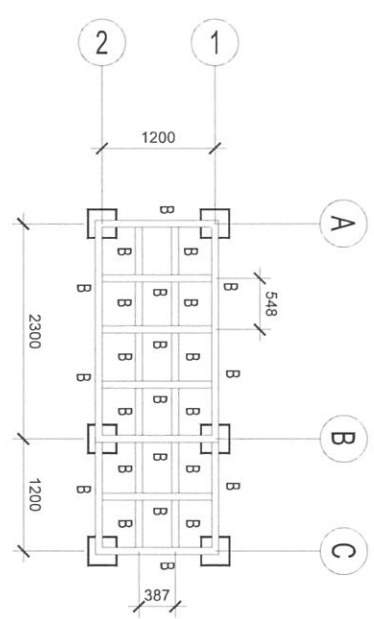
## ELEVATION & TOP VIEW (RWHT)

2  
 RWHT-1a  
 SCALE

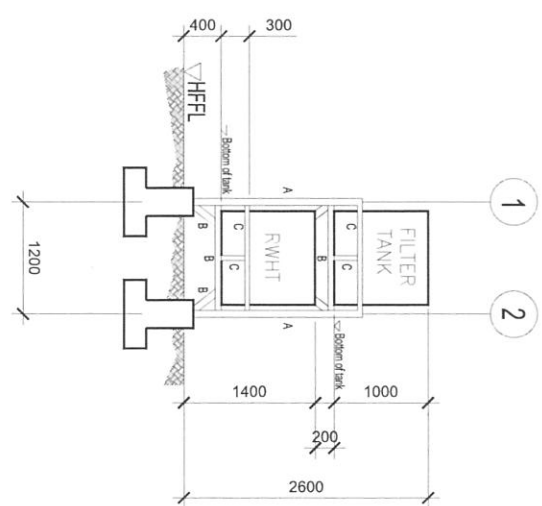
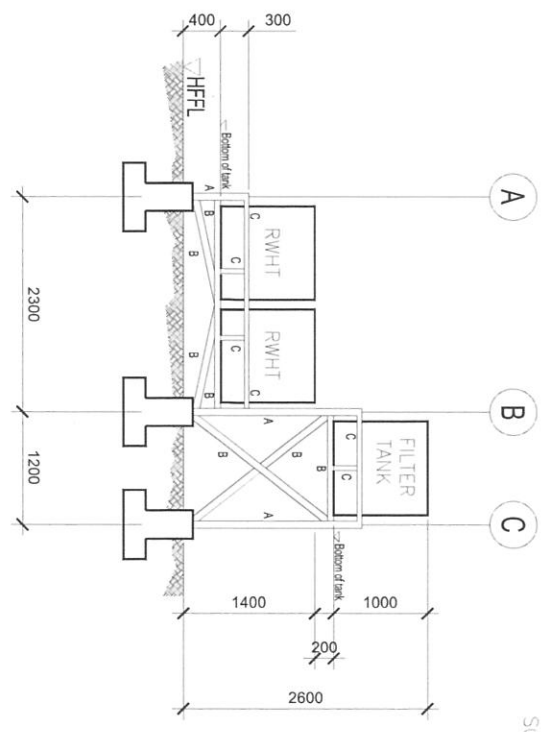
NTS

DEPARTMENT OF THE PRESIDENT <b>DepEd</b> DEPARTMENT OF EDUCATION REGIONAL OFFICE - DAVAO DIVISION OFFICE - DAVAO CITY	DESIGNED BY: BELANE N. PERALTA SOO DESIGNER	CHECKED BY: ET. MARINO C. ALARCON ARCHITECT	APPROVED BY: CHRISTOPHER J. MARO MASTER PLANNER	HYDROLOGICAL APPROVAL: LUIS O. RIVERALA, JR. ASST. CHIEF, IIS	APPROVED BY: ANABELLE P. PANGAN CHIEF, IIS	PROJECT TITLE: <b>Rain Water Collector</b>	DEPARTMENT OF EDUCATION <b>DepEd</b>	CONTRACT NO. SCHEMATIC DRAWING	PROJECT NO. DRAWING NO. CHECKED BY: DESIGNED BY: DATE	SHEET NO. <b>13</b> OF <b>18</b>
---	---	---	---	---	--	---	---	-----------------------------------	---	---

REV	DESCRIPTION	BY	DATE
0			



Mark	Members Size	Thickness mm	Welds Length mm	Remarks
A	L100x100x6	6	L1 L2 L3	Provide firm tank
B	L75x75x6	6	Full Weld	Provide Connector @ connections
C	L65x65x6	6	Full Weld	of members



1  
RWHT-1b  
SCALE  
**RWHT SUPPORT**  
NTS

REPUBLIC OF THE PHILIPPINES <b>DepEd</b> DEPARTMENT OF EDUCATION DIVISION OFFICE - CAGAYAN DE ORO	DIVISION OFFICER BELANIE N. PUNJALIA DSO OFFICER	DIVISION OFFICER REY PABONG S. ALABON ASST. DIV. OFFICER	DIVISION OFFICER CHRISTOPHER L. MARIG ASST. DIV. OFFICER	DIVISION OFFICER LUIS S. PANGSUA, JR. ASST. DIV. OFFICER	DIVISION OFFICER ANABELLE P. PANGON DIV. OFFICER	PROJECT TITLE <b>Rain Water Collector</b>	DIVISION OFFICER DEPARTMENT OF EDUCATION <b>DepEd</b>	DIVISION OFFICER SCHEMATIC DRAWING	PROJECT NO. DRAWING NO. SHEET NO.	SHEET NO. <b>19</b> OF NO. <b>0</b>
--	--	--	--	--	--	--	---	---------------------------------------	---	--



## Solar "PV" Panel System



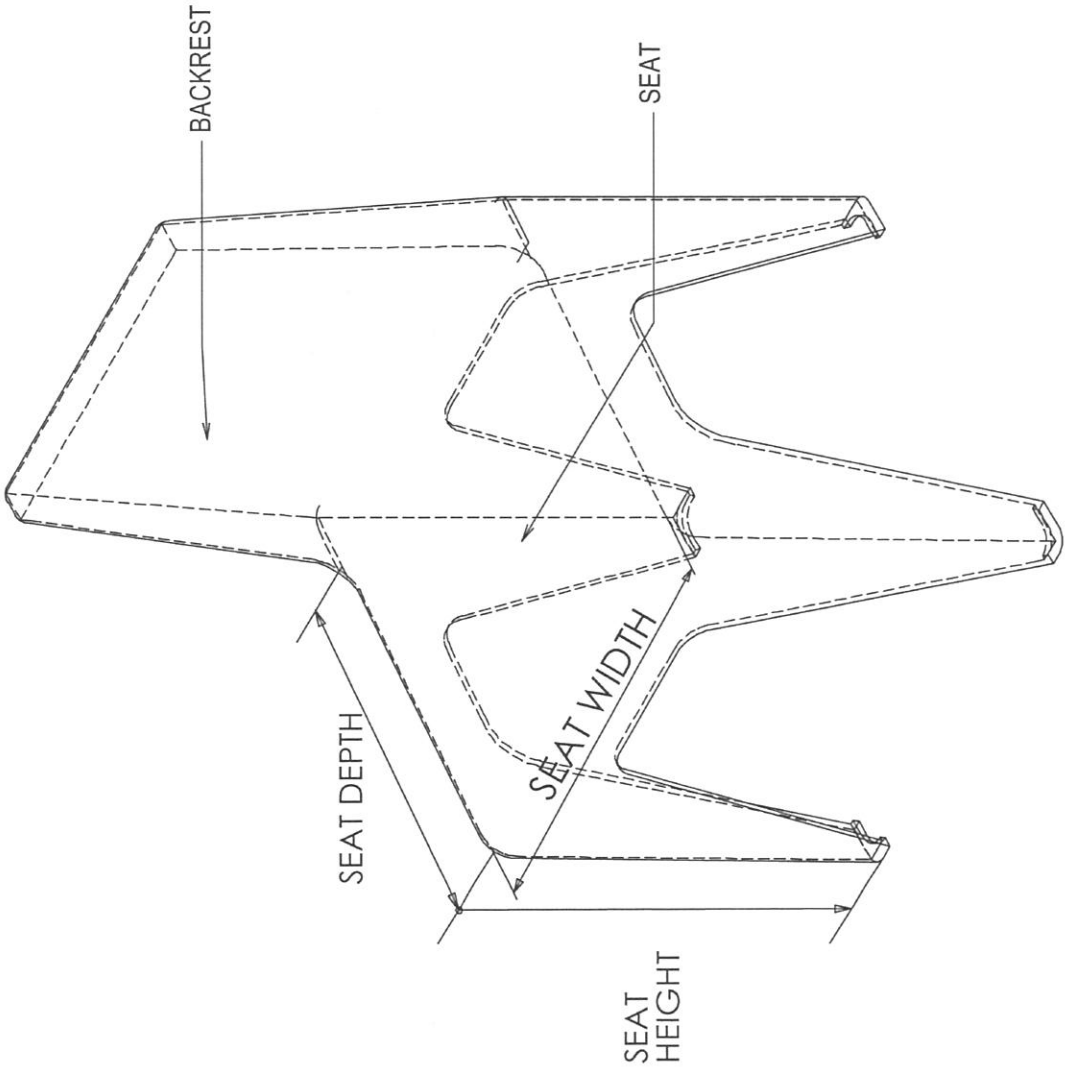
### *General provisions:*

- Can energize the electrical needs of four (4) classrooms
- Provision of electrical power for computers or I.T. set-up
- Charging station
- Pole-mounted perimeter lighting system
- Solar Water Pumping Station

### *Technical Specifications:*

#### **12kw Off-grid Solar Panel System**

- Polycrystalline Solar Panels
- Solar Charge Controller
- 180,800 Wh/day Maximum Capacity Battery
- 12,000 Watts Power Inverter
- PV Combine Box, MC4 Connectors & Inter-Connection Wires
- AC & DC Surge Lighting Protection Device
- Power Distribution Panels
- Complete roof/area mounting kit
- Complete Set of 6000k CCT, Crisp White Auto Switch on/off, Wireless, Pole-mount G.I. lamp pole
- Complete set of 1.5Kw Solar-powered Water Pump with 90 meters Pump Head, 6.5 cu.m/Hr. flow



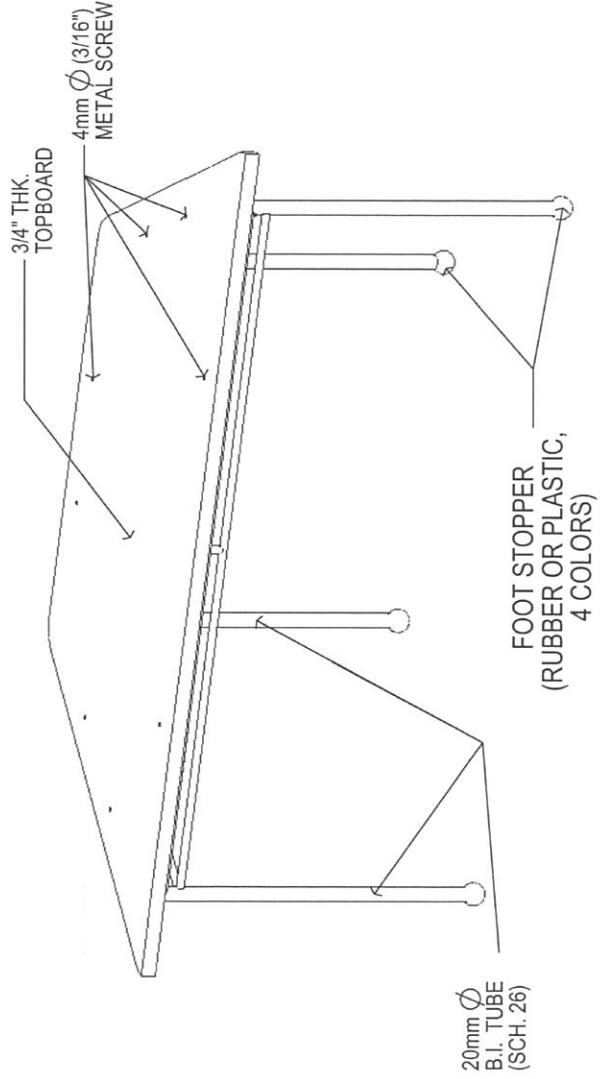
DIMENSIONS OF  
CHAIR IN MILLIMETERS KINDERGARTEN

LEVEL	DIMENSIONS
A SEAT HEIGHT	300 ± 20MM
B SEAT DEPTH	280 ± 20MM
C SEAT WIDTH	280 (MIN)
D BACKREST HT.	450 (MIN)

**ISOMETRIC VIEW**  
SCALE: NTS

DIMENSIONS OF PREPARATORY  
TABLE IN MILLIMETERS

LEVEL	DIMENSIONS	REMARKS
A TABLE HEIGHT	460	ALL DIMENSIONS SHALL BE SUBJECTED TO A MAX. TOLERANCE OF PLUS OR MINUS 10mm
B TABLE WIDTH	520	
C TABLE LENGTH	1180	



TECHNICAL SPECIFICATION

TOP BOARD	520mm x1180mm x 19(3/4")mm, MARINE PLY WOOD
STRUCTURAL FRAME	20mm $\varnothing$ B.I. TUBE (SCH. 20)
RUBBER FOOTINGS	1pc.-YELLOW, 1pc.-GREEN, 1pc.-RED, 1pc.-BLUE
JOINTS	FULLY WELDED
FINISHES	TOP BOARD - 2 COATS FLAT ENAMEL; FINAL COAT - QUICK DRY ENAMEL (GLOSSY) STEEL - 3 COATS QUICK DRY ENAMEL (SKYBLUE)

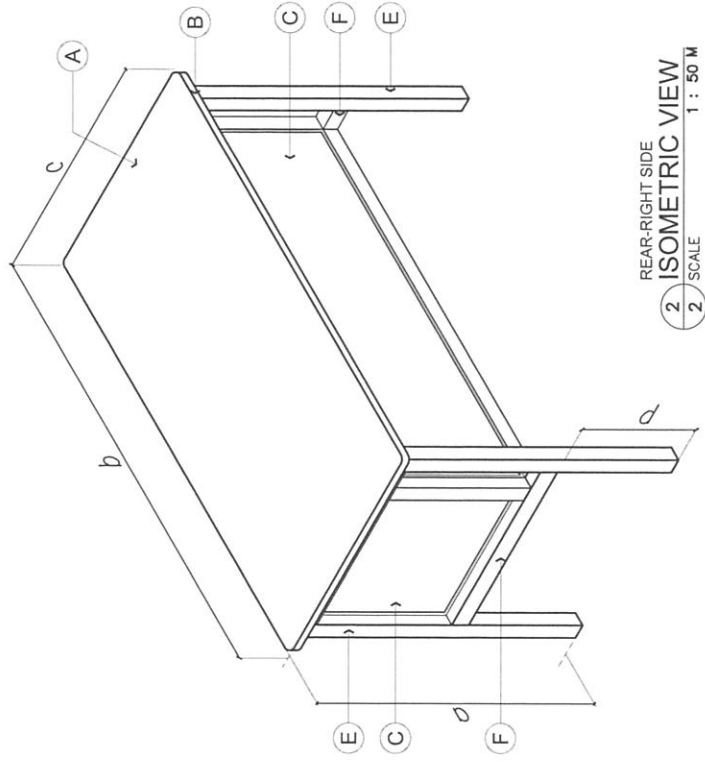
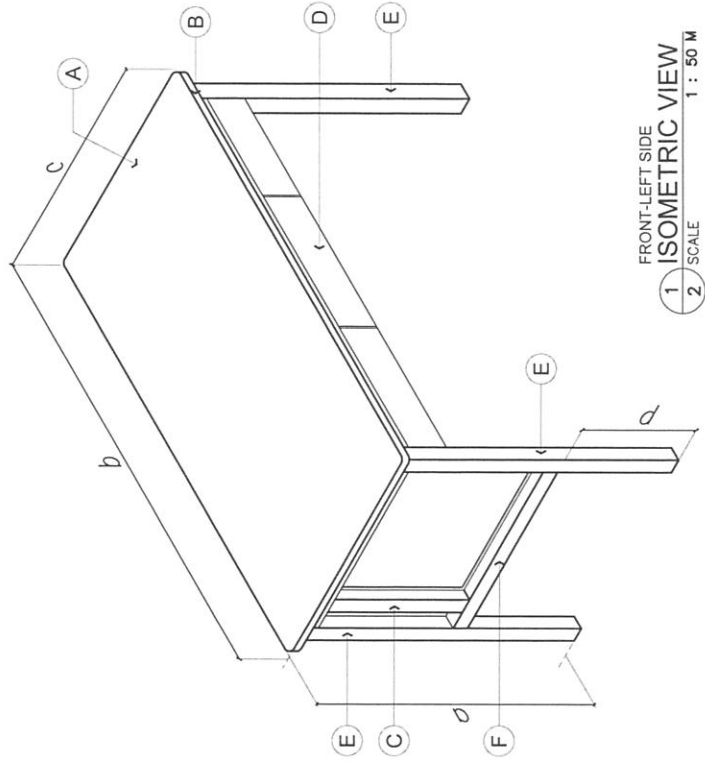
**ISOMETRIC VIEW**  
SCALE: NTS

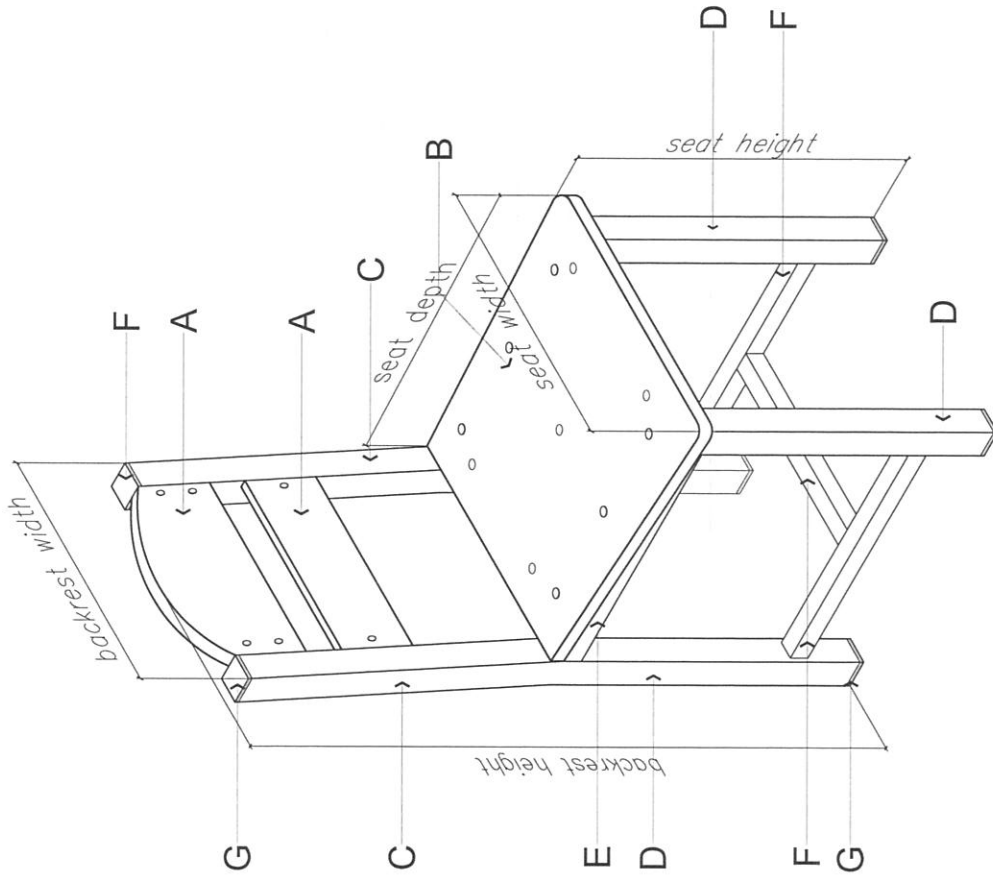
DIMENSIONS OF TEACHER'S TABLE (mm)

MARK	COMPONENT	DIMENSION	REMARKS
a	TABLE HEIGHT	750	ALL DIMENSIONS SHALL BE SUBJECTED TO A MAXIMUM TOLERANCE OF PLUS OR MINUS 8mm
b	TABLE LENGTH	1200	
c	TABLE WIDTH	600	
d	SIDINGS/BACKING HEIGHT	300	
SCHEDULE OF FINISHES			
TABLE TOP & SIDINGS		HIGH PRESSURE LAMINATE (HPL) WHITE OAK WOOD GRAIN WITH 1mm THK PVC EDGING	
DRAWERS		(REFER TO DETAILS - SHEET NO. 6)	
STEEL		POWDER COATED; BLACK - GLOSSY	

TECHNICAL SPECIFICATIONS OF TEACHER'S TABLE

MARK	COMPONENT	SPECIFICATIONS	REMARKS
A	TABLE TOP	18mm THK MARINE PLYWOOD	ALL CORNERS SHALL BE ROUNDED: TABLE TOP CORNERS SHALL HAVE 25mm RADIUS ALL STEEL CONNECTIONS SHALL BE FULLY WELDED
B	EDGING	1mm THK THK PVC EDGING	
C	SIDING/BACKING	6mm THK MARINE PLYWOOD	
D	DRAWER	(REFER TO DETAILS - SHEET NO. 6-7)	
E	LEG	38mmx38mmx0.8mm THK STEEL TUBULAR	
F	FRAME	38mmx38mmx0.8mm THK STEEL TUBULAR (MAIN) 25mmx25mmx1mm THK STEEL TUBULAR (SECONDARY)	
	FOOT/LEG END CAP	4mm THK BLACK HARD PLASTIC	
	DRAWER SUPPORT	18mmx18mmx1mm THK STEEL TUBULAR	
	DRAWER GUIDE SUPPORT	25mmx3mm THK STEEL FLAT BAR	
	DRAWER GUIDE	14"x36mm BALL BEARING SLIDE RAIL	
	CONNECTORS	25mmx25mmx3mm THK STEEL FLAT BAR WITH SCREW: 3mm $\phi$ , 12mm LENGTH	
	U-FRAME	8mmx8mmx2mm THK STEEL U-FRAME (ALL EDGES)	SHALL BE ON FRONT COVER AND SIDINGS





1 TECHNICAL SPECIFICATIONS OF TEACHER'S CHAIR		
MARK	COMPONENT	SPECIFICATIONS
A	BACKREST	18mm THK MARINE PLYWOOD
B	SEAT	18mm THK MARINE PLYWOOD W/ 5 VENT HOLES
C	BACKREST SUPPORT	38mmx38mmx0.8mm THK STEEL TUBULAR
D	LEG	38mmx38mmx0.8mm THK STEEL TUBULAR
E	SEAT SUPPORT	25mmx25mmx1mm THK STEEL TUBULAR
F	LEG BRACE	25mmx25mmx1mm THK STEEL TUBULAR
G	PIPE END COVER/CAP	4mm THK RUBBER OR HARD PLASTIC
	CONNECTORS	
		6mm $\phi$ CARRIAGE ROUND HEAD NUT & BOLT
	BACKREST - 1	25mmx75mmx3mm THK FLAT BAR
	BACKREST - 2	25mmx50mmx3mm THK FLAT BAR
	SEAT	25mmx300mmx3mm THK FLAT BAR
2	SCHEDULE OF FINISHES	
	MARINE PLYWOOD	HIGH PRESSURE LAMINATE WHITE OAK WOOD GRAIN & 1mm THK PVC EDGING (FINISH SURFACE SHALL BE EVEN & WITH NO BUBBLES)
	STEEL	POWDER COATED (BLACK); SMOOTH, GLOSSY FINISH
		ALL STEEL CONNECTIONS SHALL BE FULLY WELDED
3	DIMENSIONS OF TEACHER'S CHAIR (mm)	
	COMPONENT	DIMENSIONS (mm)
	SEAT HEIGHT	440 ( $\pm 10$ )
	SEAT DEPTH	400 ( $\pm 10$ )
	SEAT WIDTH	400 ( $\pm 10$ )
	BACKREST HEIGHT	850 ( $\pm 10$ )
	BACKREST WIDTH	350 ( $\pm 10$ )

1 ISOMETRIC- TEACHER'S CHAIR  
SCALE 1 - M

TECHNICAL SPECIFICATIONS OF STUDENT TABLE

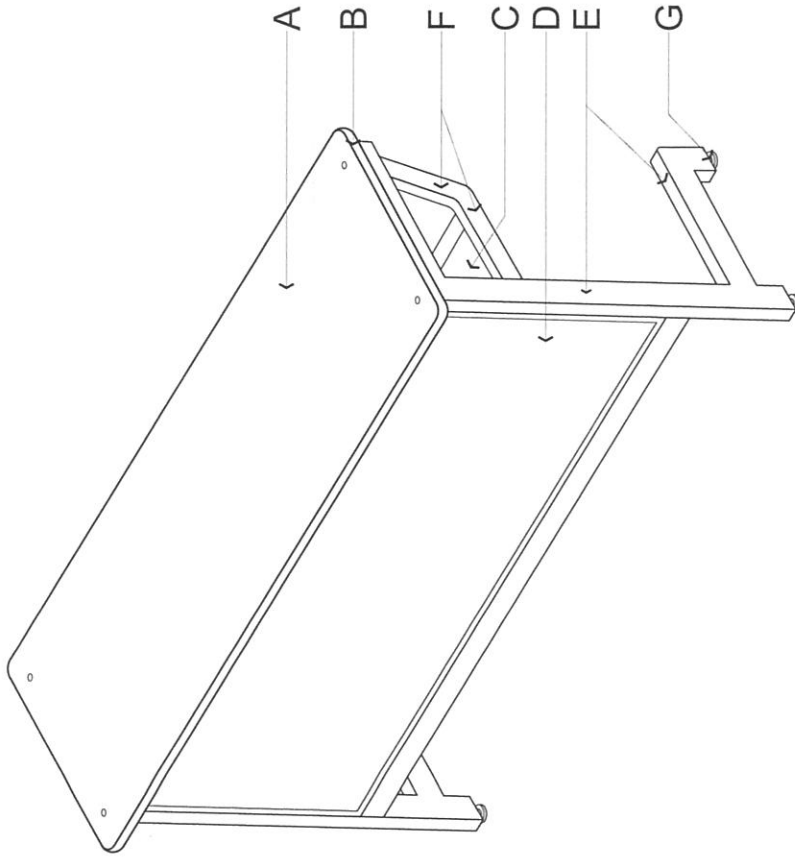
MARK	COMPONENT	SPECIFICATIONS
A	TABLE TOP	18mm THK TOP BOARD WITH ROUND CORNERS (0.9mm THK HIGH PRESSURE <u>WHITE_OAK_WOOD_GRAIN</u> LAMINATE ON MARINE PLYWOOD)
B	EDGING	1mm THK PVC EDGING
C	SHELF	6mm THK MARINE PLYWOOD W/ 0.9mm HIGH PRESSURE <u>WHITE_OAK_WOOD_GRAIN</u> LAMINATE
D	FRONT COVER	6mm THK MARINE PLYWOOD W/ 0.9mm HIGH PRESSURE <u>WHITE_OAK_WOOD_GRAIN</u> LAMINATE
E	MAIN FRAME	25mmx50mmx1mm THK STEEL TUBULAR
F	SECONDARY FRAME	18mmx37mmx1mm THK STEEL TUBULAR
G	ADJUSTABLE LEVELER	12mmøx50mm (THREAD SIZE) with 40mmø PLASTIC BASE
	FLAT BAR	25mmx50mmx3mm THK; 25mmx25mmx3mm THK
	FINISH	REFER TO SCHEDULE OF FINISHES
	U-FRAME	10mmx10mmx2mm THK STEEL (ALL EDGES OF FRONT COVER)
	CONNECTION	WOOD TO STEEL: SCREW; 6mmø ROUND HEAD CARRIAGE BOLT STEEL TO STEEL: <u>FULL_WELDING</u>

SCHEDULE OF FINISHES

TOP BOARD	HIGH PRESSURE <u>WHITE_OAK_WOOD_GRAIN</u> LAMINATE w/ 1.0mm THK PVC EDGING
FRONT COVER	HIGH PRESSURE <u>WHITE_OAK_WOOD_GRAIN</u> LAMINATE w/ STEEL U-FRAME ON ALL EDGES (SEE DETAILS 6 & 7)
SHELF	HIGH PRESSURE <u>WHITE_OAK_WOOD_GRAIN</u> LAMINATE
STEEL TUBULAR	ALL SURFACE SHALL BE POWDER COATED (BLACK); GLOSSY FINISH

DIMENSIONS OF STUDENT TABLE (mm)

MARK	COMPONENT	DIMENSIONS	
		ELEMENTARY	SECONDARY
a	TABLE HEIGHT	670 (±10)	710 (±10)
b	TABLE LENGTH	1200	1200
c	TABLE WIDTH	400	400



1 ISOMETRIC VIEW  
1 SCALE - M



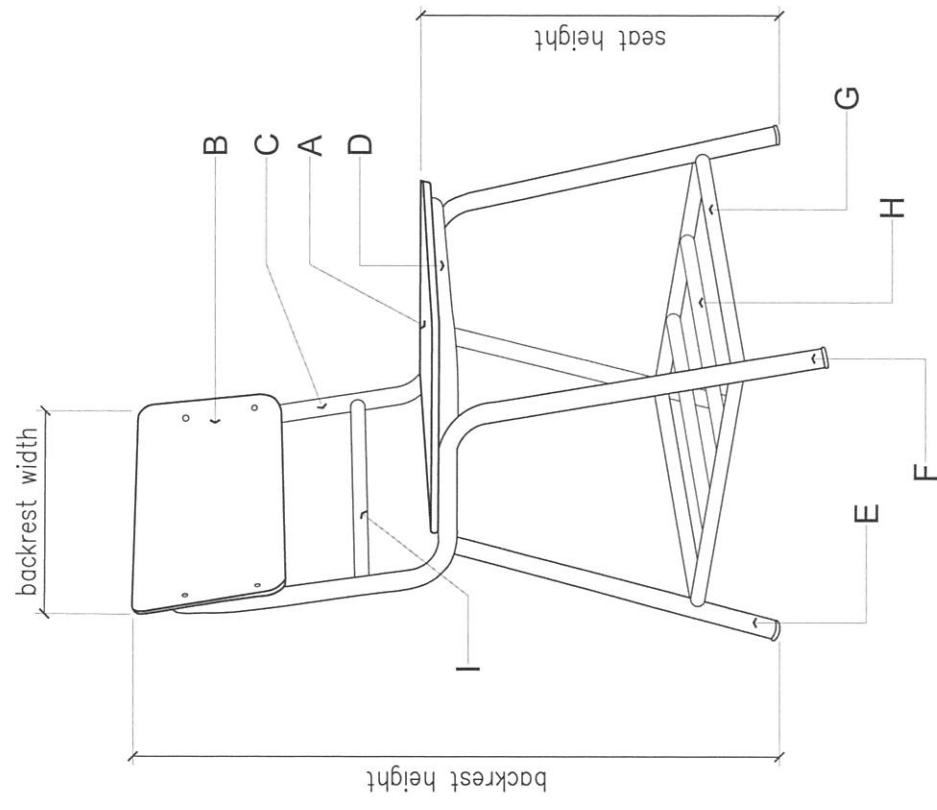
TECHNICAL SPECIFICATIONS OF STUDENT CHAIR		
MARK	COMPONENT	SPECIFICATIONS
A	SEAT	18mm THK MARINE PLYWOOD
B	BACKREST	18mm THK MARINE PLYWOOD
C	BACKREST SUPPORT	22mm $\phi$ B.I. PIPE
D	SEAT SUPPORT	22mm $\phi$ B.I. PIPE
E	BACK LEG	22mm $\phi$ B.I. PIPE
F	FRONT LEG	22mm $\phi$ B.I. PIPE
G	LEG SUPPORT	22mm $\phi$ B.I. PIPE
H	SHELF	22mm $\phi$ B.I. PIPE
I	CROSS RAIL / LOWER BACK SUPPORT	22mm $\phi$ B.I. PIPE
	PIPE END COVER/CAP	4mm THK RUBBER OR HARD PLASTIC
	CONNECTORS	
	WOOD & STEEL	6mm $\phi$ CARRIAGE ROUND HEAD NUT & BOLT; 25mmx50mmx3mm STEEL FLAT BAR

SCHEDULE OF FINISHES

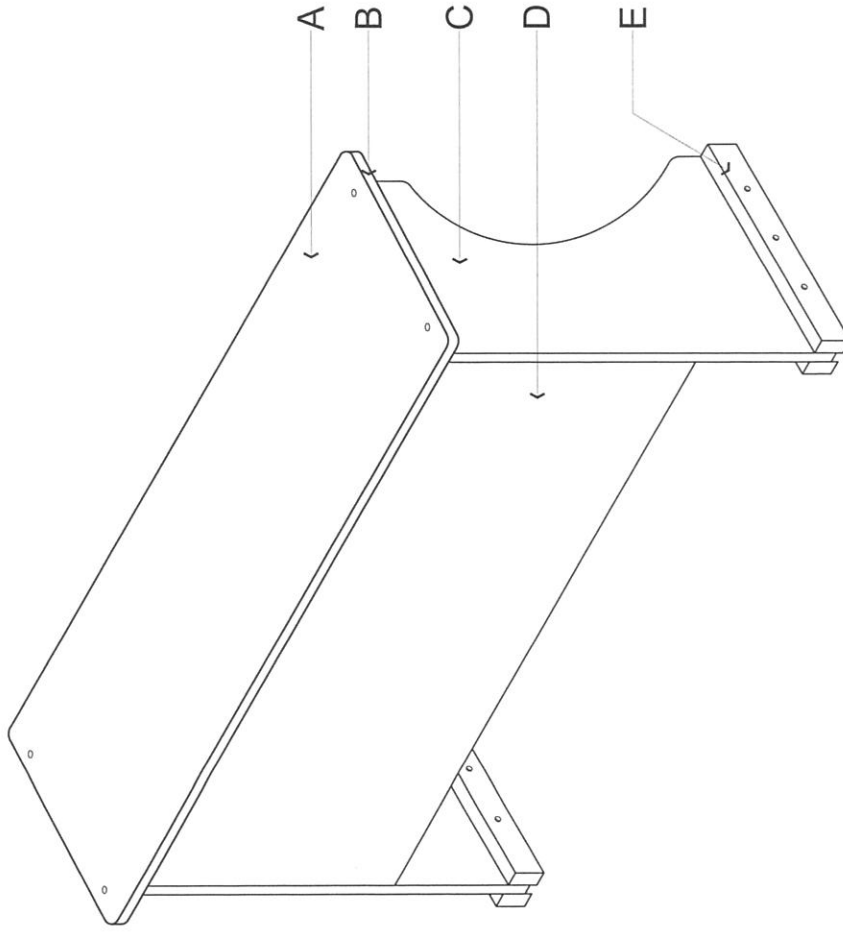
MARINE PLYWOOD	0.9mm THK HIGH PRESSURE WHITE OAK WOOD GRAIN LAMINATE w/ 1.0mm THK PVC EDGING
STEEL / BI PIPE	ALL SURFACE SHALL BE POWDER COATED (BLACK)

DIMENSIONS (mm)

COMPONENT	ELEMENTARY	SECONDARY
SEAT HEIGHT	390 ( $\pm 10$ )	410 ( $\pm 10$ )
SEAT DEPTH	400 ( $\pm 10$ )	400 ( $\pm 10$ )
SEAT WIDTH	400 ( $\pm 10$ )	400 ( $\pm 10$ )
BACKREST HEIGHT	800 ( $\pm 10$ )	800 ( $\pm 10$ )
BACKREST WIDTH	400 ( $\pm 10$ )	400 ( $\pm 10$ )



1 ISOMETRIC- STUDENT CHAIR  
1 SCALE - M



1 ISOMETRIC VIEW  
1 SCALE - M

NOTE: ALL SOLID WOOD MUST BE TREATED (SUN-DRIED OR KILN-DRIED)  
SPECIE: TANGUILE, GEMELINA OR RED LAUAN  
HPL: HIGH PRESSURE LAMINATE

1 TECHNICAL SPECIFICATIONS OF STUDENT TABLE

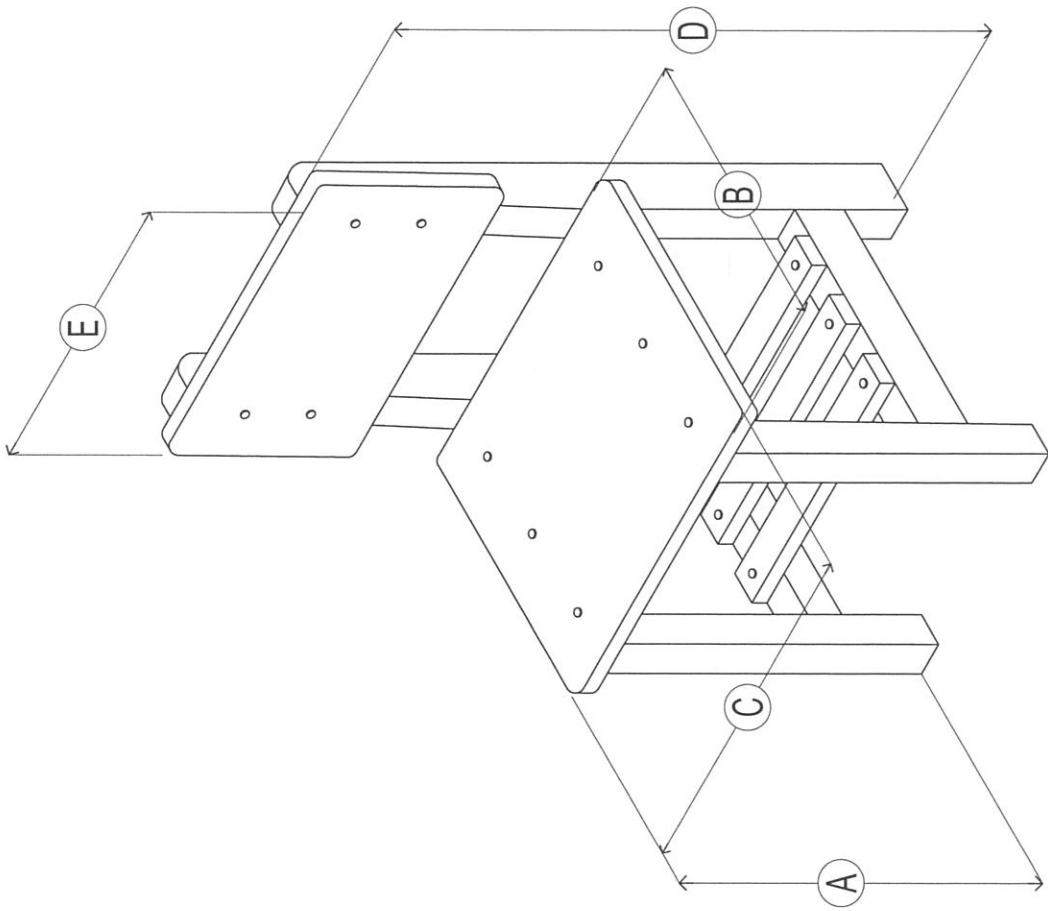
MARK	COMPONENT	SPECIFICATIONS
A	TABLE TOP	18mm THK TOP BOARD WITH ROUND CORNERS (0.9mm THK HIGH PRESSURE <u>WHITE OAK WOOD GRAIN</u> LAMINATE ON MARINE PLYWOOD)
B	EDGING	1mm THK PVC EDGING
C	LEG / SIDE COVER	18mm THK BOARD WITH ROUND CORNERS (0.9mm THK HIGH PRESSURE <u>WHITE OAK WOOD GRAIN</u> LAMINATE ON MARINE PLYWOOD) WITH 1mm THK PVC EDGING
D	FRONT COVER	18mm THK BOARD (0.9mm THK HIGH PRESSURE <u>WHITE OAK WOOD GRAIN</u> ON MARINE PLYWOOD)
E	LEG CLIP	25mmx45mm (1"x2") SOLID WOOD
	SHELF	6mm THK BOARD (0.9mm THK HIGH PRESSURE WOOD GRAIN LAMINATE ON MARINE PLYWOOD)
	TOP BOARD SUPPORT	25mmx25mm (1"x1") SOLID WOOD
	FRONT COVER SUPPORT SHELF SUPPORT	25mmx25mm (1"x1") SOLID WOOD
	FINISH	REFER TO SCHEDULE OF FINISHES
	CONNECTION	6mmØ ROUND HEAD CARRIAGE NUT & BOLT ; SCREW; FINISHING NAIL

2 SCHEDULE OF FINISHES

TOP BOARD	0.9mm THK HIGH PRESSURE <u>WHITE OAK WOOD GRAIN</u> LAMINATE w/ 1.0mm THK PVC EDGING
LEGS & FRONT COVER	0.9mm THK HIGH PRESSURE <u>WHITE OAK WOOD GRAIN</u> LAMINATE w/ 1mm THK PVC EDGING
SHELF	0.9mm THK HIGH PRESSURE <u>WHITE OAK WOOD GRAIN</u> LAMINATE
SOLID WOOD FRAME	ALL SURFACES TO BE COATED SHALL BE SMOOTHLY SANDED; 3 COATS OF QUICK-DRY ENAMEL; COLOR SHALL BE SAME AS COLOR OF HPL

3 DIMENSIONS OF STUDENT TABLE (mm)

MARK	COMPONENT	DIMENSIONS	
		ELEMENTARY	SECONDARY
a	TABLE HEIGHT	670 (±10)	710 (±10)
b	TABLE LENGTH	1200	1200
c	TABLE WIDTH	400	400



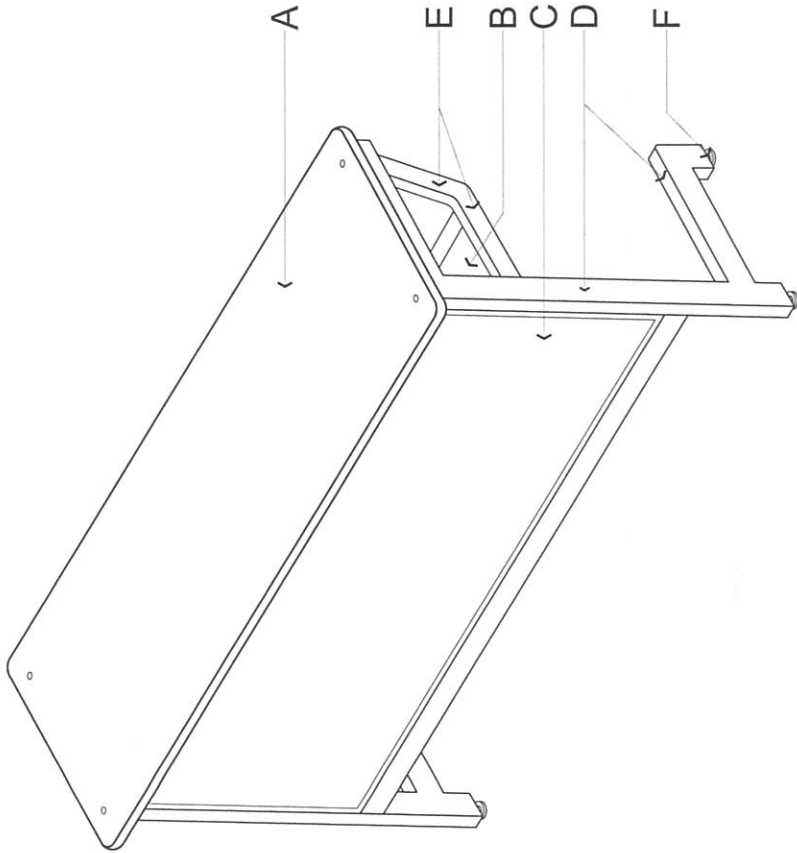
**ISOMETRIC VIEW**  
 SCALE: NTS

DIMENSIONS (mm)		
COMPONENT	ELEMENTARY	SECONDARY
A SEAT HEIGHT	390 (±10)	410 (±10)
B SEAT DEPTH	400 (±10)	400 (±10)
C SEAT WIDTH	400 (±10)	400 (±10)
D BACKREST HEIGHT	800 (±10)	800 (±10)
E BACKREST WIDTH	400 (±10)	400 (±10)

2	TECHNICAL SPECIFICATIONS	REMARKS
SEAT	18mm THK MARINE PLYWOOD W/ 0.9mm THK HIGH PRESSURE LAMINATE WHITE_OAK_WOOD_GRAIN & 1mm THK PVC EDGING	ALL THICKNESS OF WOOD EXCEPT FOR MARINE PLYWOOD SHALL BE SUBJECT TO A TOLERANCE OF PLUS OR MINUS 2mm.  ALL SOLID WOOD MUST BE TREATED SUN DRIED OR KILN-DRIED. SPECIE: TANGUILE, GEMELINE, RED LAUAN  ALL CORNERS SHALL BE ROUND WITH 25mm RADIUS
FRONT LEG	45mmx45mm, SOLID WOOD	
BACK LEG	45mmx70mm, SOLID WOOD	
BACKREST	18mm THK MARINE PLYWOOD W/ 0.9mm THK HIGH PRESSURE LAMINATE WHITE_OAK_WOOD_GRAIN & 1mm THK PVC EDGING	
BACKREST SUPPORT	45mmx45mm SOLID WOOD	
BOOK SHELF	3-20mmx45mm SOLID WOOD	
LEG BRACE	45mmx45mm SOLID WOOD	
FINISHES	SEAT AND BACKREST – HIGH PRESSURE LAMINATE WHITE OAK WOOD GRAIN W/ 1mm THK PVC EDGING  WOOD – SMOOTH FINISH WITH AT LEAST 3 COATS VARNISH, COLOR SHALL BE SAME AS COLOR OF HPL IN STUDENT TABLE	
CONNECTORS	6mm CARRIAGE NUT & BOLT; WOOD SCREW; FINISHING NAILS	

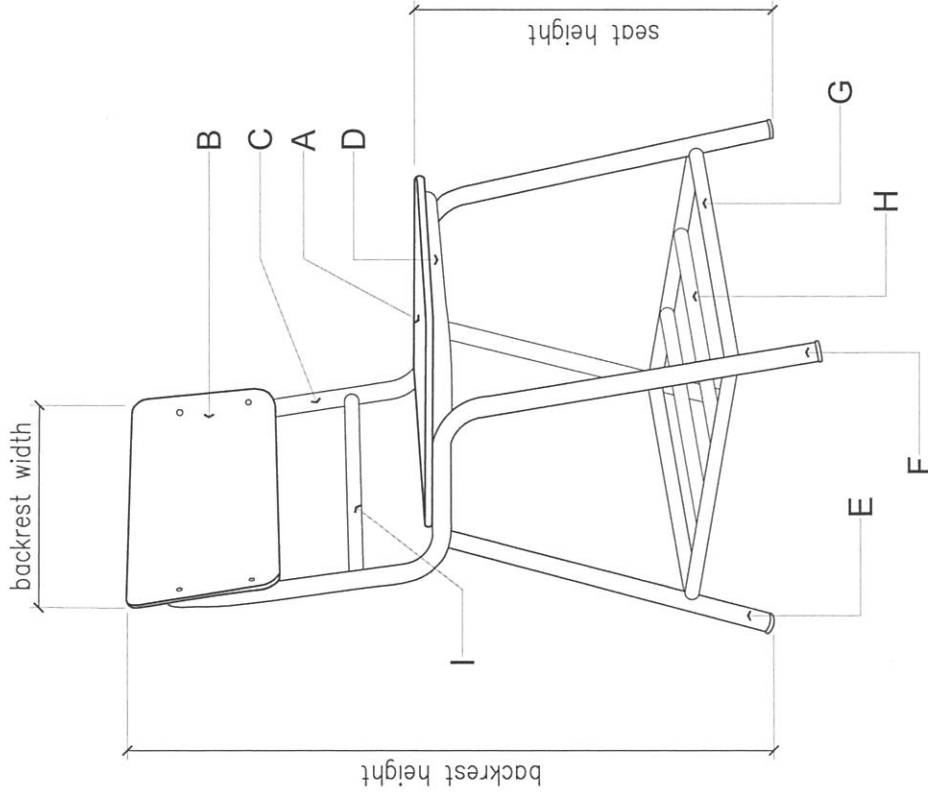
### TECHNICAL SPECIFICATIONS OF STUDENT TABLE

MARK	COMPONENT	SPECIFICATIONS	
A	TABLE TOP	15mm THK E-BAMBOO TOP BOARD WITH ROUND CORNERS & EDGES	
B	SHELF	15mm THK E-BAMBOO	
C	FRONT COVER	6mm THK MARINE PLYWOOD W/ 0.9mm THK HIGH PRESSURE LAMINATE (HPL) - <u>WHITE OAK WOOD GRAIN</u>	
D	MAIN FRAME	25mmx50mmx1mm THK STEEL TUBULAR	
E	SECONDARY FRAME	18mmx37mmx1mm THK STEEL TUBULAR	
F	ADJUSTABLE LEVELER	12mmx50mm (THREAD SIZE) with 40mm $\phi$ PLASTIC BASE	
	FLAT BAR	25mmx50mmx3mm THK; 25mmx25mmx3mm THK	
	U-FRAME	10mmx10mmx2mm THK STEEL (ALL EDGES OF FRONT COVER)	
	FINISH	REFER TO SCHEDULE OF FINISHES	
	CONNECTION	E-BAMBOO TO STEEL: SCREW, 6mm $\phi$ ROUND HEAD CARRIAGE BOLTS STEEL TO STEEL: <u>FULL WELDING</u>	
SCHEDULE OF FINISHES			
	TOP BOARD SHELF	3 COATS OF VARNISH (SPRAY APPLICATION) WRITING SURFACE SHOULD BE SMOOTH	
	FRONT COVER	0.9mm THK HIGH PRESSURE LAMINATE ( <u>WHITE OAK WOOD GRAIN</u> )	
	STEEL TUBULAR	ALL SURFACE SHALL BE POWDER COATED (BLACK)	
DIMENSIONS OF STUDENT TABLE (mm)			
MARK	COMPONENT	DIMENSIONS	
		ELEMENTARY	SECONDARY
a	TABLE HEIGHT	670 ( $\pm 10$ )	710 ( $\pm 10$ )
b	TABLE LENGTH	1200	1200
c	TABLE WIDTH	400	400

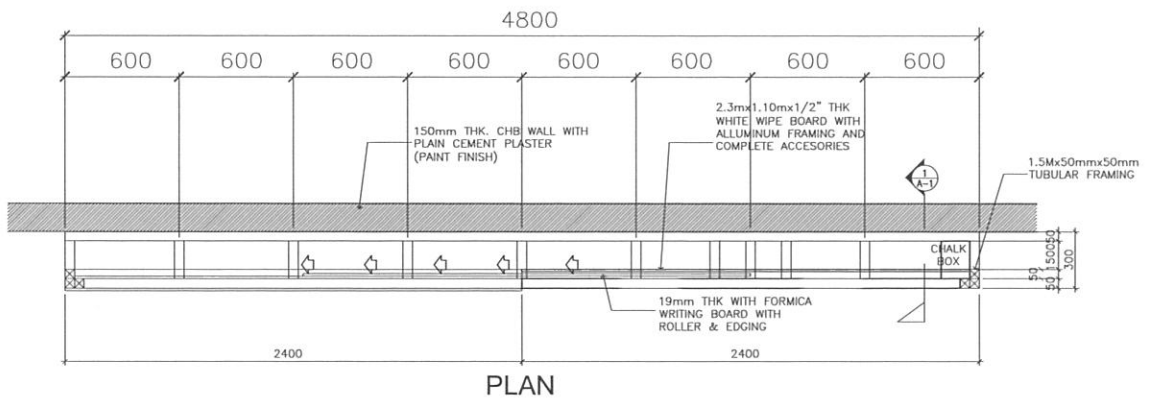
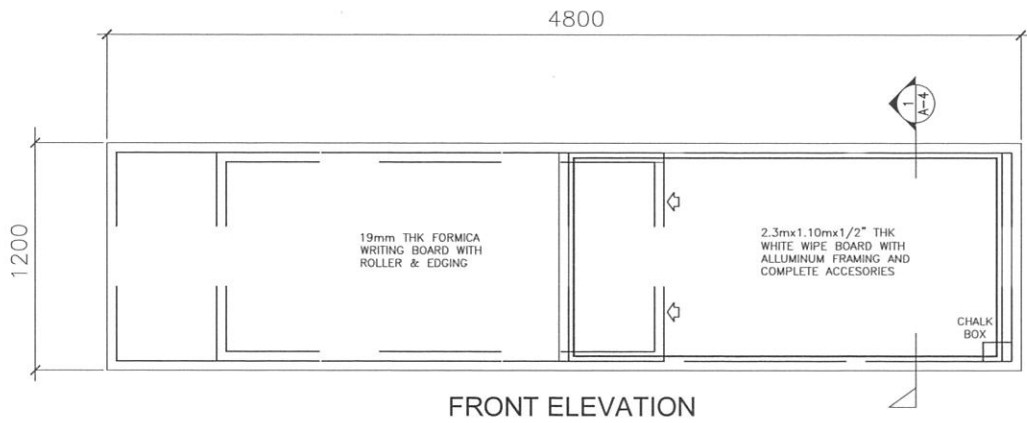
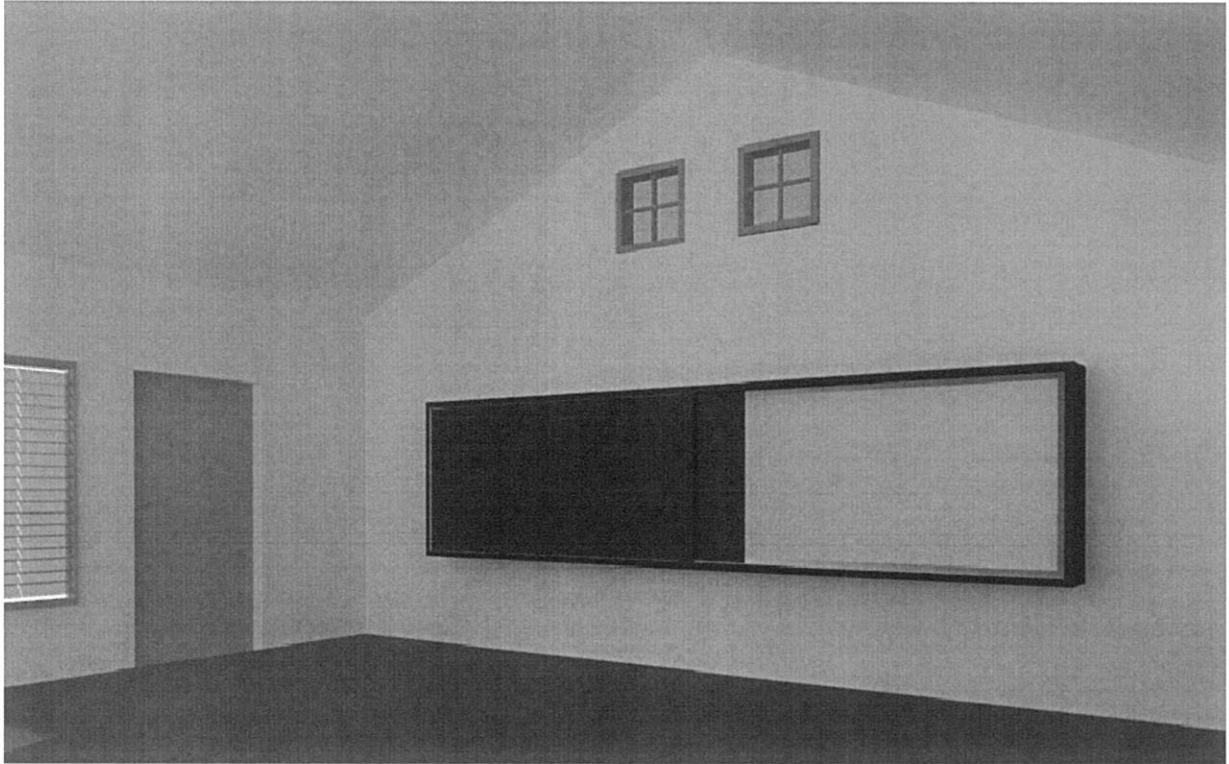


1 ISOMETRIC VIEW  
1 SCALE — M

TECHNICAL SPECIFICATIONS OF STUDENT CHAIR		
MARK	COMPONENT	SPECIFICATIONS
A	SEAT	15mm THK E-BAMBOO; ROUND CORNERS
B	BACKREST	15mm THK E-BAMBOO; ROUND CORNERS
C	BACKREST SUPPORT	22mm $\phi$ B.I. PIPE
D	SEAT SUPPORT	22mm $\phi$ B.I. PIPE
E	BACK LEG	22mm $\phi$ B.I. PIPE
F	FRONT LEG	22mm $\phi$ B.I. PIPE
G	LEG SUPPORT	22mm $\phi$ B.I. PIPE
H	SHELF	22mm $\phi$ B.I. PIPE
I	CROSS RAIL / LOWER BACK SUPPORT	22mm $\phi$ B.I. PIPE
	PIPE END COVER/CAP	4mm THK RUBBER OR HARD PLASTIC
	CONNECTORS	
	E-BAMBOO & STEEL	6mm $\phi$ CARRIAGE ROUND HEAD NUT & BOLT
SCHEDULE OF FINISHES		
E-BAMBOO	3 COATS OF VARNISH - SPRAY APPLICATION ALL SURFACES SHALL BE SMOOTH	
STEEL / BI PIPE	ALL SURFACE SHALL BE POWDER COATED (BLACK)	
DIMENSIONS (mm)		
COMPONENT	ELEMENTARY	SECONDARY
SEAT HEIGHT	390 ( $\pm 10$ )	410 ( $\pm 10$ )
SEAT DEPTH	400 ( $\pm 10$ )	400 ( $\pm 10$ )
SEAT WIDTH	400 ( $\pm 10$ )	400 ( $\pm 10$ )
BACKREST HEIGHT	800 ( $\pm 10$ )	800 ( $\pm 10$ )
BACKREST WIDTH	400 ( $\pm 10$ )	400 ( $\pm 10$ )

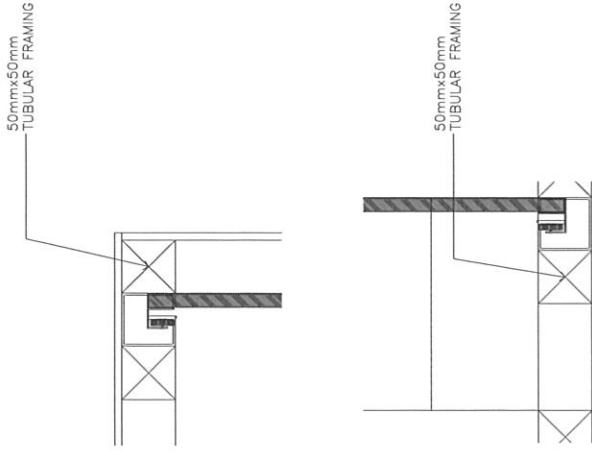


1 ISOMETRIC-STUDENT CHAIR  
SCALE 1 - M

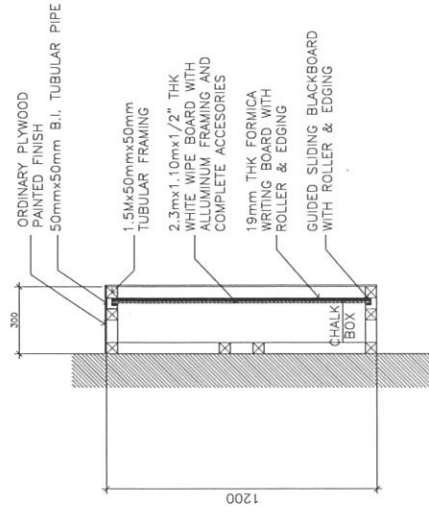


## PROPOSED BLACKBOARD

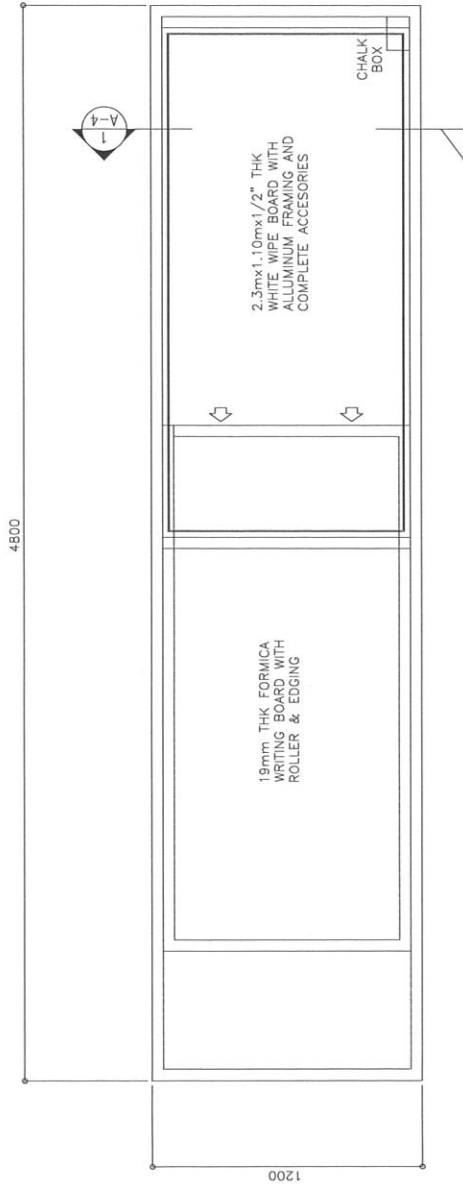




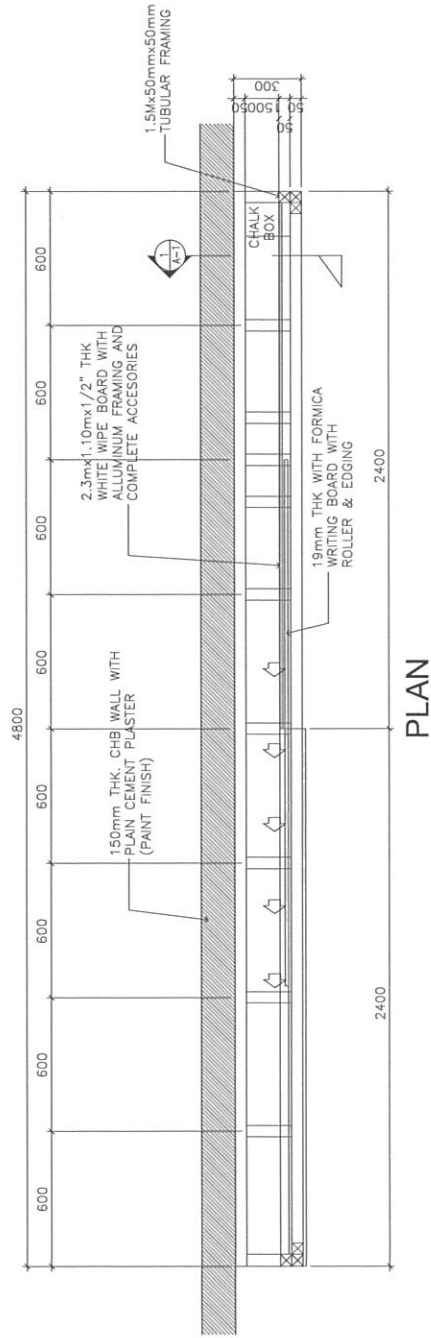
SPOT DETAIL



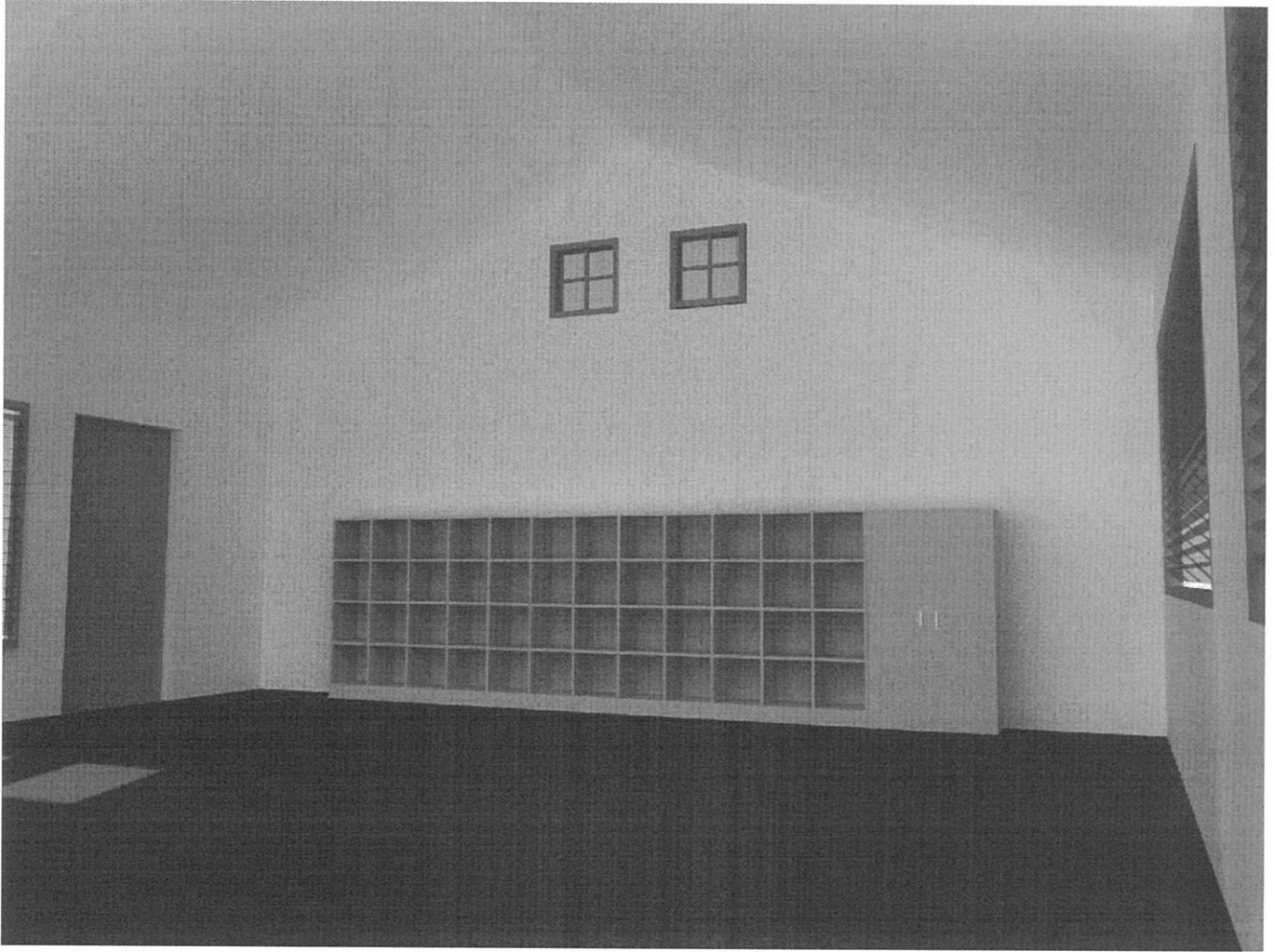
SECTION / ELEVATION



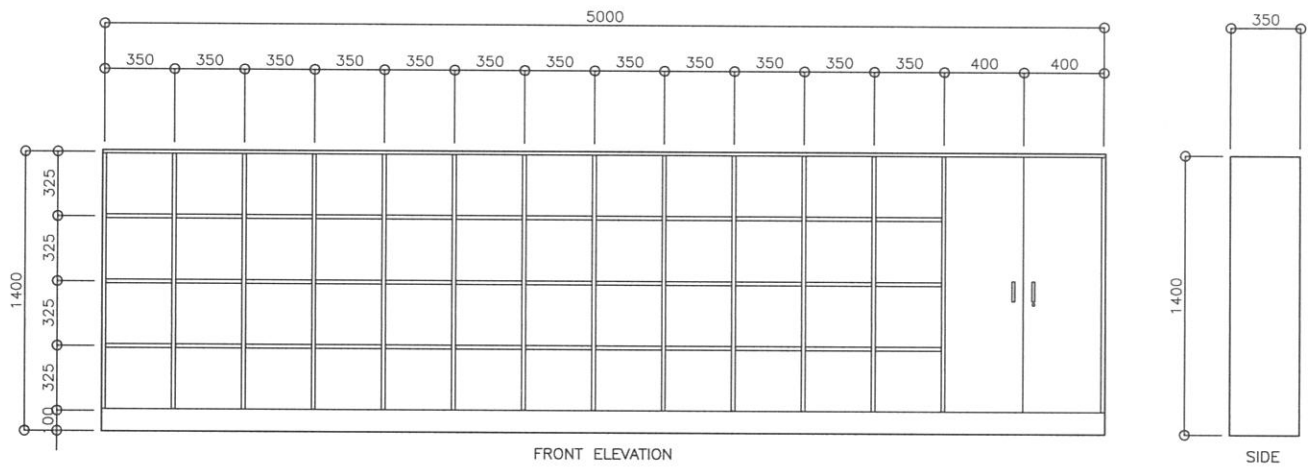
FRONT ELEVATION



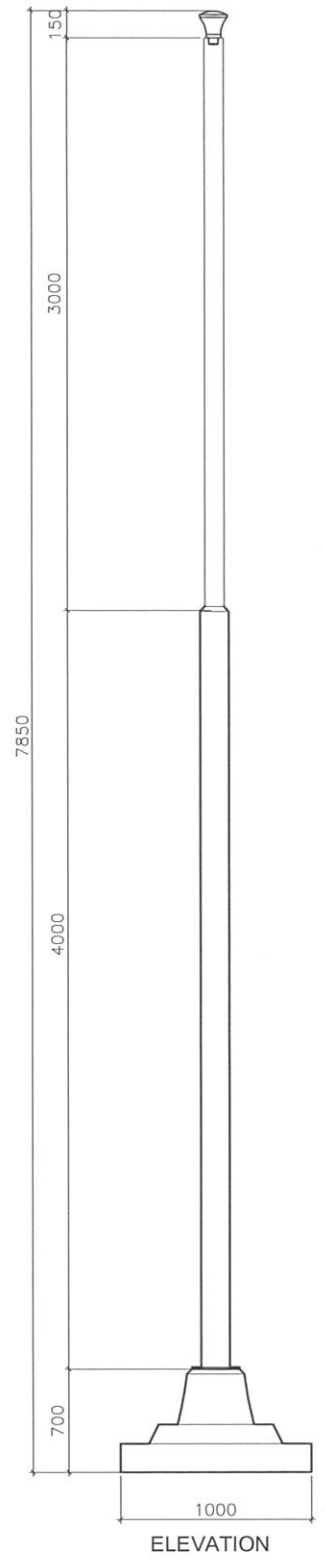
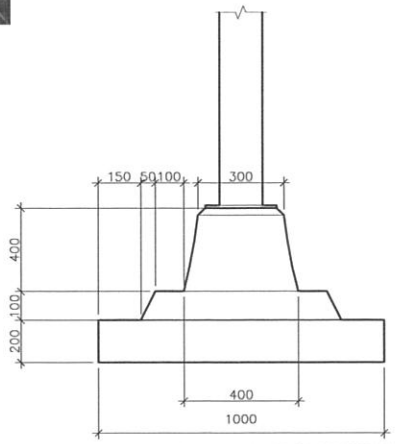
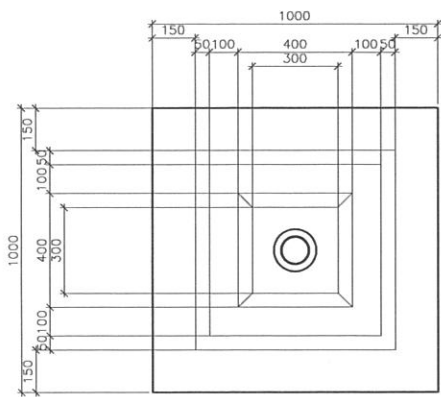
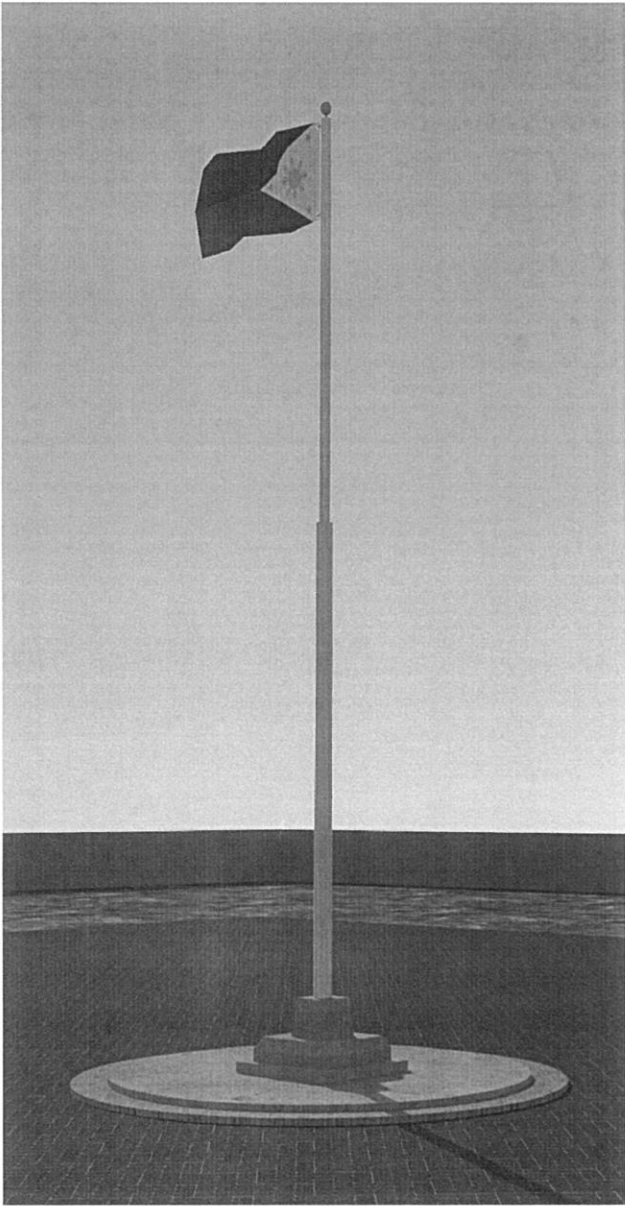
# PROPOSED BLACKBOARD



PERSPECTIVE



PROPOSED CLASSROOM CABINET



## PROPOSED FLAGPOLE