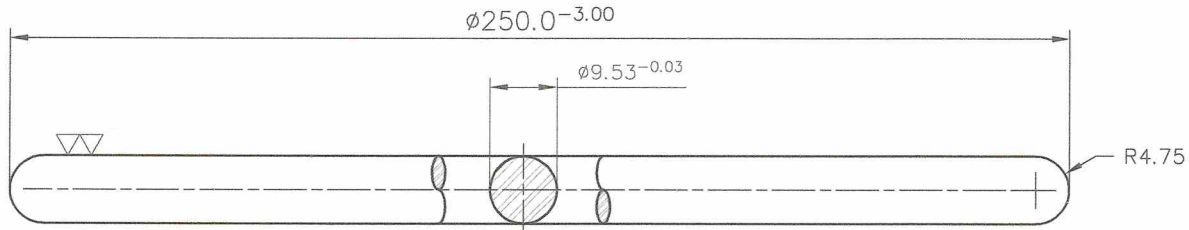
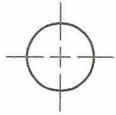


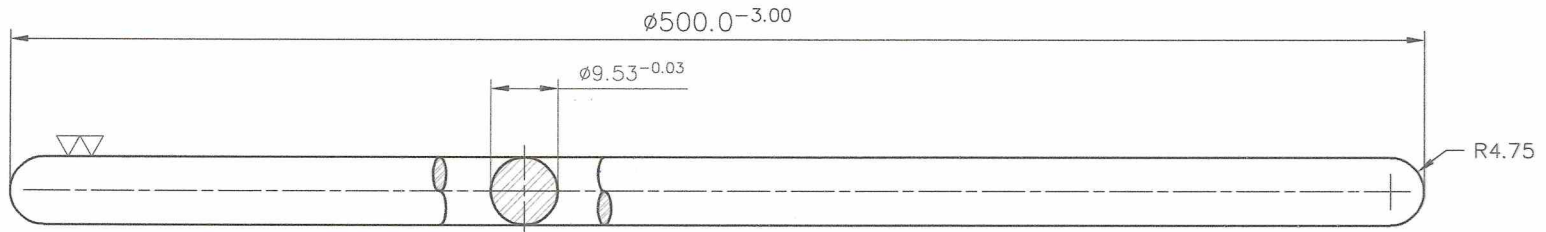
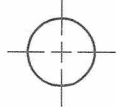
SCIKIT-BASIC

NOTE:
Max. allowable linear deflection, measured at the center, is 0.065mm.



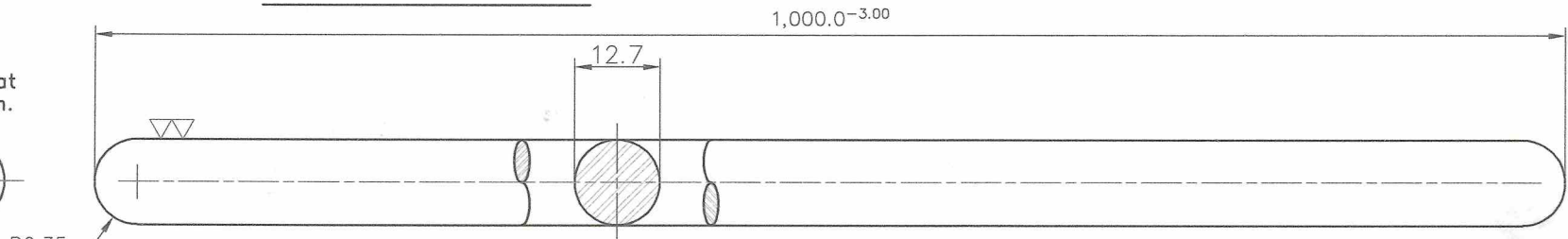
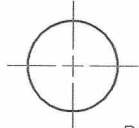
STAND ROD - 250MM

NOTE:
Max. allowable linear deflection, measured at the center, is 0.15mm.



STAND ROD - 500MM

NOTE:
Max. allowable linear deflection, measured at the center, is 0.50mm.



STAND ROD - 1000MM

NOTE:
Dimensions are in millimeters
except otherwise specified.
File sharp edges.
Surface Roughness: $\nabla 1.20$ to 1.40 *lm*

TOLERANCES FOR LENGTH GAUGING						
Grade of Accuracy	Nominal Size	0.5 to 3	Over 3 to 6	Over 6 to 30	Over 30 to 120	Over 120 to 400
Medium		± 0.10	± 0.10	± 0.20	± 0.30	± 0.50

TOLERANCES FOR RADIUS & CHAMFERS					
Grade of Accuracy	Nominal Size	0.5 to 3	Over 3 to 6	Over 6 to 30	Over 30 to 120
Smooth		± 0.20	± 0.50	± 1.00	± 2.00
Medium		± 0.20	± 0.50	± 1.00	± 2.00

SYM	REVISION	DATE	BY
③	Change chamfer to radius	1/10/97	RHN
②	Change Diameter	4/17/96	RCLR
①	Change Diameter	4/6/95	EXECOM

Date	SEPT 2021	Scale	NTS
Conceptualized by			
Drawn by	B.C. Lisondra		
Designed by	J.N. Arija		
Checked by	A.B. Ybañez		
Recommended by	R. C. La Rosa		
Approved by			

GOVERNMENT PROPERTY

STAND RODS

Item Name	STAND RODS	Sheet	
Material	STAINLESS STEEL, AISI 304/304L	File name	sndrods.dwg

DepED-BLR