


HALF-SECTION

SPHERICAL SOLID CHROME-PLATED STEEL BALL

* Dimensions are in millimeters.
 except otherwise specified.
 * Surface Roughness @ 1.00 to 1.20 μm

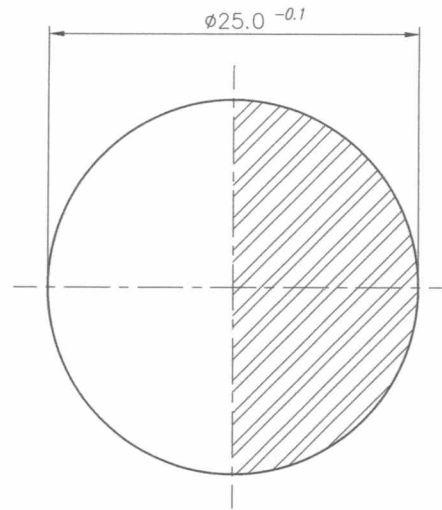
GOVERNMENT PROPERTY

Date	SEPT 2021	Scale	FREE FALL APPRATUS	
Conceptualized by			Item Name	Sheet
Drawn by	B.C. Lisondra	Checked by	Material	File name
Designed by		J.N. Arriola	STEEL, Chrome Plated	steel balls
Recommended by	A.B. Ybanez	Approved by	 DepED-BLR	
	R. C. La Rosa			

TOLERANCES FOR LENGTH GAUGING						
Grade of Accuracy	Nominal Size	0.5 to 3	Over 3 to 6	Over 6 to 30	Over 30 to 120	Over 120 to 400
Medium		± 0.10	± 0.10	± 0.20	± 0.30	± 0.50

TOLERANCES FOR RADIUS & CHAMFERS					
Grade of Accuracy	Nominal Size	0.5 to 3	Over 3 to 6	Over 6 to 30	Over 30 to 120
Smooth		± 0.20	± 0.50	± 1.00	± 2.00
Medium		± 0.20	± 0.50	± 1.00	± 2.00

SYM	REVISION	DATE	BY




HALF-SECTION

SPHERICAL SOLID CHROME-PLATED STEEL BALL

WEIGHT: 63.0 ± 0.5 grams

- * Dimensions are in millimeters.
except otherwise specified.
- * Surface Roughness @ 1.00 to 1.20 μm

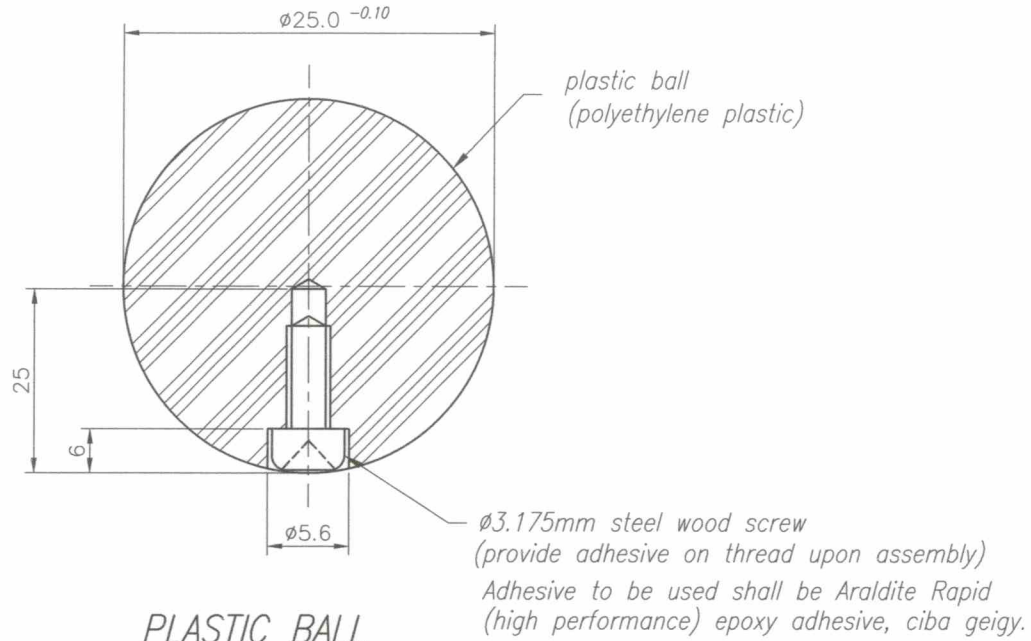
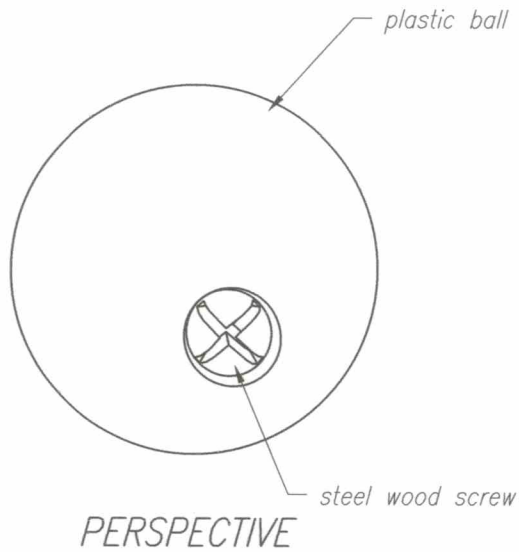
GOVERNMENT PROPERTY

Date	SEPT 2021	Scale	FREE FALL APPRATUS	
Conceptualized by			Item Name	SPHERICAL SOLID BALL
Drawn by	B.C. Lisondra	Checked by	Material	STEEL, Chrome Plated
Designed by		Recommended by	File name	steel balls
		Approved by	 DepED-BLR	

TOLERANCES FOR LENGTH GAUGING						
Grade of Accuracy	Nominal Size	0.5 to 3	Over 3 to 6	Over 6 to 30	Over 30 to 120	Over 120 to 400
Medium		± 0.10	± 0.10	± 0.20	± 0.30	± 0.50

TOLERANCES FOR RADIUS & CHAMFERS					
Grade of Accuracy	Nominal Size	0.5 to 3	Over 3 to 6	Over 6 to 30	Over 30 to 120
Smooth		± 0.20	± 0.50	± 1.00	± 2.00
Medium		± 0.20	± 0.50	± 1.00	± 2.00

SYM	REVISION	DATE	BY



PLASTIC BALL
 Material: polyethylene plastic
 Weight: with Screw = 8grams +
 Color: White

- * Dimensions are in millimeters, except otherwise specified.
- * Smoothen all sharp edges.
- * Surface Roughness @ 1.00 to 1.20 μm

GOVERNMENT PROPERTY

Date	SEPT 2021	Scale	FREE FALL APPRATUS	
Conceptualized by			Item Name	
Drawn by	B.C. Lisondra	Checked by	J.N. Arioja	SPHERICAL PLASTIC BALL
Designed by			Material	Polyethylene Thermoplastic
Recommended by	A.B. Ybanez	Approved by	R. C. La Rosa	File name plastic ball
			 DepED-BLR	

TOLERANCES FOR LENGTH GAUGING						
Grade of Accuracy	Nominal Size	0.5 to 3	Over 3 to 6	Over 6 to 30	Over 30 to 120	Over 120 to 400
Medium		± 0.10	± 0.10	± 0.20	± 0.30	± 0.50

TOLERANCES FOR RADIUS & CHAMFERS					
Grade of Accuracy	Nominal Size	0.5 to 3	Over 3 to 6	Over 6 to 30	Over 30 to 120
Smooth		± 0.20	± 0.50	± 1.00	± 2.00
Medium		± 0.20	± 0.50	± 1.00	± 2.00

SYM	REVISION	DATE	BY