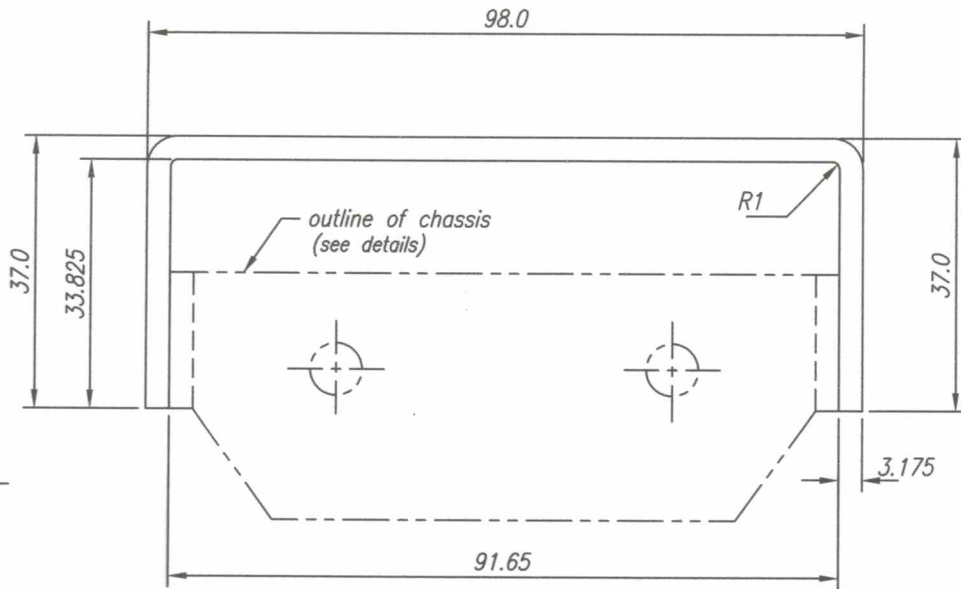
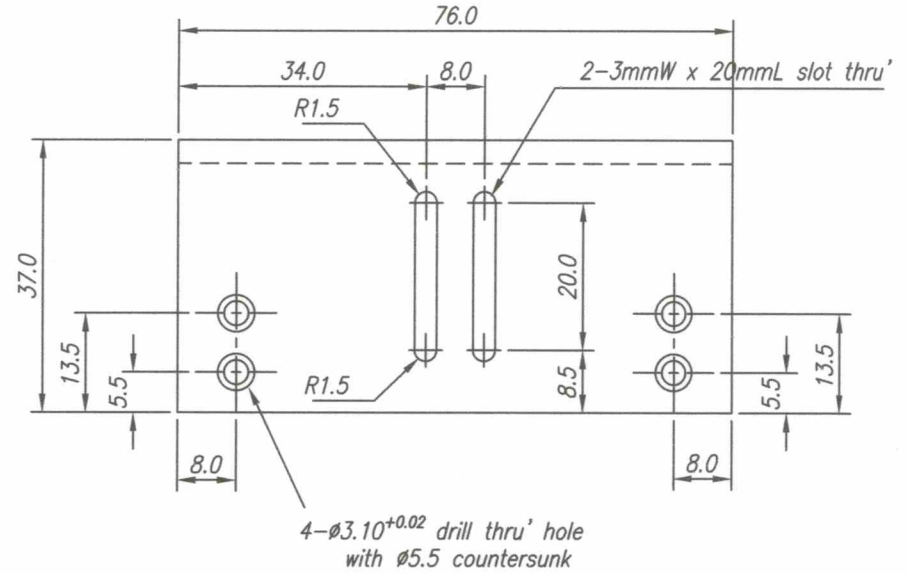


BATCH "B"



SIDE VIEW



REAR VIEW

- * Dimensions are in millimeters except otherwise specified.
- * Smoothen all sharp edges.
- * Surface Roughness @ 1.00 to 1.20 μ m

GOVERNMENT PROPERTY

TOLERANCES FOR LENGTH GAUGING						
Grade of Accuracy	Nominal Size	0.5 to 3	Over 3 to 6	Over 6 to 30	Over 30 to 120	Over 120 to 400
Medium		± 0.10	± 0.10	± 0.20	± 0.30	± 0.50

TOLERANCES FOR RADIUS & CHAMFERS					
Grade of Accuracy	Nominal Size	0.5 to 3	Over 3 to 6	Over 6 to 30	Over 30 to 120
Smooth		± 0.20	± 0.50	± 1.00	± 2.00
Medium					

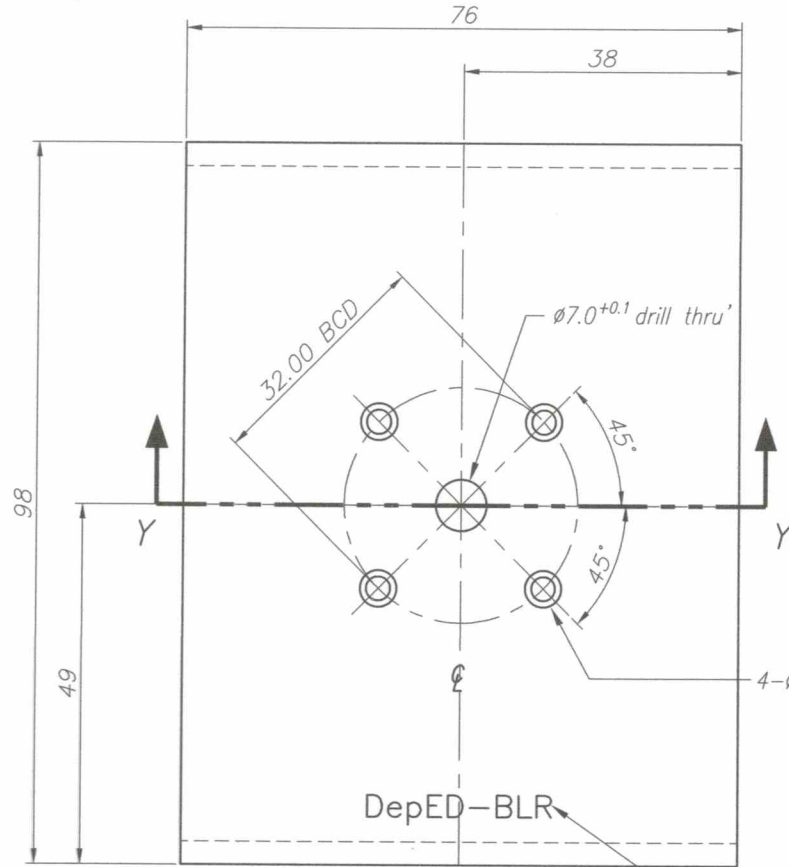
SYM	REVISION	DATE	BY

Date	SEPT 2021	Scale	NTS
Conceptualized by			
Drawn by	B.C. Lisondra	Item Name	RAIL AND CART SYSTEM
Designed by	J.C. Checked by	J.N. Arjoja	DYNAMIC CART "B" BODY (WITH COUNTERWEIGHT)
Recommended by	A.B. Ybañez	Material	3.175mm thk. Aluminum Plate, AA 6061
Approved by	R. C. La Rosa	File name	BDcart01

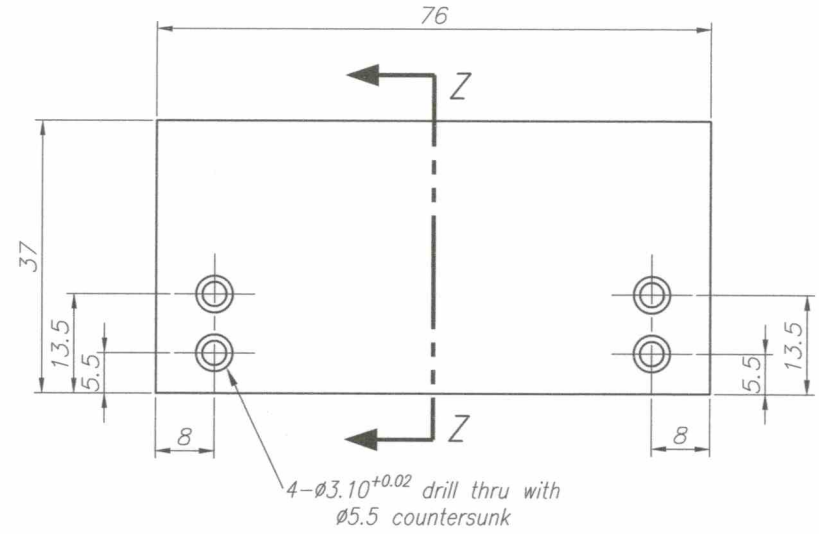


DepED-BLR

BATCH "B"



TOP VIEW



FRONT VIEW

4- $\phi 3.10^{+0.02}$ drill thru with $\phi 5.5$ countersunk spaced @ 90° apart

4- $\phi 3.10^{+0.02}$ drill thru with $\phi 5.5$ countersunk

DepED-BLR

DepED-BLR Punched Marker
Font Style: Arial
Size: 3mm

- * Dimensions are in millimeters except otherwise specified.
- * File all sharp edges.
- * Surface Roughness @ 1.00 to 1.20 μm

GOVERNMENT PROPERTY


TOLERANCES FOR LENGTH GAUGING						
Grade of Accuracy	Nominal Size	0.5 to 3	Over 3 to 6	Over 6 to 30	Over 30 to 120	Over 120 to 400
Medium		± 0.10	± 0.10	± 0.20	± 0.30	± 0.50
TOLERANCES FOR RADIUS & CHAMFERS						
Grade of Accuracy	Nominal Size	0.5 to 3	Over 3 to 6	Over 6 to 30	Over 30 to 120	
Smooth		± 0.20	± 0.50	± 1.00	± 2.00	
Medium						

SYM

REVISION

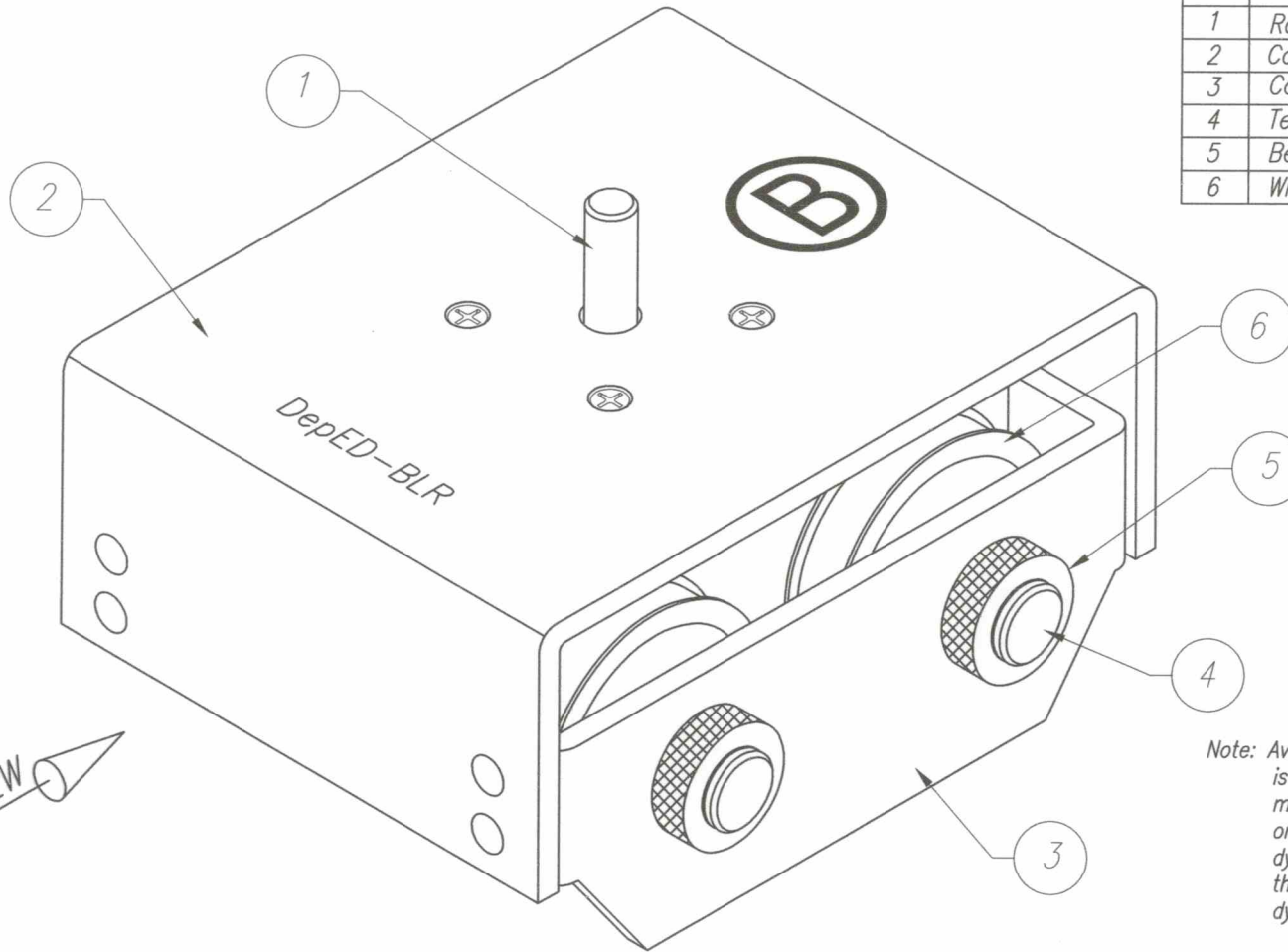
DATE

BY

Date	SEPT 2021	Scale	NTS	RAIL AND CART SYSTEM	
Conceptualized by					
Drawn by	B.C. Lisondra	Item Name	DYNAMIC CART "B" BODY (WITH COUNTERWEIGHT)		Sheet
Designed by	J.C. Checked by	Material	3.175mm thk. Aluminum Sheet, AA 6061		File name
Recommended by	A.B. Ybanez			BDcart02	
Approved by	R. C. La Rosa			 DepED-BLR	

BATCH "B"

Item	Description	Qty.
1	Rod for Masses	1 pc.
2	Cart Body	1 pc.
3	Cart Chassis	2 pcs.
4	Teflon Bearing	4 pcs.
5	Bearing Nut	4 pcs.
6	Wheel	4 pcs.



Note: Average weight of BLR prototype dynamic cart is 286grams. This will serve as reference during mass production. The final weight will be based on the actual weight of the mass-produced dynamic cart, considering all the parameters in the official specs were met. Weight tolerance per dynamic cart is ± 2.5 grams.


ISOMETRIC

GOVERNMENT PROPERTY

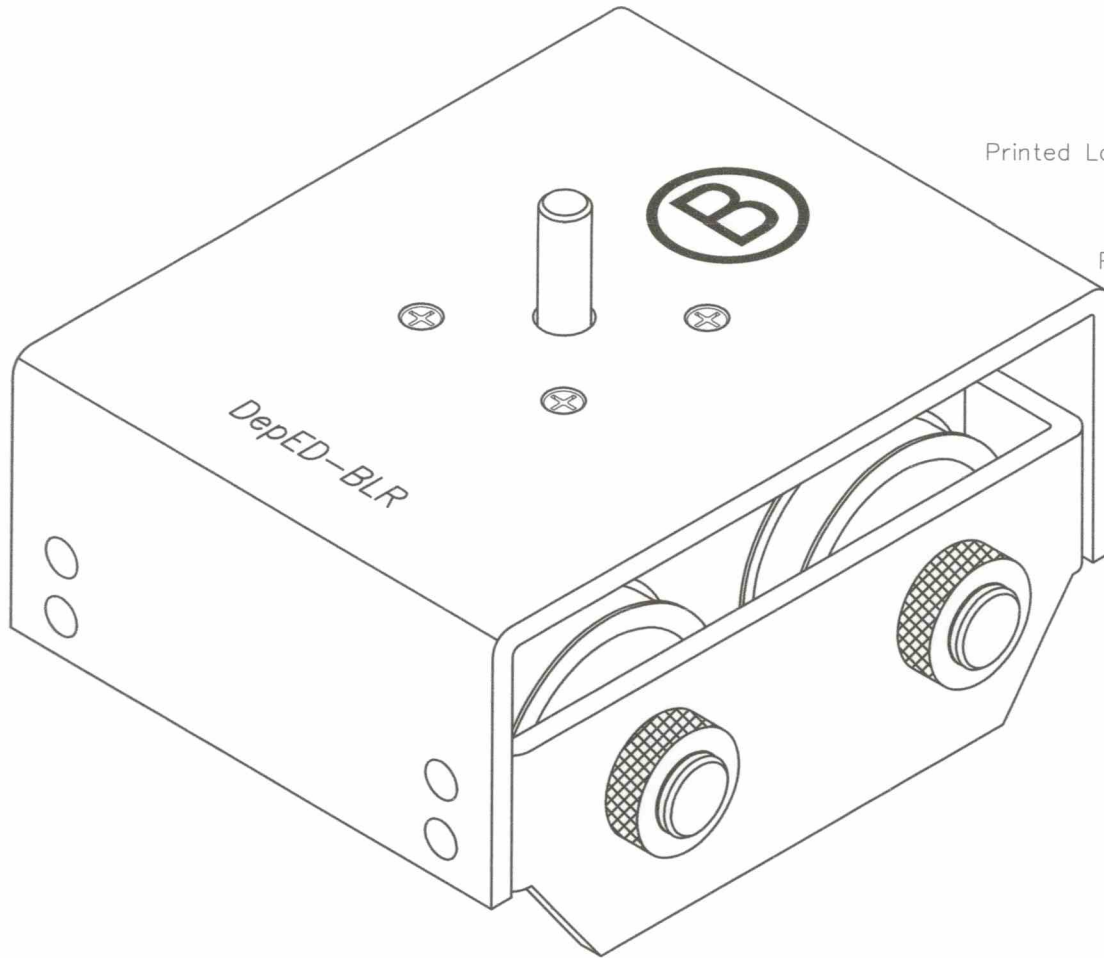
TOLERANCES FOR LENGTH GAUGING						
Grade of Accuracy	Nominal Size	0.5 to 3	Over 3 to 6	Over 6 to 30	Over 30 to 120	Over 120 to 400
Medium		± 0.10	± 0.10	± 0.20	± 0.30	± 0.50

TOLERANCES FOR RADIUS & CHAMFERS					
Grade of Accuracy	Nominal Size	0.5 to 3	Over 3 to 6	Over 6 to 30	Over 30 to 120
Smooth		± 0.20	± 0.50	± 1.00	± 2.00
Medium					

SYM	REVISION	DATE	BY

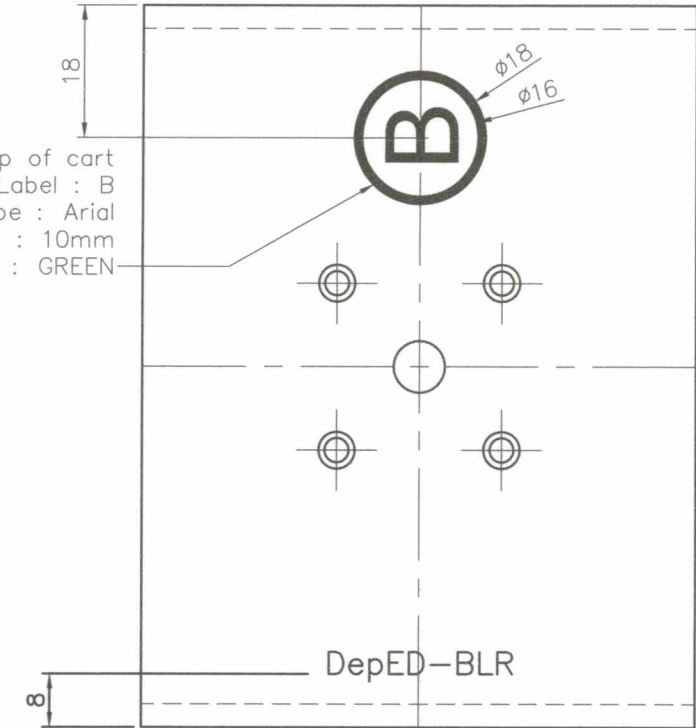
Date	SEPT 2021	Scale	NTS
Conceptualized by			
Drawn by	B.C. Lisondra	Item Name	DYNAMIC CART "B" (WITH COUNTERWEIGHT)
Designed by		Material	
		Q.C. Checked by	J.N. Arriola
		Recommended by	A.B. Ybañez
		Approved by	R. C. La Rosa
			
		<p>DepED-BLR</p>	
		Sheet	Blsocart3

BATCH "B"



ISOMETRIC

Printed Label on top of cart
 Printed Label : B
 Font Type : Arial
 Height : 10mm
 Print color : GREEN



PRINT LAYOUT

*Dimensions are in millimeters.
 *Smoothen sharp edges.

GOVERNMENT PROPERTY

TOLERANCES FOR LENGTH GAUGING

Grade of Accuracy	Nominal Size	0.5 to 3	Over 3 to 6	Over 6 to 30	Over 30 to 120	Over 120 to 400
Medium		± 0.10	± 0.10	± 0.20	± 0.30	± 0.50

TOLERANCES FOR RADIUS & CHAMFERS

Grade of Accuracy	Nominal Size	0.5 to 3	Over 3 to 6	Over 6 to 30	Over 30 to 120
Smooth		± 0.20	± 0.50	± 1.00	± 2.00
Medium					

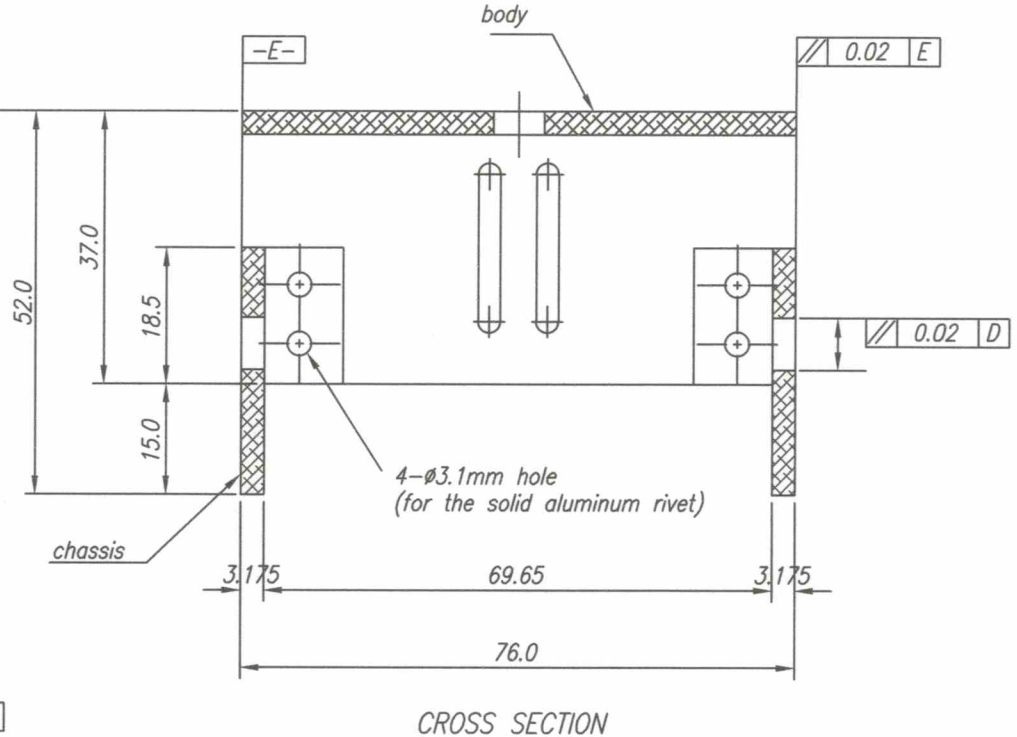
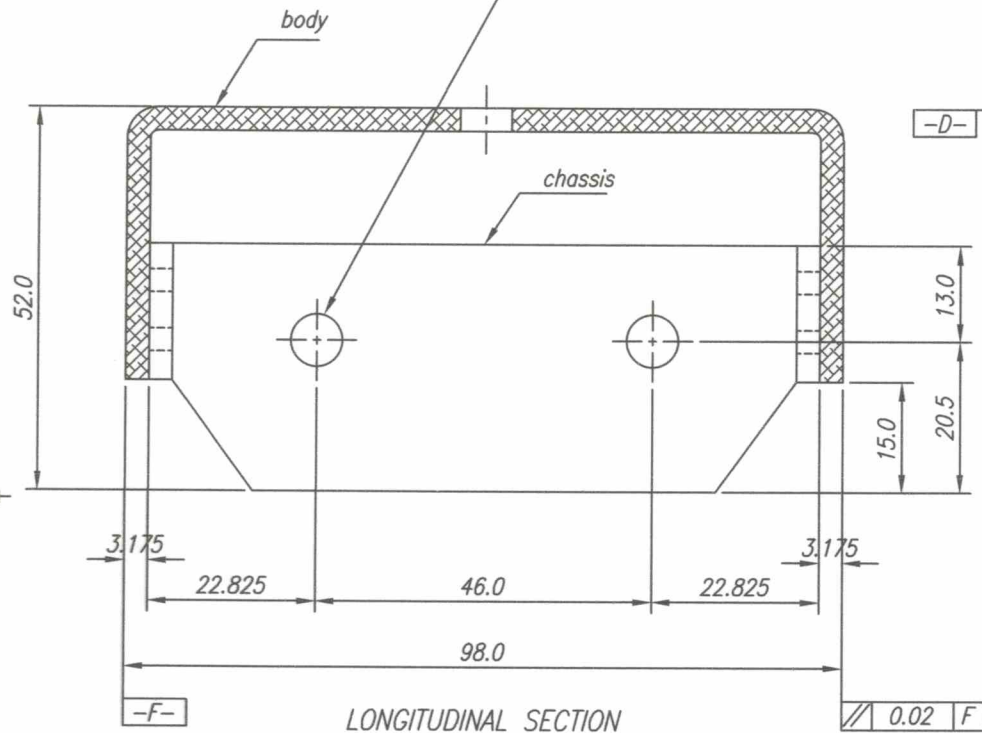
SYM	REVISION	DATE	BY

Date SEPT 2021	Scale NTS	RAIL AND CART SYSTEM	
Conceptualized by			
Drawn by B.C. Lisondra	QC. Checked by J.N. Ariola	Item Name DYNAMIC CART "B" (WITH COUNTERWEIGHT)	Sheet
Designed by	Recommended by A.B. Ybanez	Material	File name Blsocart3b
Approved by R. C. La Rosa	DepED-BLR		

BATCH "B"

- Notes: 1. The cart chassis must be fastened to the cart body using solid aluminum rivets.
(See details of the Aluminum Rivet on separate sheet.)
2. Drilling of the $\phi 7.10$ holes for the teflon bearings of the axles must be done after fastening the two (2) chassis to the cart body.

2- $\phi 7.10^{+0.02}$ drill thru' $\oplus \ominus \phi 0.05 \text{ M}$




- * Dimensions are in millimeters except otherwise specified.
- * Smoothen all sharp edges.
- * Surface Roughness @ 1.00 to 1.20 μm

GOVERNMENT PROPERTY

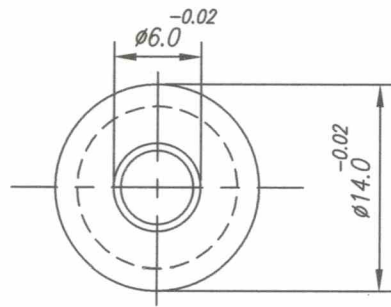
TOLERANCES FOR LENGTH GAUGING						
Grade of Accuracy	Nominal Size	0.5 to 3	Over 3 to 6	Over 6 to 30	Over 30 to 120	Over 120 to 400
Medium		± 0.10	± 0.10	± 0.20	± 0.30	± 0.50

TOLERANCES FOR RADIUS & CHAMFERS					
Grade of Accuracy	Nominal Size	0.5 to 3	Over 3 to 6	Over 6 to 30	Over 30 to 120
Smooth		± 0.20	± 0.50	± 1.00	± 2.00
Medium		± 0.20	± 0.50	± 1.00	± 2.00

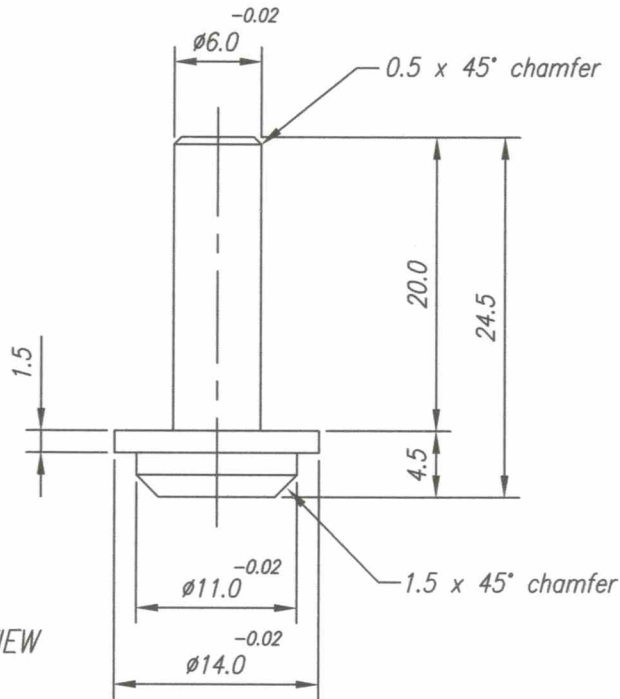
SYM	REVISION	DATE	BY

Date	SEPT 2021	Scale	NTS	RAIL AND CART SYSTEM	
Conceptualized by					
Drawn by	B.C. Lisondra			Material	3.175mm thk. Aluminum Plate, AA 6061
Designed by				Checked by	J.N. Arida
Recommended by	A.B. Ybañez			Approved by	R. C. La Rosa
				 DepED-BlR	

BATCH "B"




TOP VIEW



FRONT VIEW

- * Dimensions are in millimeters except otherwise specified.
- * File all sharp edges.
- * Surface Roughness @ 1.00 to 1.20 μ m

GOVERNMENT PROPERTY

Date	SEPT 2021	Scale	NTS		
RAIL AND CART SYSTEM					
Conceptualized by				Item Name	DYN. CART B - ROD FOR MASSES
Drawn by	B.C. Lisondra			Material	Stainless Steel, AISI 304/304L or its equivalent
Designed by	C.C. Checked by			File name	BDcart04
Recommended by	J.N. Ariona			 DepED-BLR	
Approved by	A.B. Ybanez				
	R. C. La Rosa				

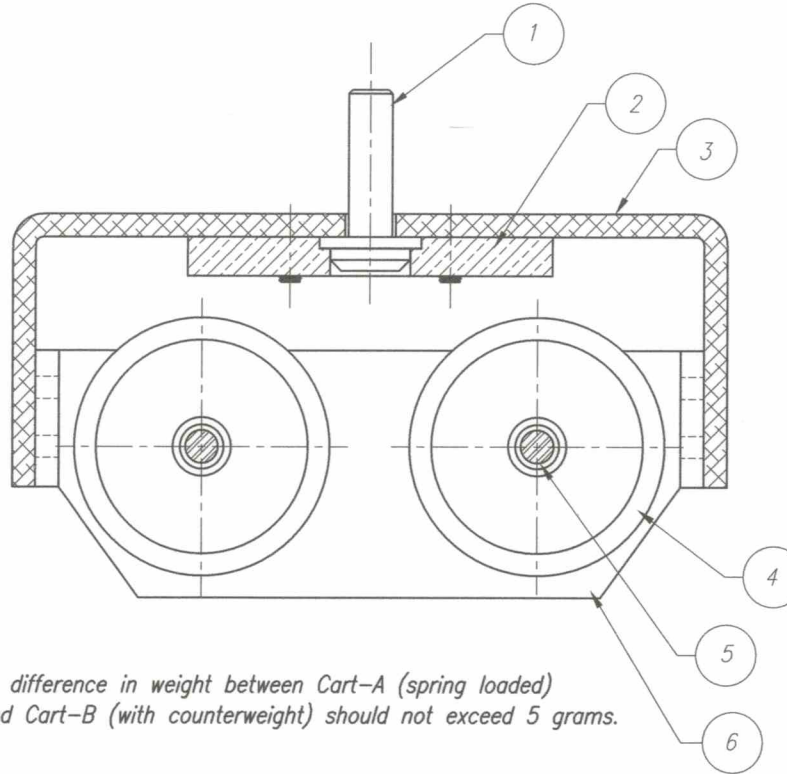
TOLERANCES FOR LENGTH GAUGING						
Grade of Accuracy	Nominal Size	0.5 to 3	Over 3 to 6	Over 6 to 30	Over 30 to 120	Over 120 to 400
Medium		± 0.10	± 0.10	± 0.20	± 0.30	± 0.50

TOLERANCES FOR RADIUS & CHAMFERS					
Grade of Accuracy	Nominal Size	0.5 to 3	Over 3 to 6	Over 6 to 30	Over 30 to 120
Smooth		± 0.20	± 0.50	± 1.00	± 2.00
Medium					

SYM	REVISION	DATE	BY

BATCH "B"

ITEM	DESCRIPTION	QTY.
1	ROD FOR MASSES	1 pc.
2	81.5-gram Counterweight	1 pc.
3	CART BODY	1 pc.
4	WHEEL	4 pcs.
5	SHAFT (AXLE)	2 pcs.
6	CHASSIS	2 pcs.



NOTE: The difference in weight between Cart-A (spring loaded) and Cart-B (with counterweight) should not exceed 5 grams.

DYNAMIC CART "B" ASSEMBLY DRAWING
(WITH COUNTERWEIGHT)

GOVERNMENT PROPERTY

TOLERANCES FOR LENGTH GAUGING						
Grade of Accuracy	Nominal Size	Over 0.5 to 3	Over 3 to 6	Over 6 to 30	Over 30 to 120	Over 120 to 400
Medium		± 0.10	± 0.10	± 0.20	± 0.30	± 0.50

TOLERANCES FOR RADIUS & CHAMFERS					
Grade of Accuracy	Nominal Size	Over 0.5 to 3	Over 3 to 6	Over 6 to 30	Over 30 to 120
Smooth		± 0.20	± 0.50	± 1.00	± 2.00
Medium					

SYM	REVISION	DATE	BY

Date	SEPT 2021	Scale	NTS	RAIL AND CART SYSTEM	
Conceptualized by					
Drawn by	B.C. Lisondra	Checked by	J.N. Arioja	DYNAMIC CART "B" ASSEMBLY(WITH COUNTERWEIGHT)	
Designed by		Recommended by	A.B. Ybañez	Material	File name
		Approved by	R. C. La Rosa		BDcart05



DepED-BLR