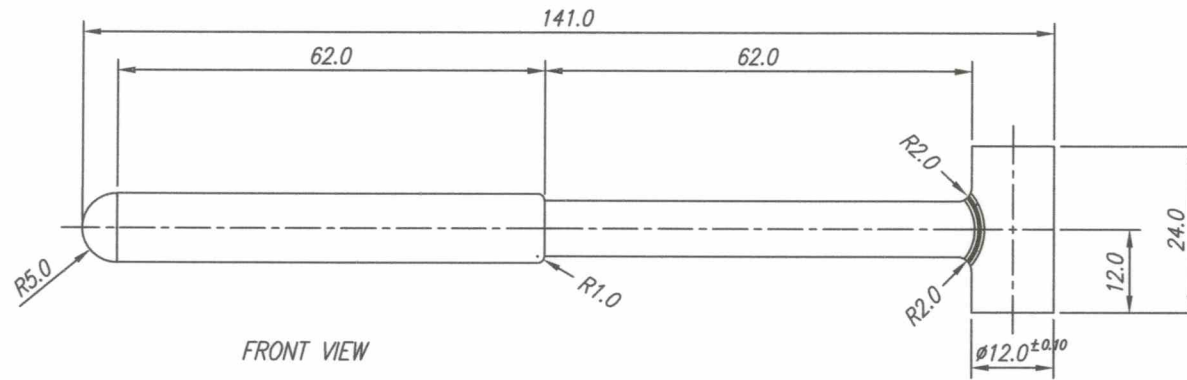
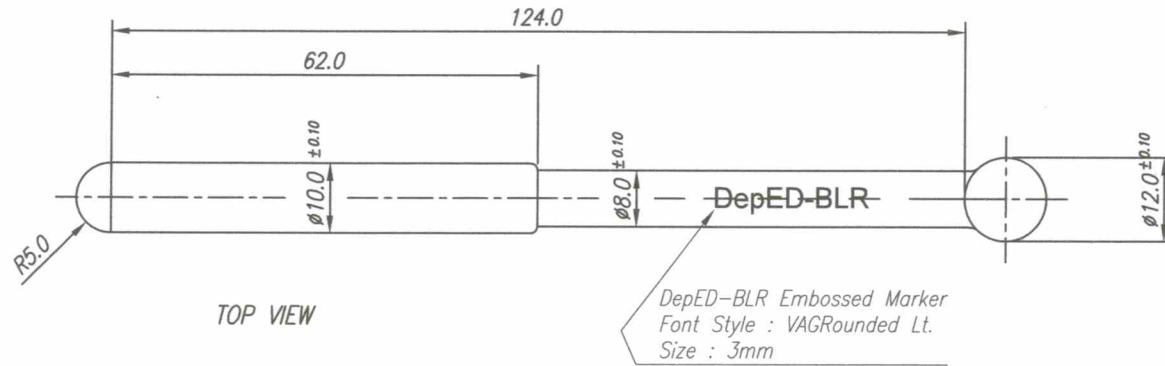



BATCH "B"



- * Dimensions are in millimeters except otherwise specified.
- * Smoothen all sharp edges.
- * Surface Roughness @ 1.00 to 1.20 μm

GOVERNMENT PROPERTY

Date	SEPT 2021	Scale	NTS	RAIL AND CART SYSTEM	
Conceptualized by					
Drawn by	B.C. Lisondra			Material	File name
Designed by	Q.C. Checked by			ABS Thermoplastic, color Green	ADcart015
Recommended by	J.N. Arioja			 DepED-BLR	
Approved by	A.B. Ybanez				
	R. C. La Rosa				

TOLERANCES FOR LENGTH GAUGING						
Grade of Accuracy	Nominal Size	0.5 to 3	Over 3 to 6	Over 6 to 30	Over 30 to 120	Over 120 to 400
Medium		± 0.10	± 0.10	± 0.20	± 0.30	± 0.50

TOLERANCES FOR RADIUS & CHAMFERS					
Grade of Accuracy	Nominal Size	0.5 to 3	Over 3 to 6	Over 6 to 30	Over 30 to 120
Smooth		± 0.20	± 0.50	± 1.00	± 2.00
Medium					

SYM	REVISION	DATE	BY