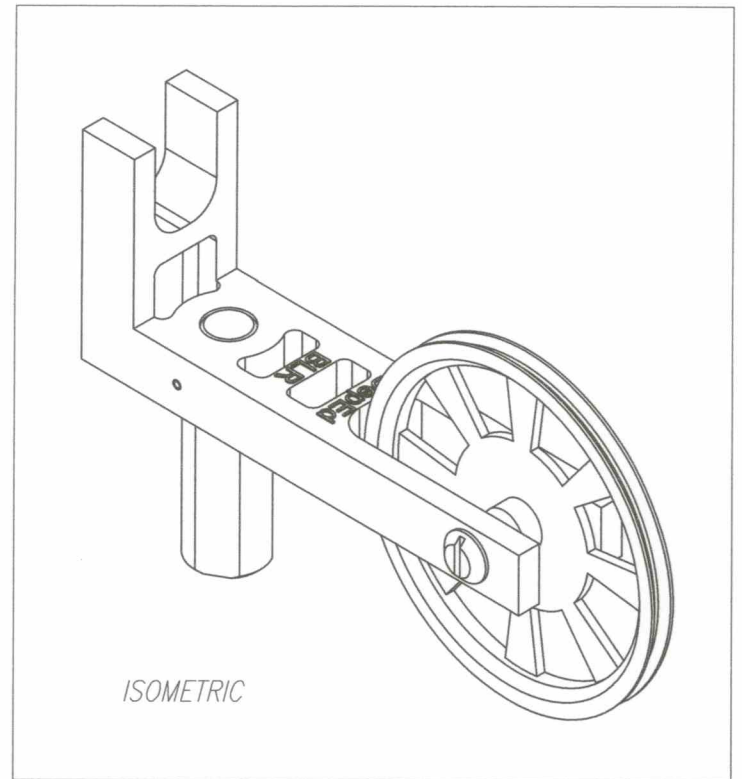


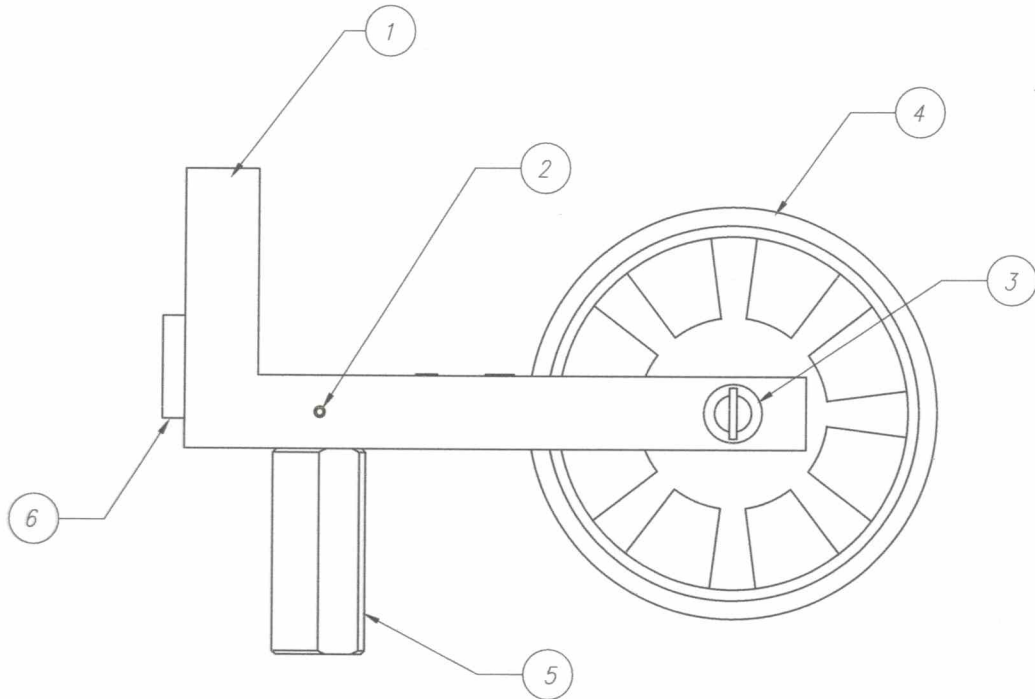
BATCH-"B"

Item	Description	Qty.
1	Fork	1 pc.
2	Pin	1 pc.
3	Bushing	2 pcs.
4	Wheel	1 pc.
5	Handle	1 pc.
6	Rubber Shock Absorber	1 pc.



ISOMETRIC

\*Smoothen sharp edges.



ASSEMBLY DETAILS

Note: Wobble tolerance of the wheel upon operation is 0.5mm (maximum) from the center.

GOVERNMENT PROPERTY

Date	SEPT 2021	Scale	NTS	<b>RAIL AND CART SYSTEM</b>	
Conceptualized by					
Drawn by	B.C. Lisondra			STOPPER-ASSEMBLY DETAILS	1/10
Designed by	Q.C. Checked by			Material	File name
	J.N. Arida				StopAs01
Recommended by	A.B. Ybanez			<b>DepED-BLR</b>	
Approved by	R. C. La Rosa				



TOLERANCES FOR LENGTH GAUGING						
Grade of Accuracy	Nominal Size	0.5 to 3	Over 3 to 6	Over 6 to 30	Over 30 to 120	Over 120 to 400
Medium		± 0.10	± 0.10	± 0.20	± 0.30	± 0.50

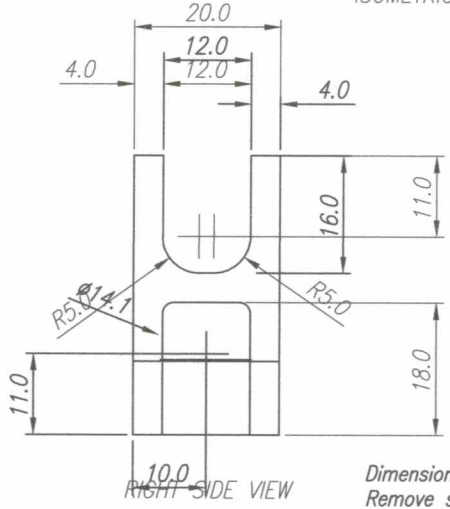
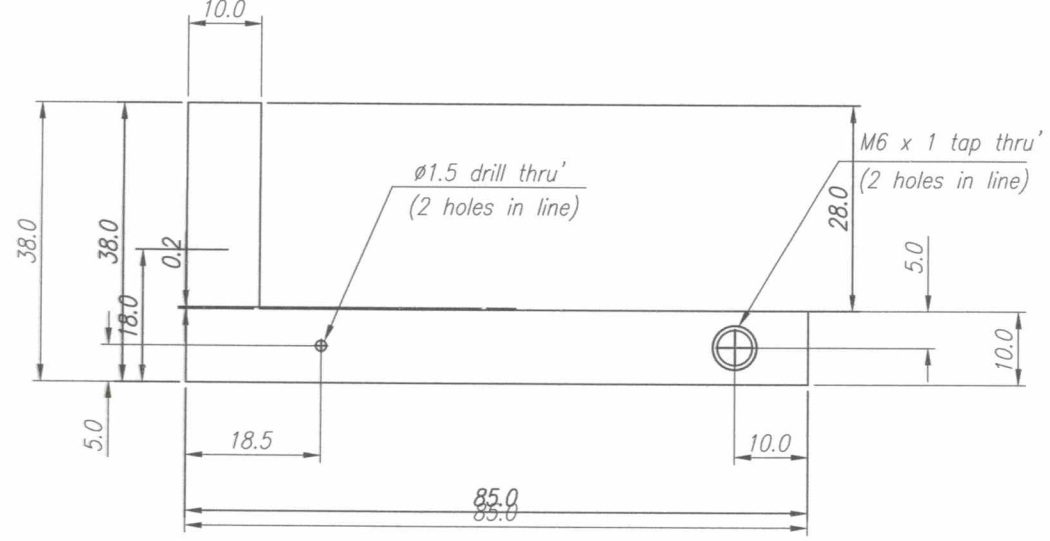
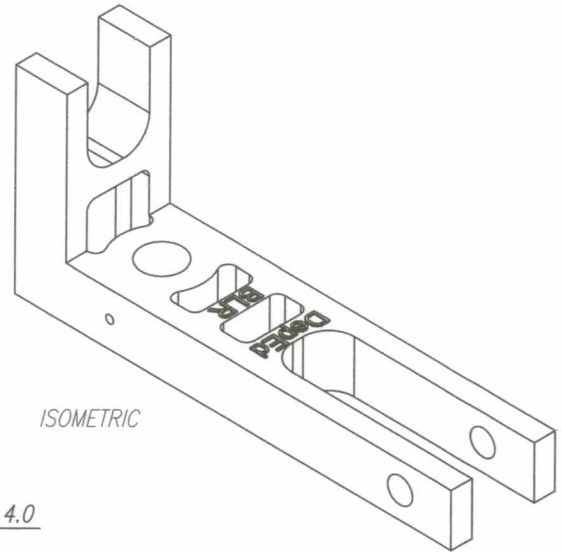
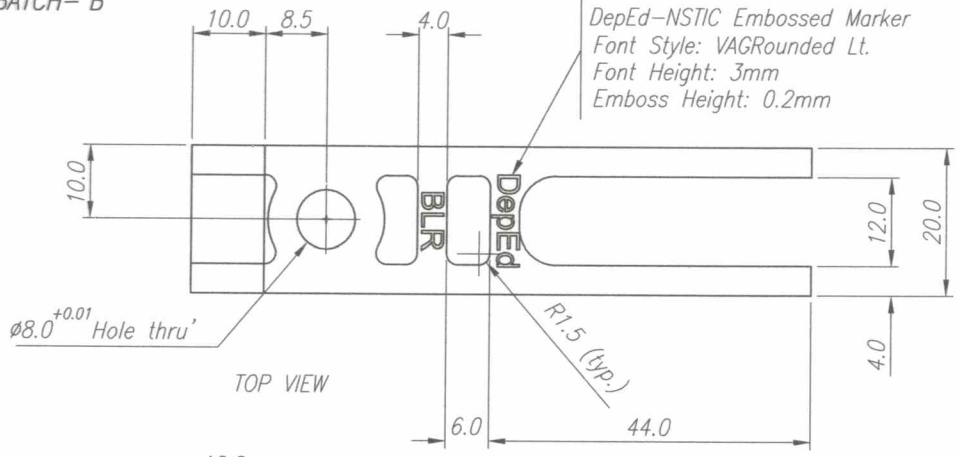
  

TOLERANCES FOR RADIUS & CHAMFERS					
Grade of Accuracy	Nominal Size	0.5 to 3	Over 3 to 6	Over 6 to 30	Over 30 to 120
Smooth		± 0.20	± 0.50	± 1.00	± 2.00

SYM	REVISION	DATE	BY

BATCH - "B"

DepEd-NSTIC Embossed Marker  
 Font Style: VAGRounded Lt.  
 Font Height: 3mm  
 Emboss Height: 0.2mm



Dimensions are in millimeters except otherwise specified.  
 Remove sharp edges.  
 Surface Roughness: 0.70 to 0.80  $\mu m$  (inner)  
 1.00 to 1.20  $\mu m$  (outer)

GOVERNMENT PROPERTY

Date	SEPT 2021	Scale	NTS	
Conceptualized by				
Drawn by	B.C. Lisondra		Item Name	STOPPER-FORK
Designed by	O.C. Checked by		Material	ABS Thermoplastic, color Green
Recommended by	A.B. Ybañez		Sheet	2/10
Approved by	R. C. La Rosa		File name	StopAs01

TOLERANCES FOR LENGTH GAUGING						
Grade of Accuracy	Nominal Size	0.5 to 3	Over 3 to 6	Over 6 to 30	Over 30 to 120	Over 120 to 400
Medium		$\pm 0.10$	$\pm 0.10$	$\pm 0.20$	$\pm 0.30$	$\pm 0.50$

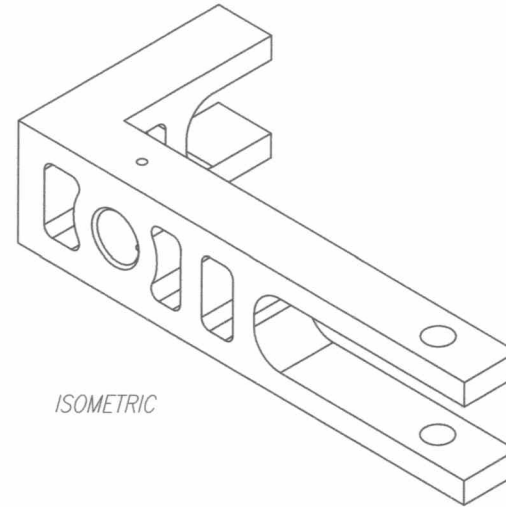
TOLERANCES FOR RADIUS & CHAMFERS					
Grade of Accuracy	Nominal Size	0.5 to 3	Over 3 to 6	Over 6 to 30	Over 30 to 120
Smooth		$\pm 0.20$	$\pm 0.50$	$\pm 1.00$	$\pm 2.00$
Medium					

SYM	REVISION	DATE	BY

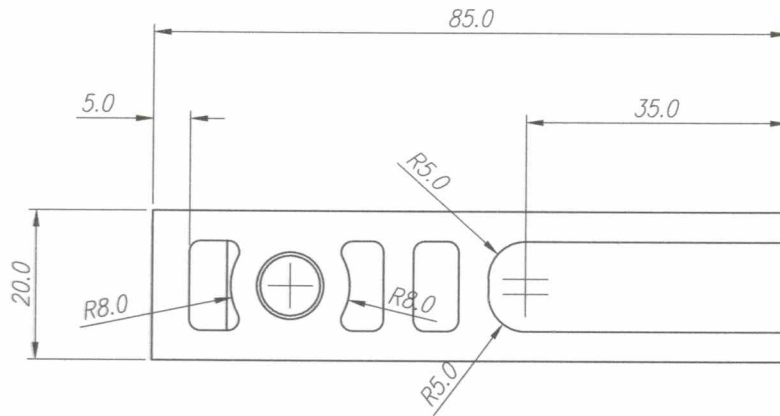


DepED-BLR

BATCH-"B"



ISOMETRIC



BOTTOM VIEW

Dimensions are in millimeters except otherwise specified.  
 Remove sharp edges.  
 Surface Roughness: 0.70 to 0.80  $\mu\text{m}$  (inner)  
 1.00 to 1.20  $\mu\text{m}$  (outer)


GOVERNMENT PROPERTY

TOLERANCES FOR LENGTH GAUGING						
Grade of Accuracy	Nominal Size	0.5 to 3	Over 3 to 6	Over 6 to 30	Over 30 to 120	Over 120 to 400
Medium		$\pm 0.10$	$\pm 0.10$	$\pm 0.20$	$\pm 0.30$	$\pm 0.50$

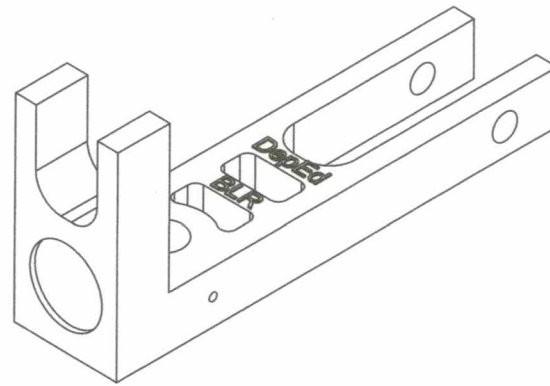
  

TOLERANCES FOR RADIUS & CHAMFERS					
Grade of Accuracy	Nominal Size	0.5 to 3	Over 3 to 6	Over 6 to 30	Over 30 to 120
Smooth		$\pm 0.20$	$\pm 0.50$	$\pm 1.00$	$\pm 2.00$
Medium					

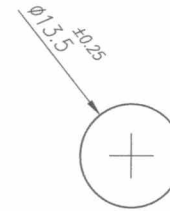
SYM	REVISION	DATE	BY

Date	SEPT 2021	Scale	NTS	RAIL AND CART SYSTEM	
Conceptualized by					
Drawn by	B.C. Lisondra			Item Name	STOPPER-FORK
Designed by				Material	ABS Thermoplastic, color Green
Q.C. Checked by	J.N. Ariola			Sheet	3/10
Recommended by	A.B. Ybañez			File name	StopAs01
Approved by	R. C. La Rosa			 <b>DepED-BLR</b>	

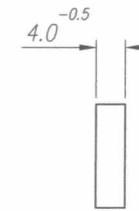
BATCH-"B"



ISOMETRIC



FRONT VIEW

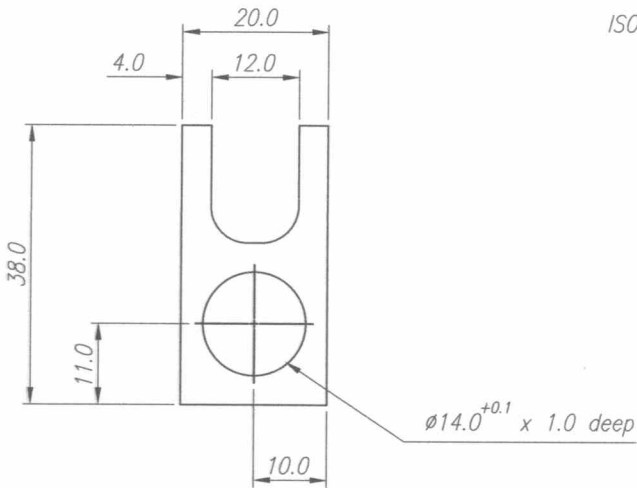


SIDE VIEW



ISOMETRIC

RUBBER SHOCK ABSORBER  
HARDNESS: 43±5 DUROMETER, TYPE A



LEFT SIDE VIEW

Dimensions are in millimeters except otherwise specified.  
Remove sharp edges.  
Surface Roughness: 0.70 to 0.80  $\mu\text{m}$  (inner)  
1.00 to 1.20  $\mu\text{m}$  (outer)


GOVERNMENT PROPERTY

TOLERANCES FOR LENGTH GAUGING						
Grade of Accuracy	Nominal Size	0.5 to 3	Over 3 to 6	Over 6 to 30	Over 30 to 120	Over 120 to 400
Medium		± 0.10	± 0.10	± 0.20	± 0.30	± 0.50

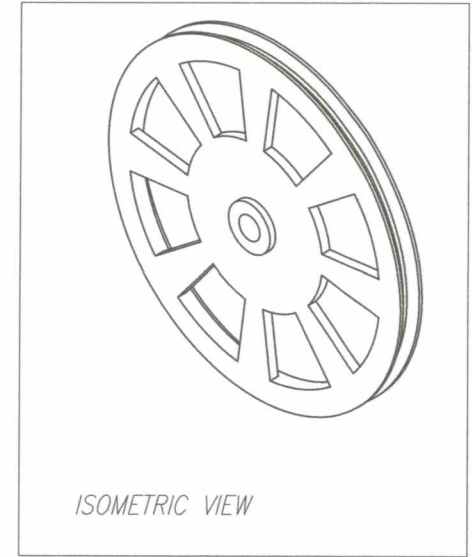
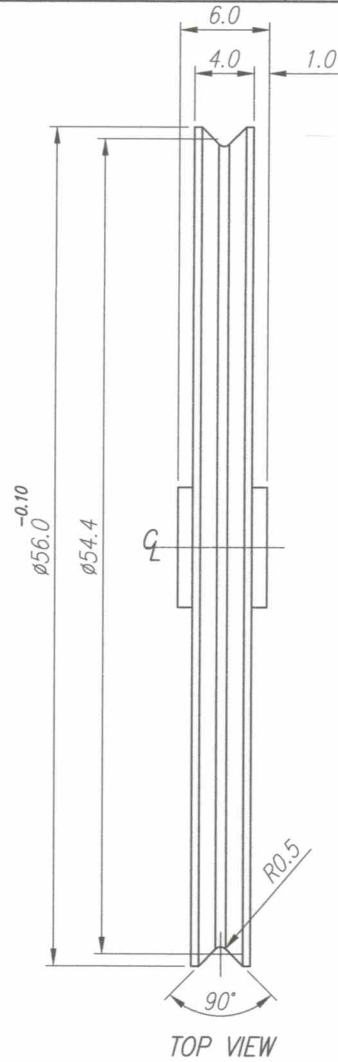
  

TOLERANCES FOR RADIUS & CHAMFERS					
Grade of Accuracy	Nominal Size	0.5 to 3	Over 3 to 6	Over 6 to 30	Over 30 to 120
Smooth		± 0.20	± 0.50	± 1.00	± 2.00
Medium		± 0.20	± 0.50	± 1.00	± 2.00

SYM REVISION DATE BY

Date	SEPT 2021	Scale	NTS	RAIL AND CART SYSTEM	
Conceptualized by					
Drawn by	B.C. Lisondra	Item Name	STOPPER-FORK	Sheet	4/10
Designed by		Material	ABS Thermoplastic, color Green	File name	StopAs01
Recommended by	A.B. Ybanez	 <b>DepED-BLR</b>			
Approved by	R. C. La Rosa				

BATCH-"B"



Dimensions are in millimeters except otherwise specified.  
 Remove sharp edges.  
 Surface Roughness: 0.70 to 0.80  $\mu m$  (inner)  
 1.00 to 1.20  $\mu m$  (outer)

GOVERNMENT PROPERTY


TOLERANCES FOR LENGTH GAUGING						
Grade of Accuracy	Nominal Size	0.5 to 3	Over 3 to 6	Over 6 to 30	Over 30 to 120	Over 120 to 400
Medium		$\pm 0.10$	$\pm 0.10$	$\pm 0.20$	$\pm 0.30$	$\pm 0.50$

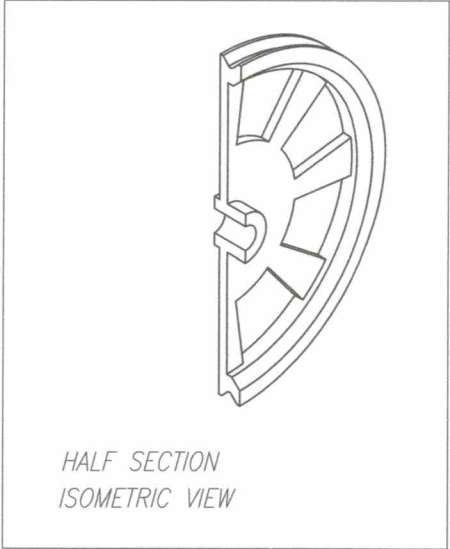
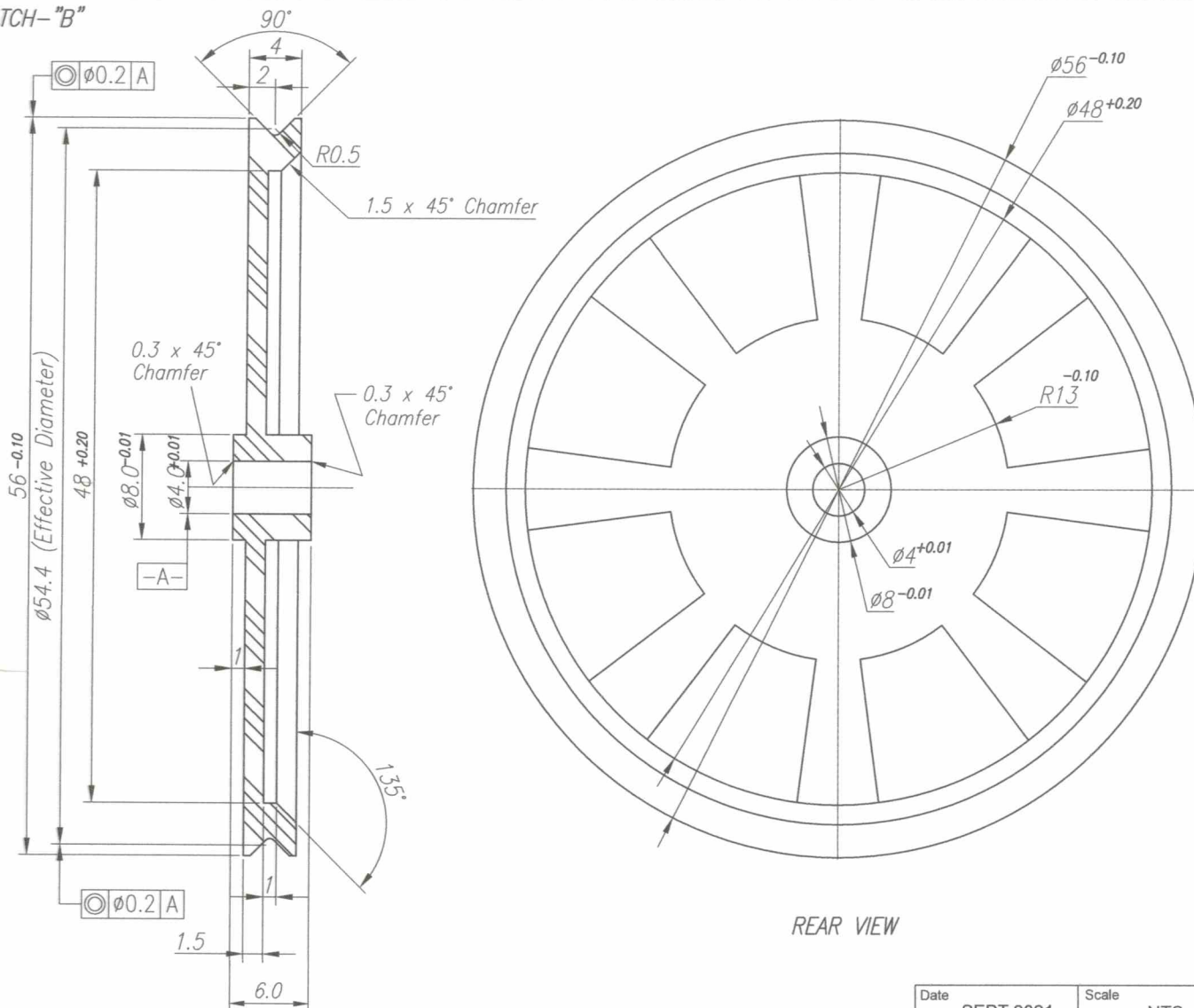
TOLERANCES FOR RADIUS & CHAMFERS						
Grade of Accuracy	Nominal Size	0.5 to 3	Over 3 to 6	Over 6 to 30	Over 30 to 120	
Smooth		$\pm 0.20$	$\pm 0.50$	$\pm 1.00$	$\pm 2.00$	
Medium						

SYM	REVISION	DATE	BY

Date	SEPT 2021	Scale	NTS
Conceptualized by			
Drawn by	B.C. Lisondra		
Designed by		Q.C. Checked by	J.M. Ariza
Recommended by	A.B. Ybanez		
Approved by	R. C. La Rosa		

<b>RAIL AND CART SYSTEM</b>	
Item Name	STOPPER-WHEEL
Material	ABS Thermoplastic, color Red
Sheet	5/10
File name	StopAs01
 <b>DepED-BLR</b>	

BATCH-"B"



HALF SECTION ISOMETRIC VIEW

Notes: a) Remove all flushes.  
 b) Concentricity tolerance of the outside diameter and the effective diameter to the inside (bore) diameter is  $\phi 0.2\text{mm}$ .

Dimensions are in millimeters except otherwise specified.  
 Remove sharp edges.  
 Surface Roughness: 0.70 to 0.80  $\mu\text{m}$  (inner)  
 1.00 to 1.20  $\mu\text{m}$  (outer)

SECTION H-H

REAR VIEW

GOVERNMENT PROPERTY

TOLERANCES FOR LENGTH GAUGING						
Grade of Accuracy	Nominal Size	0.5 to 3	Over 3 to 6	Over 6 to 30	Over 30 to 120	Over 120 to 400
Medium		$\pm 0.10$	$\pm 0.10$	$\pm 0.20$	$\pm 0.30$	$\pm 0.50$


  

TOLERANCES FOR RADIUS & CHAMFERS					
Grade of Accuracy	Nominal Size	0.5 to 3	Over 3 to 6	Over 6 to 30	Over 30 to 120
Smooth		$\pm 0.20$	$\pm 0.50$	$\pm 1.00$	$\pm 2.00$
Medium		$\pm 0.20$	$\pm 0.50$	$\pm 1.00$	$\pm 2.00$

SYM	REVISION	DATE	BY

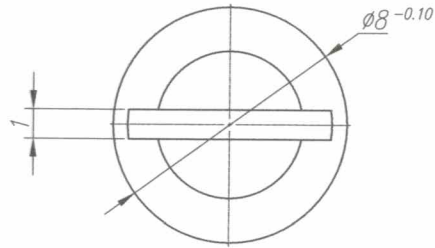
Date	SEPT 2021	Scale	NTS
Conceptualized by			
Drawn by	B.C. Lisondra	Item Name	STOPPER-WHEEL
Designed by		Material	ABS Thermoplastic, color Red
Q.C. Checked by	J.N. Aricja	Sheet	6/10
Recommended by	A.B. Ybanez	File name	StopAs01
Approved by	R. C. La Rosa		

**RAIL AND CART SYSTEM**

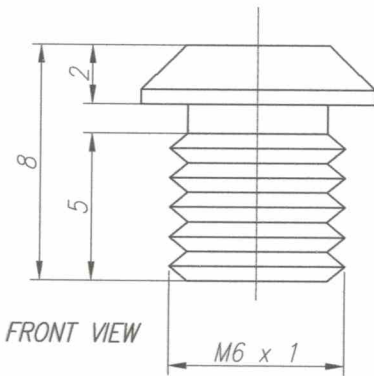


**DepED-BLR**

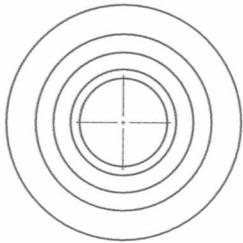
BATCH - "B"



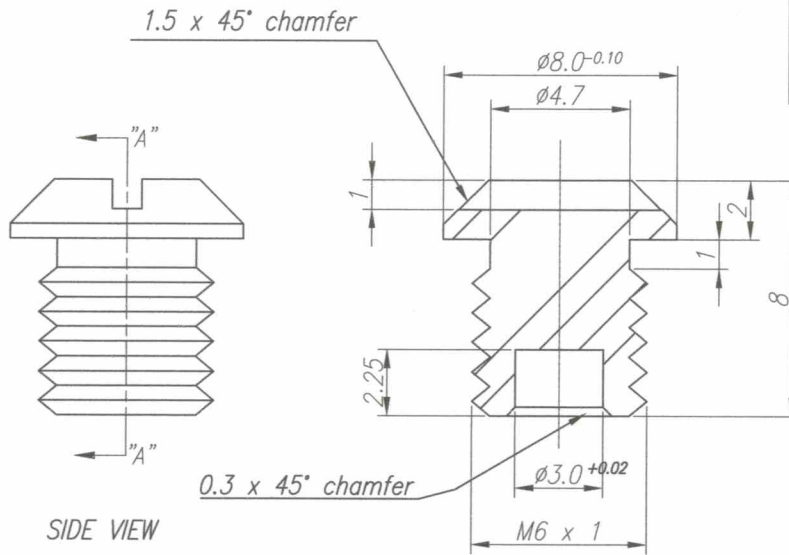
TOP VIEW



FRONT VIEW

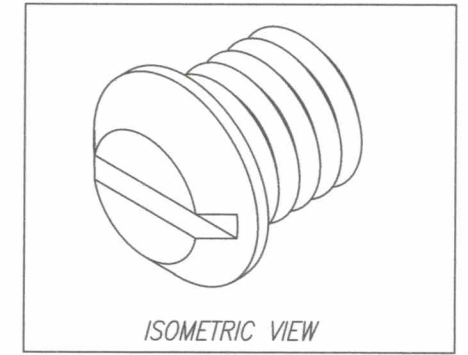


BOTTOM VIEW



SIDE VIEW

SECTION "A"-"A"




ISOMETRIC VIEW

Dimensions are in millimeters except otherwise specified.  
Remove sharp edges.  
Surface Roughness: 0.70 to 0.80  $\mu\text{m}$  (inner)  
1.00 to 1.20  $\mu\text{m}$  (outer)

GOVERNMENT PROPERTY

TOLERANCES FOR LENGTH GAUGING						
Grade of Accuracy	Nominal Size	0.5 to 3	Over 3 to 6	Over 6 to 30	Over 30 to 120	Over 120 to 400
Medium		$\pm 0.10$	$\pm 0.10$	$\pm 0.20$	$\pm 0.30$	$\pm 0.50$
TOLERANCES FOR RADIUS & CHAMFERS						
Grade of Accuracy	Nominal Size	0.5 to 3	Over 3 to 6	Over 6 to 30	Over 30 to 120	
Smooth		$\pm 0.20$	$\pm 0.50$	$\pm 1.00$	$\pm 2.00$	
Medium		$\pm 0.20$	$\pm 0.50$	$\pm 1.00$	$\pm 2.00$	

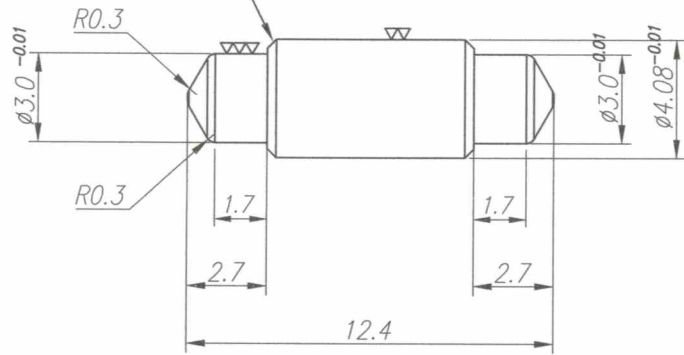
SYM	REVISION	DATE	BY

Date	SEPT 2021	Scale	NTS	RAIL AND CART SYSTEM	
Conceptualized by					
Drawn by	B.C. Lisondra	Item Name	STOPPER - BUSHING	Sheet	7/10
Designed by		Material	Teflon	File name	StopAs01
Recommended by	A.B. Ybanez				
Approved by	R. C. La Rosa				

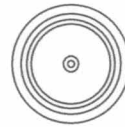
DepED-BLR

BATCH-"B"

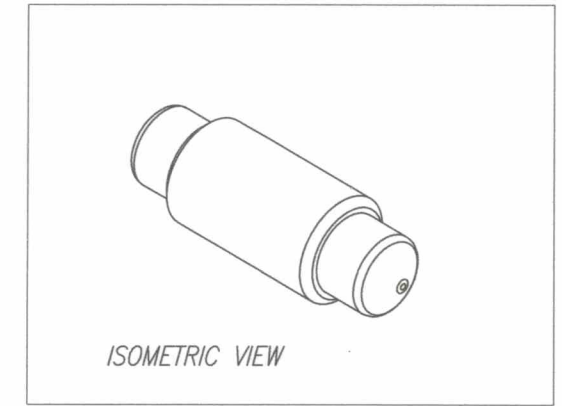
0.3 x 45° chamfer



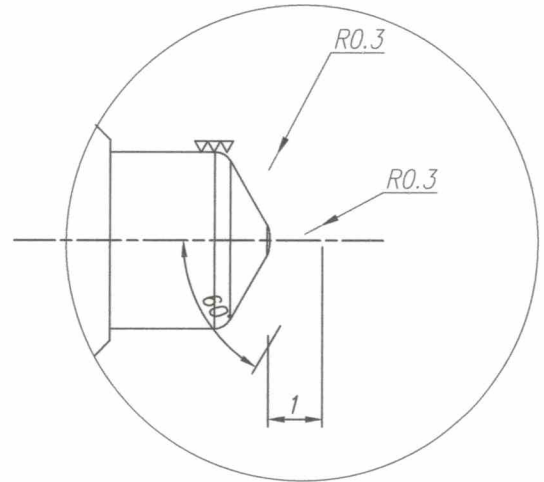
FRONT VIEW



SIDE VIEW



ISOMETRIC VIEW



ENLARGED PIN END DETAILS  
scale 8:1mm

Dimensions are in millimeters except otherwise specified.  
Smoothen sharp edges.  
Surface Roughness:  $\nabla\nabla\nabla$  - 0.60 to 0.80  $\mu\text{m}$  (inner)  
 $\nabla\nabla$  - 1.00 to 1.20  $\mu\text{m}$  (outer)


GOVERNMENT PROPERTY

TOLERANCES FOR LENGTH GAUGING						
Grade of Accuracy	Nominal Size	Over 0.5 to 3	Over 3 to 6	Over 6 to 30	Over 30 to 120	Over 120 to 400
Medium		$\pm 0.10$	$\pm 0.10$	$\pm 0.20$	$\pm 0.30$	$\pm 0.50$

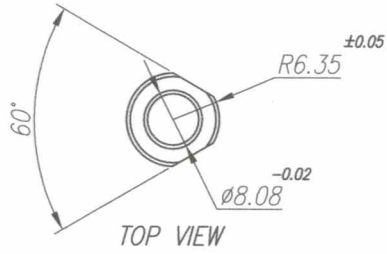
TOLERANCES FOR RADIUS & CHAMFERS					
Grade of Accuracy	Nominal Size	Over 0.5 to 3	Over 3 to 6	Over 6 to 30	Over 30 to 120
Smooth		$\pm 0.20$	$\pm 0.50$	$\pm 1.00$	$\pm 2.00$
Medium					

SYM	REVISION	DATE	BY

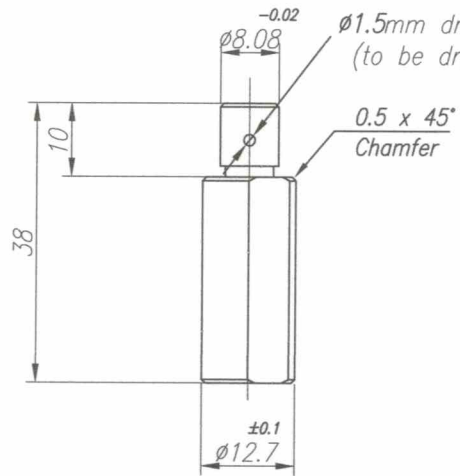
Date	SEPT 2021	Scale	NTS	<b>RAIL AND CART SYSTEM</b>	
Conceptualized by					
Drawn by	B.C. Lisondra			Item Name	STOPPER - WHEEL PIVOT PIN
Designed by				Material	Stainless Steel, AISI 304/304L or its equivalent
Checked by	J.N. Ariola			Sheet	8/10
Recommended by	A.B. Ybañez			File name	StopAs01
Approved by	R. C. La Rosa			 <b>DepED-BLR</b>	



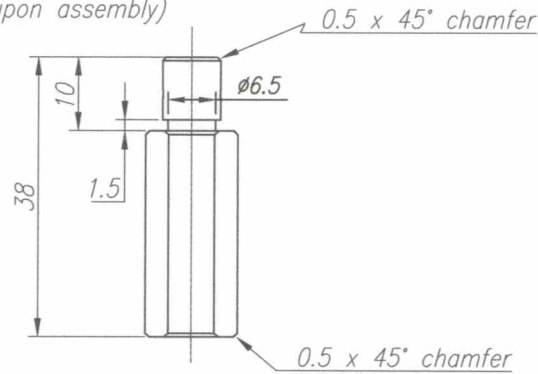
BATCH-"B"



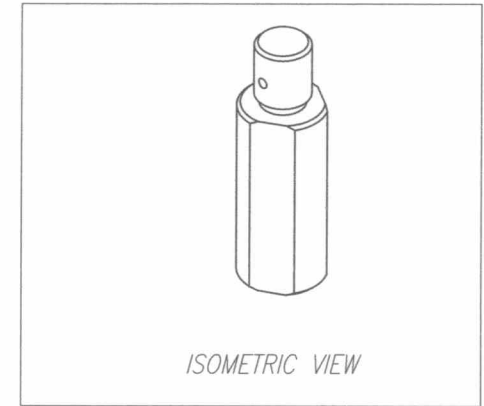
TOP VIEW



FRONT VIEW



SIDE VIEW




ISOMETRIC VIEW

Dimensions are in millimeters except otherwise specified.  
Remove sharp edges.  
Surface Roughness: 0.70 to 0.80  $\mu\text{m}$  (inner)  
1.00 to 1.20  $\mu\text{m}$  (outer)

GOVERNMENT PROPERTY

TOLERANCES FOR LENGTH GAUGING					
Grade of Accuracy	Nominal Size	Over 0.5 to 3	Over 3 to 6	Over 6 to 30	Over 30 to 120
Medium		$\pm 0.10$	$\pm 0.10$	$\pm 0.20$	$\pm 0.30$
TOLERANCES FOR RADIUS & CHAMFERS					
Grade of Accuracy	Nominal Size	Over 0.5 to 3	Over 3 to 6	Over 6 to 30	Over 30 to 120
Smooth		$\pm 0.20$	$\pm 0.50$	$\pm 1.00$	$\pm 2.00$
Medium		$\pm 0.20$	$\pm 0.50$	$\pm 1.00$	$\pm 2.00$

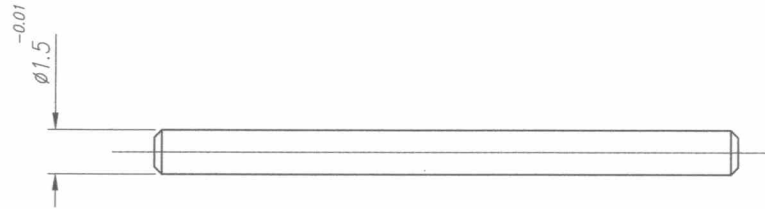
SYM	REVISION	DATE	BY

Date	SEPT 2021	Scale	NTS	RAIL AND CART SYSTEM	
Conceptualized by					
Drawn by	B.C. Lisondra	Item Name	STOPPER-HANDLE	Sheet	9/10
Designed by		Material	Stainless Steel, AISI 304/304L or its equivalent	File name	StopAs01
Recommended by	A.B. Ybañez			DepED-BLR	
Approved by	R. C. La Rosa				

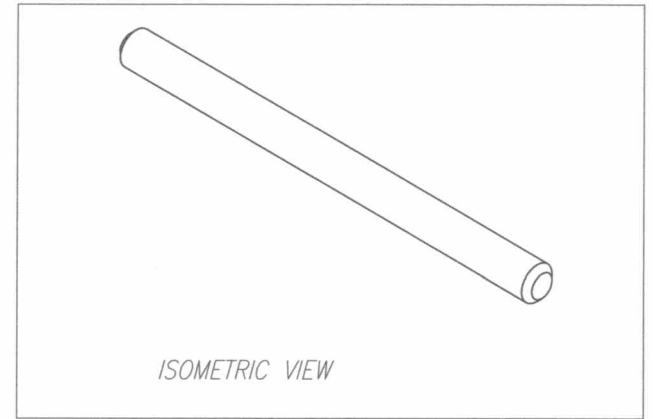
BATCH-"B"



FRONT VIEW



SIDE VIEW



ISOMETRIC VIEW

\*Dimensions are in millimeters except otherwise specified.  
 \*Smoothen sharp edges.  
 \*Surface Roughness: 1.00 to 1.20  $\mu m$


GOVERNMENT PROPERTY

TOLERANCES FOR LENGTH GAUGING						
Grade of Accuracy	Nominal Size	0.5 to 3	Over 3 to 6	Over 6 to 30	Over 30 to 120	Over 120 to 400
Medium		$\pm 0.10$	$\pm 0.10$	$\pm 0.20$	$\pm 0.30$	$\pm 0.50$

TOLERANCES FOR RADIUS & CHAMFERS						
Grade of Accuracy	Nominal Size	0.5 to 3	Over 3 to 6	Over 6 to 30	Over 30 to 120	
Smooth		$\pm 0.20$	$\pm 0.50$	$\pm 1.00$	$\pm 2.00$	
Medium						

SYM	REVISION	DATE	BY

Date	SEPT 2021	Scale	NTS	<b>RAIL AND CART SYSTEM</b>	
Conceptualized by					
Drawn by	B.C. Lisondra	Designed by	Q.S. Checked by	Material	Stainless Steel
Recommended by	A.B. Ybanez	Approved by	R. C. La Rosa	File name	StopAs01
				 <b>DepED-BLR</b>	

D