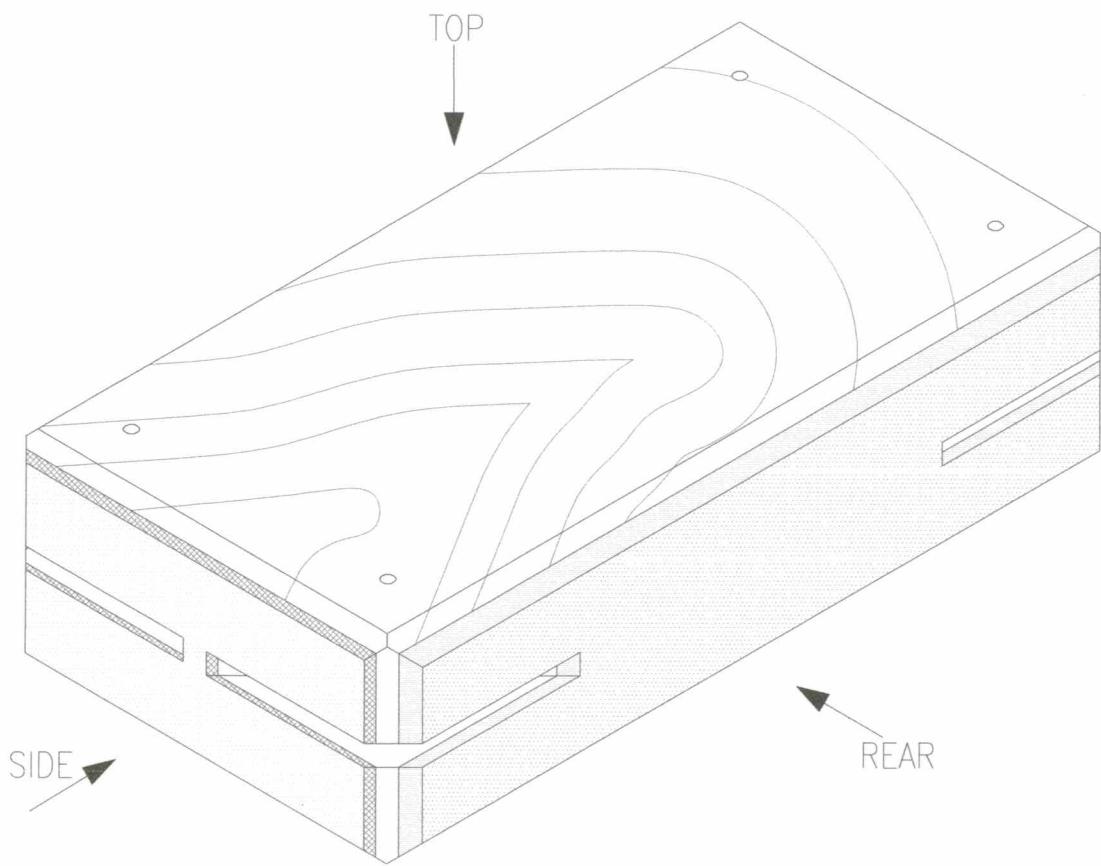


BATCH "B"



GOVERNMENT PROPERTY

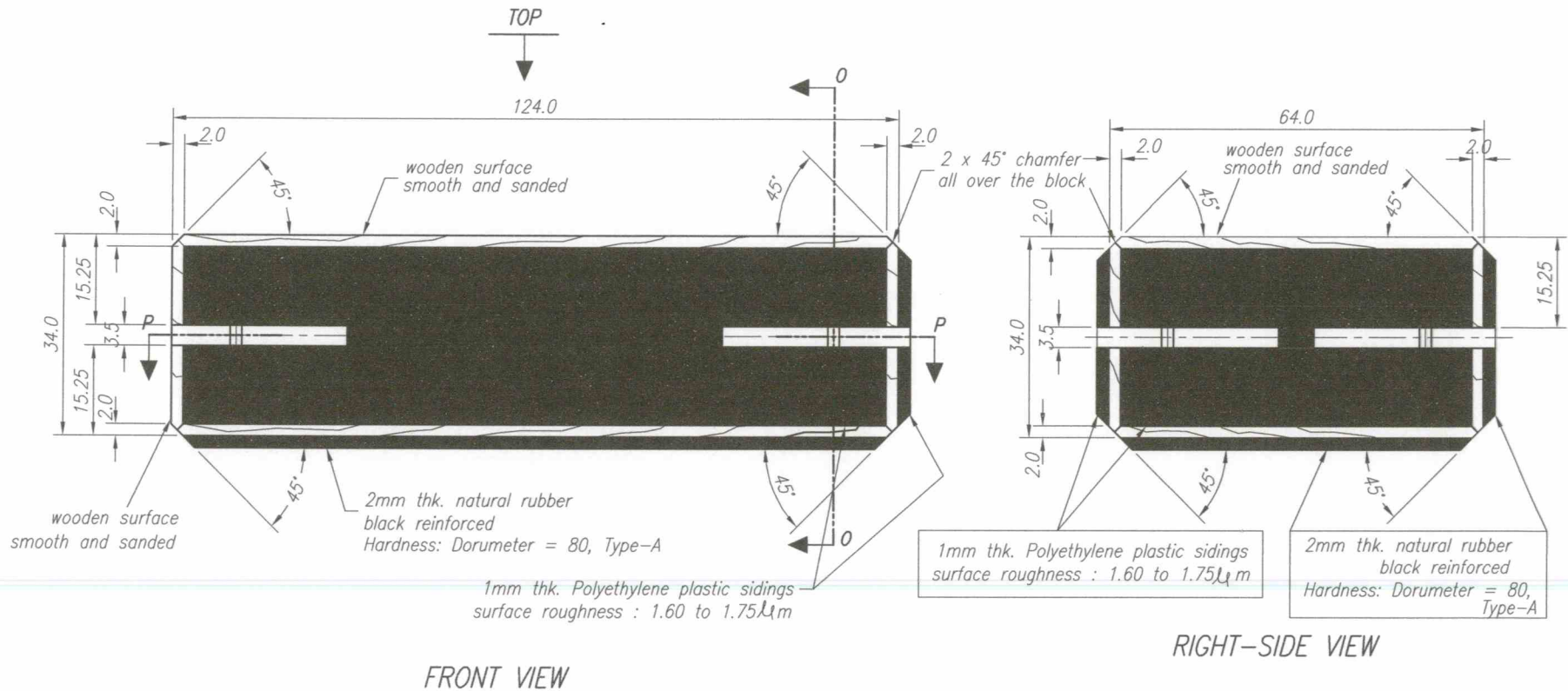
Date	SEPT 2021	Scale	NTS
Conceptualized by			
Drawn by	B.C. Lisondra	Item Name	Friction Block
Designed by		Material	Red Lawa-an
Q.C. Checked by	J.N. Aricja	Sheet	Frictionblock1
Recommended by	A.B. Ybañez	DepED-BLR	
Approved by	R. C. La Rosa		

TOLERANCES FOR LENGTH GAUGING						
Grade of Accuracy	Nominal Size	0.5 to 3	Over 3 to 6	Over 6 to 30	Over 30 to 120	Over 120 to 400
Medium		± 0.10	± 0.10	± 0.20	± 0.30	± 0.50

TOLERANCES FOR RADIUS & CHAMFERS					
Grade of Accuracy	Nominal Size	0.5 to 3	Over 3 to 6	Over 6 to 30	Over 30 to 120
Smooth Medium		± 0.20	± 0.50	± 1.00	± 2.00

SYM	REVISION	DATE	BY

BATCH "B"



FRONT VIEW

RIGHT-SIDE VIEW

NOTES: 1.) Use Araldite rapid (High Performance) epoxy adhesive (by CIBA-GEIGY) in attaching the plastic to the wood.
 2.) Use rubber cement in attaching the rubber to the wood.

* Dimensions are in millimeters except otherwise specified.
 * Smoothen all sharp edges.

GOVERNMENT PROPERTY

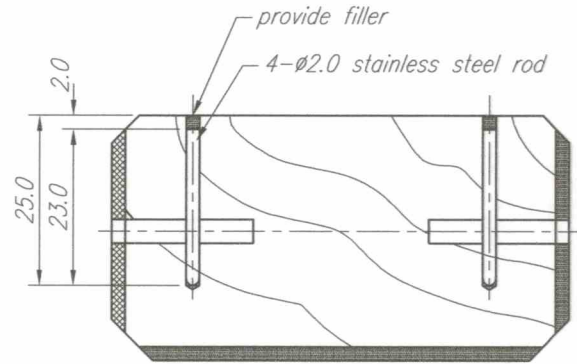
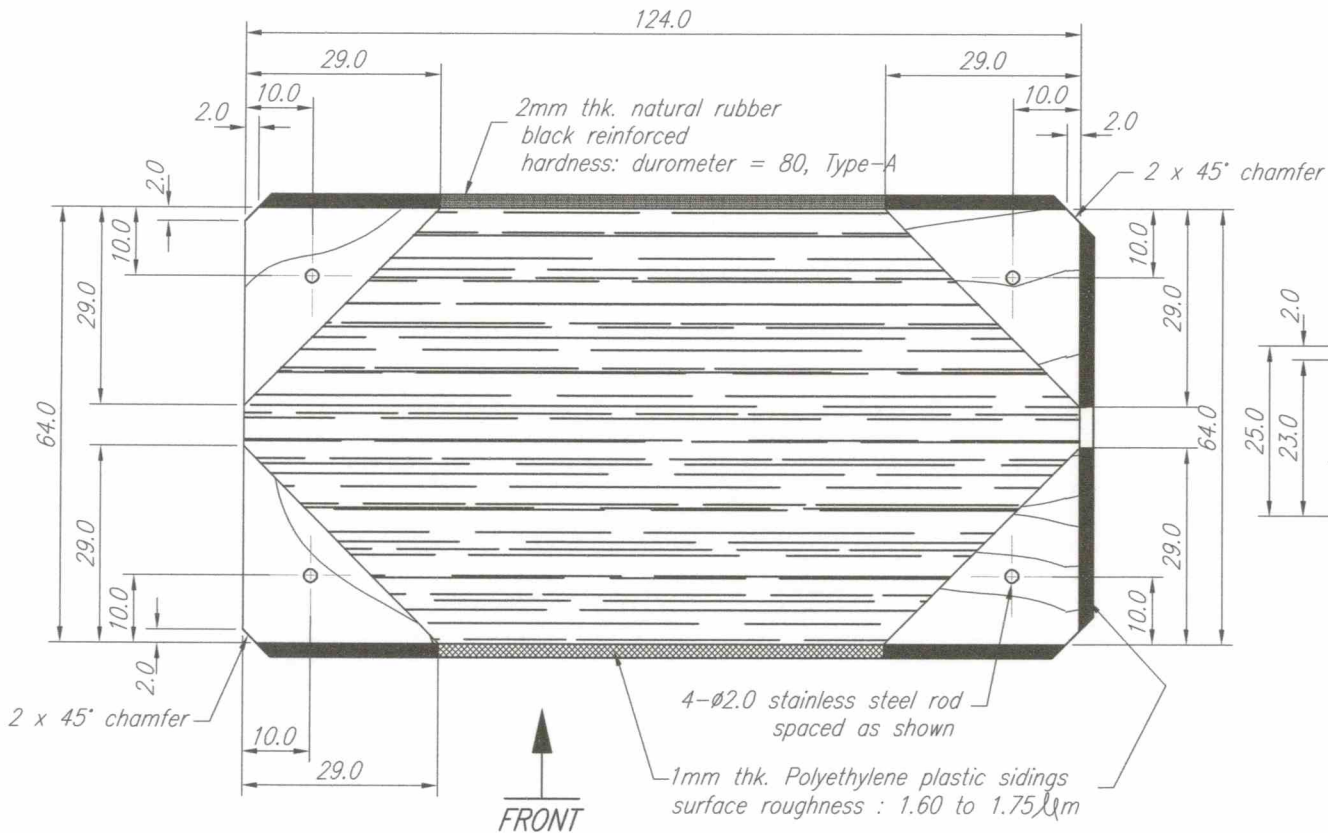
Date	SEPT 2021	Scale	NTS
Conceptualized by			
Drawn by	B.C. Lisondra		
Designed by	J.N. Arrija		
Recommended by	A.B. Ybañez		
Approved by	R. C. La Rosa		

FRICION BLOCK	
Item Name	Friction Block
Material	Kiln Dried Red Lawa-an
Sheet	Frictionblock2
DepED-BLR	

TOLERANCES FOR LENGTH GAUGING						SYM	REVISION	DATE	BY
Grade of Accuracy	Nominal Size	0.5 to 3	Over 3 to 6	Over 6 to 30	Over 30 to 120				
Medium		± 0.10	± 0.10	± 0.20	± 0.30				

TOLERANCES FOR RADIUS & CHAMFERS						SYM	REVISION	DATE	BY
Grade of Accuracy	Nominal Size	0.5 to 3	Over 3 to 6	Over 6 to 30	Over 30 to 120				
Smooth Medium		± 0.20	± 0.50	± 1.00	± 2.00				

BATCH "B"



SECTION 0-0

SECTION P-P

NOTES: 1.) Use Araldite rapid (High Performance) epoxy adhesive (by CIBA-GEIGY) in attaching the plastic to the wood.
 2.) Use rubber cement in attaching the rubber to the wood.

* Dimensions are in millimeters except otherwise specified.
 * Smoothen all sharp edges.

GOVERNMENT PROPERTY

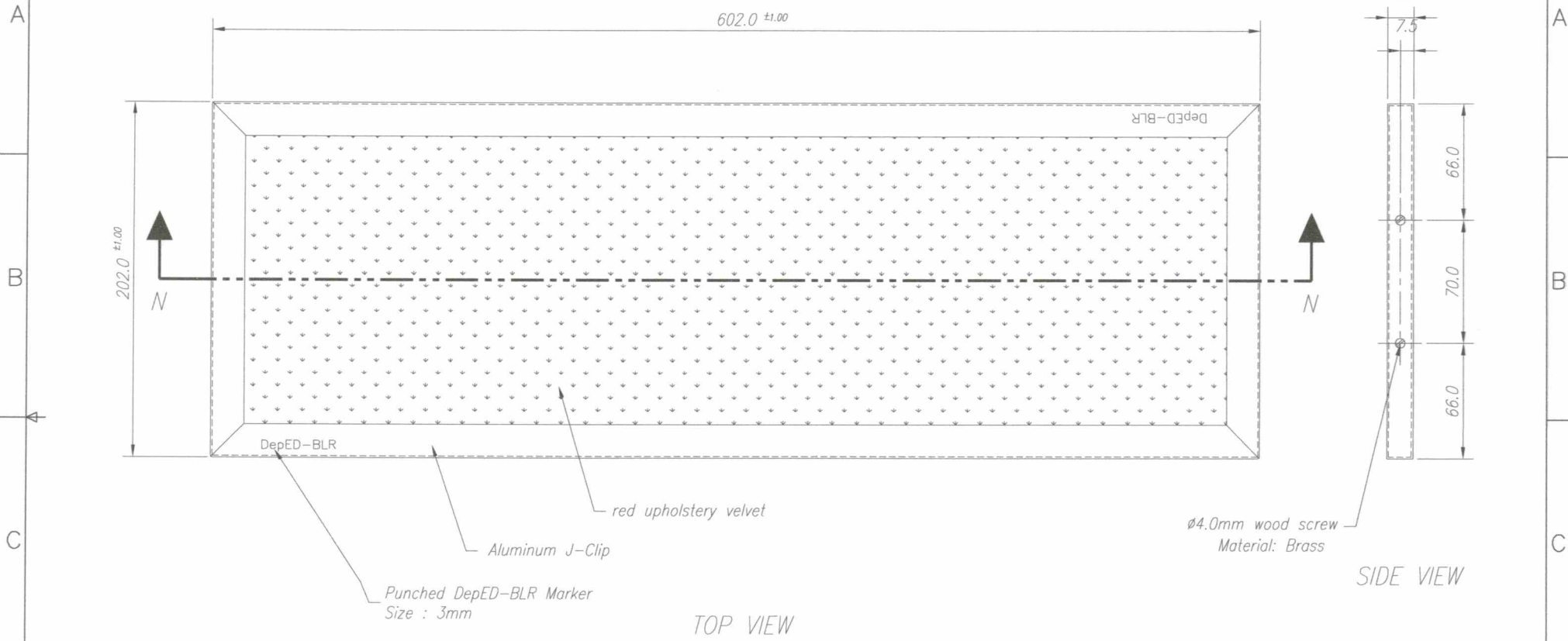
Date	SEPT 2021	Scale	NTS
Conceptualized by			
Drawn by	B.C. Lisonda		Item Name
Designed by	Q.C. Checked by		Material
	J.N. Arioja		Kiln Dried Red Lawa-an
Recommended by	A.B. Ybañez		File name
Approved by	R. C. La Rosa		Frictionblock3

FRICION BLOCK

DepED-BLR

TOLERANCES FOR LENGTH GAUGING						
Grade of Accuracy	Nominal Size	Over 0.5 to 3	Over 3 to 6	Over 6 to 30	Over 30 to 120	Over 120 to 400
Medium		± 0.10	± 0.10	± 0.20	± 0.30	± 0.50
TOLERANCES FOR RADIUS & CHAMFERS						
Grade of Accuracy	Nominal Size	Over 0.5 to 3	Over 3 to 6	Over 6 to 30	Over 30 to 120	
Smooth Medium		± 0.20	± 0.50	± 1.00	± 2.00	
SYM	REVISION	DATE	BY			

BATCH "B"



* Dimensions are in millimeters except otherwise specified.
 * Smoothen all sharp edges.

GOVERNMENT PROPERTY

Date	SEPT 2021	Scale	NTS
Conceptualized by			
Drawn by	B.C. Lisondra	Item Name	Friction Board
Designed by	B.C. Lisondra	Material	(AS SHOWN)
Checked by	J.N. Ariza	File name	Frictionblock4
Recommended by	A.B. Ybañez	DepED-BLR	
Approved by	R. C. La Rosa		

TOLERANCES FOR LENGTH GAUGING						
Grade of Accuracy	Nominal Size	Over 0.5 to 3	Over 3 to 6	Over 6 to 30	Over 30 to 120	Over 120 to 400
Medium		± 0.10	± 0.10	± 0.20	± 0.30	± 0.50

TOLERANCES FOR RADIUS & CHAMFERS					
Grade of Accuracy	Nominal Size	Over 0.5 to 3	Over 3 to 6	Over 6 to 30	Over 30 to 120
Smooth		± 0.20	± 0.50	± 1.00	± 2.00
Medium		± 0.20	± 0.50	± 1.00	± 2.00

SYM	REVISION	DATE	BY

1 2 3 4 5 6

A

B

C

D

A

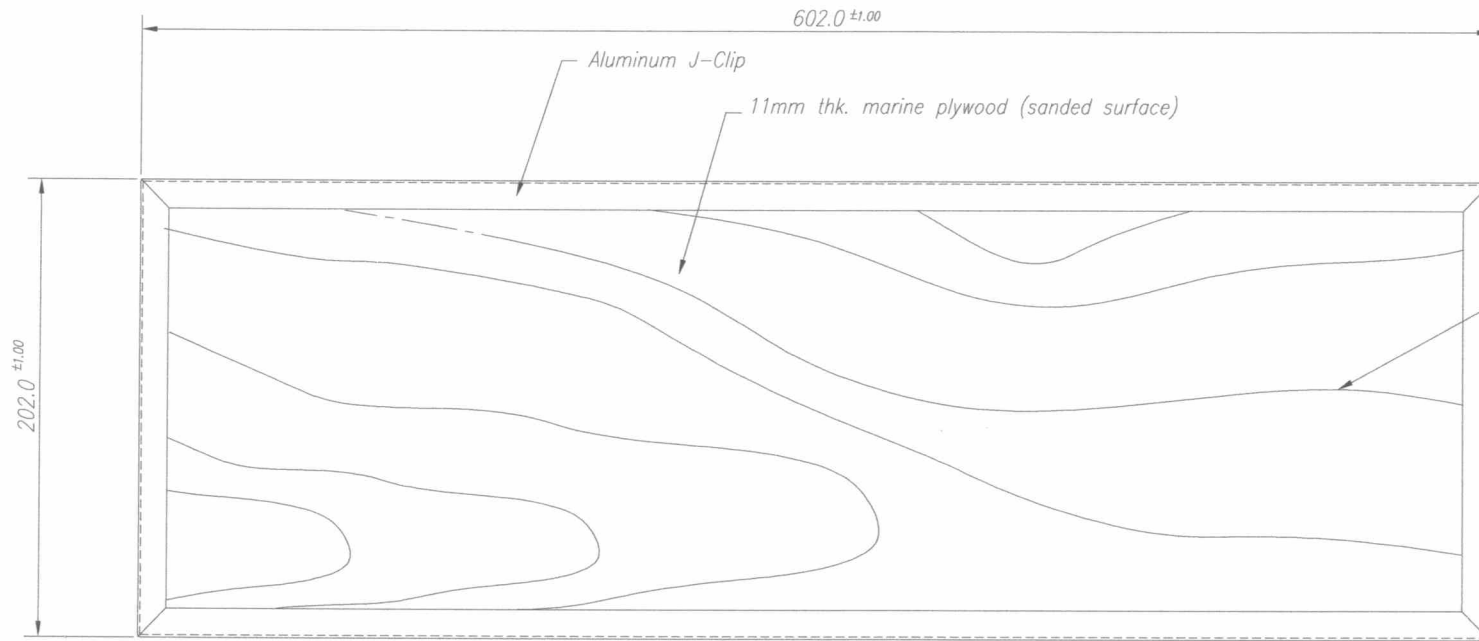
B

C

D

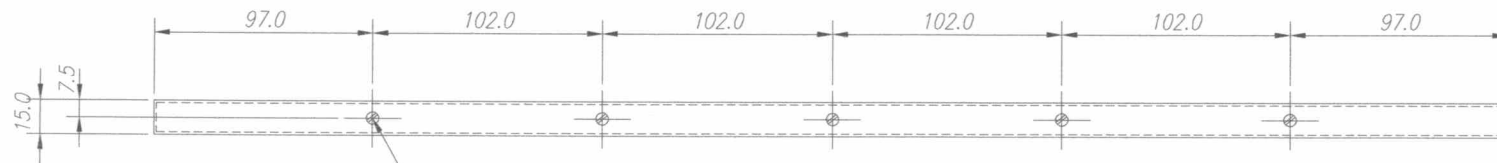
1 2 3 4 5 6

BATCH "B"



NOTE:
*Please follow the plywood's grain direction in the drawing. The grain direction is very important.

BOTTOM VIEW



REAR VIEW

* Dimensions are in millimeters except otherwise specified.
* File all sharp edges.

GOVERNMENT PROPERTY

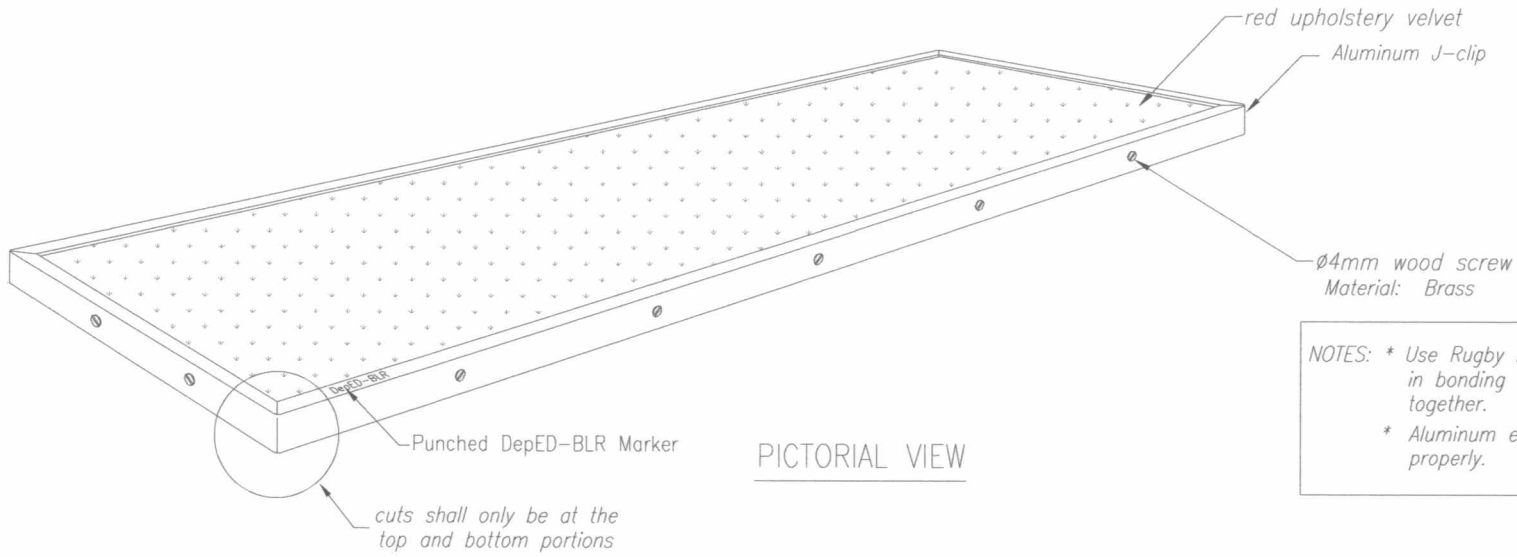
Date	SEPT 2021	Scale	NTS
Conceptualized by			
Drawn by	B.C. Lisondra	Item Name	Friction Board
Designed by		Material	(AS SHOWN)
Checked by	J.N. Aripja	Sheet	Frictionblock5
Recommended by	A.B. Ybañez	DepED-BLR	
Approved by	R. C. La Rosa		

TOLERANCES FOR LENGTH GAUGING						
Grade of Accuracy	Nominal Size	0.5 to 3	Over 3 to 6	Over 6 to 30	Over 30 to 120	Over 120 to 400
Medium		± 0.10	± 0.10	± 0.20	± 0.30	± 0.50

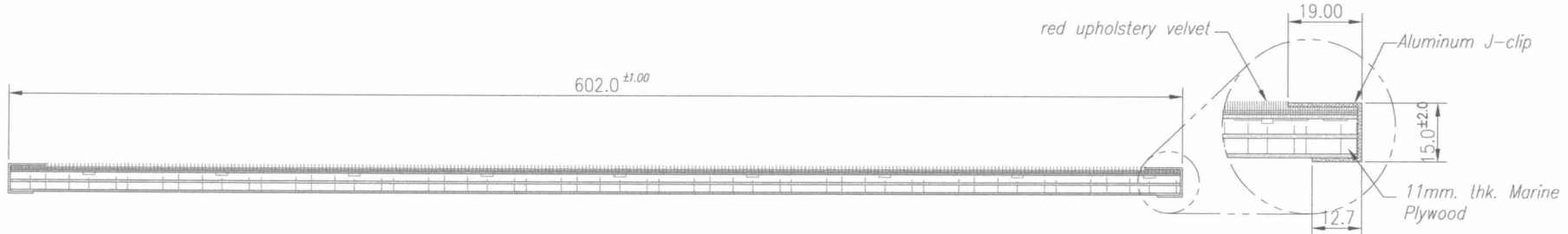
TOLERANCES FOR RADIUS & CHAMFERS					
Grade of Accuracy	Nominal Size	0.5 to 3	Over 3 to 6	Over 6 to 30	Over 30 to 120
Smooth		± 0.20	± 0.50	± 1.00	± 2.00
Medium		± 0.20	± 0.50	± 1.00	± 2.00

SYM	REVISION	DATE	BY

BATCH "B"



NOTES: * Use Rugby Rubber Cement (adhesive) in bonding the upholstery and plywood together.
 * Aluminum edging must be screwed properly.



SECTION N-N

* Dimensions are in millimeters except otherwise specified.
 * Smoothen all sharp edges.

GOVERNMENT PROPERTY

Date	SEPT 2021	Scale	NTS	FRICITION BOARD	
Conceptualized by					
Drawn by	B.C. Lisondra	Item Name	Friction Board		Sheet
Designed by	S.C.	Checked by	J.N. Arjoja	Material	(AS PER DRAWING)
Recommended by	A.B. Ybañez		DepED-BLR		
Approved by	R. C. La Rosa				
File name					Frictionblock6

TOLERANCES FOR LENGTH GAUGING						
Grade of Accuracy	Nominal Size	0.5 to 3	Over 3 to 6	Over 6 to 30	Over 30 to 120	Over 120 to 400
Medium		± 0.10	± 0.10	± 0.20	± 0.30	± 0.50
TOLERANCES FOR RADIUS & CHAMFERS						
Grade of Accuracy	Nominal Size	0.5 to 3	Over 3 to 6	Over 6 to 30	Over 30 to 120	
Smooth Medium		± 0.20	± 0.50	± 1.00	± 2.00	
SYM	REVISION	DATE	BY			