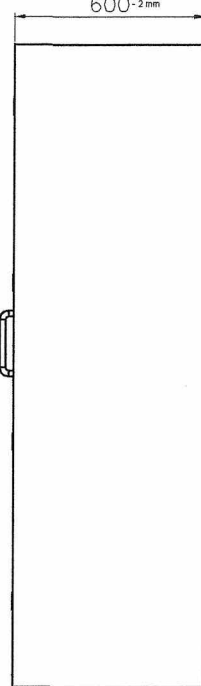
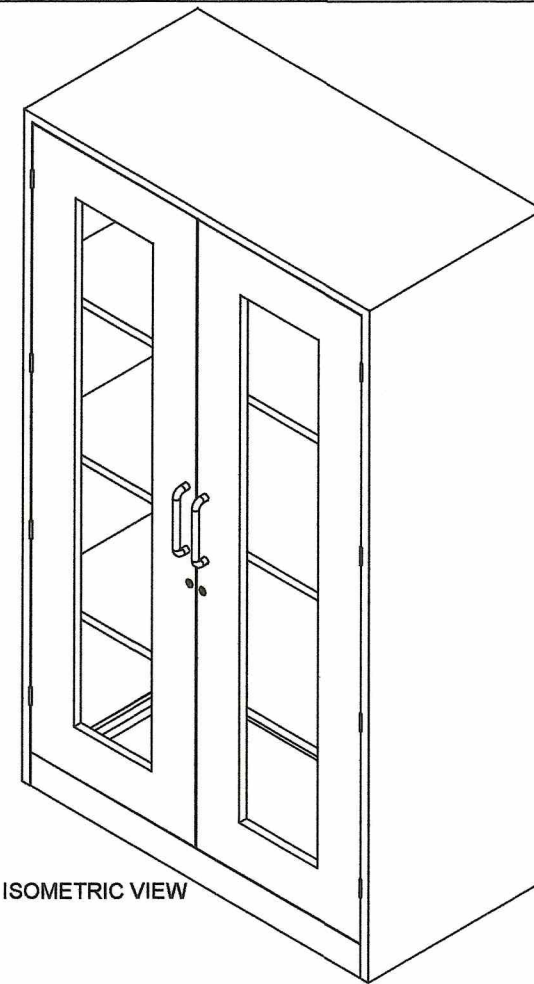


FRONT VIEW



SIDE VIEW



ISOMETRIC VIEW

Description :

- Color : PANTONE 340
- Material : 1.00mm Thick Cold-rolled Steel Sheet, 6mm thick Flexi-Glass Door
- Size : 2.0 meters x 1.20 meters x 0.6 meters
- Feature : Durable and Fashionable

About Cabinet :

1. 1.00mm thickness sheet then powder coat. (Welded surface must be hidden)
2. The cabinet body's material is cold-rolled steel
3. 2 Swinging flexi-glass doors with 2pcs stainless steel 304 handle bars (10mm diameter Stainless Steel 304 Round Bar x 7in. screw mounted in between center. 1 set (Full door 3 way CAM locking system w/ key), and 4 heavy duty detachable hinges (3 inches long) on each door.
4. 3 Adjustable and detachable shelves.
5. Locking system will make the assembly sturdy even without the rivets.
6. Locking system of the collapsible cabinet is subject to approval during sample evaluation.


NOTES:

1. All dimensions are in millimeter unless otherwise specified.
2. Remove burrs and sharp edges.

TOLERANCES FOR LENGTH GAUGING						
Grade of Accuracy	Nominal Size	0.5 to 3	Over 3 to 6	Over 6 to 30	Over 30 to 120	Over 120 to 400
Medium		± 0.10	± 0.10	± 0.20	± 0.30	± 0.50
TOLERANCES FOR RADIUS & CHAMFERS						
Grade of Accuracy	Nominal Size	0.5 to 3	Over 3 to 6	Over 6 to 30	Over 30 to 120	
Smooth		± 0.20	± 0.50	± 1.00	± 2.00	
Medium						

SYM	REVISION	DATE	BY

GOVERNMENT PROPERTY

Date	JUNE 2016	Scale	(NTS)
Conceptualized by			
Drawn by	B C Lisondra	Item Name	COLLAPSIBLE STEEL CABINET ASSEMBLY
Designed by	EC Lisondra	Material	1mm THCK COLD-ROLLED STEEL SHEET
Q.C. Checked by		Sheet	01
Recommended by	M.S. Maquilas	File name	cabinet 2016
Approved by	R. C. La Rosa	 DepED-BLR	

1 2 3 4 5 6

A

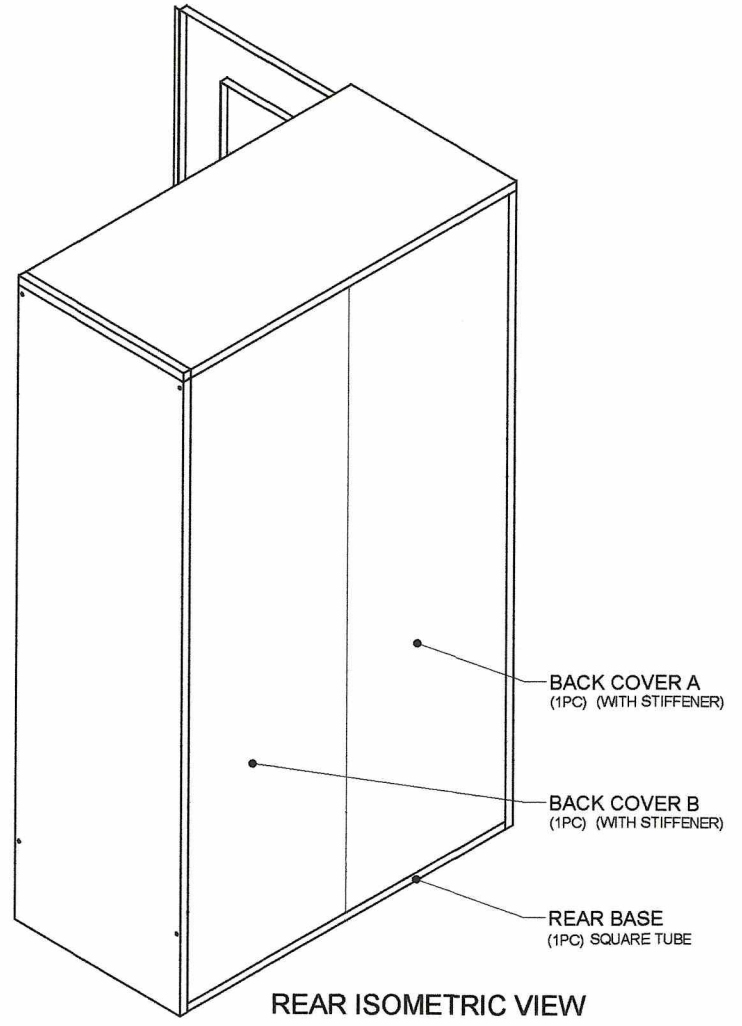
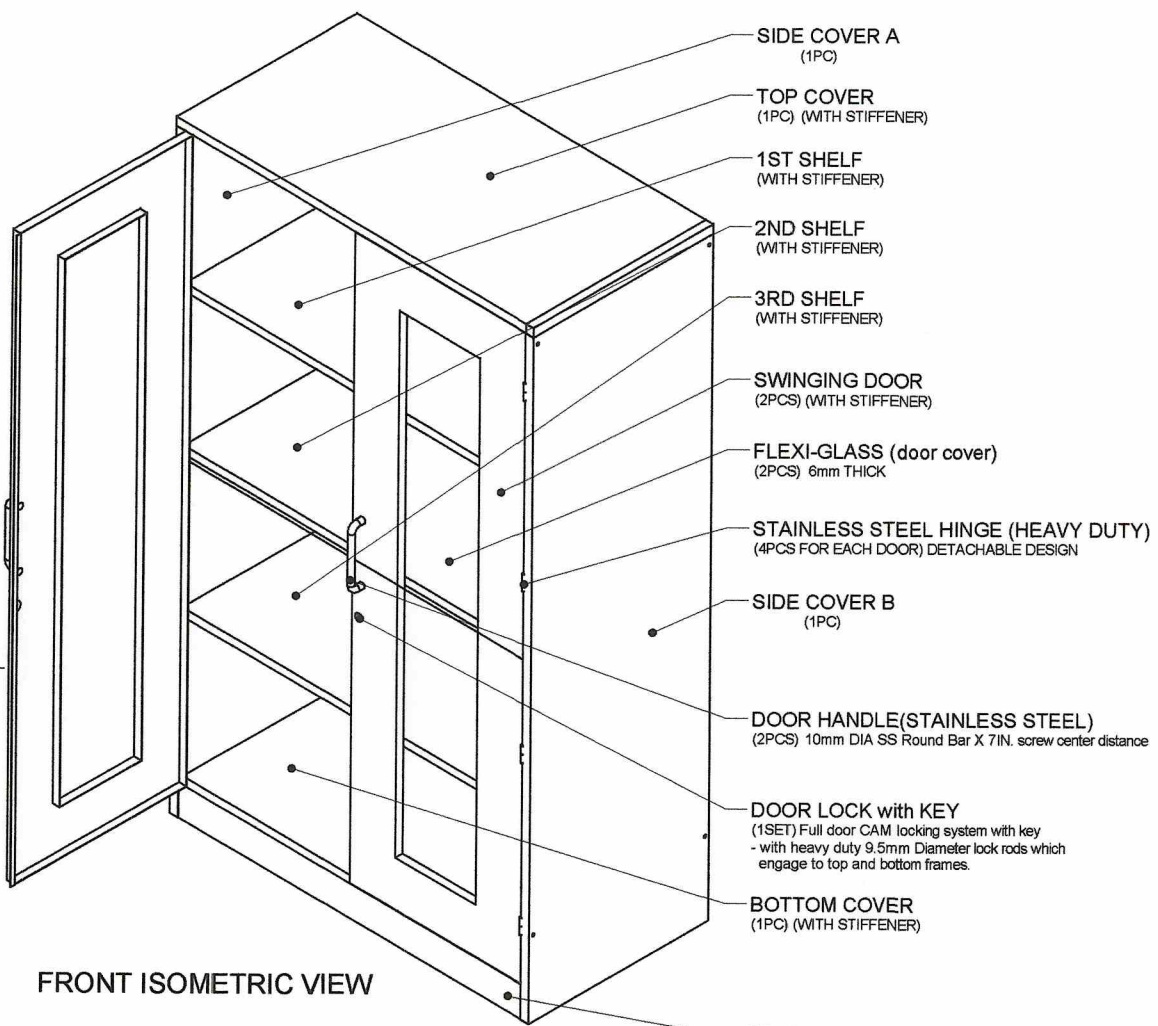
A

B

B

C

C



FRONT ISOMETRIC VIEW

REAR ISOMETRIC VIEW

FRONT BASE (1PC) REC. TUBE & SQUARE TUBE


GOVERNMENT PROPERTY

NOTES:

1. All dimensions are in millimeter unless otherwise specified
2. Remove burrs and sharp edges.

TOLERANCES FOR LENGTH GAUGING						
Grade of Accuracy	Nominal Size	0.5 to 3	Over 3 to 6	Over 6 to 30	Over 30 to 120	Over 120 to 400
Medium		± 0.10	± 0.10	± 0.20	± 0.30	± 0.50

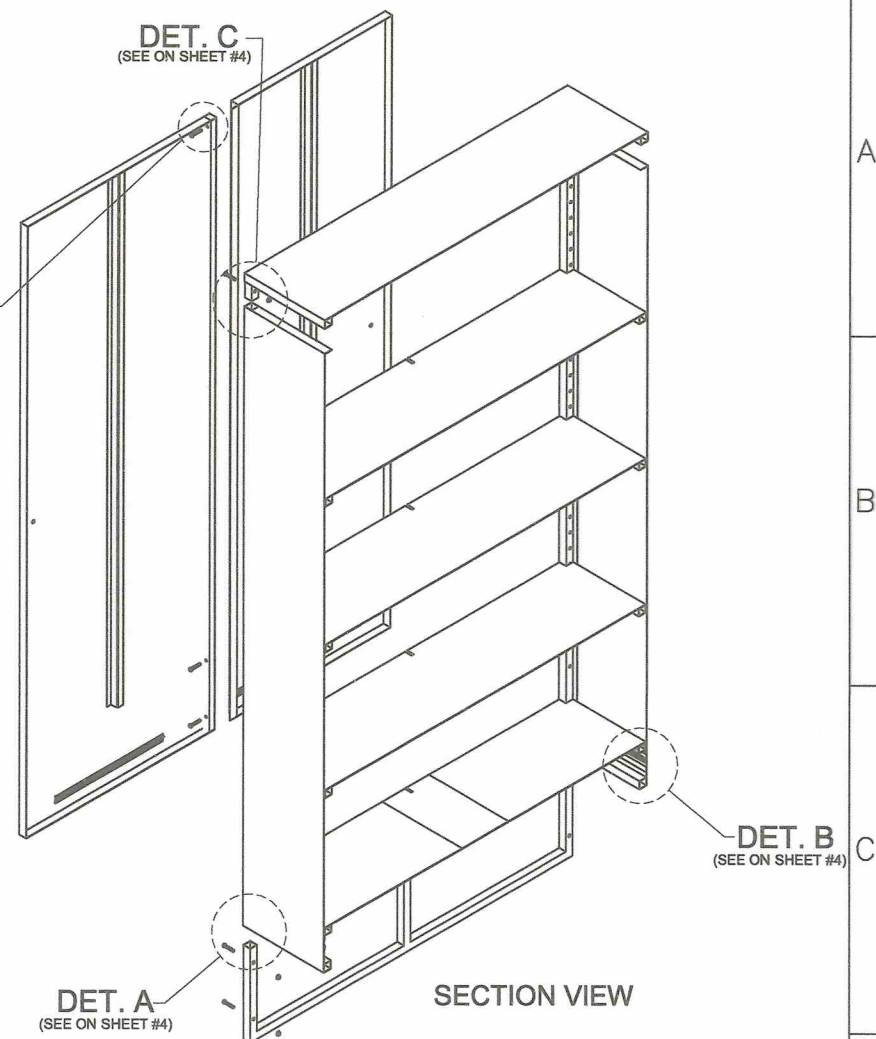
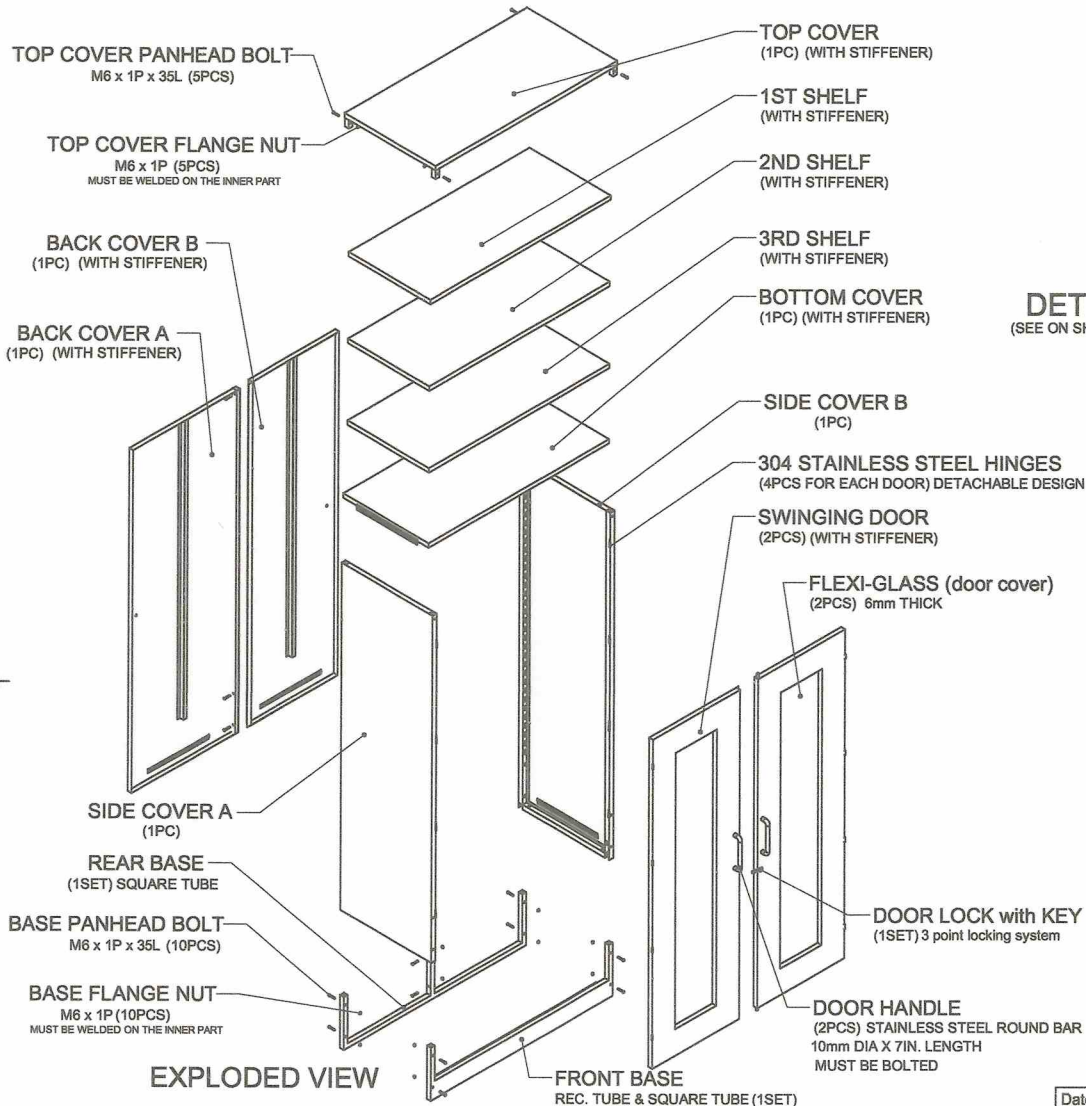
TOLERANCES FOR RADIUS & CHAMFERS					
Grade of Accuracy	Nominal Size	0.5 to 3	Over 3 to 6	Over 6 to 30	Over 30 to 120
Smooth		± 0.20	± 0.50	± 1.00	± 2.00
Medium					

Date	JUNE 2016	Scale	(NTS)	STORAGE CABINET		
Conceptualized by						
Drawn by	B C Lisondra	Item Name	COLLAPSIBLE STEEL CABINET ASSEMBLY		Sheet	02
Designed by	B C Lisondra	Material	1mm THCK COLD-ROLLED STEEL SHEET		File name	cabinet 2016
Q.C. Checked by				DepED-BLR		
Recommended by	M.S. Maquilas					
Approved by	R. C. La Rosa					

1 2 3 4 5 6

D

D



EXPLODED VIEW

SECTION VIEW

GOVERNMENT PROPERTY

- NOTES:
 1. All dimensions are in millimeter unless otherwise specified
 2. Remove burrs and sharp edges.

TOLERANCES FOR LENGTH GAUGING

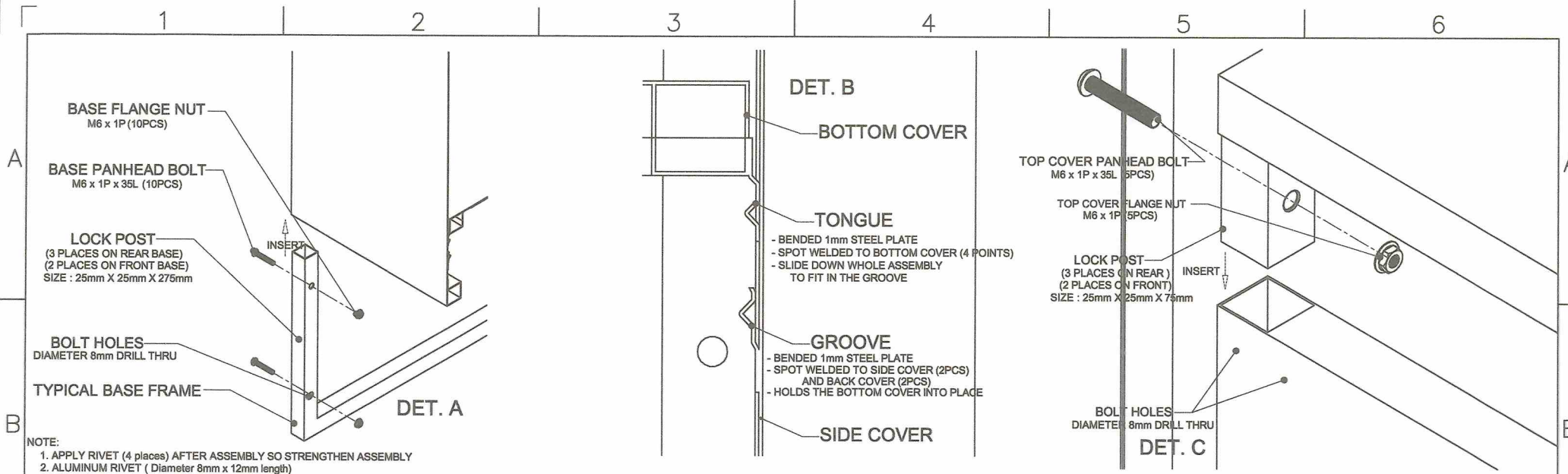
Grade of Accuracy	Nominal Size	0.5 to 3	Over 3 to 6	Over 6 to 30	Over 30 to 120	Over 120 to 400
Medium		± 0.10	± 0.10	± 0.20	± 0.30	± 0.50

TOLERANCES FOR RADIUS & CHAMFERS

Grade of Accuracy	Nominal Size	0.5 to 3	Over 3 to 6	Over 6 to 30	Over 30 to 120
Smooth		± 0.20	± 0.50	± 1.00	± 2.00
Medium					

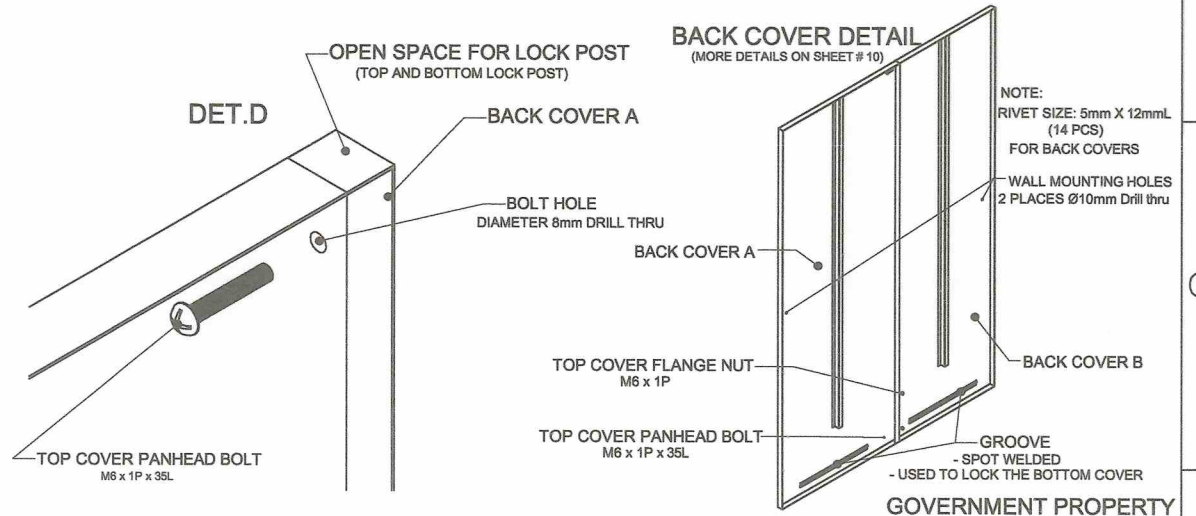
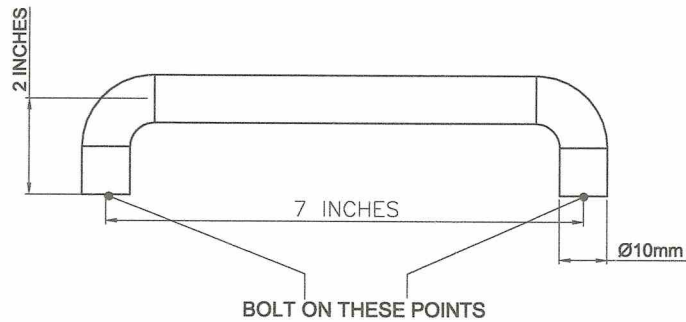
SYM	REVISION	DATE	BY

Date	JUNE 2016	Scale	(NTS)	STORAGE CABINET	
Conceptualized by					
Drawn by	BC Lisondra	Item Name	COLLAPSIBLE STEEL CABINET ASSEMBLY		Sheet 03
Designed by	BC Lisondra	Q.C. Checked by	Material		File name
Recommended by	M.S. Maquilas	1mm THCK COLD-ROLLED STEEL SHEET		cabinet 2016	
Approved by	R. C. La Rosa			<h1>DepED-BLR</h1>	



NOTE:
 1. APPLY RIVET (4 places) AFTER ASSEMBLY SO STRENGTHEN ASSEMBLY
 2. ALUMINUM RIVET (Diameter 8mm x 12mm length)

STAINLESS STEEL DOOR HANDLE
 MATERIAL : 304 STAINLESS STEEL ROUND BAR




NOTES:
 1. All dimensions are in millimeter unless otherwise specified
 2. Remove burrs and sharp edges.

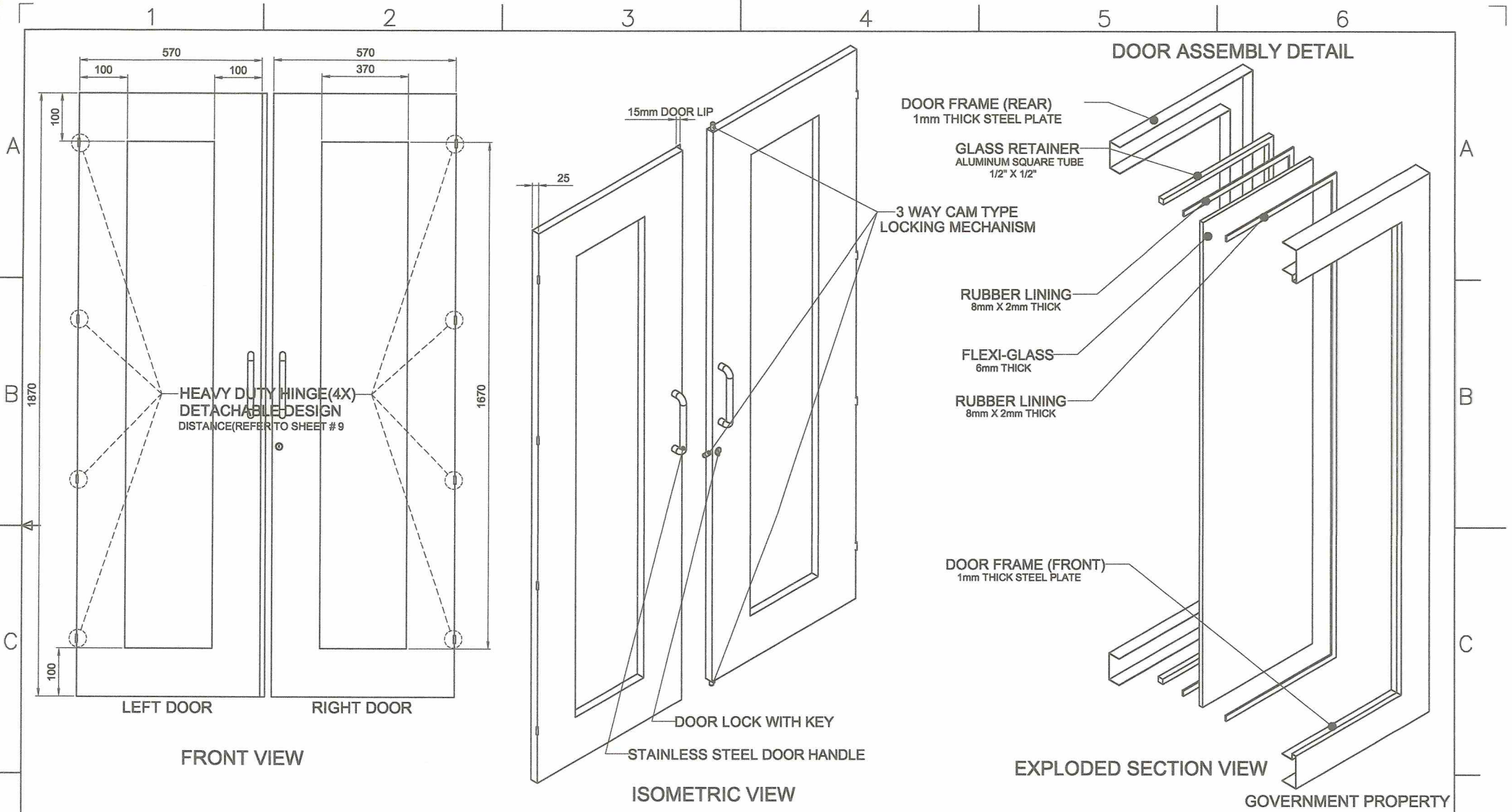
TOLERANCES FOR LENGTH GAUGING						
Grade of Accuracy	Nominal Size	0.5 to 3	Over 3 to 6	Over 6 to 30	Over 30 to 120	Over 120 to 400
Medium		± 0.10	± 0.10	± 0.20	± 0.30	± 0.50

TOLERANCES FOR RADIUS & CHAMFERS					
Grade of Accuracy	Nominal Size	0.5 to 3	Over 3 to 6	Over 6 to 30	Over 30 to 120
Smooth		± 0.20	± 0.50	± 1.00	± 2.00
Medium					

SYM	REVISION	DATE	BY

Date	JUNE 2016	Scale	(NTS)
Conceptualized by			
Drawn by	BC Lisondra	Item Name	STORAGE CABINET
Designed by	BC Lisondra	Material	COLLAPSIBLE STEEL CABINET DETAILS
Checked by	Q.S.	Sheet	04
Recommended by	M.S. Maquilas	File name	1mm THCK COLD-ROLLED STEEL SHEET cabinet 2016
Approved by	R. C. La Rosa	 DepED-BLR	

GOVERNMENT PROPERTY



NOTES:
 1. All dimensions are in millimeter unless otherwise specified
 2. Remove burrs and sharp edges.

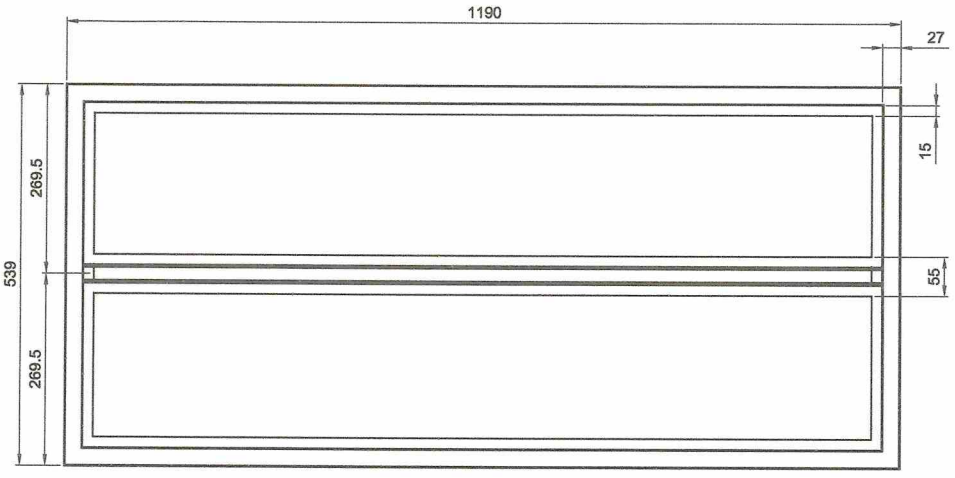
TOLERANCES FOR LENGTH GAUGING						
Grade of Accuracy	Nominal Size	0.5 to 3	Over 3 to 6	Over 6 to 30	Over 30 to 120	Over 120 to 400
Medium		± 0.10	± 0.10	± 0.20	± 0.30	± 0.50

TOLERANCES FOR RADIUS & CHAMFERS						
Grade of Accuracy	Nominal Size	0.5 to 3	Over 3 to 6	Over 6 to 30	Over 30 to 120	
Smooth		± 0.20	± 0.50	± 1.00	± 2.00	
Medium						

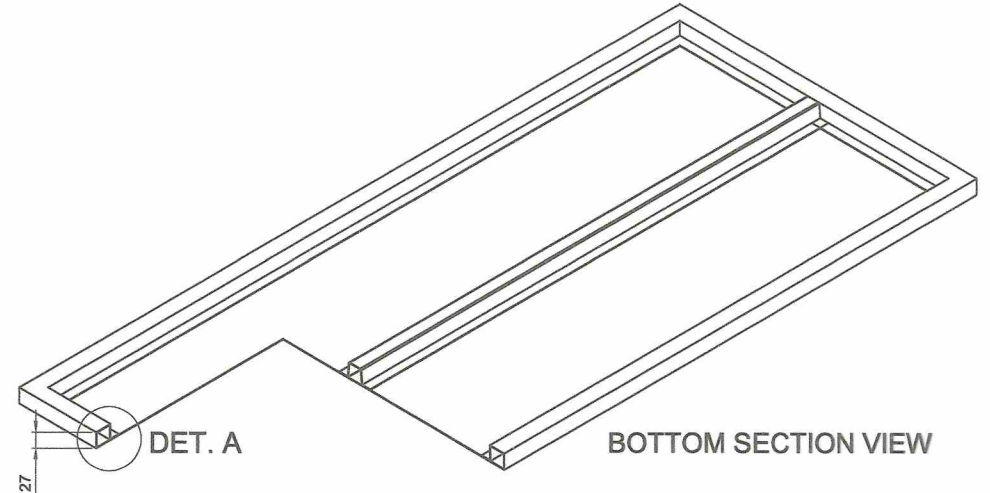
Date	JUNE 2016	Scale	(NTS)	STORAGE CABINET	
Conceptualized by					
Drawn by	BC Lisondra	Item Name	DOOR DETAIL	Sheet	05
Designed by	BC Lisondra	Material	1mm THCK COLD-ROLLED STEEL SHEET	File name	cabinet
Recommended by	M.S. Maquilas	DepED-BLR			
Approved by	R. C. La Rosa				



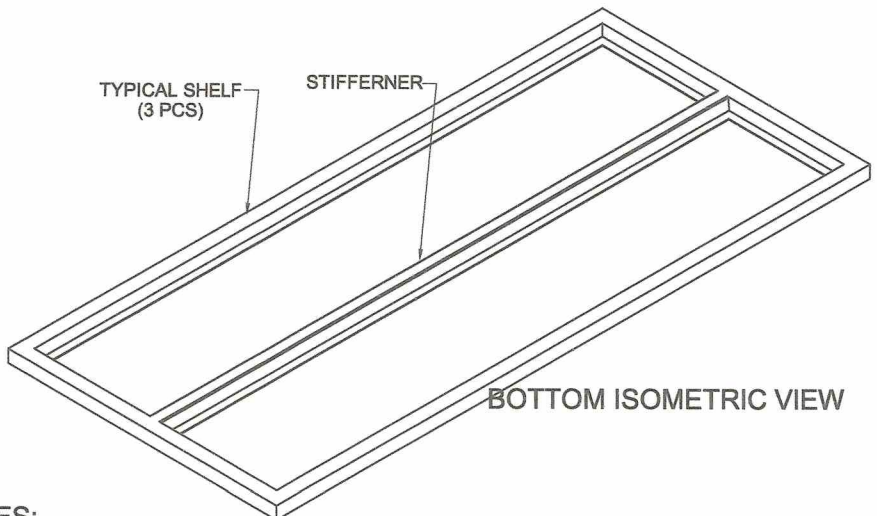
GOVERNMENT PROPERTY



TOP VIEW

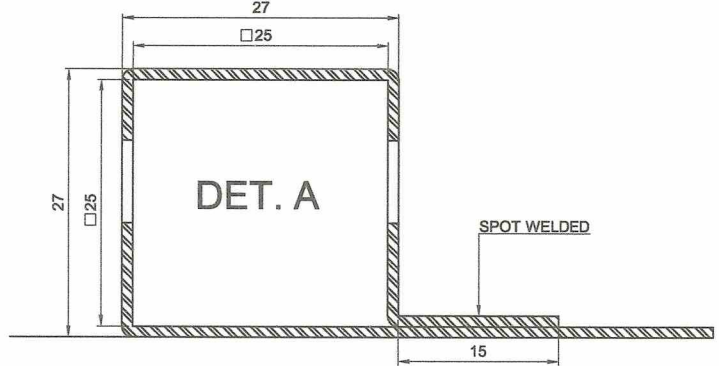


BOTTOM SECTION VIEW



BOTTOM ISOMETRIC VIEW

TYPICAL BENDING DETAIL



SECTION VIEW

GOVERNMENT PROPERTY

- NOTES:**
1. All dimensions are in millimeter unless otherwise specified
 2. Remove burrs and sharp edges.

TOLERANCES FOR LENGTH GAUGING						
Grade of Accuracy	Nominal Size	0.5 to 3	Over 3 to 6	Over 6 to 30	Over 30 to 120	Over 120 to 400
Medium		± 0.10	± 0.10	± 0.20	± 0.30	± 0.50

TOLERANCES FOR RADIUS & CHAMFERS					
Grade of Accuracy	Nominal Size	0.5 to 3	Over 3 to 6	Over 6 to 30	Over 30 to 120
Smooth		± 0.20	± 0.50	± 1.00	± 2.00
Medium					

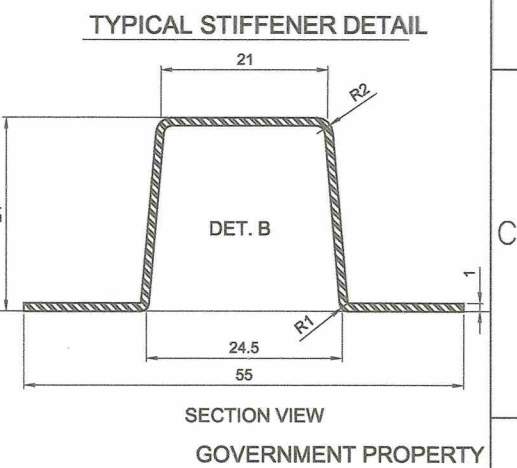
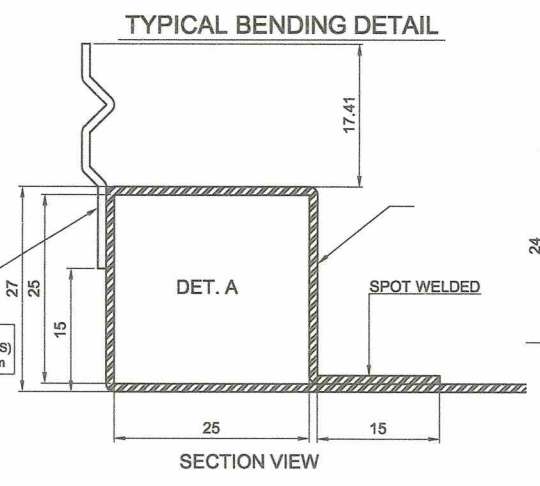
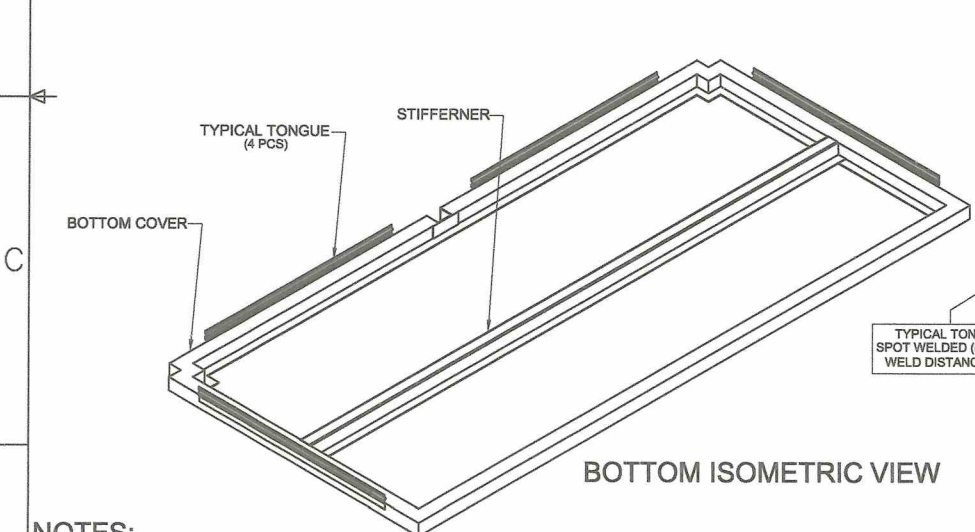
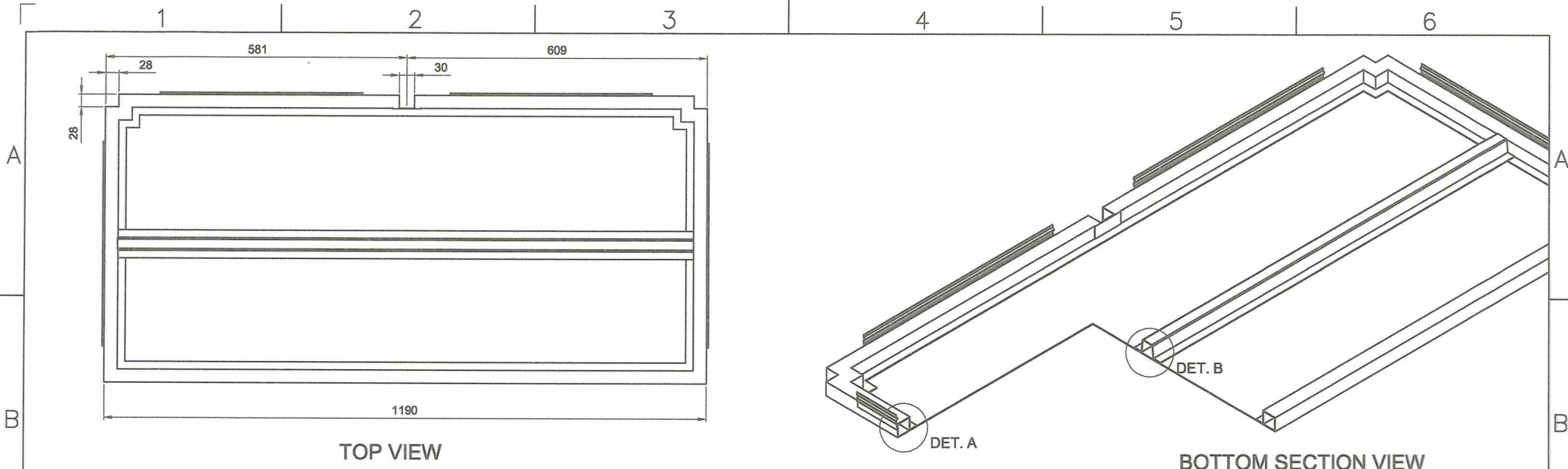
SYM	REVISION	DATE	BY

Date	JUNE 2016	Scale	(NTS)
Conceptualized by			
Drawn by	B C Lisondra		
Designed by	BC Lisondra	Q.C. Checked by	
Recommended by	M.S. Maquilas		
Approved by	R. C. La Rosa		

STORAGE CABINET	
Item Name	TYPICAL SHELF DETAIL
Material	1mm THCK COLD-ROLLED STEEL SHEET
Sheet	06
File name	cabinet

DepED-BLR

KAGAWARAN NG EDUKASYON
REPUBLICA NG PILIPINAS




NOTES:
 1. All dimensions are in millimeter unless otherwise specified
 2. Remove burrs and sharp edges.

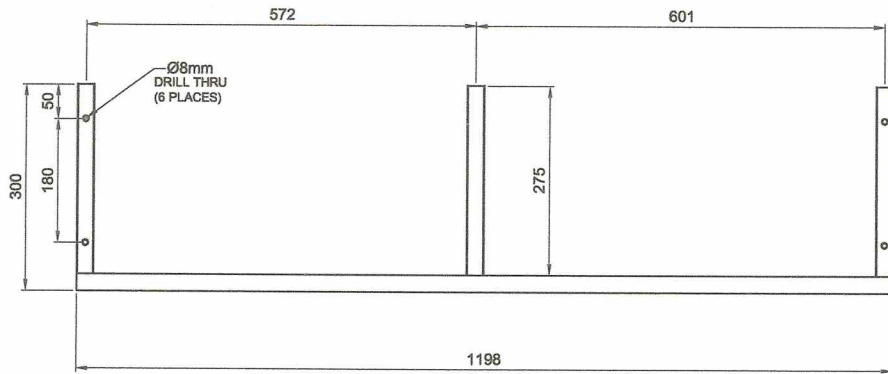
TOLERANCES FOR LENGTH GAUGING						
Grade of Accuracy	Nominal Size	0.5 to 3	Over 3 to 6	Over 6 to 30	Over 30 to 120	Over 120 to 400
Medium		± 0.10	± 0.10	± 0.20	± 0.30	± 0.50

TOLERANCES FOR RADIUS & CHAMFERS						
Grade of Accuracy	Nominal Size	0.5 to 3	Over 3 to 6	Over 6 to 30	Over 30 to 120	
Smooth		± 0.20	± 0.50	± 1.00	± 2.00	
Medium						

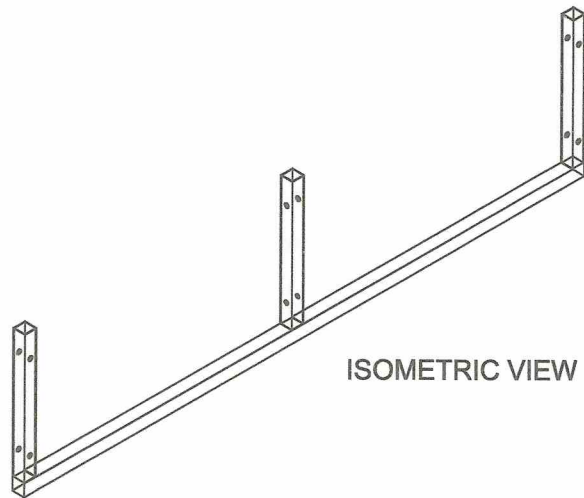
SYM	REVISION	DATE	BY

Date	JUNE 2016	Scale	(NTS)	STORAGE CABINET	
Conceptualized by					
Drawn by	BC Lisondra	Item Name	BOTTOM COVER DETAIL	Sheet	07
Designed by	BC Lisondra	Material	1mm THCK COLD-ROLLED STEEL SHEET	File name	cabinet
Recommended by	M.S. Maquilas	 DepED-BLR			
Approved by	R. C. La Rosa				

REAR BASE FRAME

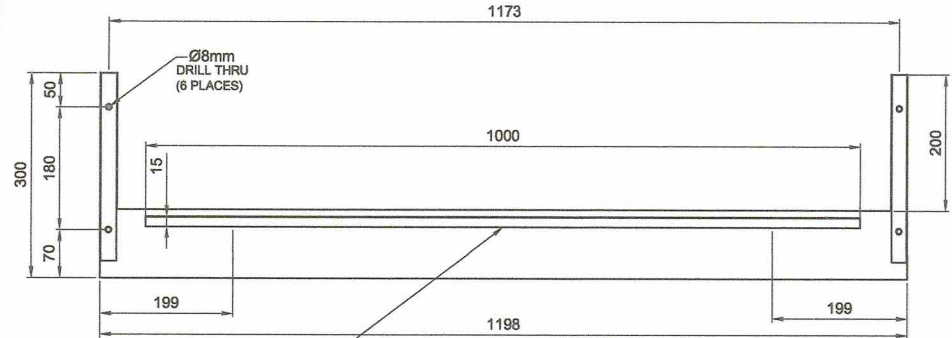


FRONT VIEW

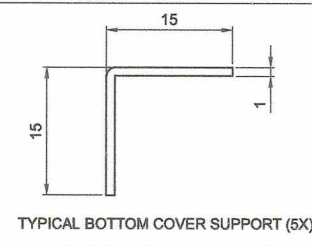


ISOMETRIC VIEW

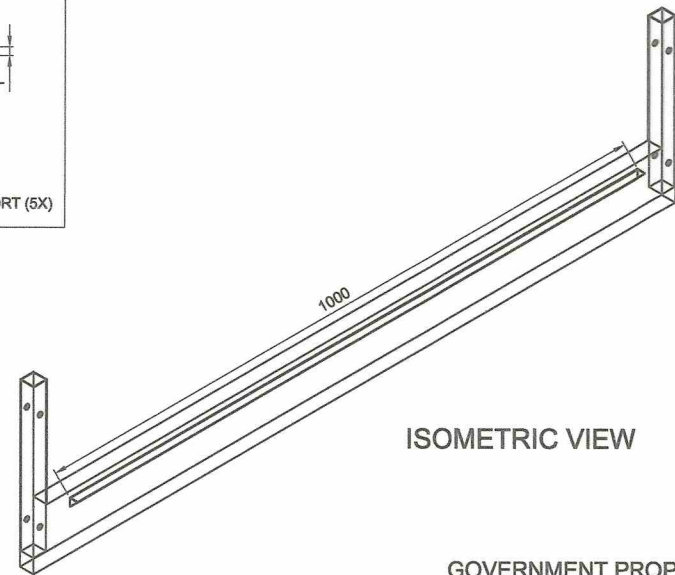
FRONT BASE FRAME



FRONT VIEW



TYPICAL BOTTOM COVER SUPPORT (5X)



ISOMETRIC VIEW

NOTES:

1. All dimensions are in millimeter unless otherwise specified
2. Remove burrs and sharp edges.

TOLERANCES FOR LENGTH GAUGING

Grade of Accuracy	Nominal Size	Over		Over	
		0.5 to 3	3 to 6	6 to 30	30 to 120
Medium		± 0.10	± 0.10	± 0.20	± 0.30
				± 0.50	± 0.50

TOLERANCES FOR RADIUS & CHAMFERS

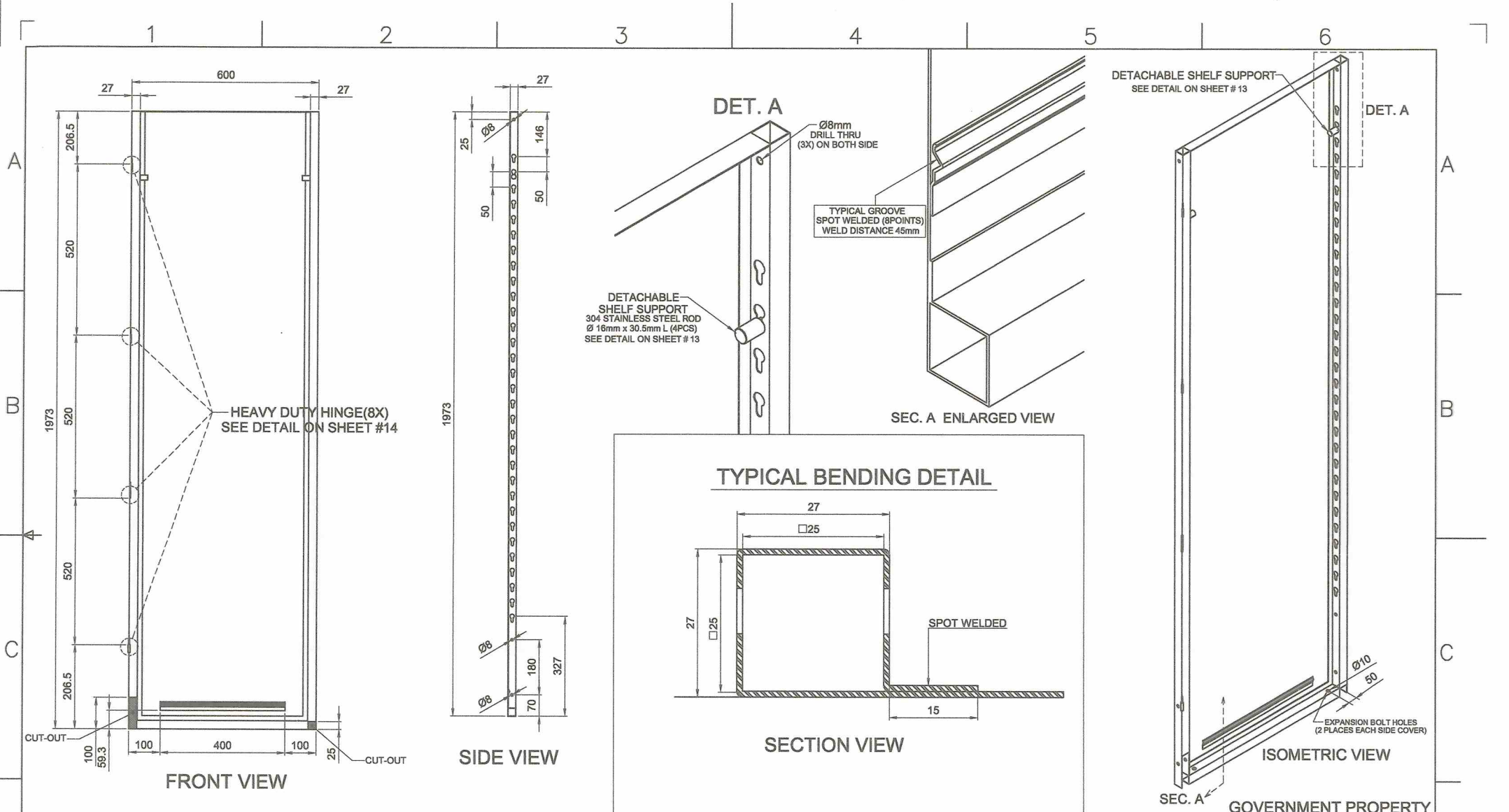
Grade of Accuracy	Nominal Size	Over		Over	
		0.5 to 3	3 to 6	6 to 30	30 to 120
Smooth		± 0.20	± 0.50	± 1.00	± 2.00
Medium					

SYM	REVISION	DATE	BY

GOVERNMENT PROPERTY

Date	JUNE 2016	Scale	(NTS)	STORAGE CABINET	
Conceptualized by					
Drawn by	BC Lisondra			BASE FRAMES	08
Designed by	BC Lisondra			Material	File name
Q.C. Checked by				1mm THICK SQUARE TUBE AND REC. TUBE	cabinet
Recommended by	M.S. Maquilas			DepED-BLR	
Approved by	R. C. La Rosa				





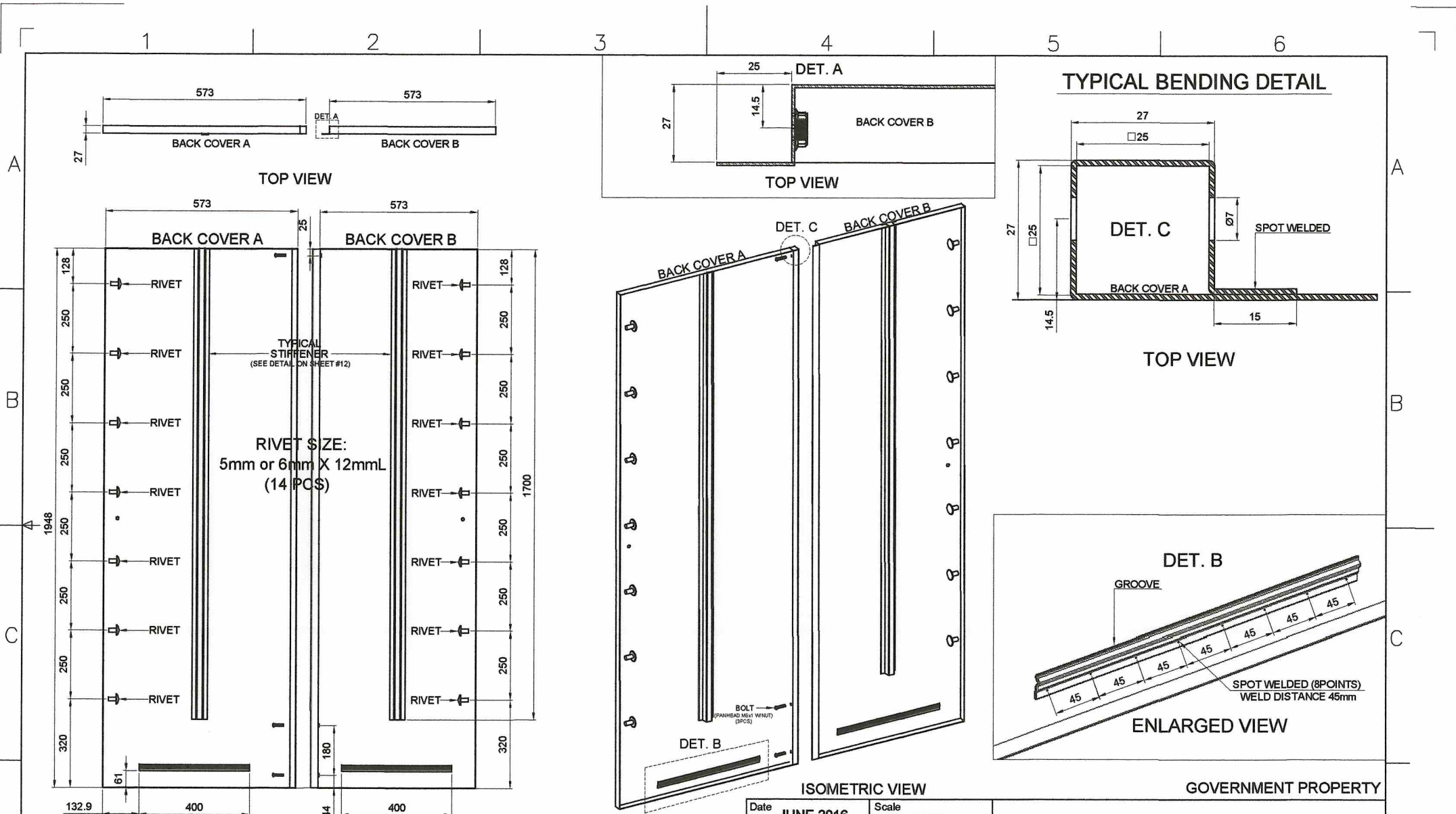
- NOTES:**
1. All dimensions are in millimeter unless otherwise specified
 2. Remove burrs and sharp edges.

TOLERANCES FOR LENGTH GAUGING						
Grade of Accuracy	Nominal Size	0.5 to 3	Over 3 to 6	Over 6 to 30	Over 30 to 120	Over 120 to 400
Medium		± 0.10	± 0.10	± 0.20	± 0.30	± 0.50

TOLERANCES FOR RADIUS & CHAMFERS					
Grade of Accuracy	Nominal Size	0.5 to 3	Over 3 to 6	Over 6 to 30	Over 30 to 120
Smooth		± 0.20	± 0.50	± 1.00	± 2.00

SYM	REVISION	DATE	BY

Date	JUNE 2016	Scale	(NTS)
Conceptualized by			
Drawn by	BC Lisondra	Item Name	TYPICAL SIDE COVER DETAIL
Designed by	BC Lisondra	Material	1mm THICK COLD-ROLLED STEEL SHEET
Q.C. Checked by		Sheet	09
Recommended by	M.S. Maquilas	File name	cabinet
Approved by	R. C. La Rosa	 DepED-BLR	



NOTES:
 1. All dimensions are in millimeter unless otherwise specified
 2. Remove burrs and sharp edges.

TOLERANCES FOR LENGTH GAUGING						
Grade of Accuracy	Nominal Size	0.5 to 3	Over 3 to 6	Over 6 to 30	Over 30 to 120	Over 120 to 400
Medium		± 0.10	± 0.10	± 0.20	± 0.30	± 0.50

TOLERANCES FOR RADIUS & CHAMFERS					
Grade of Accuracy	Nominal Size	0.5 to 3	Over 3 to 6	Over 6 to 30	Over 30 to 120
Smooth Medium		± 0.20	± 0.50	± 1.00	± 2.00


REVISION	DATE	BY

Date **JUNE 2016** Scale (NTS)
 Conceptualized by
 Drawn by **B C Lisondra**
 Designed by **B C Lisondra** C.C. Checked by
 Recommended by **M.S. Maquilas**
 Approved by **R. C. La Rosa**

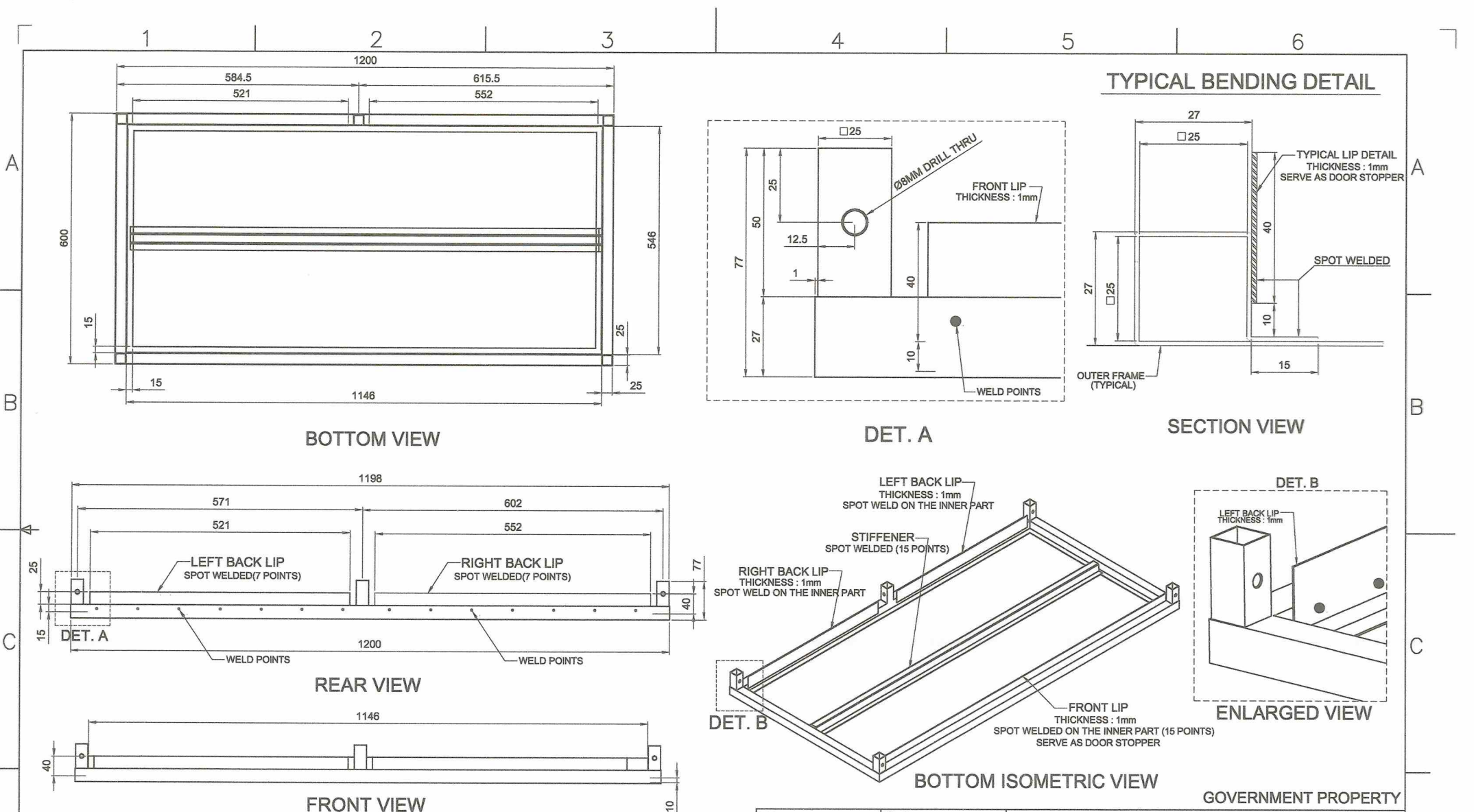
GOVERNMENT PROPERTY

STORAGE CABINET

Item Name BACK COVER A & B DETAIL	Sheet 10
Material 1mm THICK COLD-ROLLED STEEL SHEET	File name cabinet



DepED-BlR



- NOTES:**
 1. All dimensions are in millimeter unless otherwise specified
 2. Remove burrs and sharp edges.

TOLERANCES FOR LENGTH GAUGING						
Grade of Accuracy	Nominal Size	0.5 to 3	Over 3 to 6	Over 6 to 30	Over 30 to 120	Over 120 to 400
Medium		± 0.10	± 0.10	± 0.20	± 0.30	± 0.50

TOLERANCES FOR RADIUS & CHAMFERS					
Grade of Accuracy	Nominal Size	0.5 to 3	Over 3 to 6	Over 6 to 30	Over 30 to 120
Smooth		± 0.20	± 0.50	± 1.00	± 2.00

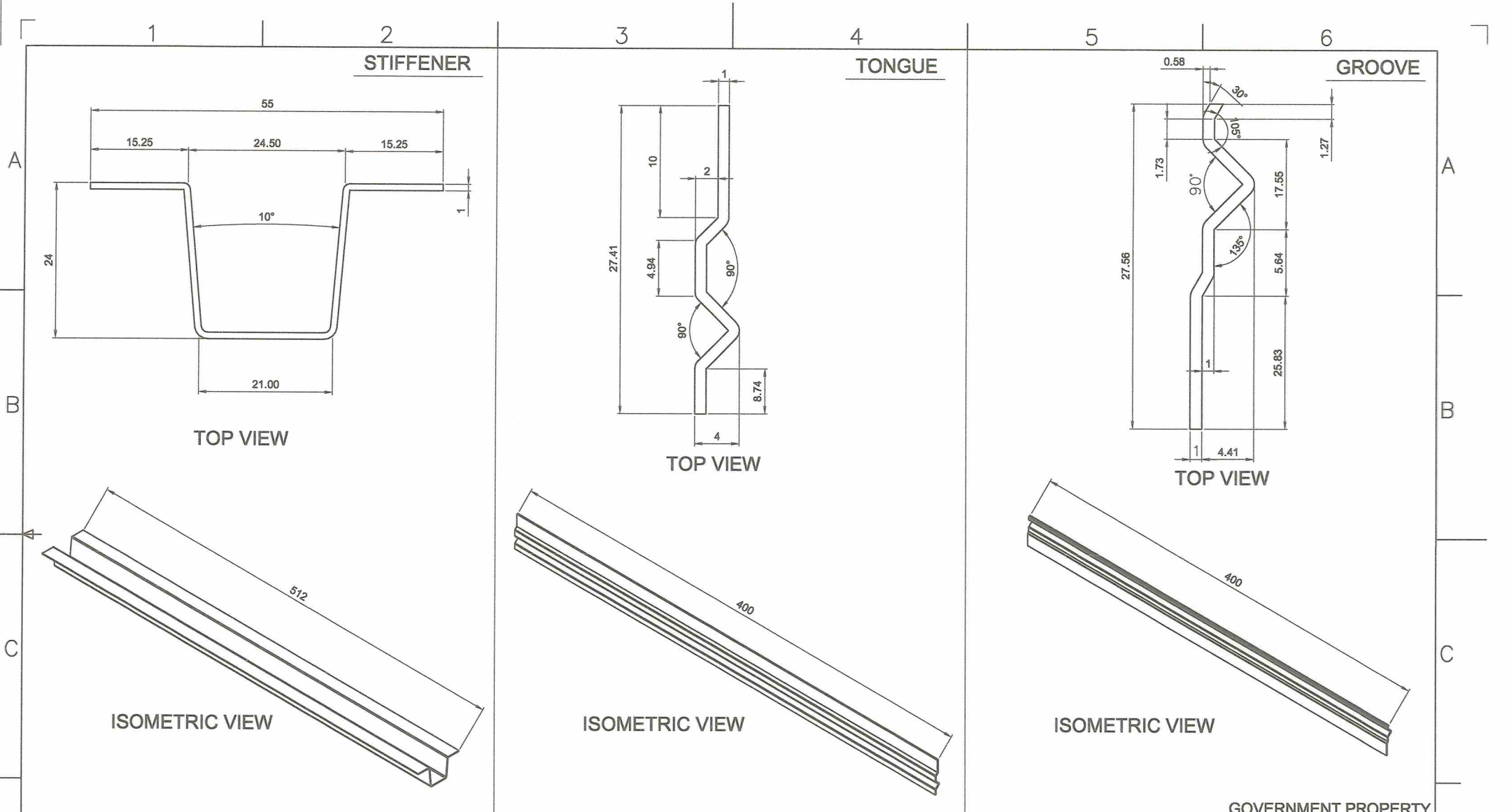
SYM	REVISION	DATE	BY

Date	JUNE 2016	Scale	(NTS)	STORAGE CABINET	
Conceptualized by					
Drawn by	B C Lisondra			Item Name	Sheet
Designed by	B C Lisondra			TOP COVER DETAIL	11
Recommended by	M.S. Maquilas			Material	File name
Approved by	R. C. La Rosa			1mm THICK COLD-ROLLED STEEL SHEET	cabinet

DepED-BLR

GOVERNMENT PROPERTY





GOVERNMENT PROPERTY

NOTES:
 1. All dimensions are in millimeter unless otherwise specified
 2. Remove burrs and sharp edges.

Date **JUNE 2016** Scale **(NTS)**
 Conceptualized by
 Drawn by **BC Lisondra**
 Designed by **BC Lisondra** Q.C. Checked by
 Recommended by **M.S. Maquilas**
 Approved by **R. C. La Rosa**

STORAGE CABINET
 Item Name **TYPICAL VARIOUS PARTS DETAIL** Sheet **12**
 Material **1mm THICK COLD-ROLLED STEEL SHEET** File name **cabinet**

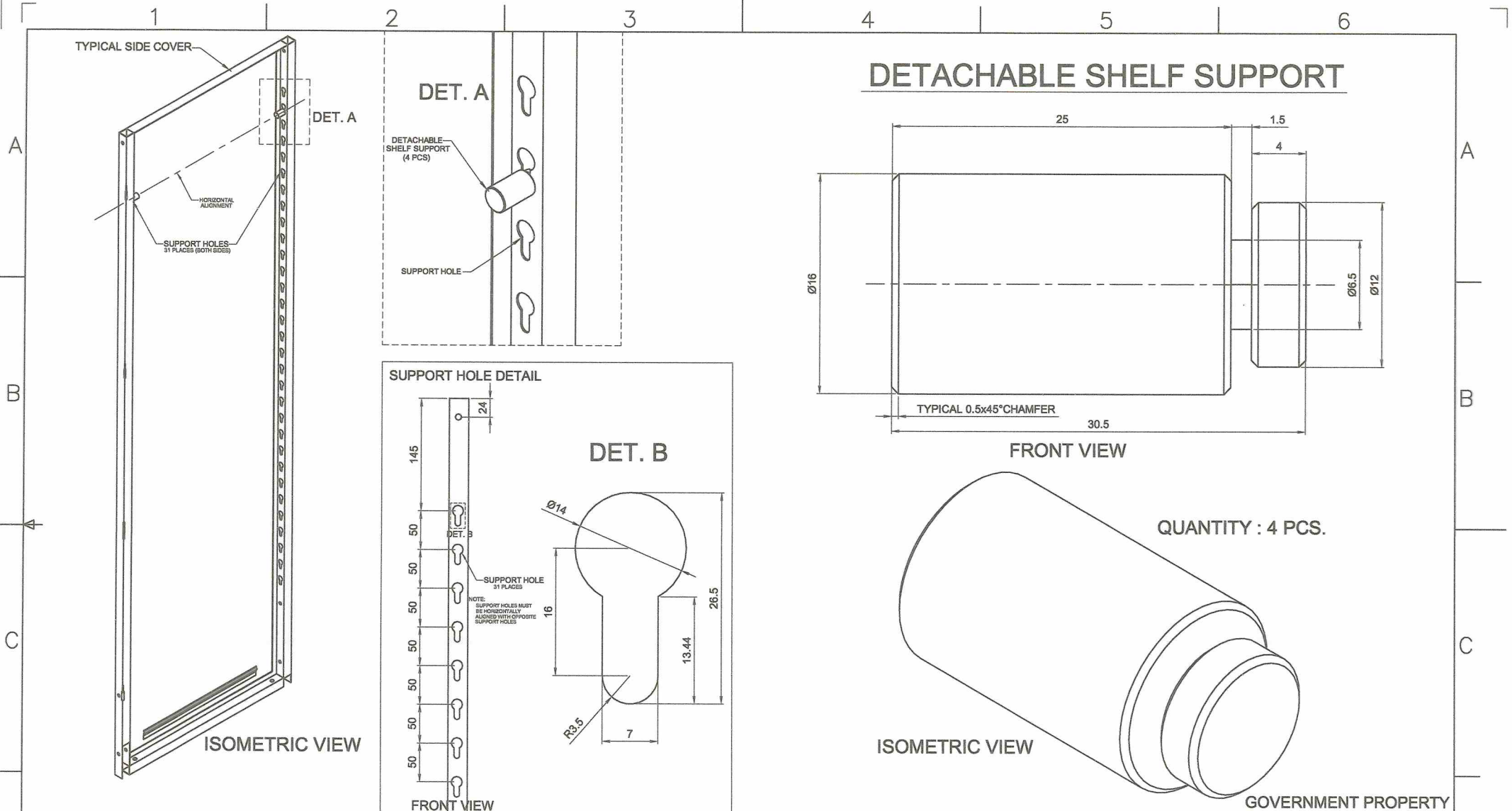


DepED-BLR

TOLERANCES FOR LENGTH GAUGING						
Grade of Accuracy	Nominal Size	0.5 to 3	Over 3 to 6	Over 6 to 30	Over 30 to 120	Over 120 to 400
Medium		± 0.10	± 0.10	± 0.20	± 0.30	± 0.50

TOLERANCES FOR RADIUS & CHAMFERS					
Grade of Accuracy	Nominal Size	0.5 to 3	Over 3 to 6	Over 6 to 30	Over 30 to 120
Smooth		± 0.20	± 0.50	± 1.00	± 2.00

SYM	REVISION	DATE	BY




DETACHABLE SHELF SUPPORT

NOTES:
 1. All dimensions are in millimeter unless otherwise specified
 2. Remove burrs and sharp edges.

TOLERANCES FOR LENGTH GAUGING						
Grade of Accuracy	Nominal Size	0.5 to 3	Over 3 to 6	Over 6 to 30	Over 30 to 120	Over 120 to 400
Medium		± 0.10	± 0.10	± 0.20	± 0.30	± 0.50

TOLERANCES FOR RADIUS & CHAMFERS						
Grade of Accuracy	Nominal Size	0.5 to 3	Over 3 to 6	Over 6 to 30	Over 30 to 120	
Smooth		± 0.20	± 0.50	± 1.00	± 2.00	
Medium						

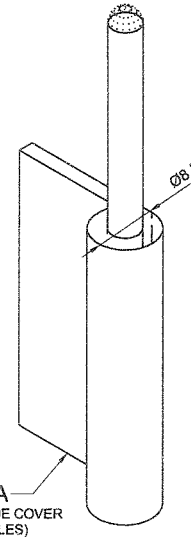
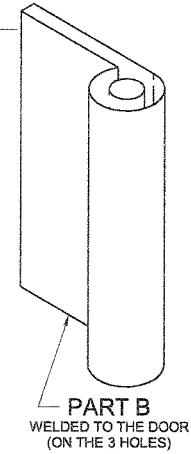
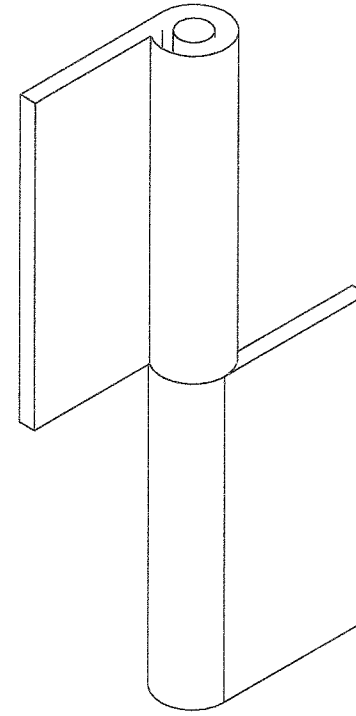
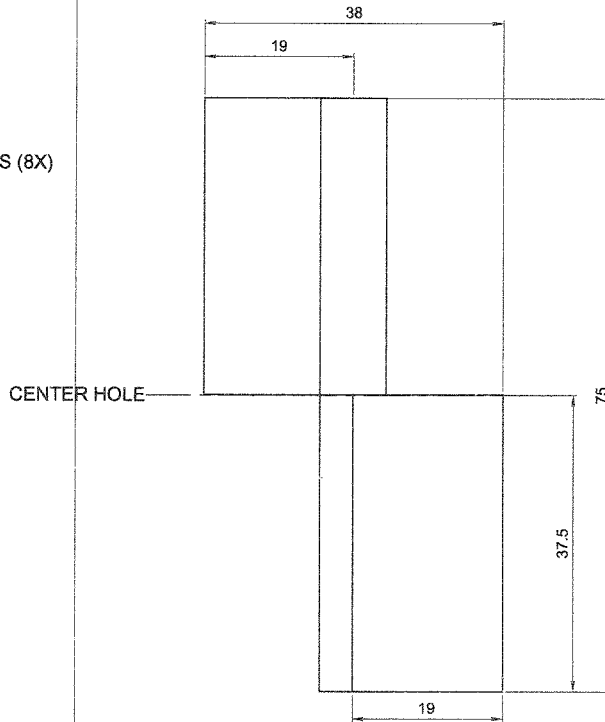
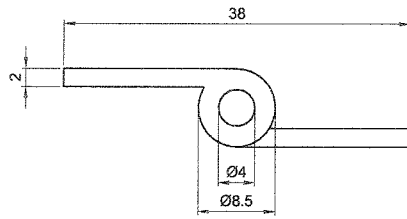
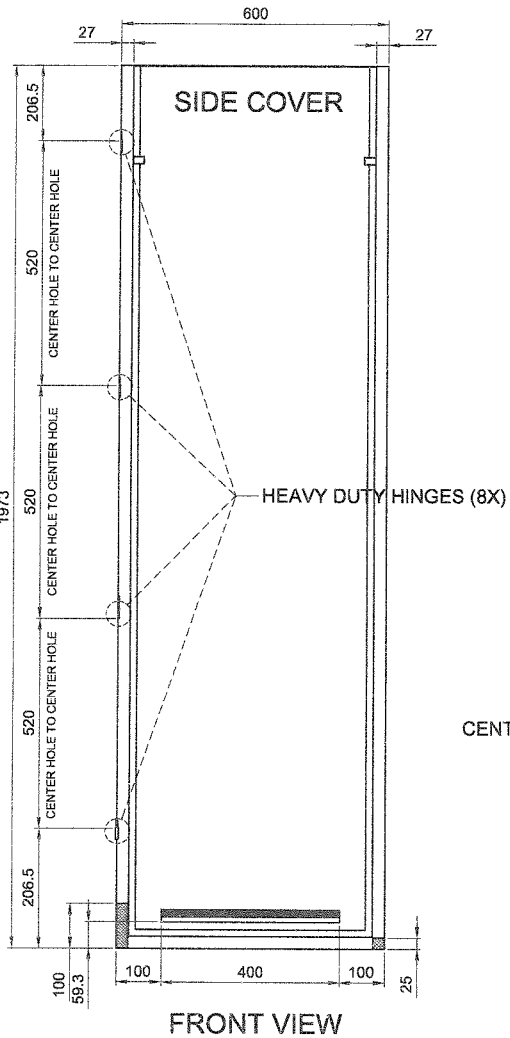
SYM	REVISION	DATE	BY

Date	JUNE 2016	Scale	(NTS)	STORAGE CABINET	
Conceptualized by					
Drawn by	BC Lisondra	Item Name	DETACHABLE SHELF SUPPORT	Sheet	13
Designed by	BC Lisondra	Material	Ø 16mm STAINLESS STEEL ROD	File name	cabinet
Recommended by	M. S. Maquilas	 DepED-BLR			
Approved by	R. C. La Rosa				

GOVERNMENT PROPERTY

HEAVY DUTY DETACHABLE HINGES DETAIL

MATERIAL : STAINLESS STEEL 304
 QUANTITY : 4pcs. RIGHT & 4pcs. LEFT HINGE



EXPLODED VIEW

GOVERNMENT PROPERTY

- NOTES:**
- All dimensions are in millimeter unless otherwise specified
 - Remove burrs and sharp edges.

TOLERANCES FOR LENGTH GAUGING						
Grade of Accuracy	Nominal Size	Over 0.5 to 3	Over 3 to 6	Over 6 to 30	Over 30 to 120	Over 120 to 400
Medium		± 0.10	± 0.10	± 0.20	± 0.30	± 0.50

TOLERANCES FOR RADIUS & CHAMFERS					
Grade of Accuracy	Nominal Size	Over 0.5 to 3	Over 3 to 6	Over 6 to 30	Over 30 to 120
Smooth		± 0.20	± 0.50	± 1.00	± 2.00
Medium					

SYM	REVISION	DATE	BY

Date	JUNE 2016	Scale	(NTS)
Conceptualized by			
Drawn by	BC Lisondra		
Designed by	Q.C. Checked by		
Recommended by	M.S. Maquilas		
Approved by	R. C. La Rosa		

STORAGE CABINET	
Item Name	DETACHABLE HINGE DETAIL
Material	2mm STAINLESS STEEL 304 PLATE
Sheet	14
File name	cabinet

DepED-BLR

