



DepEd Data Bits:

Public School Teachers SY 2020-2021

One of the Department's Mission is for teachers to facilitate learning and constantly nurture every learner. This fact sheet provides information and analysis on the data regarding public school teachers in the country

The overall number of public school teachers in all levels of basic education is **876,842**.

Here is the total count for each level.

514,099

in Elementary Schools (ES)

288,687

in Junior High Schools (JHS)

74,056

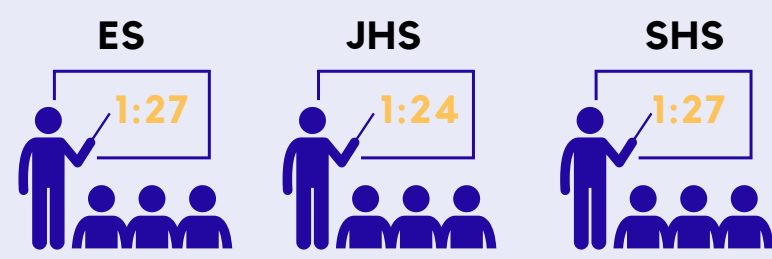
in Senior High Schools (SHS)

The total number of teachers by position title in all three levels is summarized below:

Instructors	43
Teachers	808,528
Master Teachers	59,972
SPED Teachers	4,882

REGIONAL DATA

Meanwhile, the national teacher to learner ratio is:



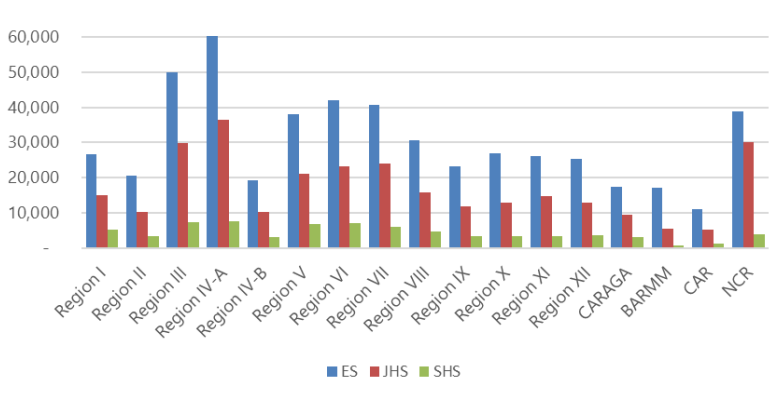
This is out of the 13,681,248 learners in ES; 7,043,981 in JHS and 1,987,180 in SHS.

For each region, the teacher to learner ratio is:

Region	ES	JHS	SHS
Region I	1:24	1:24	1:26
Region II	1:24	1:24	1:25
Region III	1:29	1:25	1:27
Region IV-A	1:30	1:26	1:27
Region IV-B	1:25	1:23	1:26
Region V	1:24	1:22	1:23
Region VI	1:25	1:26	1:28
Region VII	1:26	1:23	1:27
Region VIII	1:22	1:24	1:28
Region IX	1:24	1:26	1:26
Region X	1:27	1:25	1:27
Region XI	1:27	1:24	1:27
Region XII	1:27	1:26	1:27
Caraga	1:25	1:23	1:23
BARMM	1:33	1:28	1:52
CAR	1:20	1:20	1:26
NCR	1:32	1:23	1:28
National	1:26	1:24	1:26

In most regions, one teacher is assigned to 24-26 learners. One notable difference is BARRM wherein the number of SHS learners per teacher reached to 52. Less learners assigned to each teacher can be observed in CAR which only fell at 1:20 ratio in ES and JHS.

Regional Breakdown of the Number of Teachers per Level, SY 2020-2021

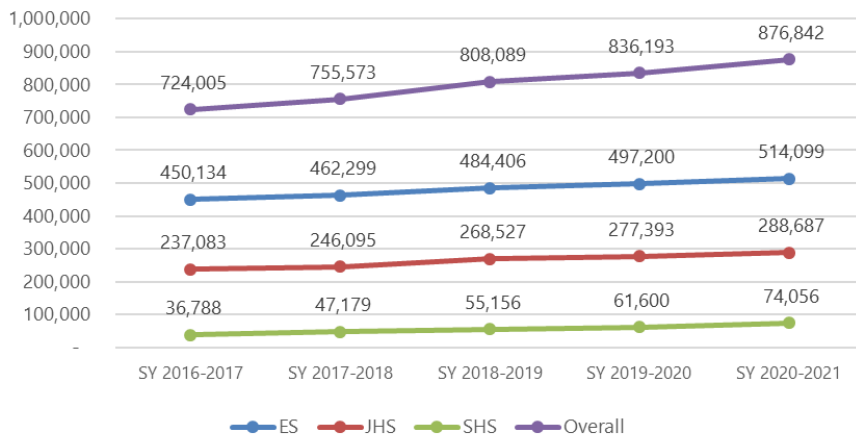


In the regional level, the distribution of teachers is larger in ES. On the average, Region IV-A has the most number of teachers, followed by Region III and NCR. Fewer teachers are in CAR, BARMM and Caraga.



Historical Number of Teachers (SY 2016-2017 to SY 2020-2021)

Number of Teachers in All Levels



There is a consistent increase in the number of teachers in all levels from SY 2016-2017 to SY 2020-2021.

The overall percentage increase from SY 2016-2017 compared to SY 2020-2021 is 21.1%. For each level, the percentage increase is 14.2% for ES, 21.8% for JHS, and 101.3% for SHS.

Historical Teacher-Learner Ratio per Region (SY 2016-2017 to SY 2020-2021)

Per level

Both ES and JHS have a decreasing trend which means that less learners are assigned to a teacher. The ratio for SHS also has an improving trend starting SY 2017-2018.

Number of learners for each



ES

JHS

SHS

SY 2016-2017



SY 2017-2018



SY 2018-2019



SY 2019-2020



SY 2020-2021



Combined ES, JHS and SHS

The figure below shows the combined regional ratio in all three levels from SY 2016-2017 to SY 2020-2021. The lowest ratio is experienced in CAR from SY 2016-2017 to SY 2017-2018 with 1:20 ratio. From SY 2018-2019 to SY 2020-2021, the lowest ratio is in Regions V and Caraga with 1:23 teacher-learner ratio.

Region	SY 2016-2017	SY 2017-2018	SY 2018-2019	SY 2019-2020	SY 2020-2021
Region I	1:24	1:24	1:26	1:26	1:26
Region II	1:24	1:24	1:25	1:25	1:25
Region III	1:29	1:25	1:27	1:27	1:27
Region IV-A	1:30	1:26	1:27	1:27	1:27
Region IV-B	1:25	1:23	1:26	1:26	1:26
Region V	1:24	1:22	1:23	1:23	1:23
Region VI	1:25	1:26	1:28	1:28	1:28
Region VII	1:26	1:23	1:27	1:27	1:27
Region VIII	1:22	1:24	1:28	1:28	1:28
Region IX	1:24	1:26	1:26	1:26	1:26
Region X	1:27	1:25	1:27	1:27	1:27
Region XI	1:27	1:24	1:27	1:27	1:27
Region XII	1:27	1:26	1:27	1:27	1:27
Caraga	1:25	1:23	1:23	1:23	1:23
BARMM	1:33	1:28	1:52	1:52	1:52
CAR	1:20	1:20	1:26	1:26	1:26
NCR	1:32	1:23	1:28	1:28	1:28
National	1:26	1:24	1:26	1:26	1:26

ACTION STEPS:



The Department hires more teachers yearly to provide more learning opportunities for children and to further reduce the teacher-learner ratio.

Along with this is DepEd's continuous promotion of teachers' welfare and provision of support through teacher benefits and allowances.



Scan the QR code to view this version of DepEd Data Bits.



Scan Me!

