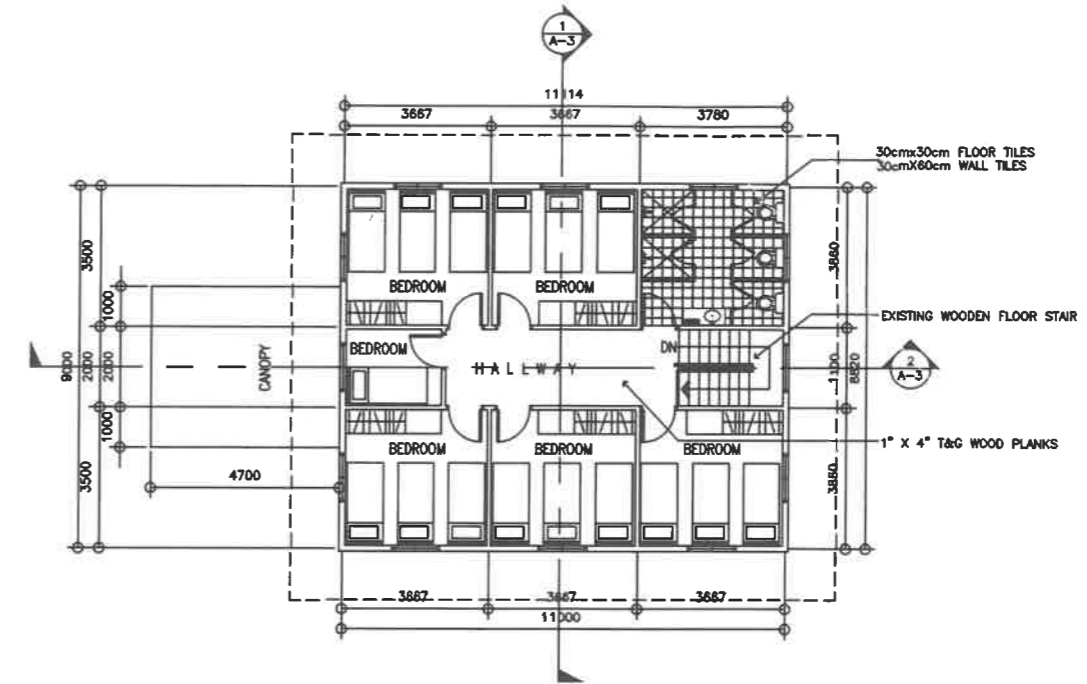


1
A-1

GROUND FLOOR PLAN

SCALE 1:200M



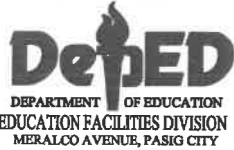
2
A-1

SECOND FLOOR PLAN

SCALE 1:200M

6

REPUBLIC OF THE PHILIPPINES



DRAWN BY :

Camille Raposa
CAMILLE ANN C. RAPOSA
ARCHITECT
EFD-DepED

CHECKED BY :

Kemery G. Rizaldo
KEMERY G. RIZALDO
ENGINEER 1, EFD
EFD-DepED

RECOMMENDING APPROVAL :

Eliseo B. Raymundo
ELISEO B. RAYMUNDO
CHIEF EDUCATION SUPERVISOR
OIC, CAMP SUPERINTENDENT, BTC

RECOMMENDING APPROVAL :

Annabelle R. Pangan
ANNABELLE R. PANGAN
CHIEF
OFFICE OF THE CHIEF, EFD-AS

APPROVED BY :

Alain Del B. Pascua
ALAIN DEL B. PASCUA
UNDERSECRETARY
FOR ADMINISTRATION

PROJECT TITLE :

REPAIR/REHABILITATION/RESTORATION
OF BACHELORS HALL

LOCATION :

PROJECT CODE :

OWNER :

DEPARTMENT OF EDUCATION
DepED

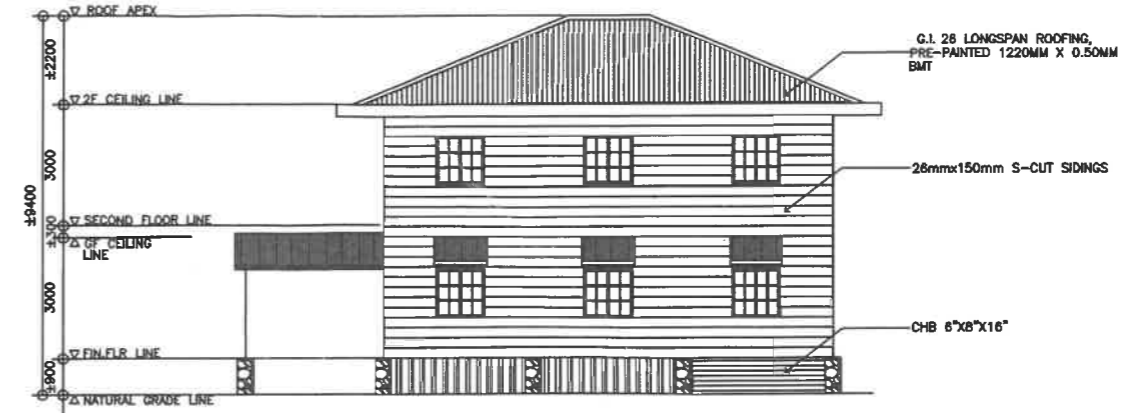
SHEET CONTENTS :
- FLOOR PLANS

SHEET NO:

A-1
4



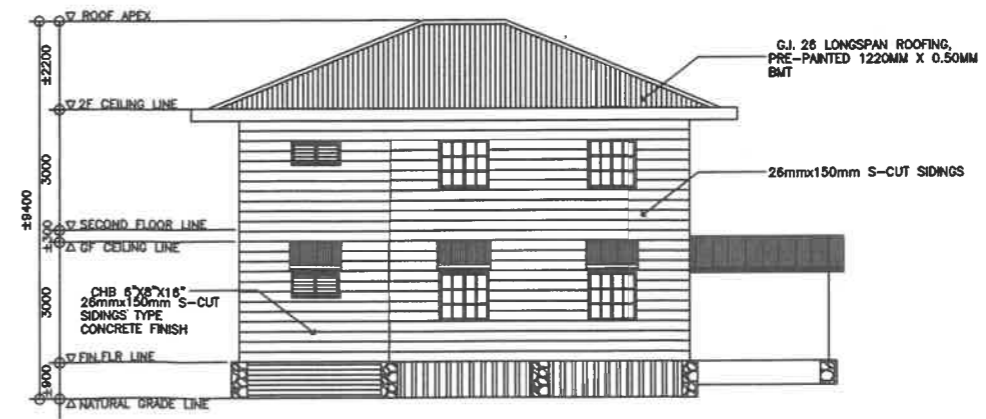
1 FRONT ELEVATION
A-2 SCALE 1:200M



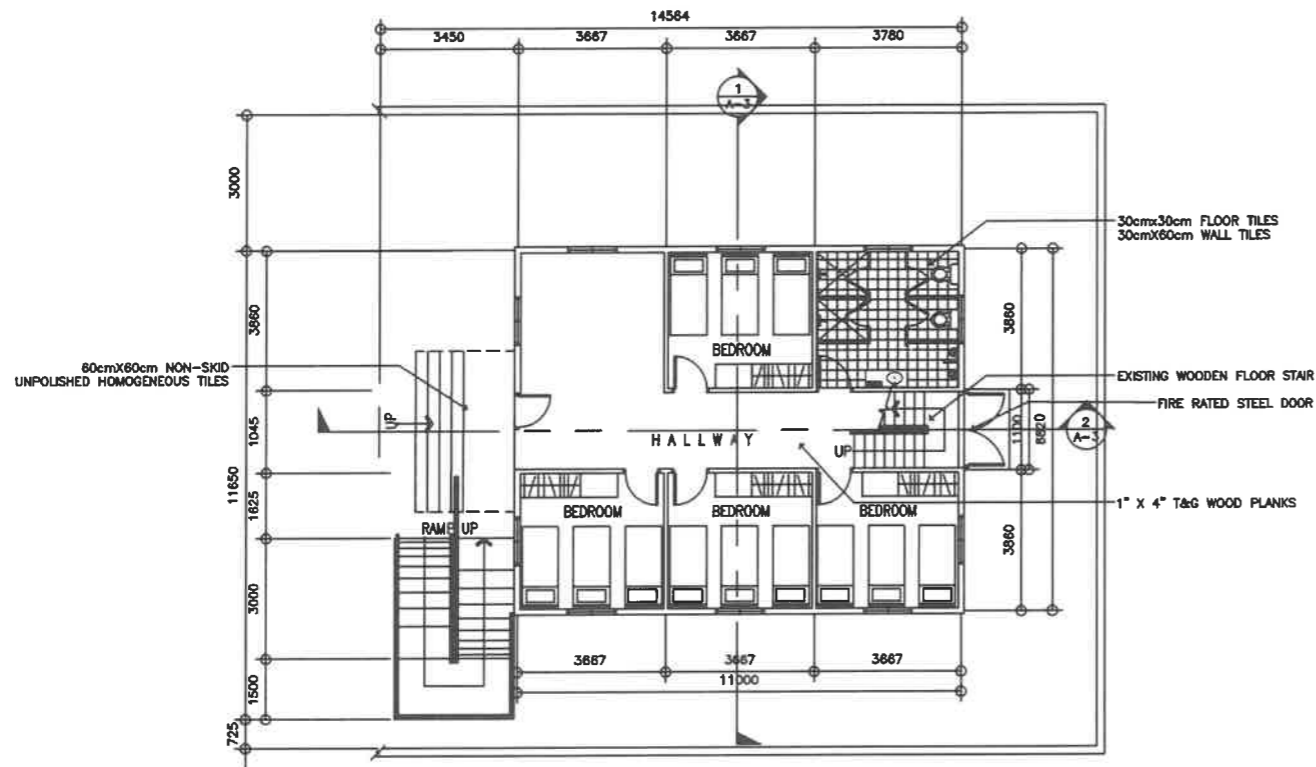
2 RIGHT SIDE ELEVATION
A-2 SCALE 1:200M



3 REAR ELEVATION
A-2 SCALE 1:200M



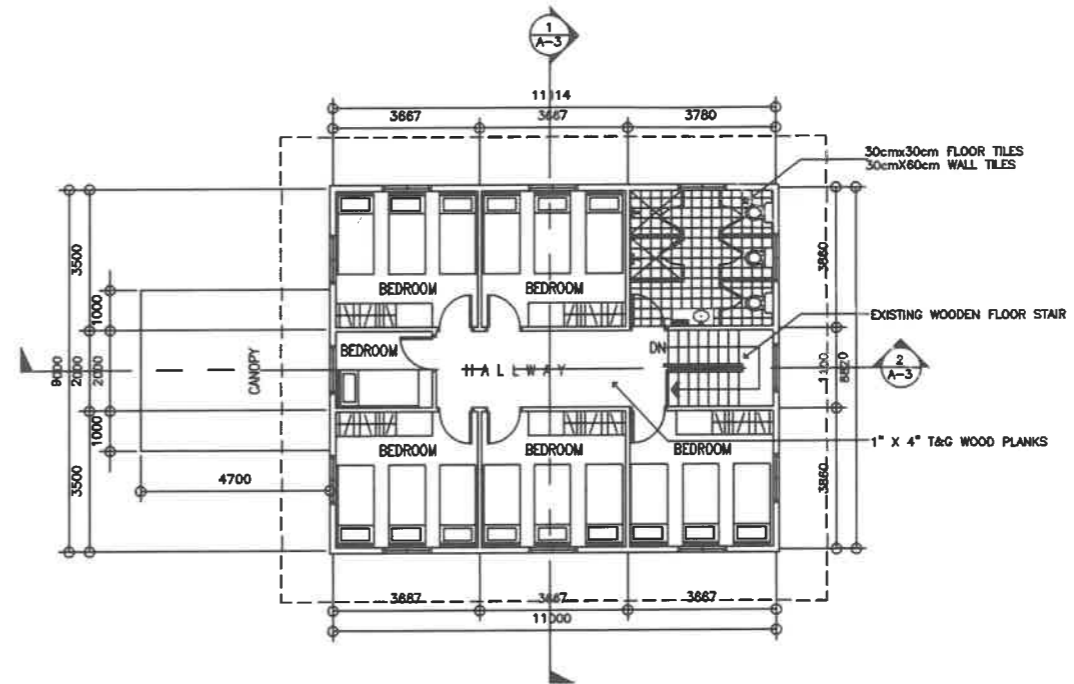
4 LEFT SIDE ELEVATION
A-2 SCALE 1:200M



1
A-1

GROUND FLOOR PLAN

SCALE 1:200M



2
A-1

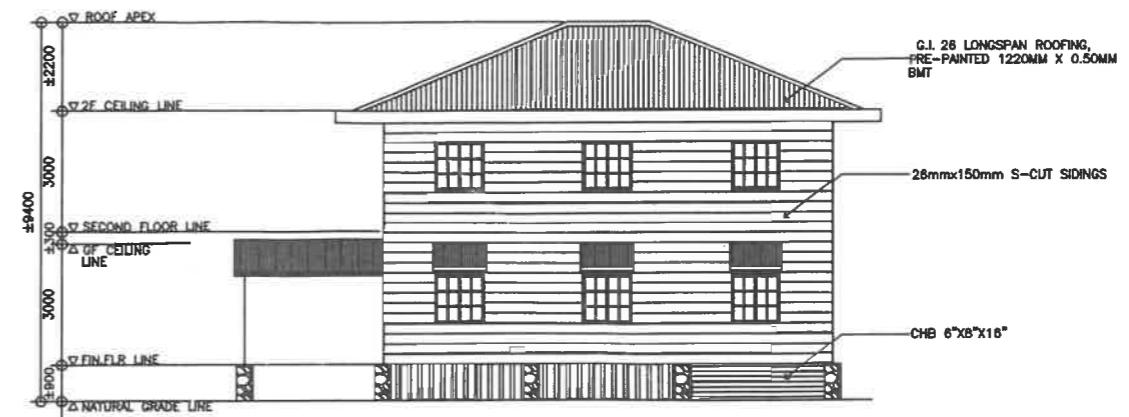
SECOND FLOOR PLAN

SCALE 1:200M

G



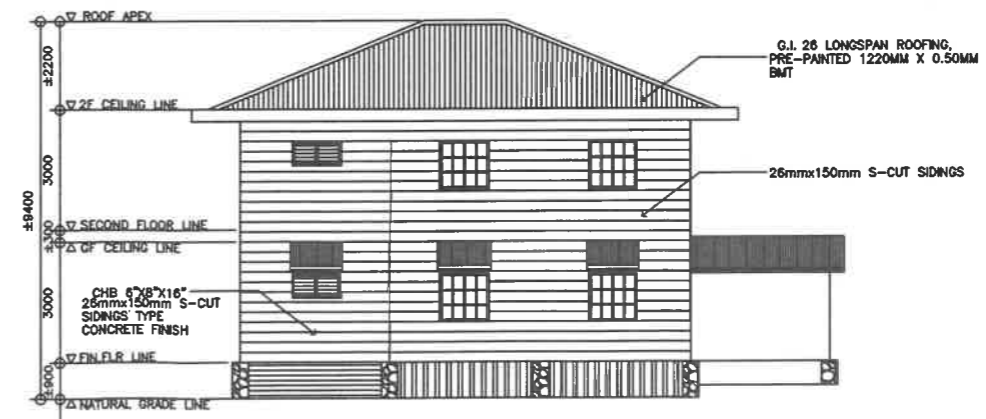
1 FRONT ELEVATION
 A-2 SCALE 1:200M



2 RIGHT SIDE ELEVATION
 A-2 SCALE 1:200M



3 REAR ELEVATION
 A-2 SCALE 1:200M



4 LEFT SIDE ELEVATION
 A-2 SCALE 1:200M

REPUBLIC OF THE PHILIPPINES



DRAWN BY :

Camillo Raposa
 CAMILLE ANN C. RAPOSA
 ARCHITECT
 EFD-DepED

CHECKED BY :

Kemery G. Rizaldo
 KEMERY G. RIZALDO
 ENGINEER 1, EFD
 EFD-DepED

RECOMMENDING APPROVAL :

Elised B. Raymundo
 ELISED B. RAYMONDO
 CHIEF EDUCATION SUPERVISOR
 OC, CAMP SUPERINTENDENT, ETC

RECOMMENDING APPROVAL :

Annabelle R. Pangan
 ANNABELLE R. PANGAN
 CHIEF
 OFFICE OF THE CHIEF, EFD-AS

APPROVED BY :

Alain Del B. Pascua
 ALAIN DEL B. PASCUA
 UNDERSECRETARY
 FOR ADMINISTRATION

PROJECT TITLE :

**REPAIR/REHABILITATION/RESTORATION
 OF BACHELORS HALL**

LOCATION :

PROJECT CODE :

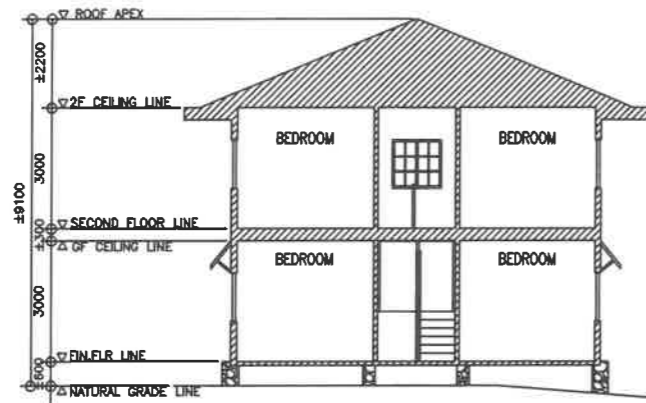
OWNER :

DEPARTMENT OF EDUCATION
 DepED

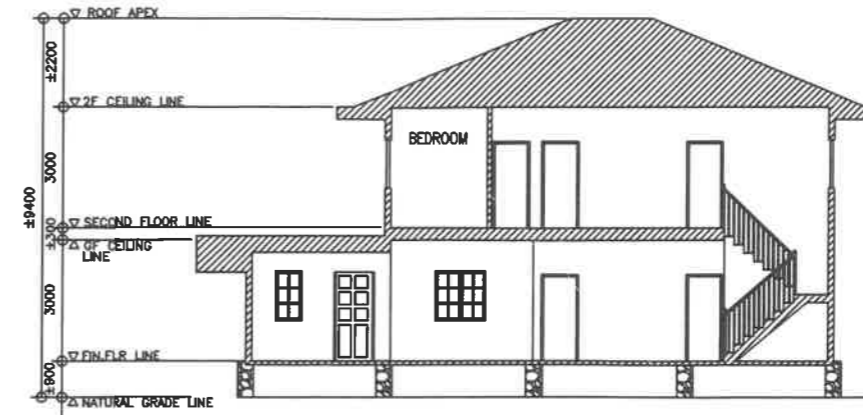
SHEET CONTENTS : - ELEVATIONS

SHEET NO.:

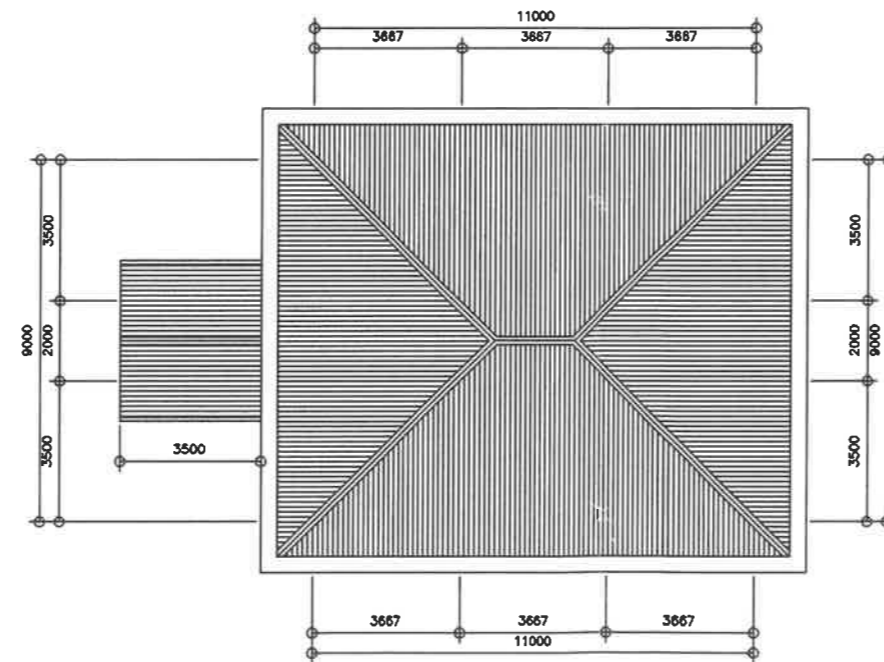
A-2
4



1 LONGITUDINAL SECTION
A-3 SCALE 1:200M

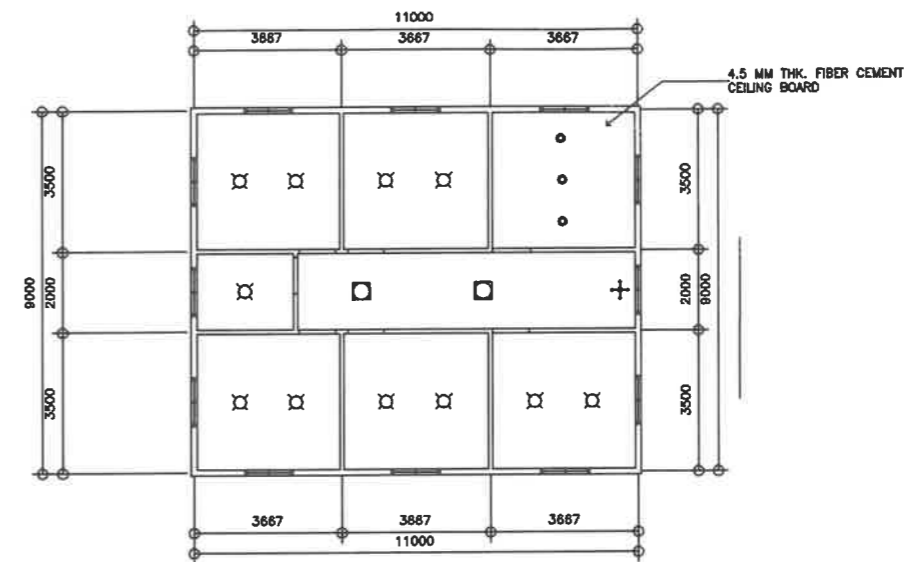
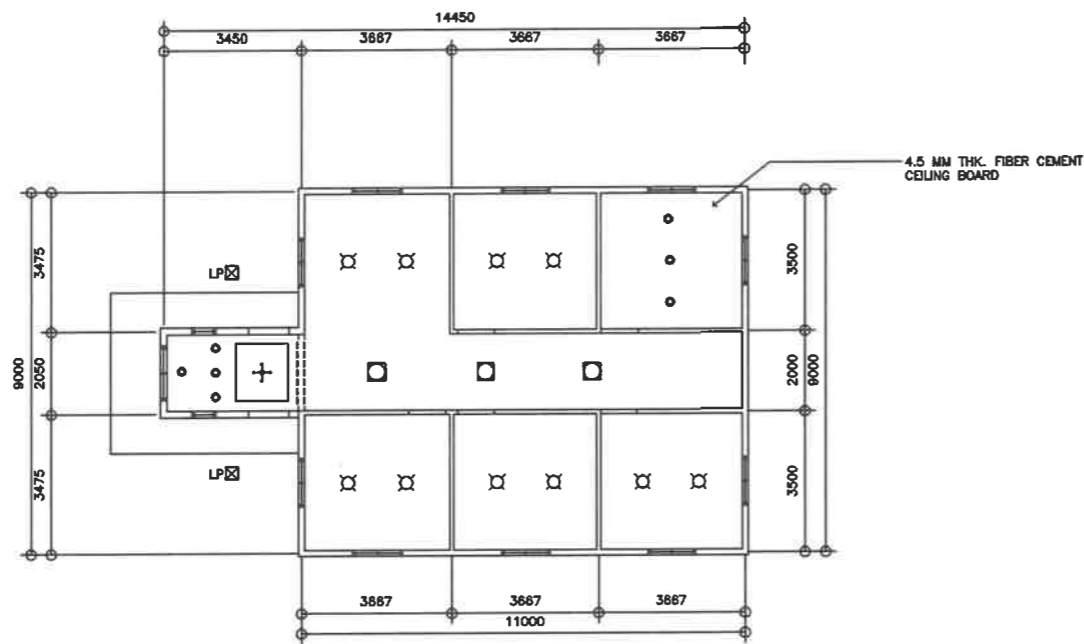


2 CROSS SECTION
A-3 SCALE 1:200M



3 ROOF PLAN
A-3 SCALE 1:200M

REPUBLIC OF THE PHILIPPINES DEPARTMENT OF EDUCATION EDUCATION FACILITIES DIVISION MERALCO AVENUE, PASIG CITY	DRAWN BY : CAMILLE ANN C. RAPOSA ARCHITECT EFD-DepED	CHECKED BY : KEMERY G. RIZALDO ENGINEER 1, EFD EFD-DepED	RECOMMENDING APPROVAL : ELISED B. RAYMUNDO CHIEF EDUCATION SUPERVISOR OC, CAMP SUPERINTENDENT, ETC	RECOMMENDING APPROVAL : ANNABELLE R. PANGAN CHIEF OFFICE OF THE CHIEF, EFD-AS	APPROVED BY : ALAIN DEL B. PASCUA UNDERSECRETARY FOR ADMINISTRATION	PROJECT TITLE : REPAIR/REHABILITATION/RESTORATION OF BACHELORS HALL LOCATION :	PROJECT CODE: OWNER : DEPARTMENT OF EDUCATION DepED SHEET CONTENTS : - SECTIONS - ROOF PLAN	SHEET NO.: A-3 4



NOTE:
FOR ROOF EAVES USE
250MM X 3028 MM WOODGRAINED
PVC CEILING PANEL

1 GROUND FLOOR REFLECTED CEILING PLAN
A-4 SCALE 1:200M

2 SECOND FLOOR REFLECTED CEILING PLAN
A-4 SCALE 1:200M

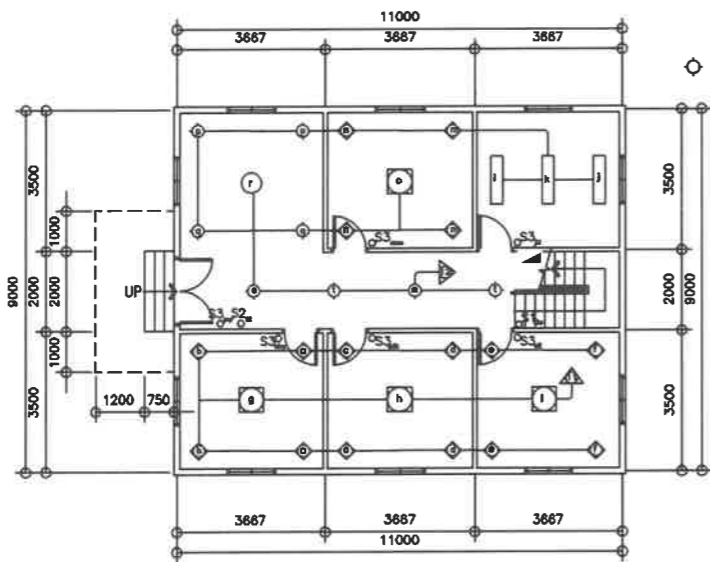
REPUBLIC OF THE PHILIPPINES DEPARTMENT OF EDUCATION EDUCATION FACILITIES DIVISION MERALCO AVENUE, PASIG CITY	DRAWN BY : CAMILLE ANN C. RAPOSA ARCHITECT EFD-DepED	CHECKED BY : KEMERY G. RIZALDO ENGINEER 1, EFD EFD-DepED	RECOMMENDING APPROVAL : ELISED B. RAYMUNDO CHIEF EDUCATION SUPERVISOR OIC, CAMP SUPERINTENDENT, BTC	RECOMMENDING APPROVAL : ANNABELLE R. PANGAN CHIEF OFFICE OF THE CHIEF, EFD-AS	APPROVED BY : ALAIN DEL B. PASCUA UNDERSECRETARY FOR ADMINISTRATION	PROJECT TITLE : REPAIR/REHABILITATION/RESTORATION OF BACHELORS HALL LOCATION :	PROJECT CODE :	OWNER : DEPARTMENT OF EDUCATION DepED SHEET CONTENTS : REFLECTED CEILING PLANS	SHEET NO.: A-4 4

CIRCUIT NO.	LOAD DESCRIPTION	SWITCHES			NO. OF OUTLET	WATTS	VOLTS	AMPS	PROTECTION PER CIRCUIT	SIZE OF CONDUCTOR	SIZE OF CONDUIT
		1P	2P	3P							
1	8 CONVENIENCE OUTLET				8	1440	230	6.2608	20 A	2 - 3.5 mm ² + 1 - 3.5 mm ² (G)	20 mm Ø
2	6 CONVENIENCE OUTLET				6	1080	230	4.6956	20 A	2 - 3.5 mm ² + 1 - 3.5 mm ² (G)	20 mm Ø
3	8 CONVENIENCE OUTLET				8	1440	230	6.2608	20 A	2 - 3.5 mm ² + 1 - 3.5 mm ² (G)	20 mm Ø
4	3500 WATTS SHOWER HEATER				1	3500	230	15.2174	30 A	2 - 3.5 mm ² + 1 - 5.5 mm ² (G)	25 mm Ø
5	3500 WATTS SHOWER HEATER				1	3500	230	15.2174	30 A	2 - 3.5 mm ² + 1 - 5.5 mm ² (G)	25 mm Ø
6	8 CONVENIENCE OUTLET				8	1440	230	6.2608	20 A	2 - 3.5 mm ² + 1 - 3.5 mm ² (G)	20 mm Ø
7	8 CONVENIENCE OUTLET				8	1440	230	6.2608	20 A	2 - 3.5 mm ² + 1 - 3.5 mm ² (G)	20 mm Ø
8	8 CONVENIENCE OUTLET				8	1440	230	6.2608	20 A	2 - 3.5 mm ² + 1 - 3.5 mm ² (G)	20 mm Ø
9	3500 WATTS SHOWER HEATER				1	3500	230	15.2174	30 A	2 - 3.5 mm ² + 1 - 5.5 mm ² (G)	25 mm Ø
10	3500 WATTS SHOWER HEATER				1	3500	230	15.2174	30 A	2 - 3.5 mm ² + 1 - 5.5 mm ² (G)	25 mm Ø
11	12 - 1W LED PANEL LIGHT 3 - 4W LED PANEL LIGHT				3	360	230	1.5652	20 A	2 - 3.5 mm ² + 1 - 3.5 mm ² (G)	20 mm Ø
12	3 - 4W PANEL LIGHT, 4 - 1LED 1W PANEL 1 - 8W CHANNELED, 1 - 8W LED PANEL LIGHT				2	420	230	1.8260	20 A	2 - 3.5 mm ² + 1 - 3.5 mm ² (G)	20 mm Ø
13	12 - 1W LED PANEL LIGHT 3 - 4W LED PANEL LIGHT				3	360	230	1.5652	20 A	2 - 3.5 mm ² + 1 - 3.5 mm ² (G)	20 mm Ø
14	4 - 4W PANEL LIGHT, 3 - 1LED 1W PANEL 2 - 1W LED PANEL LIGHT, 1 - 8W LED PANEL LIGHT				4	420	230	1.8260	20 A	2 - 3.5 mm ² + 1 - 3.5 mm ² (G)	20 mm Ø
15	SPARE										
16	SPARE										
	TOTAL					23840					

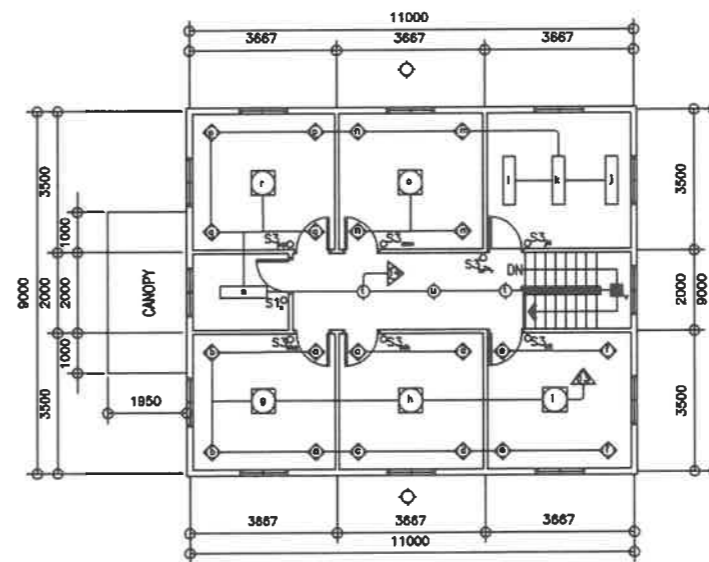
TOTAL CONNECTED LOADS = 23,840 VA
TOTAL DEMAND LOAD = 17,880 VA @ 75% DF
TOTAL CURRENT = 97.1739 AMPS

use 2-22.0 sq mm THHN Copper wire, 8.0 sq mm THW Ground Wire
in 60 mm diameter conduit
main circuit breaker : 100 AT

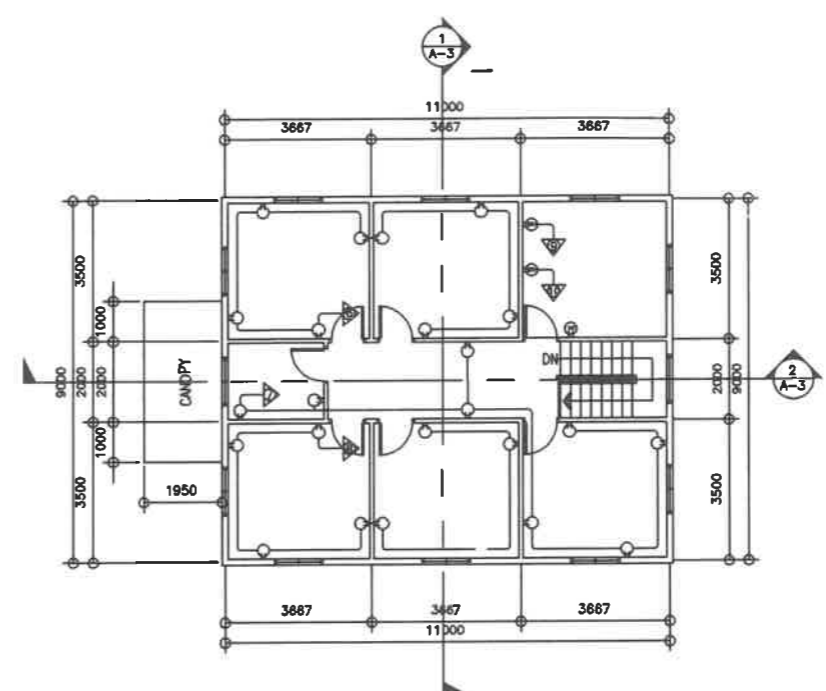
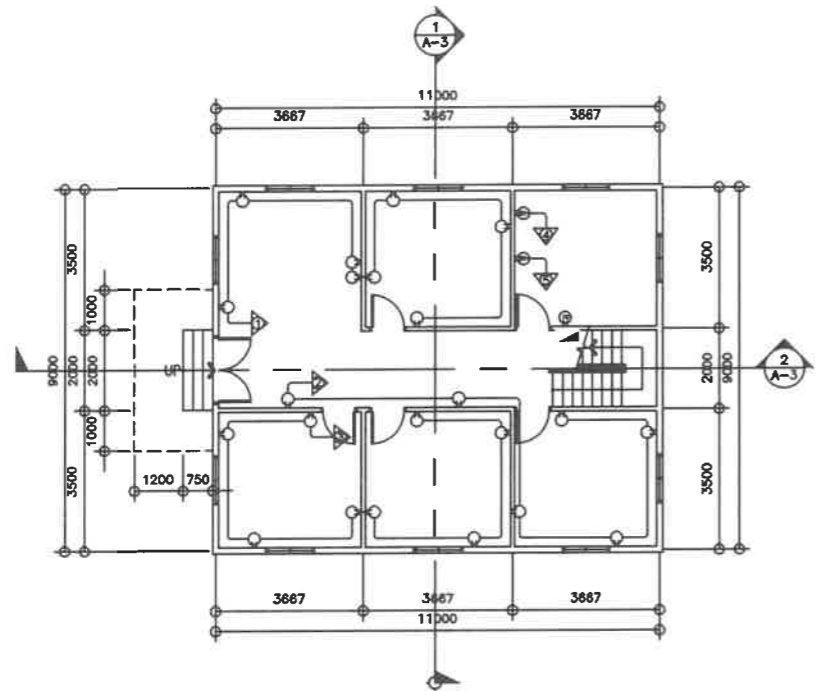
5 LOAD SCHEDULE
E-5



1 GROUND FLOOR LIGHTING LAYOUT
E-1 SCALE 1:100M



2 SECOND FLOOR LIGHTING LAYOUT
E-1 SCALE 1:200M



1
E-2

GROUND FLOOR POWER LAYOUT

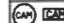

SCALE 1:200M

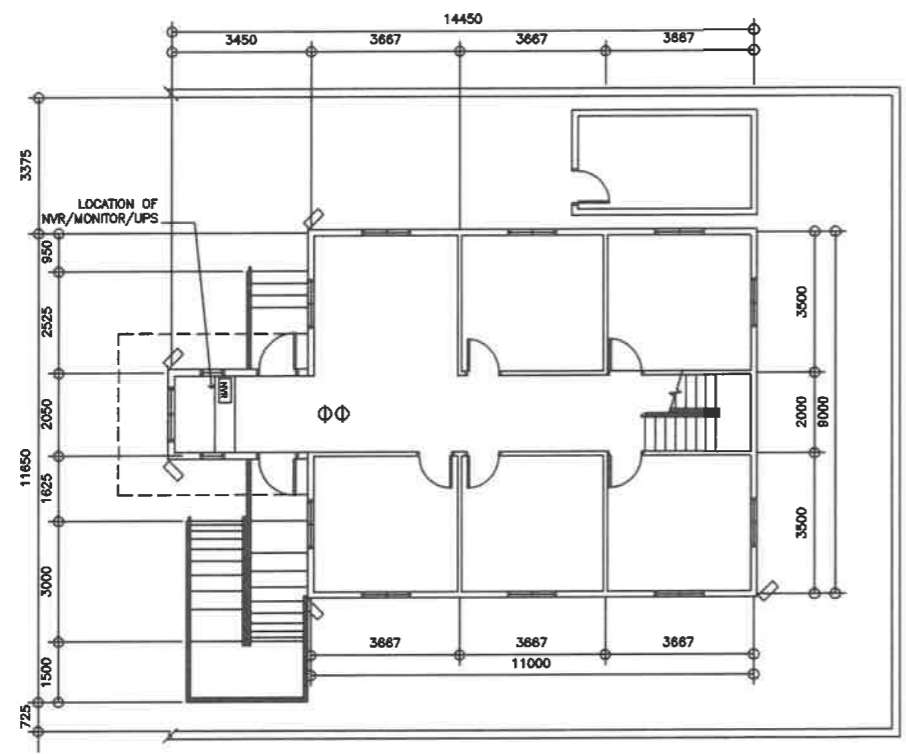
2
E-2

SECOND FLOOR POWER LAYOUT

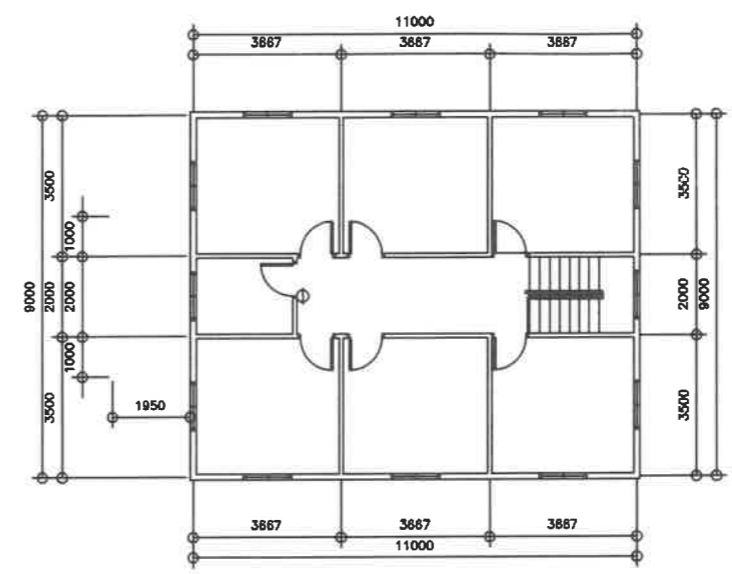
SCALE 1:200M

<p>REPUBLIC OF THE PHILIPPINES DEPARTMENT OF EDUCATION EDUCATION FACILITIES DIVISION MERALCO AVENUE, PASIG CITY</p>	DRAWN BY : CAMILLE ANN C. RAPOSA ARCHITECT EFD-DepED	CHECKED BY : FELIX P. MACARANDAN PROFESSIONAL ELECTRICAL ENGINEER EFD-DepED	RECOMMENDING APPROVAL : ELUSE B. RAYMUNDO CHIEF EDUCATION SUPERVISOR OIG, CAMP SUPERINTENDENT, BTC	RECOMMENDING APPROVAL : ANNABELLE R. PANGAN CHIEF OFFICE OF THE CHIEF, EFD-AS	APPROVED BY : ALAIN DEL B. PASCUA UNDERSECRETARY FOR ADMINISTRATION	PROJECT TITLE : REPAIR/REHABILITATION/RESTORATION OF BACHELORS HALL LOCATION :	PROJECT CODE :	OWNER : DEPARTMENT OF EDUCATION DepED SHEET CONTENTS : - POWER LAYOUTS	SHEET NO : <div style="border: 1px solid black; border-radius: 50%; width: 40px; height: 40px; display: flex; align-items: center; justify-content: center; margin: 0 auto;"> E-2 4 </div>


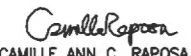




LEGEND	
	BULLET/DOME TYPE CAMERA
	NETWORK VIDEO RECORDER



1 GROUND FLOOR CCTV LAYOUT
E-3 SCALE 1:200M

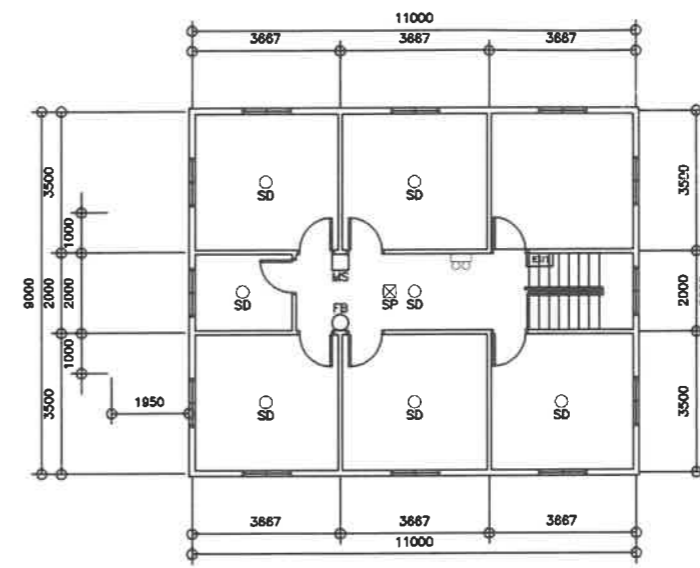
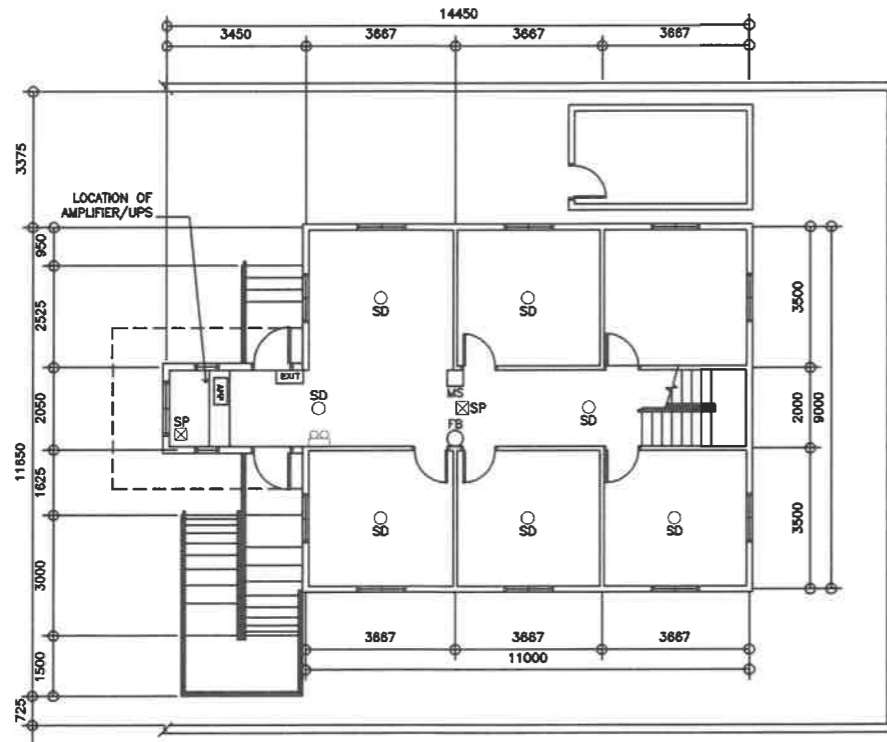


2 SECOND FLOOR CCTV LAYOUT
E-3 SCALE 1:200M

 <p>REPUBLIC OF THE PHILIPPINES DEPARTMENT OF EDUCATION EDUCATION FACILITIES DIVISION MERALCO AVENUE, PASIG CITY</p>	DRAWN BY :  CAMILLE ANN C. RAPOSA ARCHITECT EFD-DepED	CHECKED BY :  FELIX P. MACARANDAN PROFESSIONAL ELECTRICAL ENGINEER EFD-DepED	RECOMMENDING APPROVAL :  ELISEO B. RAYMUNDO CHIEF EDUCATION SUPERVISOR OIC, CAMP SUPERINTENDENT, BTC	RECOMMENDING APPROVAL :  ANNABELLE R. PANGAN CHIEF OFFICE OF THE CHIEF, EFD-AS	APPROVED BY :  ALAIN DEL B. PASCUA UNDERSECRETARY FOR ADMINISTRATION	PROJECT TITLE : REPAIR/REHABILITATION/RESTORATION OF BACHELORS HALL LOCATION :	PROJECT CODE :	OWNER : DEPARTMENT OF EDUCATION DepED SHEET CONTENTS : - CCTV LAYOUTS	SHEET NO : E-3 4
---	--	---	---	---	---	--	----------------	--	--------------------------------------

LEGEND	
○SD	SMOKE DETECTOR
⊗SP	SPEAKER
⊞	EMERGENCY LIGHT
□MS	MANUAL STATION
○FB	FIRE ALARM BELL

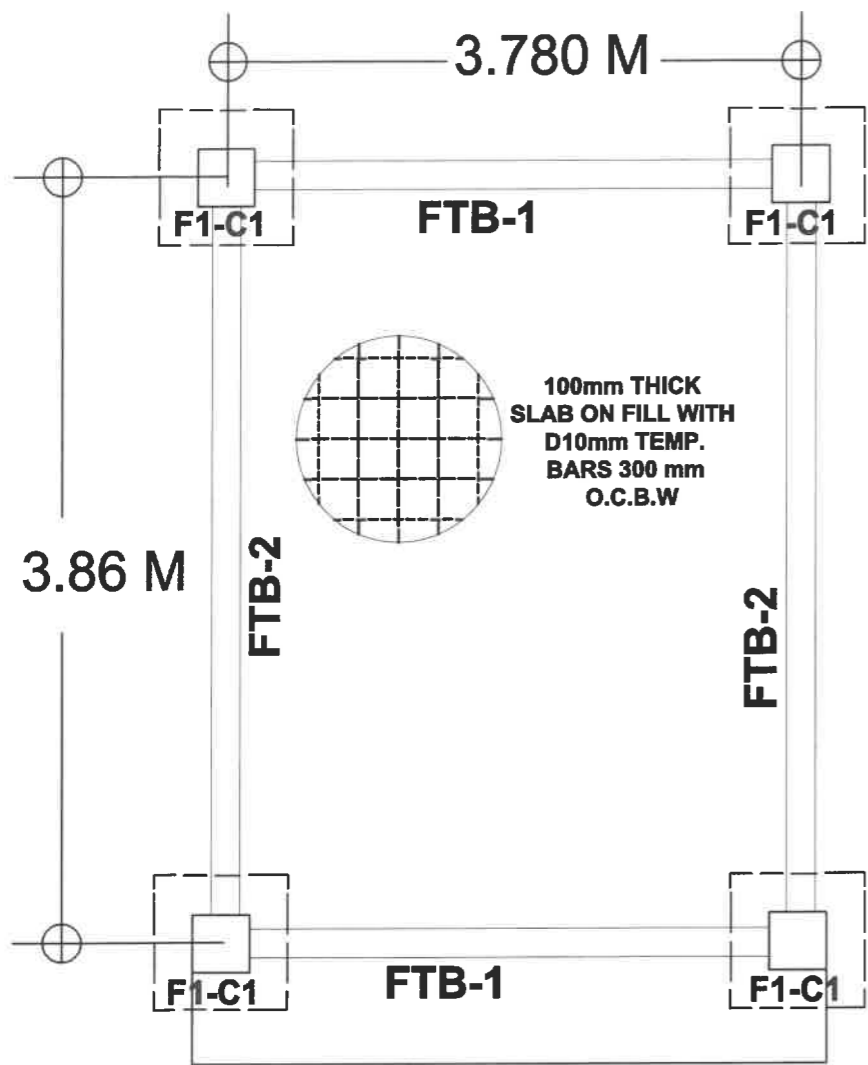
- AMP AMPLIFIER
- FACP FIRE ALARM CONTROL PANEL
- EXIT EXIT SIGNAGE
- ⊞ 2-BEAM EMERGENCY LIGHT



1 GROUND FLOOR AUDIO/FIRE LAYOUT
E-4 SCALE 1:200M

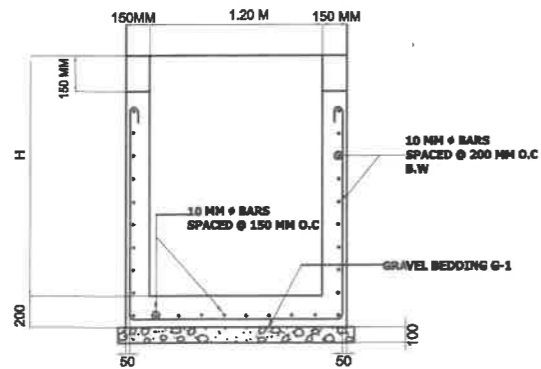
2 SECOND FLOOR AUDIO/FIRE LAYOUT
E-4 SCALE 1:200M

 DEPARTMENT OF EDUCATION EDUCATION FACILITIES DIVISION MERALCO AVENUE, PASIG CITY	DRAWN BY : CAMILLE ANN C. RAPOSA ARCHITECT EFD-DepED	CHECKED BY : FELIX P. MACARANDAN PROFESSIONAL ELECTRICAL ENGINEER EFD-DepED	RECOMMENDING APPROVAL : ELISEO B. RAYMUNDO CHIEF EDUCATION SUPERVISOR OIC, CAMP SUPERINTENDENT, BTC	RECOMMENDING APPROVAL : ANNABELLE R. PANGAN CHIEF OFFICE OF THE CHIEF, EFD-AS	APPROVED BY : ALAIN DEL B. PASCUA UNDERSECRETARY FOR ADMINISTRATION	PROJECT TITLE : REPAIR/REHABILITATION/RESTORATION OF BACHELORS HALL	PROJECT CODE :	OWNER : DEPARTMENT OF EDUCATION DepED	SHEET NO. : E-4 4
	SHEET CONTENTS : - AUDIO/FIRE LAYOUTS						LOCATION :		

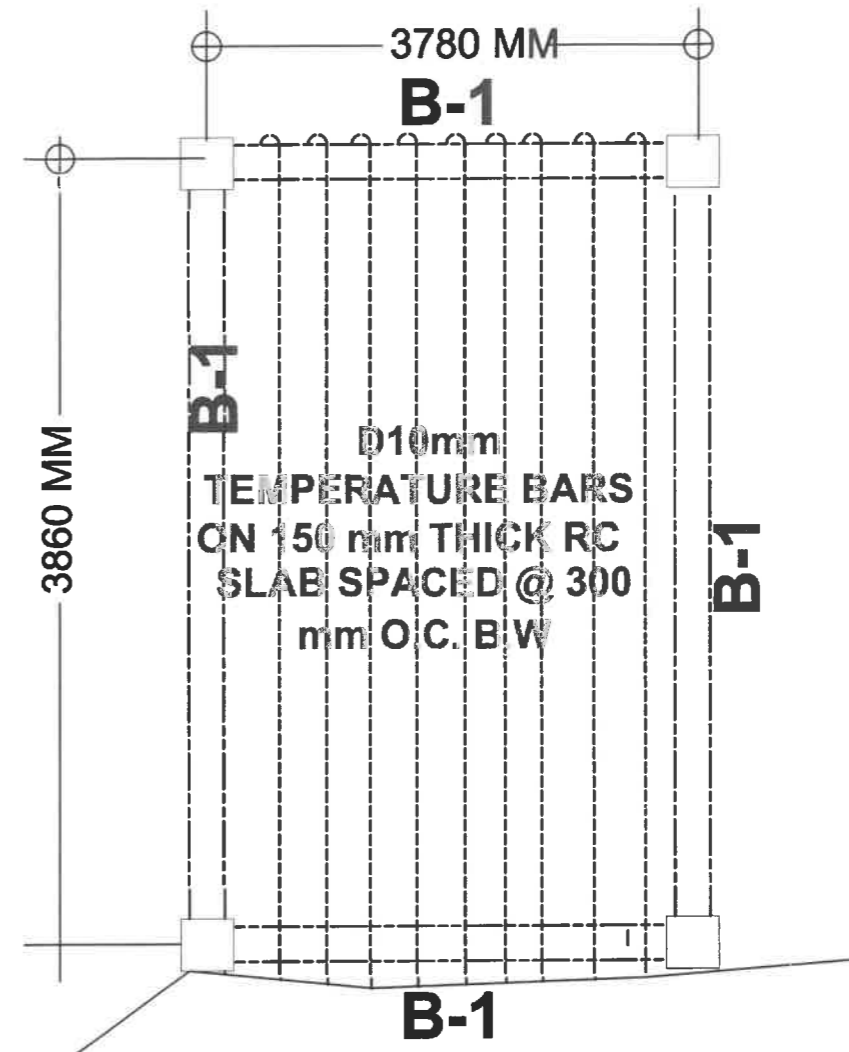


1 FOUNDATION PLAN

S 1 DRAWN NOT TO SCALE

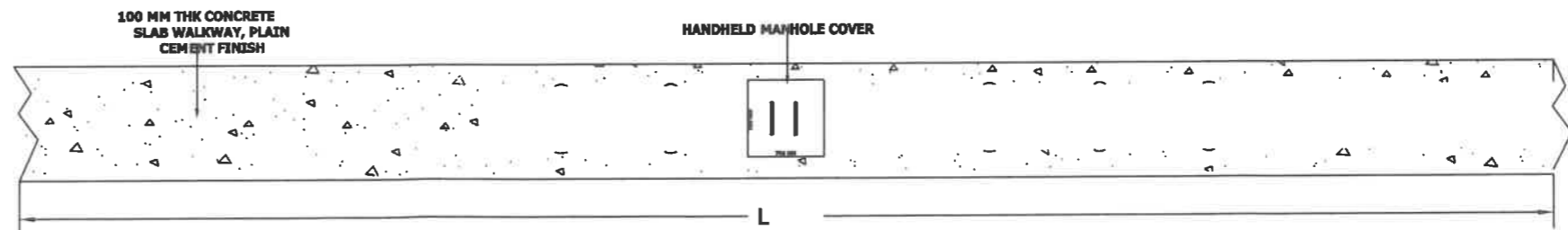


NOTE: NEW DRAINAGE TO BE CONSTRUCTED IS LOCATED AT LEFT SIDE, RIGHT SIDE AND REAR OF BACHELOR'S HALL BUILDING



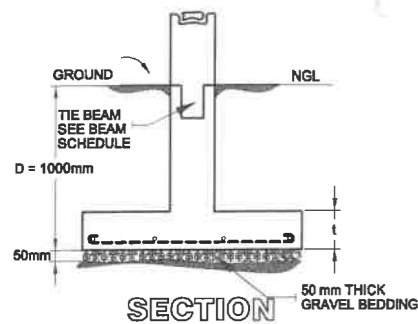
2 SECOND FLOOR COMFORT ROOM SLAB DETAIL

S 2 DRAWN NOT TO SCALE

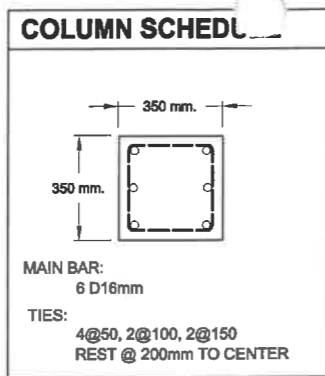


1 LINE CANAL TOP VIEW

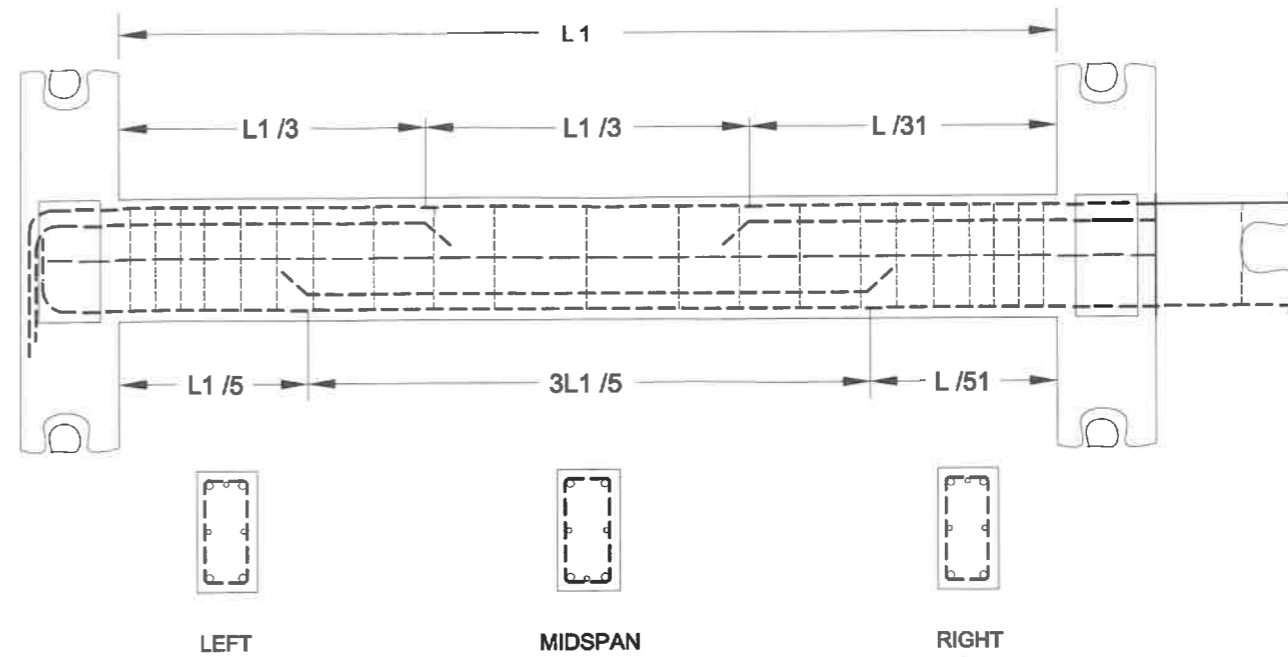
D1 SECTION
DRAWN NOT TO SCALE



PLAN

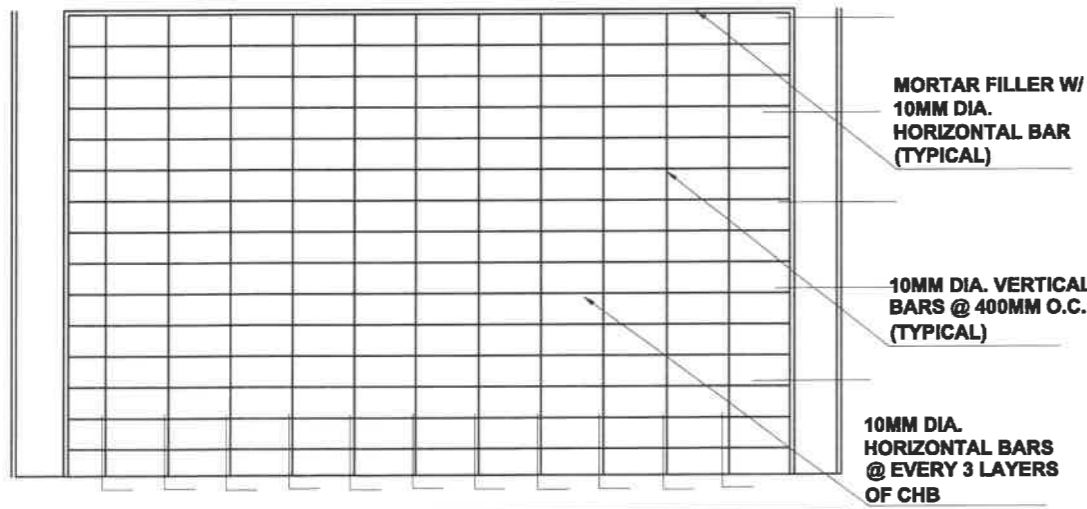


2 COLUMN DETAIL
S1 DRAWN



1 FOOTING DETAIL
S1 DRAWN

FOOTING SCHEDULE							
FOOTING MARK	FOOTING DIMENSIONS (mm)				REINFORCEMENT		REMARKS
	LENGTH (L)	WIDTH (W)	thickness (t)	DEPTH (D)	BAR X	BAR Y	
F-1	1200	1200	300	1000	4 - D16mm	4 - D16mm	SQUARE FOOTING



1 TYPICAL MASONRY ELEVATION
S3 DRAWN NOT TO SCALE

BEAM MARK	BEAM DIMENSIONS		STEEL REINFORCEMENT						STIRRUPS D10 mm (UNLESS NOTED OTHERWISE)	
	WIDTH (b,mm)	DEPTH (h,mm)	REBAR DIAMETER (mm)	LEFT		MIDSPAN		RIGHT		
				TOP	BOTT.	TOP	BOTT.	TOP		BOTT.
B1	200	300	16	3	3	3	3	3	3	3@50, 4@100, 4@150 REST @200 TO CENTER
TB	200	300	16	3	3	3	3	3	3	

1 GROUND FLOOR COMFORT ROOM STRUCTURAL DETAILS
S-1 SCALE 1:200M