

DISTRICT / CITY / MUNICIPALITY

LAND USE AND ZONING

LINE AND GRADE

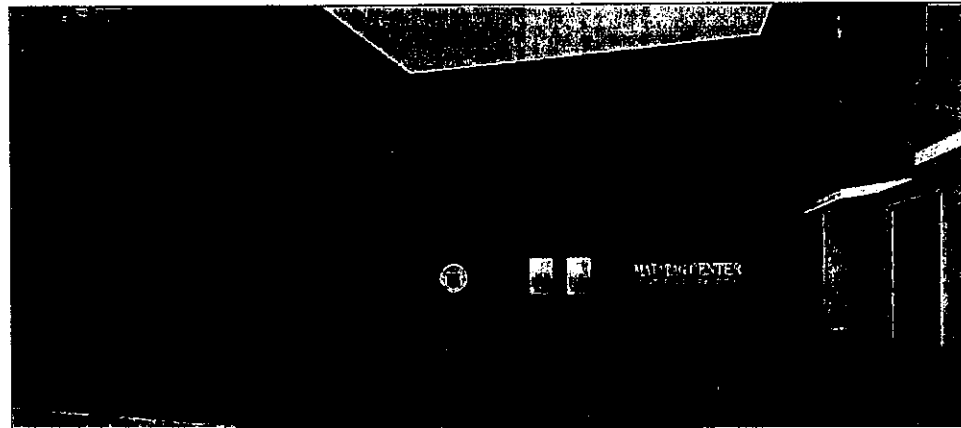
ARCHITECTURAL

STRUCTURAL

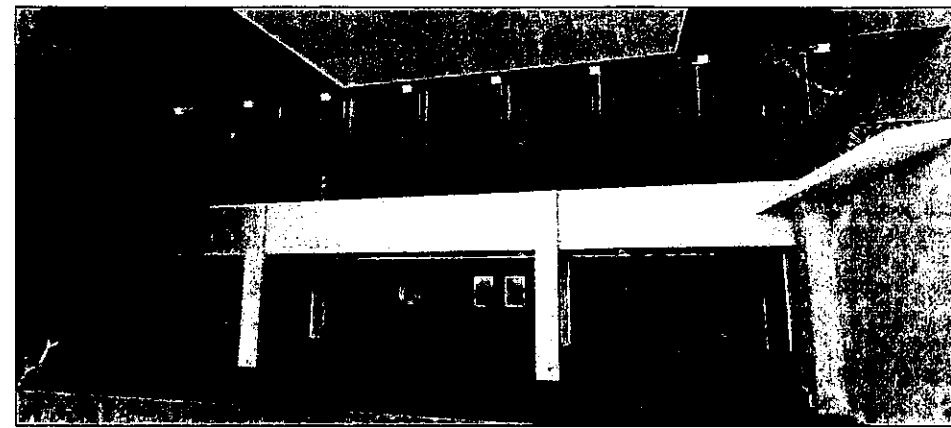
SANITARY

ELECTRICAL

ELECTRONICS



1  
A-2 SCALE NTS  
DEPED COMMAND CENTER  
EXTERIOR PERSPECTIVE

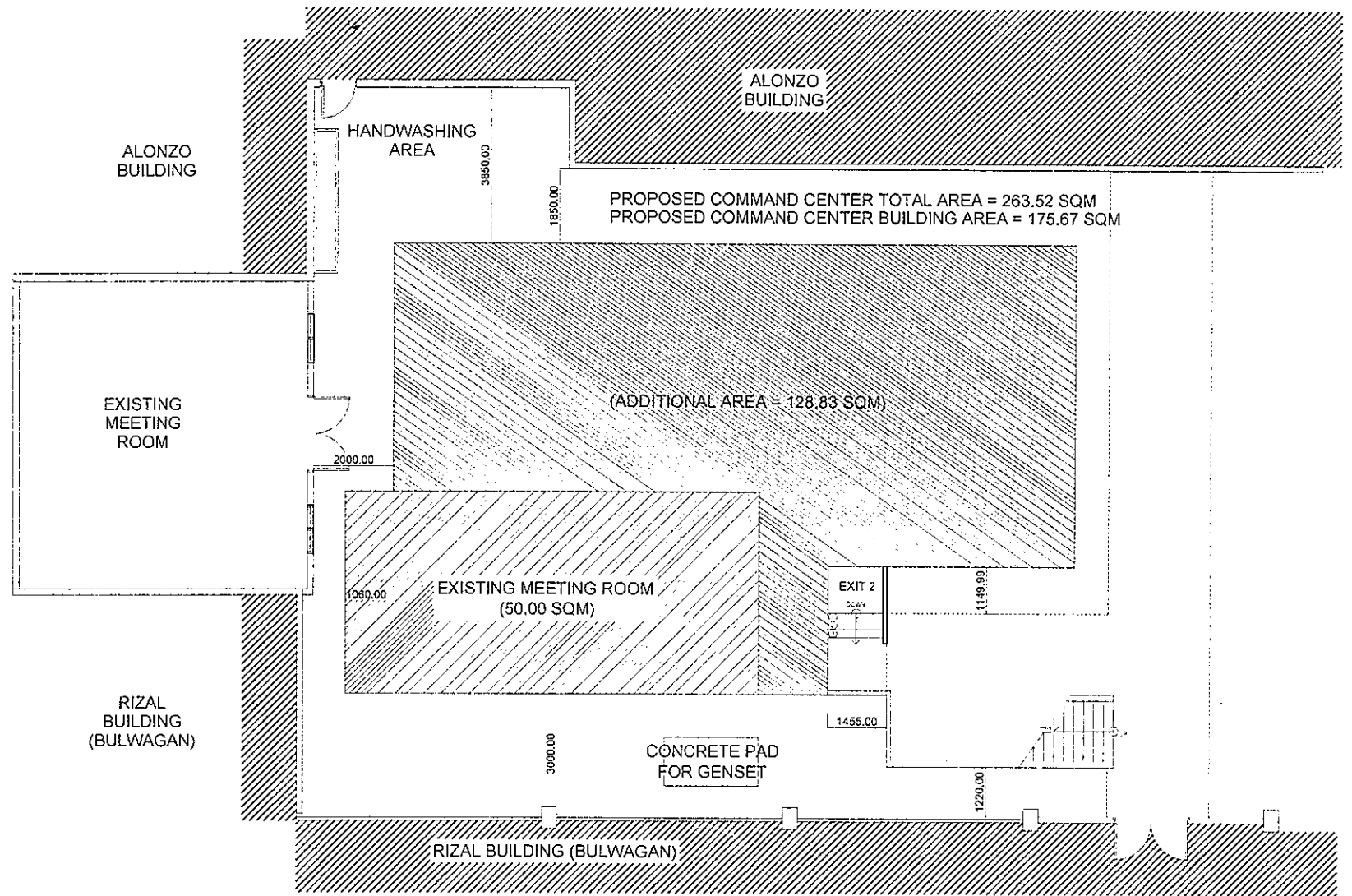


2  
A-2 SCALE NTS  
DEPED COMMAND CENTER  
EXTERIOR PERSPECTIVE

TABLE OF CONTENTS

ARCHITECTURAL		STRUCTURAL		PLUMBING		ELECTRICAL			
A-1	PERSPECTIVE TABLE OF CONTENTS	A-12	DETAIL PLAN OF TOILET 1 DETAIL SECTION OF TOILET 1	S-1	GENERAL CONSTRUCTION NOTES	P-1	GROUND FLOOR WATERLINE LAYOUT	E-1	PROPOSED DISTRIBUTION LINE (UNDERGROUND)
A-2	LOCATION MAP		DETAIL PLAN OF TOILET 2 DETAIL SECTION OF TOILET 2	S-2	GENERAL CONSTRUCTION NOTES	P-2	MEZZANINE FLOOR WATERLINE LAYOUT	E-2	GROUND FLOOR LIGHTING POWER LAYOUT
A-3	GROUND FLOOR PLAN SCHEDULE OF FLOOR FINISHES	A-13	DETAIL PLAN OF TOILET 3 DETAIL SECTION OF TOILET 3	S-3	GROUND FLOOR COLUMN LAYOUT REFERENCE DETAIL ELEVATION OF COLUMN	P-3	GROUND FLOOR SANITARY LAYOUT	E-3	MEZZANINE FLOOR LIGHTING POWER LAYOUT
A-4	SCHEDULE OF WALL FINISHES MEZZANINE FLOOR PLAN SCHEDULE OF FLOOR FINISHES		DETAILED PLAN OF FIRE EXIT 2 DETAILED SECTION OF FIRE EXIT 2	S-4	MEZZANINE FLOOR COLUMN LAYOUT	P-4	MEZZANINE FLOOR SANITARY LAYOUT	E-4	GROUND FLOOR POWER LAYOUT
A-5	SCHEDULE OF WALL FINISHES GROUND FLOOR REFLECTED CEILING PLAN SCHEDULE OF CEILING FINISHES	A-14	SCHEDULE OF DOORS AND WINDOWS	S-5	COLUMN SCHEDULE @ 0 TO 6.20M SLAB SCHEDULE (C20:FY420) (LEVEL 3.0M)	P-5	GROUND FLOOR DRAINAGE LAYOUT PARTIAL PLAN OF TRENCH DRAIN DETAILED SECTION OF TRENCH DRAIN	E-5	MEZZANINE FLOOR POWER LAYOUT
A-6	MEZZANINE FLOOR REFLECTED CEILING PLAN SCHEDULE OF CEILING FINISHES			S-6	SLAB GENERAL ARRANGEMENT @ 3.0M CONCRETE PAD DETAILS FOR GENSET	P-6	ROOD PLAN DRAINAGE LAYOUT	E-6	ELECTRICAL RISER DIAGRAM SCHEDULE OF LOADS
A-7	ROOF PLAN			S-7	SLAB GENERAL ARRANGEMENT @ 6.20M	P-7	PLUMBING NOTES AND LEGENDS	E-7	ELECTRICAL GENERAL NOTES AND LEGENDS ELECTRICAL SINGLE DIAGRAM
A-8	SECTION THRU "A" SECTION THRU "B" DETAILED DRAWING OF ACOUSTIC CEILING DETAILED DRAWING OF RAISED FLOORING			S-8	SLAB TOP REINFORCEMENT @ 3.0M	P-8	GROUND FLOOR WATERLINE ISOMETRIC DIAGRAM MEZZANINE FLOOR WATERLINE ISOMETRIC DIAGRAM		
A-9	LEFT SIDE ELEVATION FRONT SIDE ELEVATION DETAILED DRAWING OF ROOF EAVES			S-9	SLAB BOTTOM REINFORCEMENT @ 3.0M	P-9	GROUND FLOOR SANITARY ISOMETRIC DIAGRAM		
A-10	REAR ELEVATION RIGHT ELEVATION DETAILED DRAWING OF LADDER			S-10	SLAB TOP REINFORCEMENT @ 6.20M	P-10	GROUND FLOOR DRAINAGE ISOMETRIC DIAGRAM		
A-11	DETAILED PLAN OF STAIRS DETAIL SECTION OF STAIRS DETAIL SECTION OF GLASS RAILINGS			S-11	SLAB BOTTOM REINFORCEMENT @ 6.20M		ROOF PLAN DRAINAGE ISOMETRIC DIAGRAM		
				S-12	TIE BEAM PLAN TYPICAL GIRDER/BEAM DETAIL				
				S-13	GROUND FLOOR BEAM PLAN				
				S-14	MEZZANINE FLOOR BEAM PLAN				
				S-15	BEAM SCHEDULE @ 1.50M BEAM SCHEDULE @ 3.0M				
				S-16	BEAM SCHEDULE @ 3.0M BEAM SCHEDULE @ 6.20M				
				S-17	FOUNDATION PLAN TYPICAL FOOTING DETAIL & ELEVATION SCHEDULE OF FOOTING				

<p>REPUBLIC OF THE PHILIPPINES DEPARTMENT OF EDUCATION EDUCATION FACILITIES DIVISION MERALCO AVENUE, PASIG CITY</p>	PREPARED BY : AR. MAZIA ALBARRIA T. RACELIS SENIOR TECHNICAL ASSISTANT / ARCHITECT ENGR. ERIC JORGE A. CARAG TECHNICAL ASSISTANT / ENGINEER AS-DepED	CHECKED BY : JET RAYMOND S. ALABASO PEO / ARCHITECT EPD-DepED	RECOMMENDING APPROVAL : ANNABELLE S. OMBAN IEF, EPD DepED	RECOMMENDING APPROVAL : ROBERT M. AGUSTIN DIRECTOR IV ADMINISTRATIVE SERVICE	APPROVED BY : NOLASCO A. MEMPIN UNDERSECRETARY OF ADMINISTRATION	PROJECT TITLE : CONSTRUCTION OF DEPED CENTRAL OFFICE MATAJAG CENTER LOCATION : MERALCO AVENUE, PASIG CITY	PROJECT CODE :	OWNER : DEPARTMENT OF EDUCATION DepED	SHEET NO. : A-1 1/4
	SHEET CONTENTS : PERSPECTIVE TABLE OF CONTENTS								



1 DEPED COMMAND CENTER  
LOCATION MAP  
A-2 SCALE NTS

REPUBLIC OF THE PHILIPPINES  DEPARTMENT OF EDUCATION EDUCATION FACILITIES DIVISION MERALCO AVENUE, PASIG CITY	PREPARED BY:  ENGR. ERIC JORGE A. CARAG TECHNICAL ASSISTANT I, ENGINEER AS - DepEd	CHECKED BY:  ANABELLE R. RODRIGUEZ PRO ARCHITECT OFD - DepEd	RECOMMENDING APPROVAL:  ANABELLE R. RODRIGUEZ OFD - DepEd	RECOMMENDING APPROVAL:  ROBERT M. AQUINO DIRECTOR IV ADMINISTRATIVE SERVICE OFD - DepEd	APPROVED BY:  EDUARDO A. MEVRA UNDERSECRETARY OF ADMINISTRATIVE SERVICE	PROJECT TITLE: <b>Extension of an Existing Building at the DepEd Central Office for the CO Matatag Center</b> MERALCO AVENUE, PASIG CITY	PROJECT CODE:  	SHEET NO. DEPARTMENT OF EDUCATION DepEd SHEET CONTENTS: LOCATION MAP	SHEET NO. A-2 14
							PROJECT TITLE: <b>Extension of an Existing Building at the DepEd Central Office for the CO Matatag Center</b> MERALCO AVENUE, PASIG CITY	PROJECT CODE:  	SHEET NO. DEPARTMENT OF EDUCATION DepEd SHEET CONTENTS: LOCATION MAP

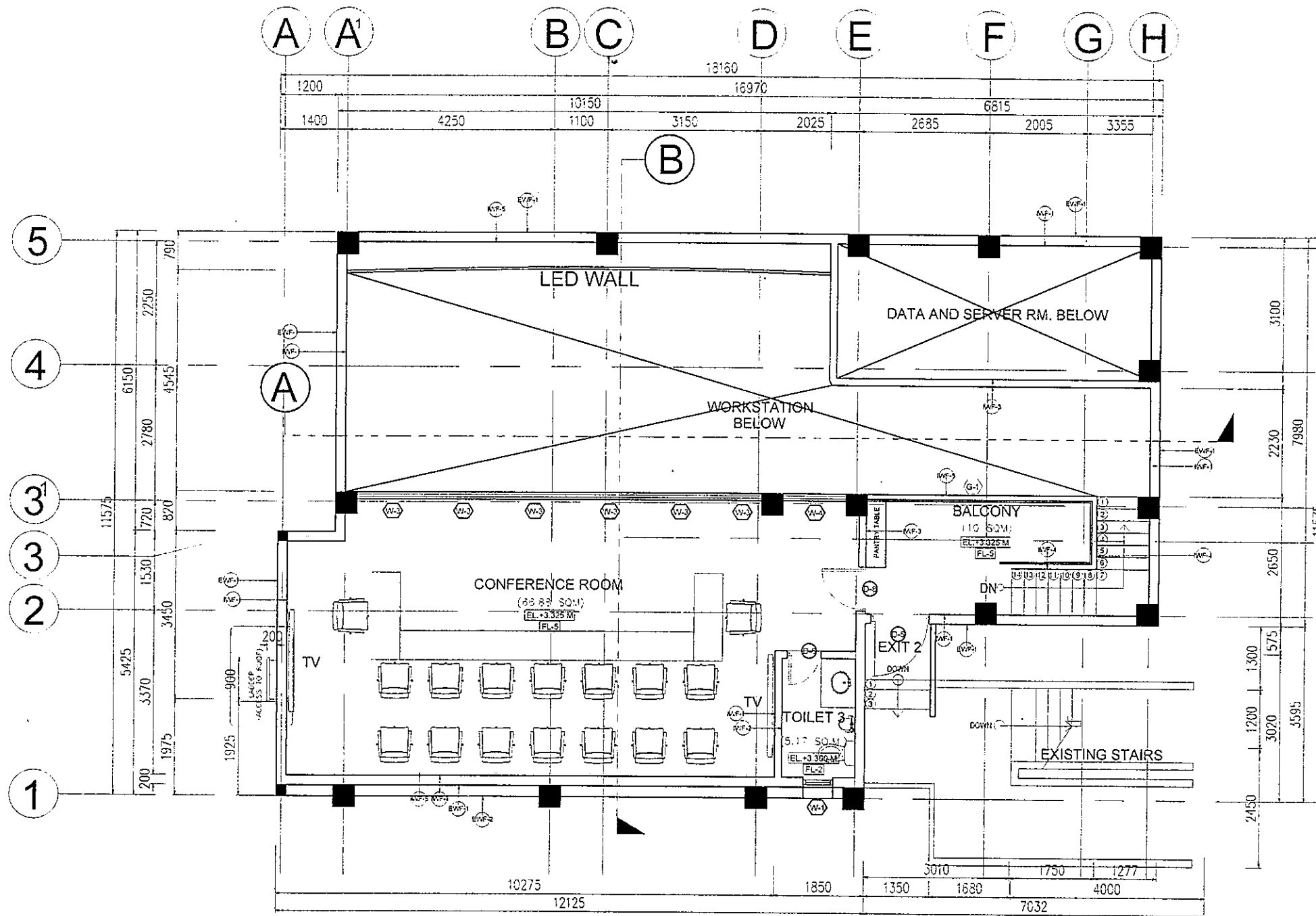


**SCHEDULE OF FLOOR FINISHES :**

MARK	FLOOR DESCRIPTION
FL - 1	125 mm THK. CONCRETE SLAB TOPPED WITH 600 mm x 600 mm GLAZED TILE FLOOR FINISH WITH RUBBER TILE FINISH 500 mm x 500 mm x 15 mm THK.
FL - 2	100 mm THK. CONCRETE SLAB TOPPED WITH 200 mm x 200 mm VITRIFIED UNGLAZED TILE FLOOR FINISH
FL - 3	100 mm THK. CONCRETE SLAB PLAIN CEMENT FLOOR WITH 400mm HT. RAISED FLOORING WITH 600 mm x 600 mm x 3 mm THK. VINYL TILES
FL - 4	100 mm THK. CONCRETE SLAB WITH 100mm HT. RAISED FLOORING WITH 500 mm x 500 mm x 15 mm THK. RUBBER TILE FLOORING
FL - 4a	100 mm THK. CONCRETE SLAB WITH 200mm HT. RAISED FLOORING WITH 500 mm x 500 mm x 15 mm THK. RUBBER TILE FLOORING
FL - 5	150 mm THK. CONCRETE SLAB WITH 500 mm x 500 mm x 15 mm THK. RUBBER TILE FLOORING

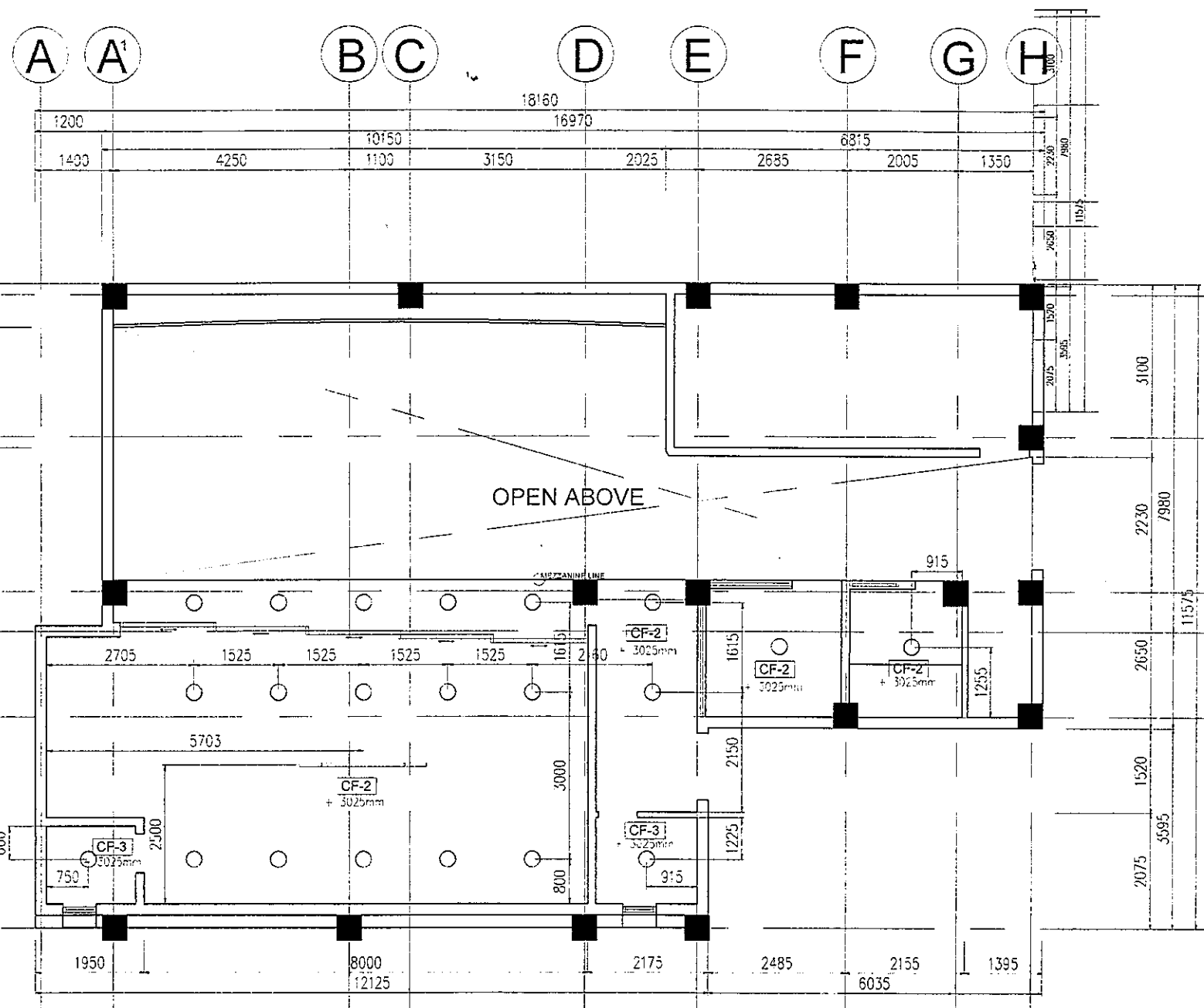
**SCHEDULE OF WALL FINISHES :**

MARK	WALL DESCRIPTION
EWf - 1	150 mm THK. CHB EXTERIOR WALL WITH PLAIN CEMENT PLASTER PAINTED FINISH (NOTE: SUBMIT COLOR SCHEME FOR APPROVAL)
EWf - 2	150 mm THK. CHB EXTERIOR WALL WITH PLAIN CEMENT PLASTER PAINTED FINISH (NOTE: SUBMIT COLOR SCHEME FOR APPROVAL)
IWF - 1	INTERIOR WALL WITH PLAIN CEMENT PLASTER FINISH WITH 50 mm THK. FABRIC WRAPPED ACOUSTIC PANEL (NOTE: SIZE AND COLOR FOR APPROVAL)
IWF - 2	100 mm THK. CHB INTERIOR WALL WITH PLAIN CEMENT PLASTER PAINTED FINISH WITH 200 mm x 200 mm VITRIFIED GLAZED TILE WALL FINISH (SIZE AND COLOR FOR APPROVAL) (NOTE: TYPICAL ON ALL TOILET WALLS)
IWF - 3	100 mm THK. INSULATED DRYWALL SYSTEM WITH FELSEN ROCKWOOL ON METAL STUDS WITH 50 mm THK. FABRIC WRAPPED ACOUSTIC PANEL (NOTE: SUBMIT COLOR SCHEME FOR APPROVAL AND SPECIFICATION)
IWF - 4	INSULATED DRYWALL SYSTEM WITH FELSEN ROCKWOOL ON PLAIN CEMENT PLASTER PAINTED FINISH (NOTE: SUBMIT COLOR SCHEME FOR APPROVAL AND SPECIFICATION)
IWF - 5	INTERIOR WALL WITH PLAIN CEMENT PLASTER FINISH (NOTE: SUBMIT COLOR SCHEME FOR APPROVAL)
IWF - 6	12 mm THK. GYPSUM BOARD WITH PLAIN CEMENT PLASTER PAINTED FINISH (NOTE: SUBMIT COLOR SCHEME FOR APPROVAL)
IWF - 7	100 mm THK. DRYWALL SYSTEM ON PLAIN CEMENT PLASTER PAINTED FINISH AND FROSTED GLASS (NOTE: SUBMIT COLOR SCHEME FOR APPROVAL)
IWF - 8	50 mm THK. WPC FLUTED PANELS ON WOOD FINISH ACCENT WALL (SUBMIT COLOR SCHEME FOR APPROVAL AND SPECIFICATION)



**1**  
A-4  
DEPED COMMAND CENTER  
PROPOSED MEZZANINE FLOOR PLAN  
SCALE 1:100 M

<p>REPUBLIC OF THE PHILIPPINES <b>DepEd</b> DEPARTMENT OF EDUCATION EDUCATION FACILITIES DIVISION MERALCO AVENUE, PASIG CITY</p>	PREPARED BY: AP. MARIA MARGARITA RACE IS SENIOR ARCHITECT ENGR. ERIC JORGE A. CARAG TECHNICAL ASSISTANT / ENGINEER DepEd	CHECKED: JERARD MOND G. SANCOS PEO / ARCHITECT EPD - DepEd	RECOMMENDING APPROVAL: ANNABELLE R. PANGAN CHIEF, EPD DepEd	RECOMMENDING APPROVAL: ROBERT M. AGUSTIN DIRECTOR II ADMINISTRATIVE SERVICE	APPROVED BY: NOLASCO A. MENPIN UNDERSECRETARY OF ADMINISTRATION	PROJECT TITLE: Extension of an Existing Building at the DepEd Central Office for the CO Matatag Center LOCATION: MERALCO AVENUE, PASIG CITY	PROJECT CODE: CHIEF: DEPARTMENT OF EDUCATION DepEd SHEET CONTENTS: MEZZANINE FLOOR PLAN	SHEET NO. A-4 14
	DEPARTMENT OF EDUCATION DepEd MEZZANINE FLOOR PLAN							



### CEILING LEGENDS

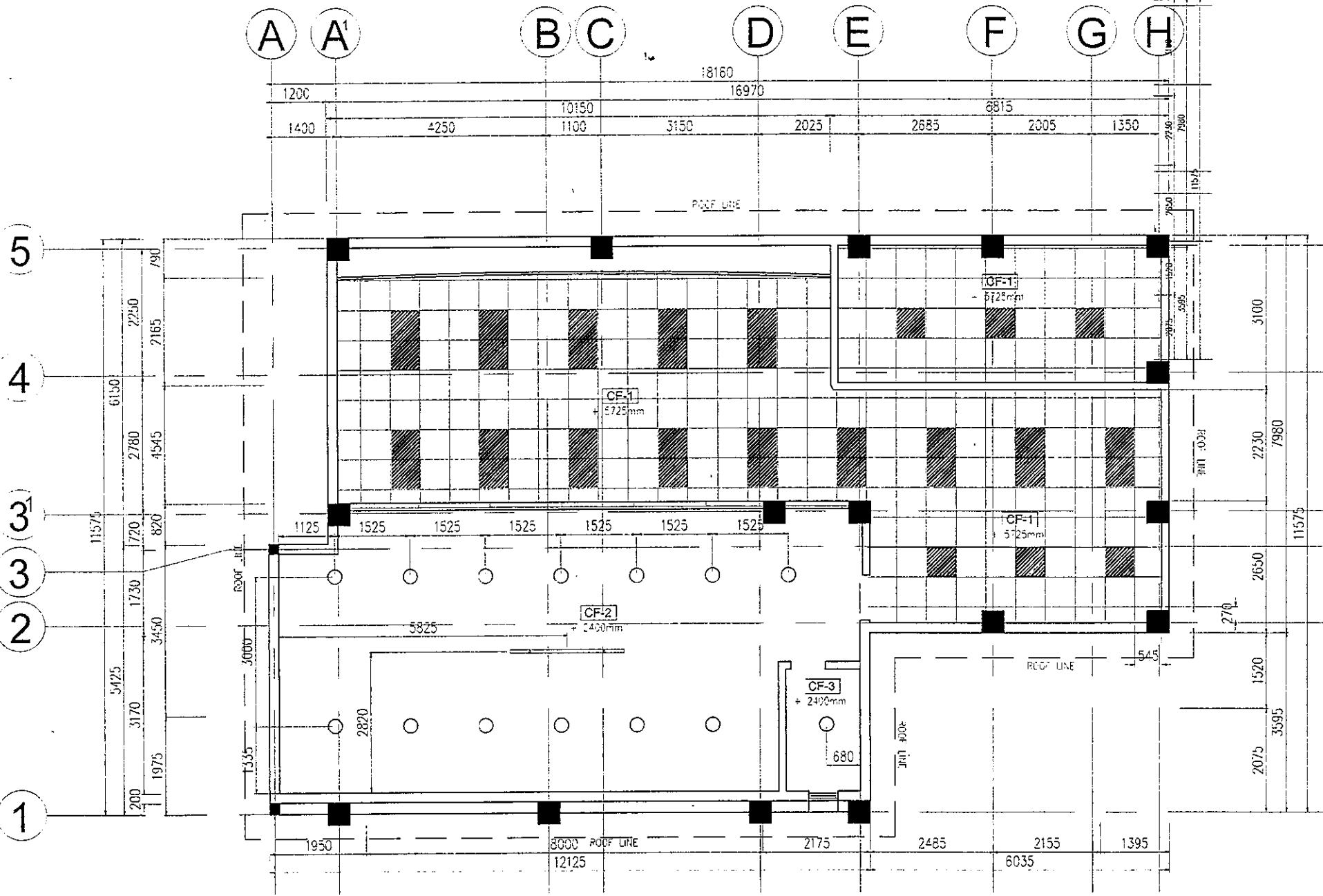
- 600 x 600 mm LIGHT DIFFUSER PANEL
- E-27 RECESSED LED PIN LIGHT (CIRCULAR TYPE)

### CEILING FINISHES SCHEDULE

MARK	CEILING DESCRIPTION
CF-1	600x600mm R-33 FINE FISSURED ACOUSTIC CEILING BOARD ON TEE RUNNERS
CF-2	12mm THK GYPSUM BOARD ON METAL FURRING SYSTEM
CF-3	12mm THK MOISTURE PROOF GYPSUM BOARD
NOTE : PROVIDE 8 mm THK. ROOF INSULATION WITH TWO (2) LAYERS POLYETHYLENE BUBBLED FILM BONDED/LAMINATED BETWEEN BY ALUMINUM FOIL RADIANT BARRIERS (REFER TO MANUFACTURER'S SPECIFICATION) PROVIDE COMPLETE ACCESSORIES	

1  
A-5  
DEPED COMMAND CENTER  
PROPOSED REFLECTED CEILING PLAN FOR GROUND FLOOR  
SCALE 1:100.M

 REPUBLIC OF THE PHILIPPINES <b>DepED</b> DEPARTMENT OF EDUCATION EDUCATION FACILITIES DIVISION MERALCO AVENUE, PASIG CITY	PREPARED BY: APR. MARIA MARCELO RACE JS SENIOR LEAD ARCHITECT / ARCHITECT ENGR. ERIC JORGE A. CARAG TECHNICAL ASSISTANT / ENGINEER DepED	CHECKED BY: JAY RAYMOND G. LABARDO PDD / ARCHITECT DepED	RECOMMENDING APPROVAL: ANNA ELLE P. BAYAN CHIEF, EFD DepED	RECOMMENDING APPROVAL: ROBERT M. AGUSTIN DIRECTOR IV ADMINISTRATIVE SERVICE	APPROVED BY: INGLASCO A. MEYRIN UNDERSECRETARY OF ADMINISTRATION	PROJECT TITLE: <b>Extension of an Existing Building          at the DepEd Central Office for          the CO Matatag Center</b>	PROJECT CODE: DEPARTMENT OF EDUCATION DepED	SHEET NO.: <b>A-5</b> <b>14</b>
	LOCATION: MERALCO AVENUE, PASIG CITY						SHEET CONTENTS: GROUND FLOOR REFLECTED CEILING PLAN	



**CEILING LEGENDS**

- 600 x 600 mm LIGHT DIFFUSER PANEL
- E-27 RECESSED LED PIN LIGHT (CIRCULAR TYPE)

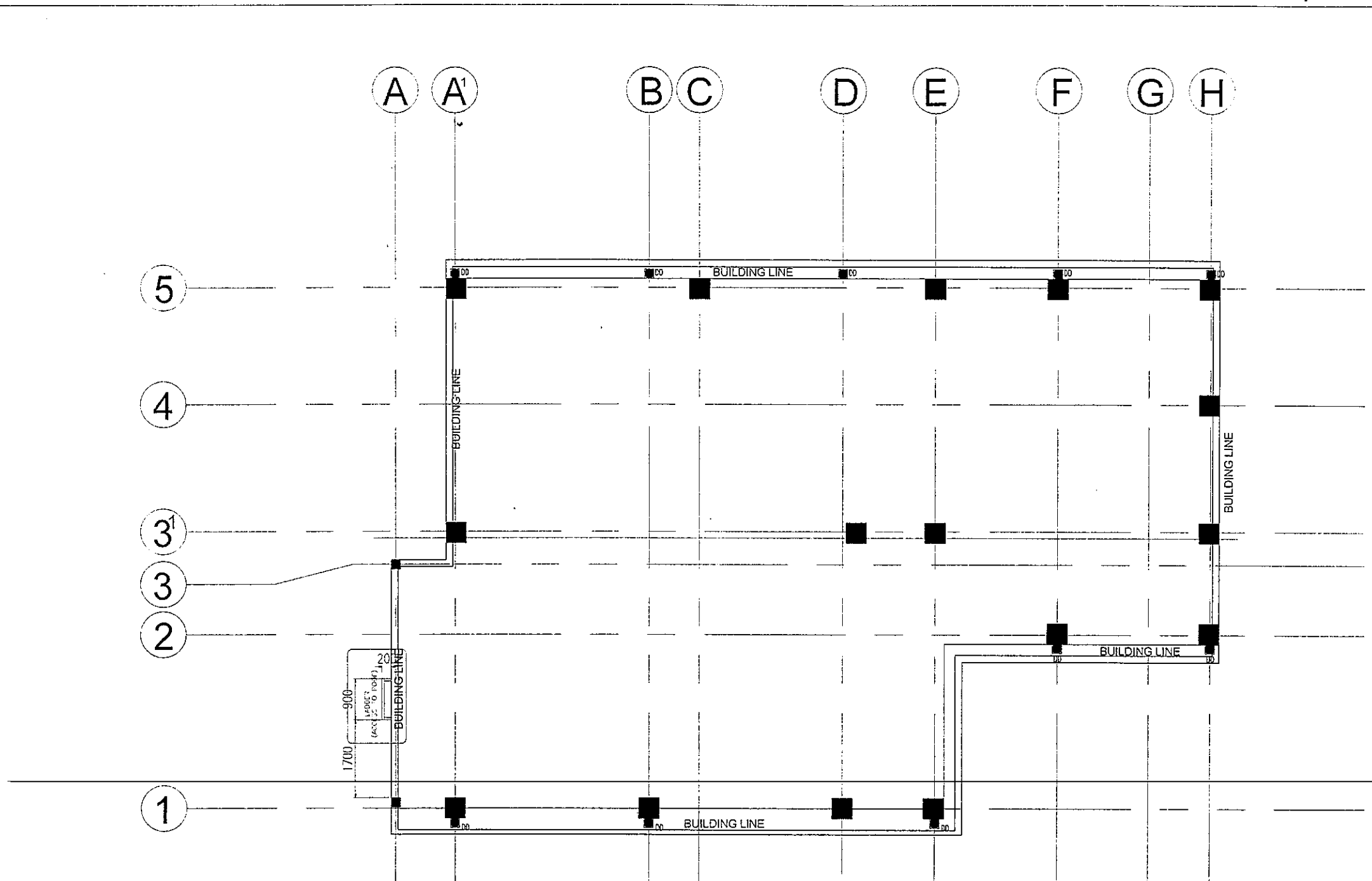
**CEILING FINISHES SCHEDULE**

MARK	CEILING DESCRIPTION
CF-1	600x600mm R-33 FINE FISSURED ACOUSTIC CEILING BOARD ON TEE RUNNERS
CF-2	12mm THK GYPSUM BOARD ON METAL FURRING SYSTEM
CF-3	12mm THK MOISTURE PROOF GYPSUM BOARD

NOTE : PROVIDE 8 mm THK. ROOF INSULATION WITH TWO (2) LAYERS POLYETHYLENE BUBBLED FILM BONDED/LAMINATED BETWEEN BY ALUMINUM FOIL RADIANT BARRIERS (REFER TO MANUFACTURER'S SPECIFICATION)  
PROVIDE COMPLETE ACCESSORIES

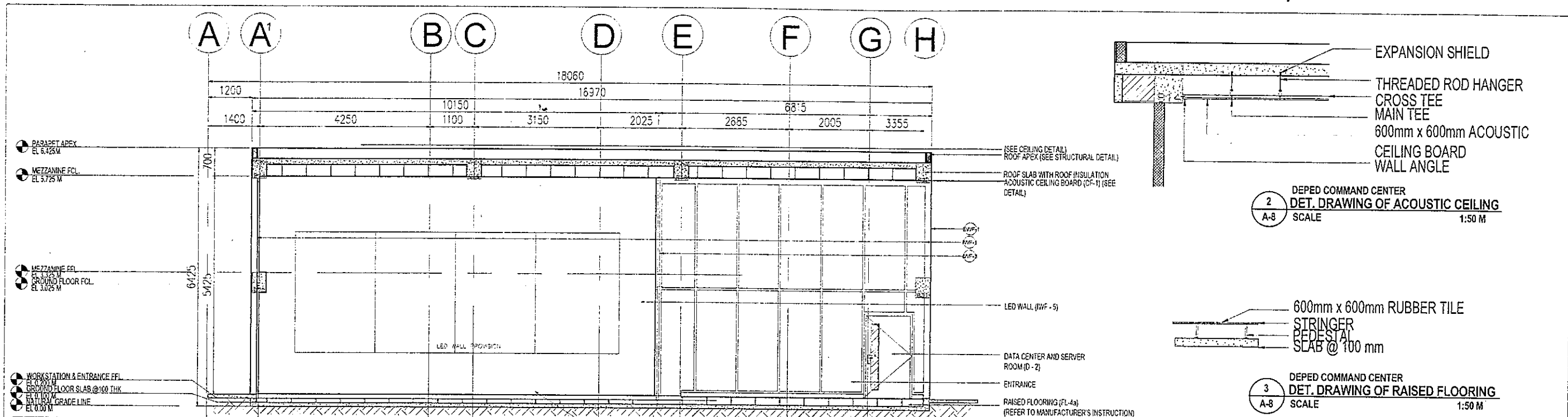
1 DEPED COMMAND CENTER  
PROPOSED REFLECTED CEILING PLAN MEZZANINE FLOOR  
A-6 SCALE 1:100 M

REPUBLIC OF THE PHILIPPINES <b>DepED</b> DEPARTMENT OF EDUCATION EDUCATION FACILITIES DIVISION MERALCO AVENUE, PASIG CITY	PREPARED BY AR. MARIA MANUELA RACE LIS SENIOR EDUCATION FACILITIES ARCHITECT ENGR. ERIC JORGE A. CARAG TECHNICAL ASSISTANT / ENGINEER ES-DepEd	CHECKED BY JET RAYMOND G. CABASO PDD II / ARCHITECT ETD-DepEd	RECOMMENDING APPROVAL ANNABELLE R. PANGAN CHIEF, ETD DepEd	RECOMMENDING APPROVAL ROBERT M. AGUSTIN DIRECTOR II ADMINISTRATIVE SERVICE	APPROVED BY HILASCO A. MEVPIN UNDERSECRETARY OF ADMINISTRATION	PROJECT TITLE <b>Extension of an Existing Building at the DepEd Central Office for the CO Matatag Center</b>	PROJECT CODE OWNER DEPARTMENT OF EDUCATION DepED	SHEET NO. <b>A-6</b> <b>14</b>
	LOCATION: MERALCO AVENUE, PASIG CITY						SHEET CONTENTS MEZZANINE REFLECTED CEILING PLAN	

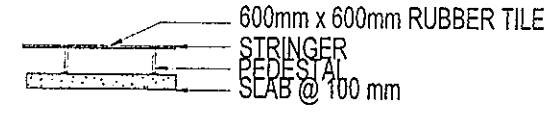


1 DEPED COMMAND CENTER  
 PROPOSED ROOF FLOOR  
 A-7 SCALE 1:100 M

 REPUBLIC OF THE PHILIPPINES <b>DepED</b> DEPARTMENT OF EDUCATION EDUCATION FACILITIES DIVISION MERALCO AVENUE, PASIG CITY	PREPARED BY: AP. MARIA MARGARETA RACE IS SENIOR TECHNICAL ASSISTANT IV/ARCHITECT ENGR. EPIC JORGE A. CAPAG TECHNICAL ASSISTANT I/ENGINEER 23-04984	CHECKED BY: JET RICHARD D. ALBANO FDD II/ARCHITECT EFD-DepEd	RECOMMENDING APPROVAL: MARIBELLE V. PANGAN CHIEF, EFD DepEd	RECOMMENDING APPROVAL: ROBERT M. AGUSTIN DIRECTOR II ADMINISTRATIVE SERVICE	APPROVED BY: NOLASCO A. MEMPHIN UNDERSECRETARY OF ADMINISTRATION	PROJECT TITLE: <b>Extension of an Existing Building          at the DepEd Central Office for          the CO Matatag Center</b>	PROJECT CODE: DEPARTMENT OF EDUCATION DepED	DRAWER: DEPARTMENT OF EDUCATION DepED	SHEET NO.: A-7 14
	LOCATION: MERALCO AVENUE, PASIG CITY						SHEET CONTENTS: ROOF PLAN		



2  
A-8  
DEPED COMMAND CENTER  
DET. DRAWING OF ACOUSTIC CEILING  
SCALE 1:50 M



3  
A-8  
DEPED COMMAND CENTER  
DET. DRAWING OF RAISED FLOORING  
SCALE 1:50 M

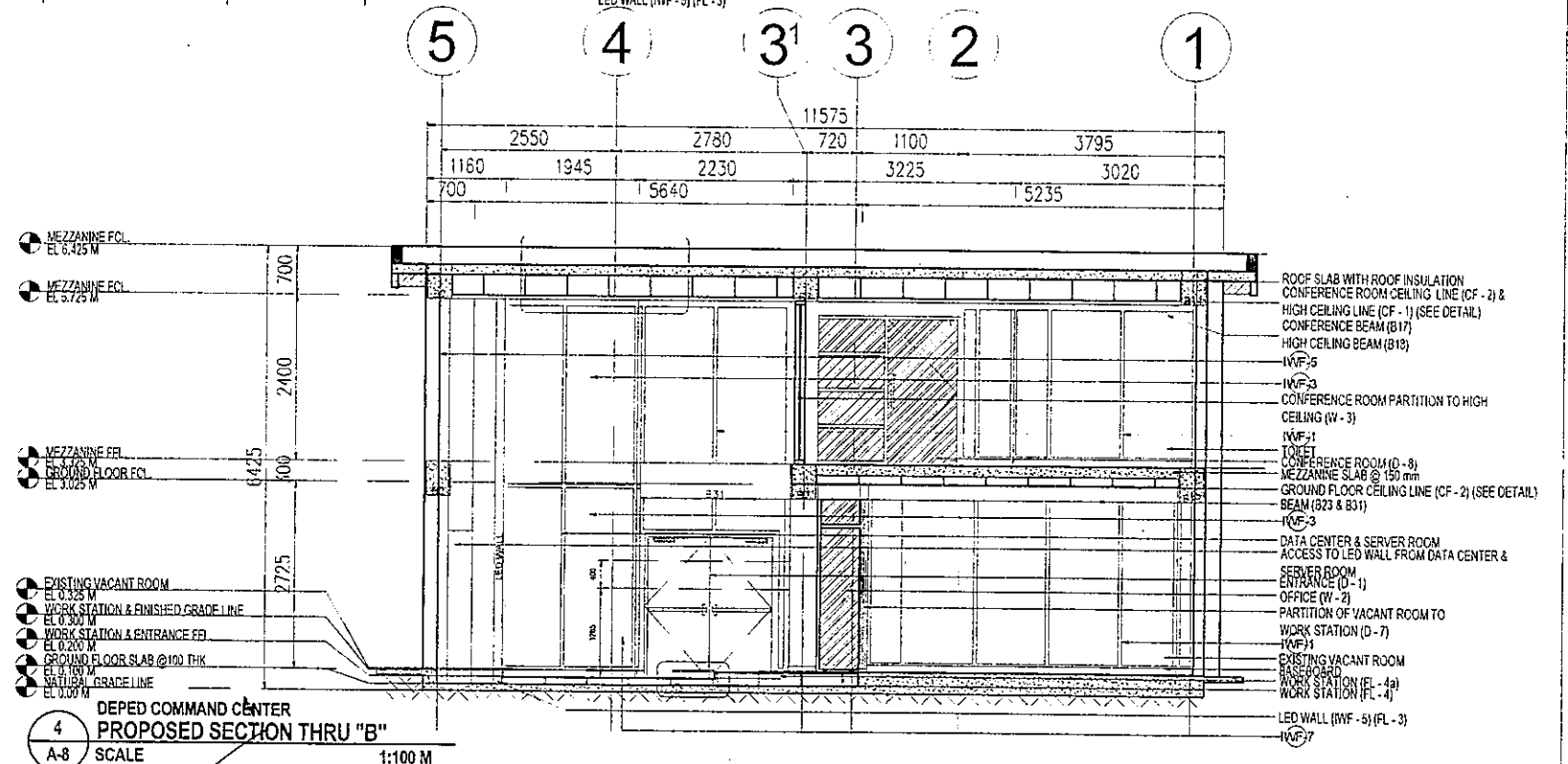
MARK	FLOOR DESCRIPTION
FL - 1	125 mm THK. CONCRETE SLAB TOPPED WITH 600 mm x 800 mm GLAZED TILE FLOOR FINISH WITH RUBBER TILE FINISH 500 mm x 500 mm x 15 mm THK.
FL - 2	100 mm THK. CONCRETE SLAB TOPPED WITH 200 mm x 200 mm VITRIFIED UNGLAZED TILE FLOOR FINISH
FL - 3	100 mm THK. CONCRETE SLAB PLAIN CEMENT FLOOR WITH 400mm HT. RAISED FLOORING WITH 600 mm x 600 mm x 3 mm THK. VINYL TILES
FL - 4	100 mm THK. CONCRETE SLAB WITH 100mm HT. RAISED FLOORING WITH 500 mm x 500 mm x 15 mm THK. RUBBER TILE FLOORING
FL - 4a	100 mm THK. CONCRETE SLAB WITH 200mm HT. RAISED FLOORING WITH 500 mm x 500 mm x 15 mm THK. RUBBER TILE FLOORING
FL - 5	150 mm THK. CONCRETE SLAB WITH 500 mm x 500 mm x 15 mm THK. RUBBER TILE FLOORING

1  
A-8  
DEPED COMMAND CENTER  
PROPOSED SECTION THRU "A"  
SCALE 1:100 M

**SCHEDULE OF WALL FINISHES :**

MARK	WALL DESCRIPTION
EW - 1	150 mm THK. CHB EXTERIOR WALL WITH PLAIN CEMENT PLASTER PAINTED FINISH <small>(NOTE: SUBMIT COLOR SCHEME FOR APPROVAL)</small>
EW - 2	150 mm THK. CHB EXTERIOR WALL WITH PLAIN CEMENT PLASTER PAINTED FINISH <small>(NOTE: SUBMIT COLOR SCHEME FOR APPROVAL)</small>
IWF - 1	INTERIOR WALL WITH PLAIN CEMENT PLASTER FINISH WITH 50 mm THK. FABRIC WRAPPED ACOUSTIC PANEL <small>(NOTE: SUBMIT COLOR SCHEME FOR APPROVAL)</small>
IWF - 2	100 mm THK. CHB INTERIOR WALL WITH PLAIN CEMENT PLASTER PAINTED FINISH WITH 200 mm x 200 mm VITRIFIED UNGLAZED TILE WALL FINISH (SIZE AND COLOR FOR APPROVAL) <small>(NOTE: SUBMIT COLOR SCHEME FOR APPROVAL)</small>

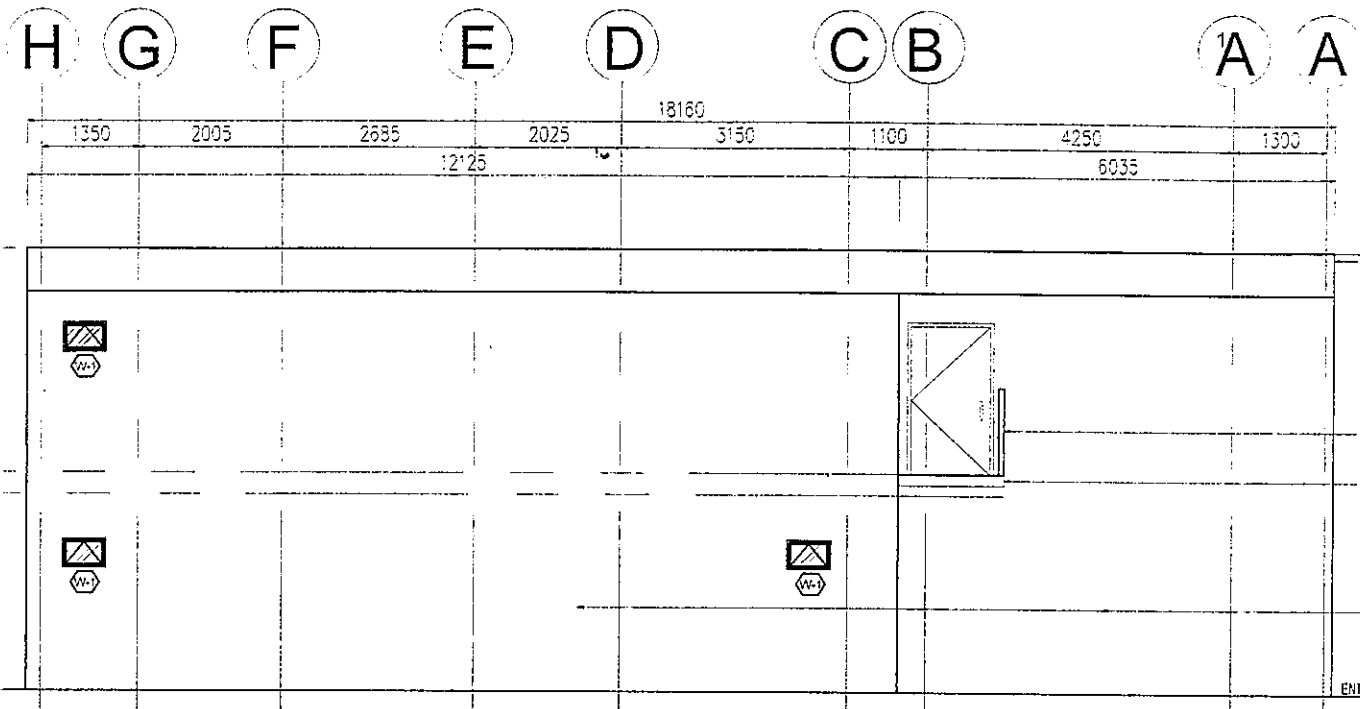
IWF - 3	100 mm THK. INSULATED DRYWALL SYSTEM WITH FELSEN ROCKWOOL ON METAL STUDS WITH 50 mm THK. FABRIC WRAPPED ACOUSTIC PANEL <small>(NOTE: SUBMIT COLOR SCHEME FOR APPROVAL AND SPECIFICATION)</small>
IWF - 4	INSULATED DRYWALL SYSTEM WITH FELSEN ROCKWOOL ON PLAIN CEMENT PLASTER PAINTED FINISH <small>(NOTE: SUBMIT COLOR SCHEME FOR APPROVAL AND SPECIFICATION)</small>
IWF - 5	INTERIOR WALL WITH PLAIN CEMENT PLASTER FINISH <small>(NOTE: SUBMIT COLOR SCHEME FOR APPROVAL)</small>
IWF - 6	12 mm THK. GYPSUM BOARD WITH PLAIN CEMENT PLASTER PAINTED FINISH <small>(NOTE: SUBMIT COLOR SCHEME FOR APPROVAL)</small>
IWF - 7	100 mm THK. DRYWALL SYSTEM ON PLAIN CEMENT PLASTER PAINTED FINISH AND FROSTED GLASS <small>(NOTE: SUBMIT COLOR SCHEME FOR APPROVAL)</small>
IWF - 8	50 mm THK. WPC FLUTED PANELS ON WOOD FINISH ACCENT WALL <small>(NOTE: SUBMIT COLOR SCHEME FOR APPROVAL AND SPECIFICATION)</small>



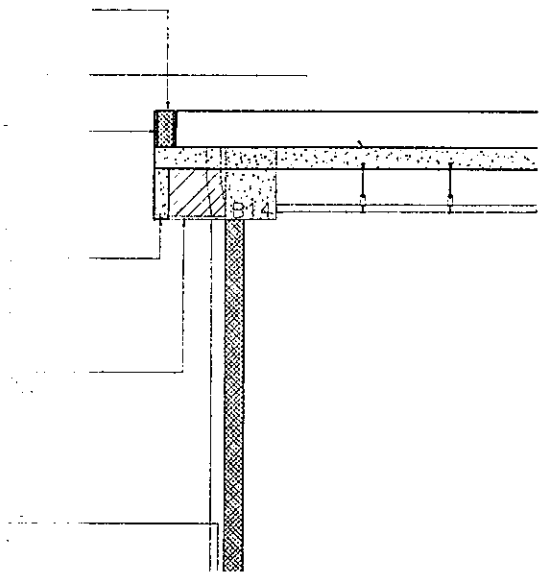
4  
A-8  
DEPED COMMAND CENTER  
PROPOSED SECTION THRU "B"  
SCALE 1:100 M

<p>REPUBLIC OF THE PHILIPPINES DEPARTMENT OF EDUCATION EDUCATION FACILITIES DIVISION MERALCO AVENUE, PASIG CITY</p>	<p>PREPARED BY AR. MARIA MARGARETA RACE JS SENIOR ARCHITECT</p> <p>ENGR. ERIC JURGE A. CARAG TECHNICAL ASSISTANT I/ENGINEER AS-DepEd</p>	<p>CHECKED BY JET. ROSEMARY S. ALABRADO PRO ARCHITECT EPD-DepEd</p>	<p>RECOMMENDING APPROVAL ANNIBILLE R. PANGAN CHIEF, EPD DepEd</p>	<p>RECOMMENDING APPROVAL ROBERT M. AGUSTIN DIRECTOR II ADMINISTRATIVE SERVICE</p>	<p>APPROVED BY INOCENCIO A. MERVIN UNDERSECRETARY OF ADMINISTRATION</p>	<p>PROJECT TITLE Extension of an Existing Building at the DepEd Central Office for the CO Matatag Center</p> <p>EDUCATION MERALCO AVENUE, PASIG CITY</p>	<p>PROJECT CODE</p> <p>OWNER DEPARTMENT OF EDUCATION DepEd</p> <p>SHEET CONTENTS SECTION THRU "A" DET. DRAWING OF ACOUSTIC CEILING DET. DRAWING OF RAISED FLOORING SECTION THRU "B"</p>	<p>SHEET NO. A-8 14</p>
---	--	---	---	---	---	--	---	---------------------------------

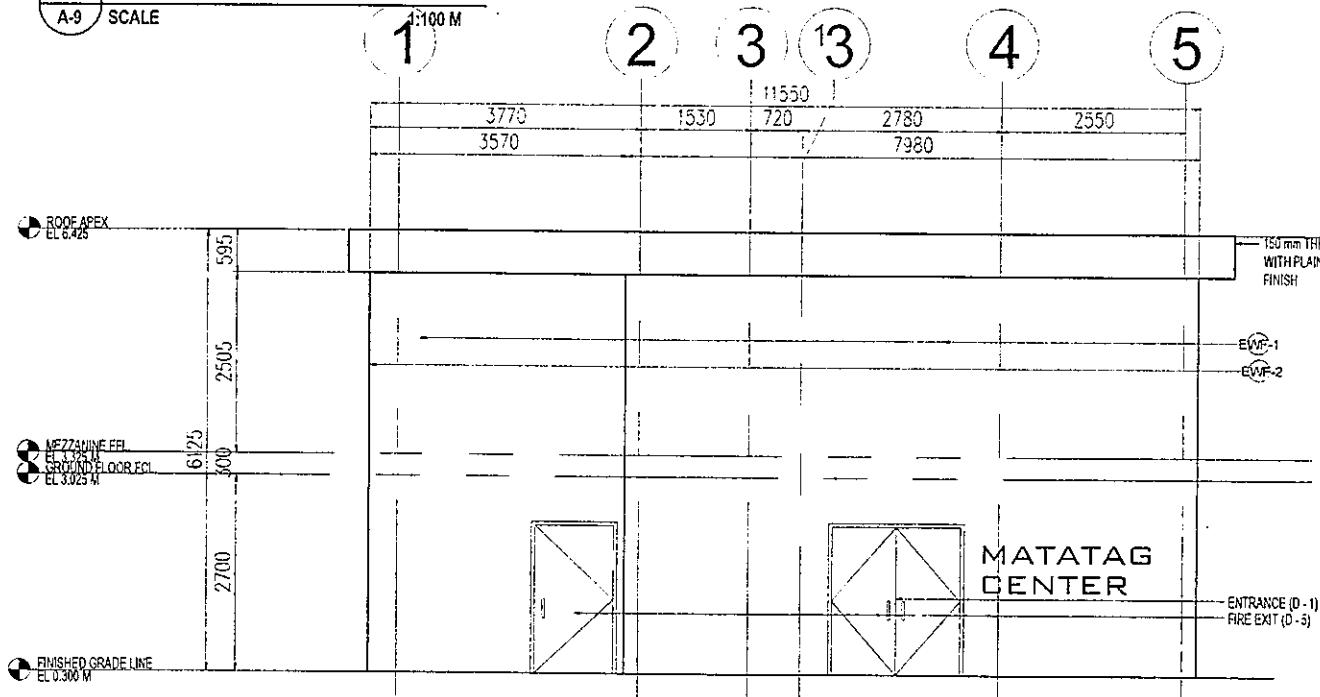




1  
A-9  
SCALE  
DEPED COMMAND CENTER  
PROPOSED LEFT SIDE ELEVATION  
1:100 M



2  
A-9  
SCALE  
DEPED COMMAND CENTER  
DET. SECTION OF ROOF EAVES  
1:50 M



3  
A-9  
SCALE  
DEPED COMMAND CENTER  
PROPOSED FRONT SIDE ELEVATION  
1:100 M

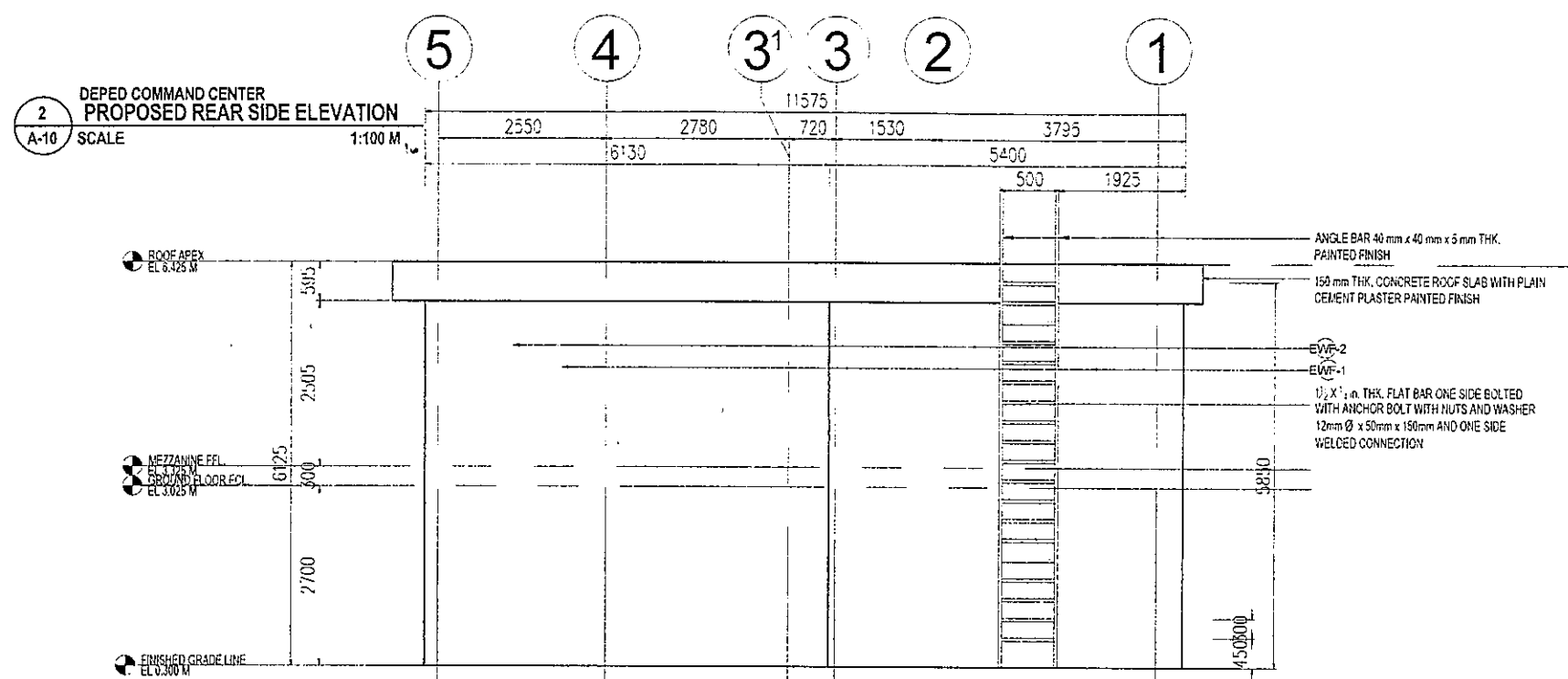
SCHEDULE OF FLOOR FINISHES

MARK	FLOOR DESCRIPTION
FL-1	125 mm THK. CONCRETE SLAB TOPPED WITH 800 mm x 800 mm GLAZED TILE FLOOR FINISH WITH RUBBER TILE FINISH 500 mm x 500 mm x 15 mm THK.
FL-2	100 mm THK. CONCRETE SLAB TOPPED WITH 200 mm x 200 mm VITRIFIED UNGLAZED TILE FLOOR FINISH
FL-3	100 mm THK. CONCRETE SLAB PLAIN CEMENT FLOOR WITH 400mm HT. RAISED FLOORING WITH 800 mm x 800 mm x 3 mm THK. VINYL TILES
FL-4	100 mm THK. CONCRETE SLAB WITH 100mm HT. RAISED FLOORING WITH 500 mm x 500 mm x 15 mm THK. RUBBER TILE FLOORING
FL-4a	100 mm THK. CONCRETE SLAB WITH 200mm HT. RAISED FLOORING WITH 500 mm x 500 mm x 15 mm THK. RUBBER TILE FLOORING
FL-5	150 mm THK. CONCRETE SLAB WITH 500 mm x 500 mm x 15 mm THK. RUBBER TILE FLOORING

SCHEDULE OF WALL FINISHES :

MARK	WALL DESCRIPTION
EW-1	150 mm THK. CHB EXTERIOR WALL WITH PLAIN CEMENT PLASTER PAINTED FINISH NOTE: SUBMIT COLOR SCHEME FOR APPROVAL
EW-2	150 mm THK. CHB EXTERIOR WALL WITH PLAIN CEMENT PLASTER PAINTED FINISH NOTE: SUBMIT COLOR SCHEME FOR APPROVAL
IWF-1	INTERIOR WALL WITH PLAIN CEMENT PLASTER FINISH WITH 50 mm THK. FABRIC WRAPPED ACOUSTIC PANEL NOTE: SIZE AND COLOR FOR APPROVAL
IWF-2	100 mm THK. CHB INTERIOR WALL WITH PLAIN CEMENT PLASTER PAINTED FINISH WITH 200 mm x 200 mm VITRIFIED GLAZED TILE WALL FINISH (SIZE AND COLOR FOR APPROVAL) NOTE: TYPICAL ON ALL INTERIORS
IWF-3	100 mm THK. INSULATED DRYWALL SYSTEM WITH FELSEN ROCKWOOL ON METAL STUDS WITH 50 mm THK. FABRIC WRAPPED ACOUSTIC PANEL NOTE: SUBMIT COLOR SCHEME FOR APPROVAL AND SPECIFICATION
IWF-4	INSULATED DRYWALL SYSTEM WITH FELSEN ROCKWOOL ON PLAIN CEMENT PLASTER PAINTED FINISH NOTE: SUBMIT COLOR SCHEME FOR APPROVAL AND SPECIFICATION
IWF-5	INTERIOR WALL WITH PLAIN CEMENT PLASTER FINISH NOTE: SUBMIT COLOR SCHEME FOR APPROVAL
IWF-6	12 mm THK. GYPSUM BOARD WITH PLAIN CEMENT PLASTER PAINTED FINISH NOTE: SUBMIT COLOR SCHEME FOR APPROVAL
IWF-7	100 mm THK. DRYWALL SYSTEM ON PLAIN CEMENT PLASTER PAINTED FINISH AND FROSTED GLASS NOTE: SUBMIT COLOR SCHEME FOR APPROVAL
IWF-8	50 mm THK. WPC FLUTED PANELS ON WOOD FINISH ACCENT WALL NOTE: SUBMIT COLOR SCHEME FOR APPROVAL AND SPECIFICATION

	PREPARED BY: AP. MARIA MANUELITA PACE JS SENIOR ENGINEER (STRUCTURAL) / PASIG CITY ENGR. ERIC JUAN A. CARAG TECHNICAL ASSISTANT / PASIG CITY AS-DepEd	CHECKED BY: JER. RAYMOND S. ALIBASAN PEO / ARCHITECT EFD-04952	RECOMMENDING APPROVAL: ANABELLE R. PANGAN CHIEF, EFD DepEd	RECOMMENDING APPROVAL: ROBERT M. AGUSTIN DIRECTOR IV ADMINISTRATIVE SERVICE	APPROVED BY: NICHOLAS A. MENPIN UNDERSECRETARY OF ADMINISTRATION	PROJECT TITLE: <b>Extension of an Existing Building at the DepEd Central Office for the CO Matatag Center</b>	PROJECT CODE: DEPARTMENT OF EDUCATION DepEd	SHEET NO.: <b>A-9</b> <b>14</b>
	LOCATION: MERALCO AVENUE, PASIG CITY						SHEET CONTENTS: LEFT SIDE ELEVATION DET. SECTION OF ROOF EAVES FRONT SIDE ELEVATION	

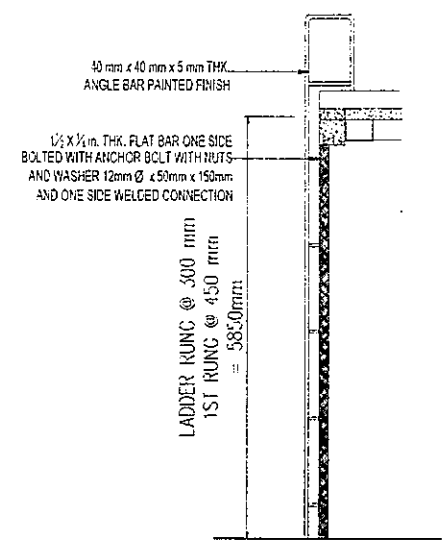


**SCHEDULE OF FLOOR FINISHES**

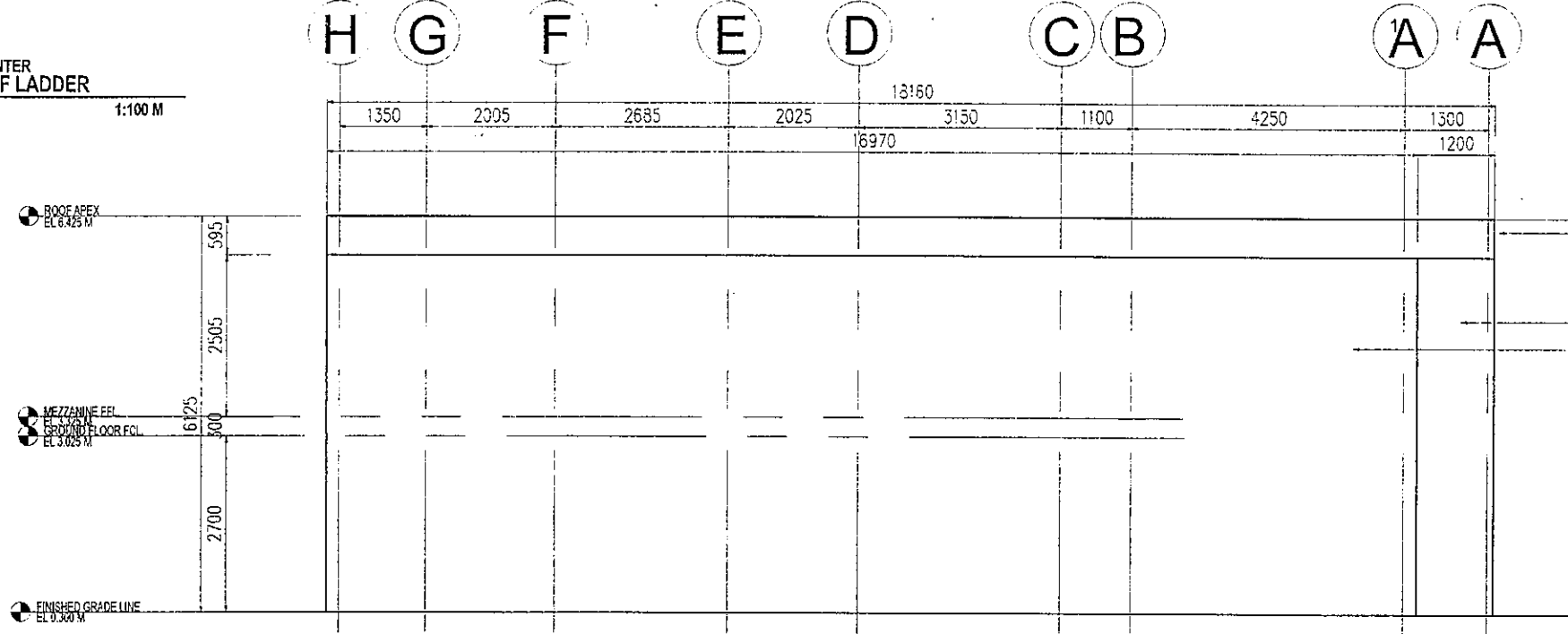
MARK	FLOOR DESCRIPTION
FL - 1	125 mm THK. CONCRETE SLAB TOPPED WITH 600 mm x 600 mm GLAZED TILE FLOOR FINISH WITH RUBBER TILE FINISH 500 mm x 500 mm x 15 mm THK.
FL - 2	100 mm THK. CONCRETE SLAB TOPPED WITH 200 mm x 200 mm VITRIFIED UNGLAZED TILE FLOOR FINISH
FL - 3	100 mm THK. CONCRETE SLAB PLAIN CEMENT FLOOR WITH 40mm HT. RAISED FLOORING WITH 600 mm x 600 mm x 3 mm THK. VINYL TILES
FL - 4	100 mm THK. CONCRETE SLAB WITH 100mm HT. RAISED FLOORING WITH 500 mm x 500 mm x 15 mm THK. RUBBER TILE FLOORING
FL - 4a	100 mm THK. CONCRETE SLAB WITH 200mm HT. RAISED FLOORING WITH 500 mm x 500 mm x 15 mm THK. RUBBER TILE FLOORING
FL - 5	150 mm THK. CONCRETE SLAB WITH 500 mm x 500 mm x 15 mm THK. RUBBER TILE FLOORING

**SCHEDULE OF WALL FINISHES :**

MARK	WALL DESCRIPTION
EW - 1	150 mm THK. CHB EXTERIOR WALL WITH PLAIN CEMENT PLASTER PAINTED FINISH
EW - 2	150 mm THK. CHB EXTERIOR WALL WITH PLAIN CEMENT PLASTER PAINTED FINISH
IWF - 1	INTERIOR WALL WITH PLAIN CEMENT PLASTER FINISH WITH 50 mm THK. FABRIC WRAPPED ACOUSTIC PANEL
IWF - 2	100 mm THK. CHB INTERIOR WALL WITH PLAIN CEMENT PLASTER PAINTED FINISH WITH 200 mm x 200 mm VITRIFIED GLAZED TILE WALL FINISH (SIZE AND COLOR FOR APPROVAL)
IWF - 3	100 mm THK. INSULATED DRYWALL SYSTEM WITH FELSEN ROCKWOOL ON METAL STUDS WITH 50 mm THK. FABRIC WRAPPED ACOUSTIC PANEL
IWF - 4	INSULATED DRYWALL SYSTEM WITH FELSEN ROCKWOOL ON PLAIN CEMENT PLASTER PAINTED FINISH
IWF - 5	INTERIOR WALL WITH PLAIN CEMENT PLASTER FINISH
IWF - 6	12 mm THK. GYPSUM BOARD WITH PLAIN CEMENT PLASTER PAINTED FINISH
IWF - 7	100 mm THK. DRYWALL SYSTEM ON PLAIN CEMENT PLASTER PAINTED FINISH AND FROSTED GLASS
IWF - 8	50 mm THK. WPC FLUTED PANELS ON WOOD FINISH ACCENT WALL (COLOR CO-ORDINATE FOR APPROVAL AND SPECIFICATIONS)



**1**  
A-10 SCALE 1:100 M  
DEPED COMMAND CENTER  
DET. DRAWING OF LADDER

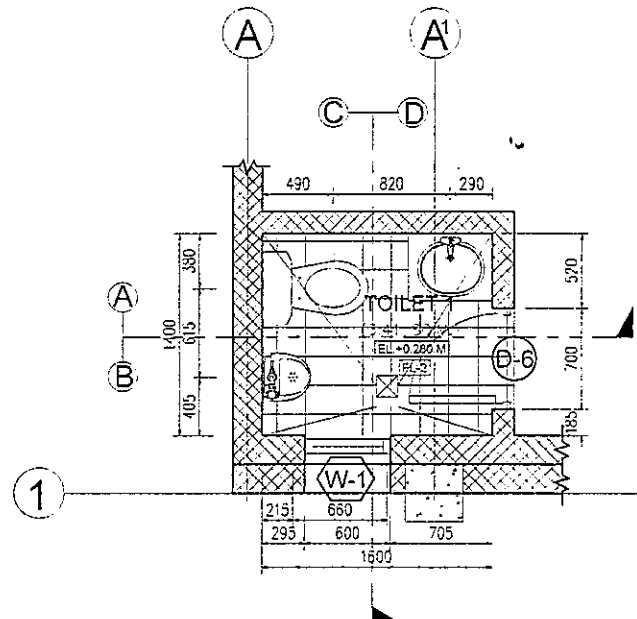


**3**  
A-10 SCALE 1:100 M  
DEPED COMMAND CENTER  
PROPOSED RIGHT SIDE ELEVATION

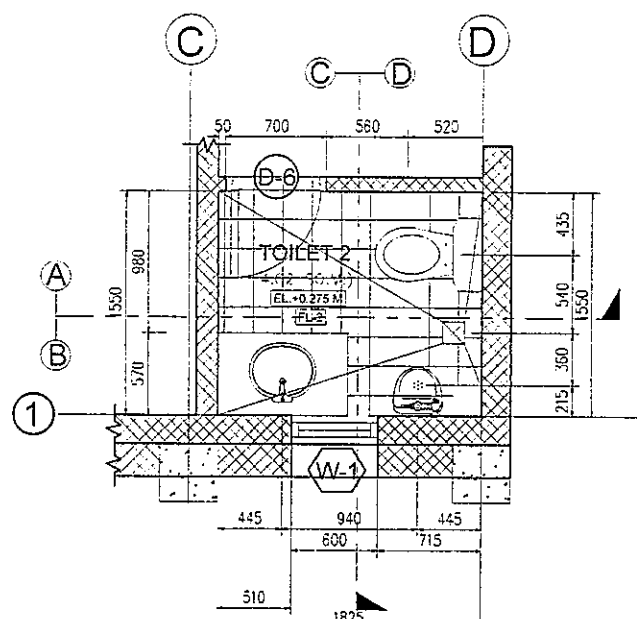
<p>REPUBLIC OF THE PHILIPPINES DEPARTMENT OF EDUCATION EDUCATION FACILITIES DIVISION MERALCO AVENUE, PASIG CITY</p>	<p>PREPARED BY AR. MARA M. BARTERA SENIOR ARCHITECT</p> <p>ENGR. ERIC JORGE A. CARAG TECHNICAL ASSISTANT / ENGINEER AS-DepEd</p>	<p>CHECKED BY JE. RAMONDO S. CALABASO PROJECT ARCHITECT EPD-0495</p>	<p>RECOMMENDING APPROVAL ANGIE BELL CHIEF, EPD DepEd</p>	<p>RECOMMENDING APPROVAL ROBERT M. AGUSTIN DIRECTOR IV ADMINISTRATIVE SERVICE</p>	<p>APPROVED BY NOROSCO A. MEMPIN UNDERSECRETARY OF ADMINISTRATION</p>	<p>PROJECT TITLE Extension of an Existing Building at the DepEd Central Office for the CO Matatag Center</p> <p>LOCATION MERALCO AVENUE, PASIG CITY</p>	<p>PROJECT CODE DAYS?</p>	<p>DEPARTMENT OF EDUCATION DepEd</p>	<p>SHEET NO. A-10 14</p>
	<p>SHEET CONTENTS DET. DRAWING OF LADDER REAR SIDE ELEVATION RIGHT SIDE ELEVATION</p>								



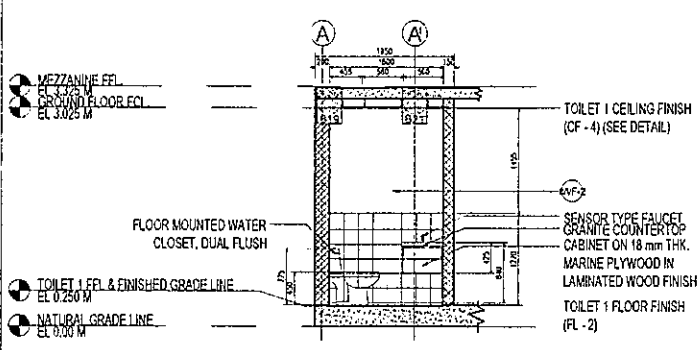
1 DEPED COMMAND CENTER  
DET. PLAN OF TOILET 1  
SCALE 1:50 M



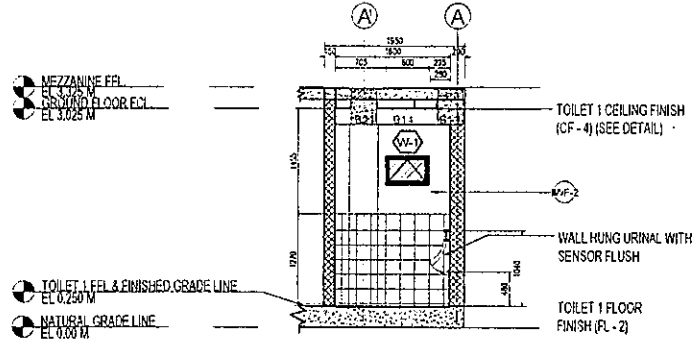
6 DEPED COMMAND CENTER  
DET. PLAN OF TOILET 2  
SCALE 1:50 M



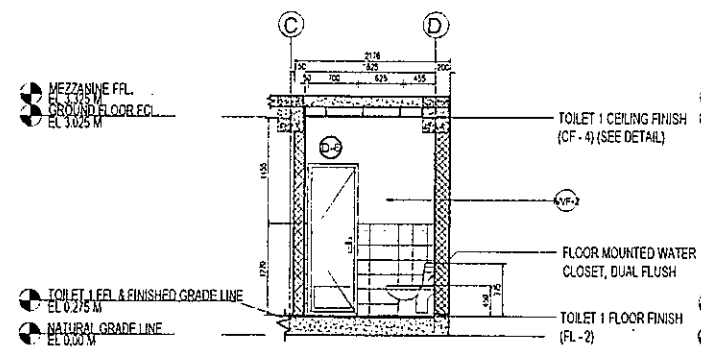
2 DEPED COMMAND CENTER  
DET. SECTION OF TOILET 1 THRU "A"  
SCALE 1:100 M



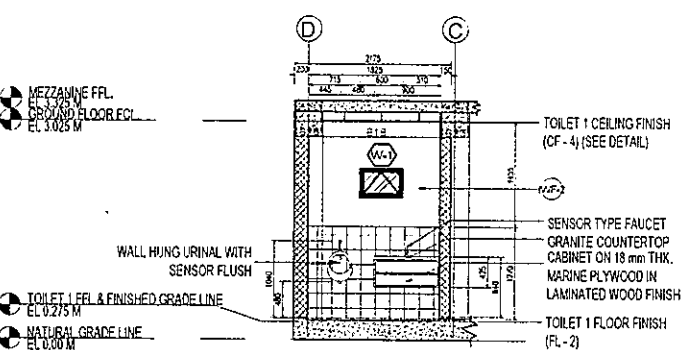
4 DEPED COMMAND CENTER  
DET. SECTION OF TOILET 1 THRU "B"  
SCALE 1:100 M



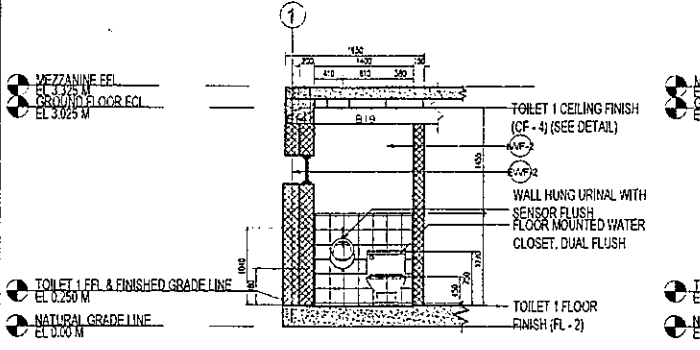
7 DEPED COMMAND CENTER  
DET. SECTION OF TOILET 2 THRU "A"  
SCALE 1:100 M



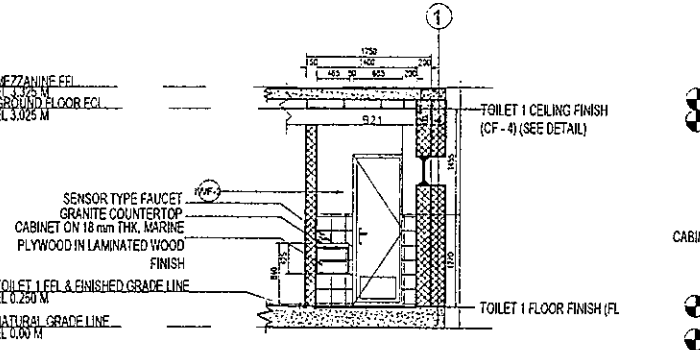
9 DEPED COMMAND CENTER  
DET. SECTION OF TOILET 2 THRU "B"  
SCALE 1:100 M



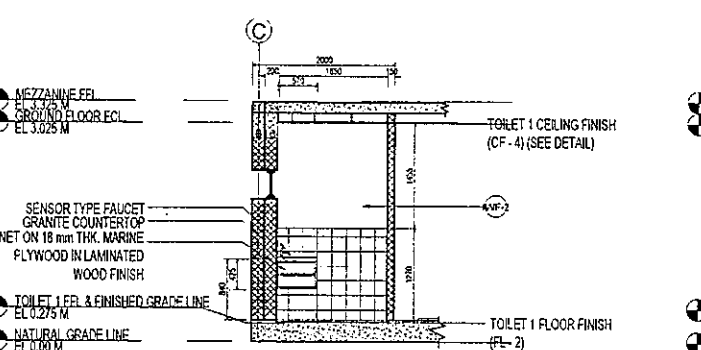
3 DEPED COMMAND CENTER  
DET. SECTION OF TOILET 1 THRU "C"  
SCALE 1:100 M



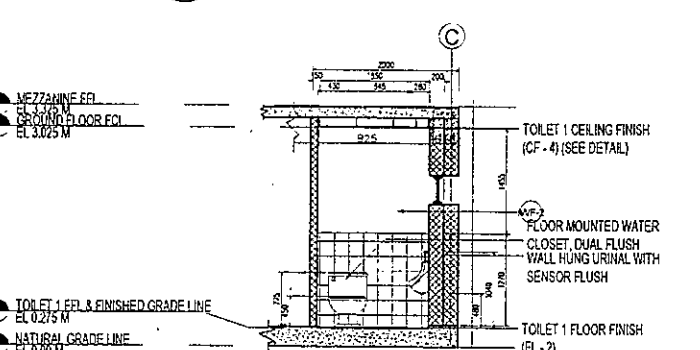
5 DEPED COMMAND CENTER  
DET. SECTION OF TOILET 1 THRU "D"  
SCALE 1:100 M



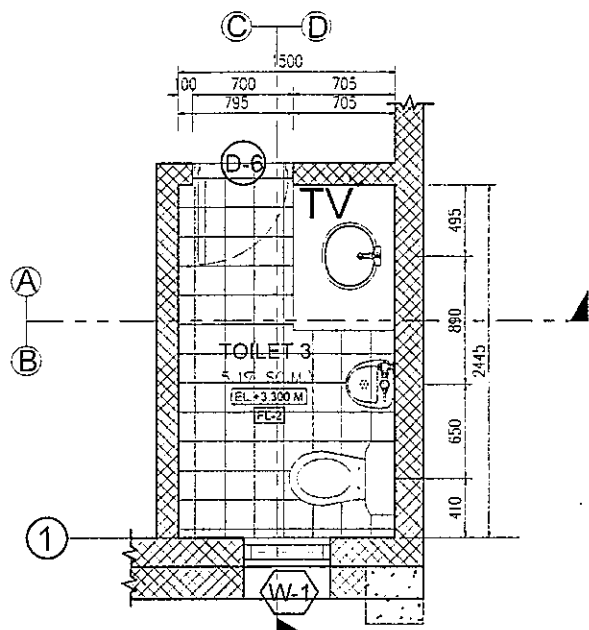
8 DEPED COMMAND CENTER  
DET. SECTION OF TOILET 2 THRU "C"  
SCALE 1:100 M



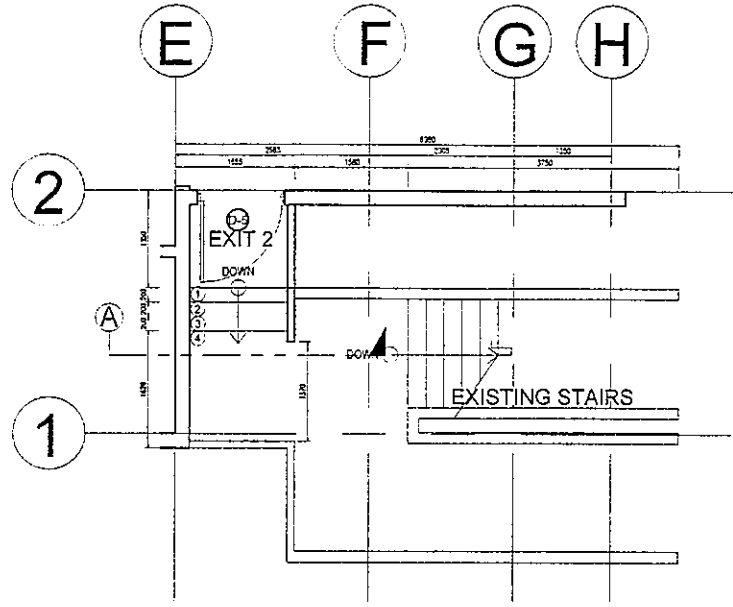
10 DEPED COMMAND CENTER  
DET. SECTION OF TOILET 2 THRU "D"  
SCALE 1:100 M



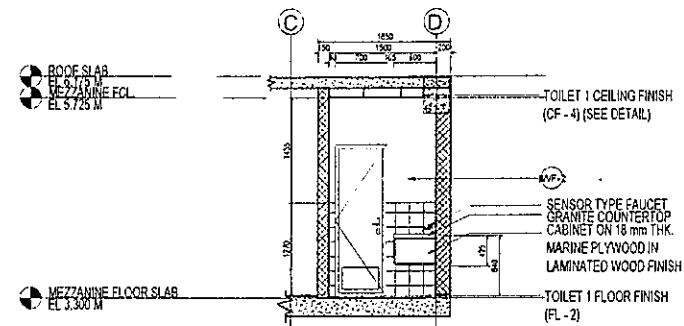
<p>REPUBLIC OF THE PHILIPPINES DEPARTMENT OF EDUCATION EDUCATION FACILITIES DIVISION MERALCO AVENUE, PASIG CITY</p>	<p>PREPARED BY: AR. MARIA MARICEL PACE-15 SENIOR TECHNICAL ASSISTANT I ARCHITECT</p>	<p>CHECKED BY: JEN. MARICEL G. ALABISS PDD 3/ARCHITECT EPD-DepEd</p>	<p>RECOMMENDING APPROVAL: ANGIE BELLE R. BANGSAN CHIEF, EPD DepEd</p>	<p>RECOMMENDING APPROVAL: ROBERT M. AGUSTIN DIRECTOR IV ADMINISTRATIVE SERVICES</p>	<p>APPROVED BY: NOLASCO A. MEMPIN UNDERSECRETARY OF ADMINISTRATION</p>	<p>PROJECT TITLE: Extension of an Existing Building at the DepEd Central Office for the CO Matatag Center LOCATION: MERALCO AVENUE, PASIG CITY</p>	<p>PROJECT CODE: DANER: DEPARTMENT OF EDUCATION DepEd</p>	<p>SHEET NO.: A-12 14</p>
	<p>SHEET CONTENTS: DET. PLAN OF TOILET 1 DET. SECTION OF TOILET 1 THRU "A-D" DET. PLAN OF TOILET 2 DET. SECTION OF TOILET 2 THRU "A-D"</p>							



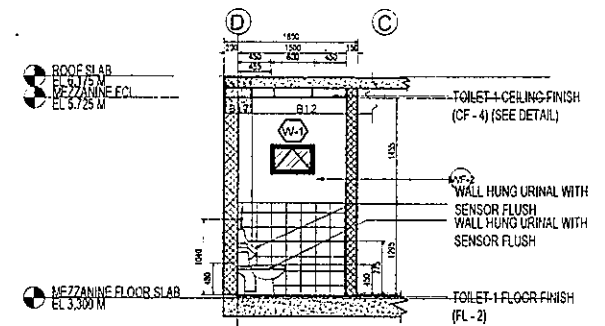
1 DEPED COMMAND CENTER  
DET. PLAN OF TOILET 3  
A-13 SCALE 1:50 M



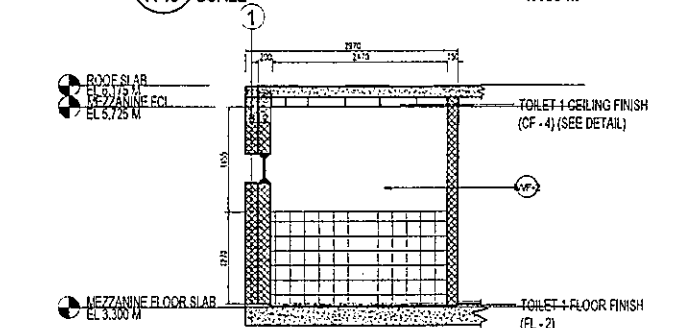
6 DEPED COMMAND CENTER  
DET. PLAN OF FIRE EXIT 2  
A-13 SCALE 1:100 M



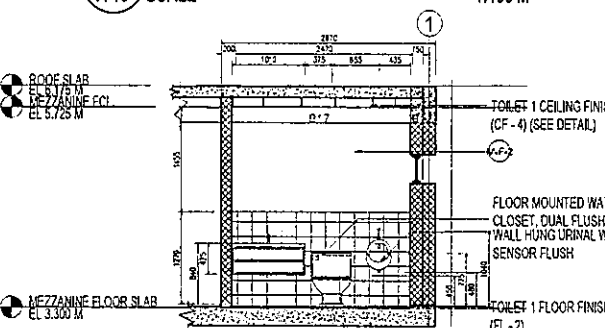
2 DEPED COMMAND CENTER  
DET. SECTION OF TOILET 3 THRU "A"  
A-13 SCALE 1:100 M



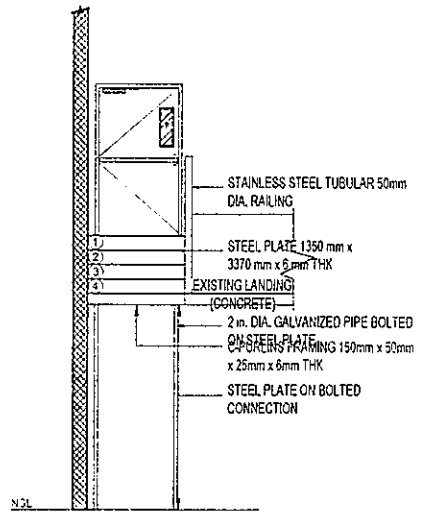
4 DEPED COMMAND CENTER  
DET. SECTION OF TOILET 3 THRU "B"  
A-13 SCALE 1:100 M



3 DEPED COMMAND CENTER  
DET. SECTION OF TOILET 3 THRU "C"  
A-13 SCALE 1:100 M



5 DEPED COMMAND CENTER  
DET. SECTION OF TOILET 3 THRU "D"  
A-13 SCALE 1:100 M



7 DEPED COMMAND CENTER  
DET. SECTION OF FIRE EXIT 2  
A-13 SCALE 1:100 M

<p>REPUBLIC OF THE PHILIPPINES DEPARTMENT OF EDUCATION EDUCATION FACILITIES DIVISION MERALCO AVENUE, PASIG CITY</p>	<p>PREPARED BY: AR MARIO M. CRISTINA, RACE JS SENIOR ARCHITECT</p> <p>ENGR. EPIC JONAS A. CARAG TECHNICAL ASSISTANT I/ENGINEER AS-DepEd</p>	<p>CHECKED BY: JET RAYMOND G. ALARASO PDD ARCHITECT EFD-DepEd</p>	<p>RECOMMENDING APPROVAL: ANNABELLE R. PANGAN CHIEF, EFD DepED</p>	<p>RECOMMENDING APPROVAL: ROBERT M. AGUSTIN DIRECTOR IV ADMINISTRATIVE SERVICE</p>	<p>APPROVED BY: NOLASCO A. MEMPIN UNDERSECRETARY OF ADMINISTRATIVE SERVICE</p>	<p>PROJECT TITLE: Extension of an Existing Building at the DepEd Central Office for the CO Matatag Center</p> <p>LOCATION: MERALCO AVENUE, PASIG CITY</p>	<p>PROJECT CODE: DEPED</p>	<p>DRAWN: DEPARTMENT OF EDUCATION DepED</p>	<p>SHEET NO: A-13 14</p>
	<p>SHEET CONTENTS: DET. PLAN OF TOILET 3 DET. SECTION OF TOILET 3 THRU "A-D" DET. PLAN OF FIRE EXIT 2 DET. SECTION OF FIRE EXIT 2</p>								

	<p>TAG NO. <b>D-1</b></p> <p>GENERAL DIMENSION: 1900 mm W x 2100 mm L, 50 mm THK.</p> <p>DESCRIPTION: 2 HOURS FIRE RATED STEEL SWING TYPE DOOR ON 50 x 150 mm STEEL JAMB. DOUBLE LEAF POWDER COATED FINISH WITH PANIC BAR AND METAL DOOR CLOSER.</p> <p>COMPLETE WITH HARDWARE AND ACCESSORIES</p> <p>4 SETS OF BALL-BEARING HINGES ON HINGE STYLE. PROVIDE PUSH BAR HARDWARE. PROVIDE METAL DOOR CLOSER. PROVIDE CODE COMPLIANT EXIT SIGN.</p> <p>1 SETS</p> <p>LOCATION: ENTRANCE AND MAIN DOOR</p>		<p>TAG NO. <b>D-5</b></p> <p>GENERAL DIMENSION: 1200 mm W x 2100 mm L, 50 mm THK.</p> <p>DESCRIPTION: FIRE RATED STEEL DOOR POWDER COATED FINISH SWING TYPE DOOR ON 50 x 150 mm STEEL JAMB, WITH GLASS VISION PANEL OF 500 mm W x 200 mm L, 6 mm THK. COMPLETE WITH HARDWARE AND ACCESSORIES.</p> <p>4 SETS OF BALL-BEARING HINGES ON HINGE STYLE. PROVIDE PUSH BAR HARDWARE. PROVIDE METAL DOOR CLOSER. PROVIDE CODE COMPLIANT EXIT SIGN. PROVIDE SEALANT.</p> <p>2 SETS</p> <p>LOCATION: FIRE EXIT</p>		<p>TAG NO. <b>W-1</b></p> <p>GENERAL DIMENSION: 2050 mm W x 2500 mm L, 50 mm THK.</p> <p>DESCRIPTION: AWNING WINDOW WITH 6 mm THK. CLEAR GLASS PANEL ON ALUMINUM FRAME POWDER COATED FINISH WITH SEALANT.</p> <p>COMPLETE WITH HARDWARE AND ACCESSORIES</p> <p>3 SETS</p> <p>LOCATION: TOILET</p>
	<p>TAG NO. <b>D-2</b></p> <p>GENERAL DIMENSION: 1200 mm W x 2100 mm L, 50 mm THK.</p> <p>DESCRIPTION: 1.5 HOURS FIRE RATED STEEL DOOR POWDER COATED FINISH SWING TYPE DOOR ON 50 x 150 mm STEEL JAMB, WITH GLASS VISION PANEL 1550 mm W x 200 mm L, 6 mm THK. COMPLETE WITH HARDWARE AND ACCESSORIES.</p> <p>4 SETS OF BALL-BEARING HINGES ON HINGE STYLE. PROVIDE LEVER (MORTISE TYPE) LOCKSET. PROVIDE METAL DOOR CLOSER. PROVIDE METAL DOOR CLOSER. PROVIDE SEALANT.</p> <p>1 SET</p> <p>LOCATION: DATA CENTER AND SERVER ROOM</p>		<p>TAG NO. <b>D-6</b></p> <p>GENERAL DIMENSION: 700 mm W x 2100 mm L, 50 mm THK.</p> <p>DESCRIPTION: HOLLOW CORE FLUSH TYPE SWING DOOR ON 50 x 150 mm WOOD-STEEL JAMB WITH MARINE PLYWOOD, TWO FACED. COMPLETE WITH HARDWARE AND ACCESSORIES. PROVIDE KICK PLATE WITH LEVER TYPE DOOR KNOB.</p> <p>3 SETS OF BALL-BEARING HINGES ON THE HINGE STYLE. PROVIDE LEVER (MORTISE TYPE) LOCKSET. PROVIDE KICK PLATE 300 mm W x 500 mm L.</p> <p>3 SETS</p> <p>LOCATION: TOILETS</p>		<p>TAG NO. <b>W-2</b></p> <p>GENERAL DIMENSION: 2050 mm W x 2500 mm L, 50 mm THK.</p> <p>DESCRIPTION: 6 mm THK. CLEAR TEMPERED GLASS, EIGHT (8) FIXED WINDOW PANEL ON 50 mm x 100 mm ALUMINUM FRAME POWDER COATED FINISH WITH SEALANT.</p> <p>1 SET</p> <p>LOCATION: OFFICE</p>
	<p>TAG NO. <b>D-3</b></p> <p>GENERAL DIMENSION: 1685 mm W x 2600 mm L, 50 mm THK.</p> <p>DESCRIPTION: 10 mm THK. CLEAR TEMPERED GLASS DOOR SWING TYPE ON 50 mm x 100 mm ALUMINUM FD-301 FRAME POWDER COATED FINISH WITH 2.3 ml H-TYPE HANDLE, AND 8 mm THK. (1) ONE FIXED CLEAR TEMPERED GLASS WINDOW 450 mm W x 700 mm L, (1) ONE FIXED CLEAR TEMPERED GLASS WINDOW 450 mm W x 965 mm L AND (4) FOUR FIXED CLEAR TEMPERED GLASS WINDOW 475 mm W x 965 mm L. COMPLETE HARDWARE AND ACCESSORIES. PROVIDE PATCH FITTINGS ON TOP AND BOTTOM. PROVIDE H-TYPE DOOR HANDLE. PROVIDE SEALANT. 1 SET.</p> <p>LOCATION: RADIO ROOM</p>		<p>TAG NO. <b>D-7</b></p> <p>GENERAL DIMENSION: 1720 mm W x 2584 mm L, 50 mm THK.</p> <p>DESCRIPTION: 6 mm THK. CLEAR TEMPERED GLASS SLIDING DOOR ON FD-90 ALUMINUM FRAME POWDER COATED FINISH WITH HEAVY DUTY DOOR TRACK, GUIDE AND ROLLER TOP AND BOTTOM WITH SEALANT.</p> <p>5 SETS</p> <p>LOCATION: EXISTING VACANT ROOM</p>		<p>TAG NO. <b>W-3</b></p> <p>GENERAL DIMENSION: 19130 mm W x 2370 mm L, 50 mm THK.</p> <p>DESCRIPTION: 6 mm THK. CLEAR TEMPERED GLASS, TEN (10) FIXED WINDOW PANEL ON 50 mm x 100 mm ALUMINUM FRAME POWDER COATED FINISH WITH SEALANT.</p> <p>1 SET</p> <p>LOCATION: CONFERENCE ROOM</p>
	<p>TAG NO. <b>D-4</b></p> <p>GENERAL DIMENSION: 2400 mm W x 2900 mm L, 50 mm THK.</p> <p>DESCRIPTION: 10 mm THK. CLEAR TEMPERED GLASS DOOR SWING TYPE ON 50 mm x 100 mm ALUMINUM FD-301 FRAME POWDER COATED FINISH WITH 2.3 ml H-TYPE HANDLE, AND 8 mm THK. (2) TWO FIXED CLEAR TEMPERED GLASS WINDOW 700 mm L x 2100 mm H, (1) ONE FIXED CLEAR TEMPERED GLASS WINDOW 450 mm W x 1350 mm L. COMPLETE HARDWARE AND ACCESSORIES. PROVIDE PATCH FITTINGS ON TOP AND BOTTOM. PROVIDE H-TYPE DOOR HANDLE. PROVIDE SEALANT. 1 SET.</p> <p>LOCATION: OFFICE</p>		<p>TAG NO. <b>D-8</b></p> <p>GENERAL DIMENSION: 2300 mm W x 2370 mm L, 50 mm THK.</p> <p>DESCRIPTION: 10 mm THK. CLEAR TEMPERED GLASS DOOR SWING TYPE ON 50 mm x 100 mm ALUMINUM FD-301 FRAME POWDER COATED FINISH WITH 2.3 ml H-TYPE HANDLE, AND 8 mm THK. (2) TWO FIXED CLEAR TEMPERED GLASS WINDOW 700 mm L x 2100 mm H, (1) ONE FIXED CLEAR TEMPERED GLASS WINDOW 450 mm W x 1350 mm L. COMPLETE HARDWARE AND ACCESSORIES. PROVIDE PATCH FITTINGS ON TOP AND BOTTOM. PROVIDE H-TYPE DOOR HANDLE. PROVIDE SEALANT. 1 SET.</p> <p>LOCATION: CONFERENCE ROOM</p>	<p>TAG NO. <b>W-4</b></p> <p>GENERAL DIMENSION: 1200 mm W x 2370 mm L, 50 mm THK.</p> <p>DESCRIPTION: 6 mm THK. CLEAR TEMPERED GLASS, ONE (1) FIXED WINDOW PANEL ON 50 mm x 100 mm ALUMINUM FRAME POWDER COATED FINISH WITH SEALANT.</p> <p>1 SET</p> <p>LOCATION: CONFERENCE ROOM</p>	<p>TAG NO. <b>G-1</b></p> <p>GENERAL DIMENSION: 7830 mm W x 1000 mm L.</p> <p>DESCRIPTION: 10 mm THK. CLEAR TEMPERED GLASS ON 1/2" ALUMINUM TUBULAR RAILINGS POWDER COATED FINISH. COMPLETE HARDWARE AND ACCESSORIES.</p> <p>1 SET</p> <p>LOCATION: BALCONY</p>

**1**  
DEPED COMMAND CENTER  
SCHEDULE OF DOORS AND WINDOWS  
A-14 SCALE NTS

<p>REPUBLIC OF THE PHILIPPINES <b>DepEd</b> DEPARTMENT OF EDUCATION EDUCATION FACILITIES DIVISION MERALCO AVENUE, PASIG CITY</p>	<p>PREPARED BY: <i>AR MARIA MARGARITA T. RACELIS</i> SENIOR TECHNICAL ASSISTANT II/ARCHITECT</p> <p>ENGR. ERIC JORGE A. CARAG TECHNICAL ASSISTANT II/ENGINEER AS-DepEd</p>	<p>CHECKED BY: <i>JET RAYMOND G. ALABASO</i> PDD II/ARCHITECT EFD-DepEd</p>	<p>RECOMMENDING APPROVAL: <i>ANNAE LLE R. P. P. P.</i> M.E.F., EFD DepEd</p>	<p>RECOMMENDING APPROVAL: <i>ROBERT M. AGUSTIN</i> DIRECTOR IV ADMINISTRATIVE SERVICE</p>	<p>APPROVED BY: <i>NOLASCO A. MEMPIN</i> UNDERSECRETARY FOR ADMINISTRATION</p>	<p>PROJECT TITLE: <b>Extension of an Existing Building at the DepEd Central Office for the CO Matatag Center</b></p> <p>LOCATION: MERALCO AVENUE, PASIG CITY</p>	<p>PROJECT CODE:</p>	<p>OWNER: DEPARTMENT OF EDUCATION DepEd</p> <p>SHEET CONTENTS: SCHEDULE OF DOORS AND WINDOWS</p>	<p>SHEET NO: <b>A-14</b> <b>14</b></p>
--	--	---	--	---	--	--	----------------------	--	--